

- Notes:
1. INLET AND DISCHARGE CONNECTIONS HAVE INTEGRATED FLEX HOSE DESIGN.
 2. SYSTEM WEIGHT: 2775 LBS.
 3. ☒ INDICATES LIFTING POINTS.
 4. ● DENOTES CENTER OF GRAVITY.

SYSTEM CONNECTIONS	
ID	DESCRIPTION
C	CONDENSATE DRAIN LOCATION
I	INLET LOCATION
D	DISCHARGE LOCATION

MINIMUM CLEARANCE FOR MAINTENANCE AND VENTILATION

ALARM WIRING ACCESS
ETHERNET WIRING ACCESS

ELECTRICAL CONNECTION

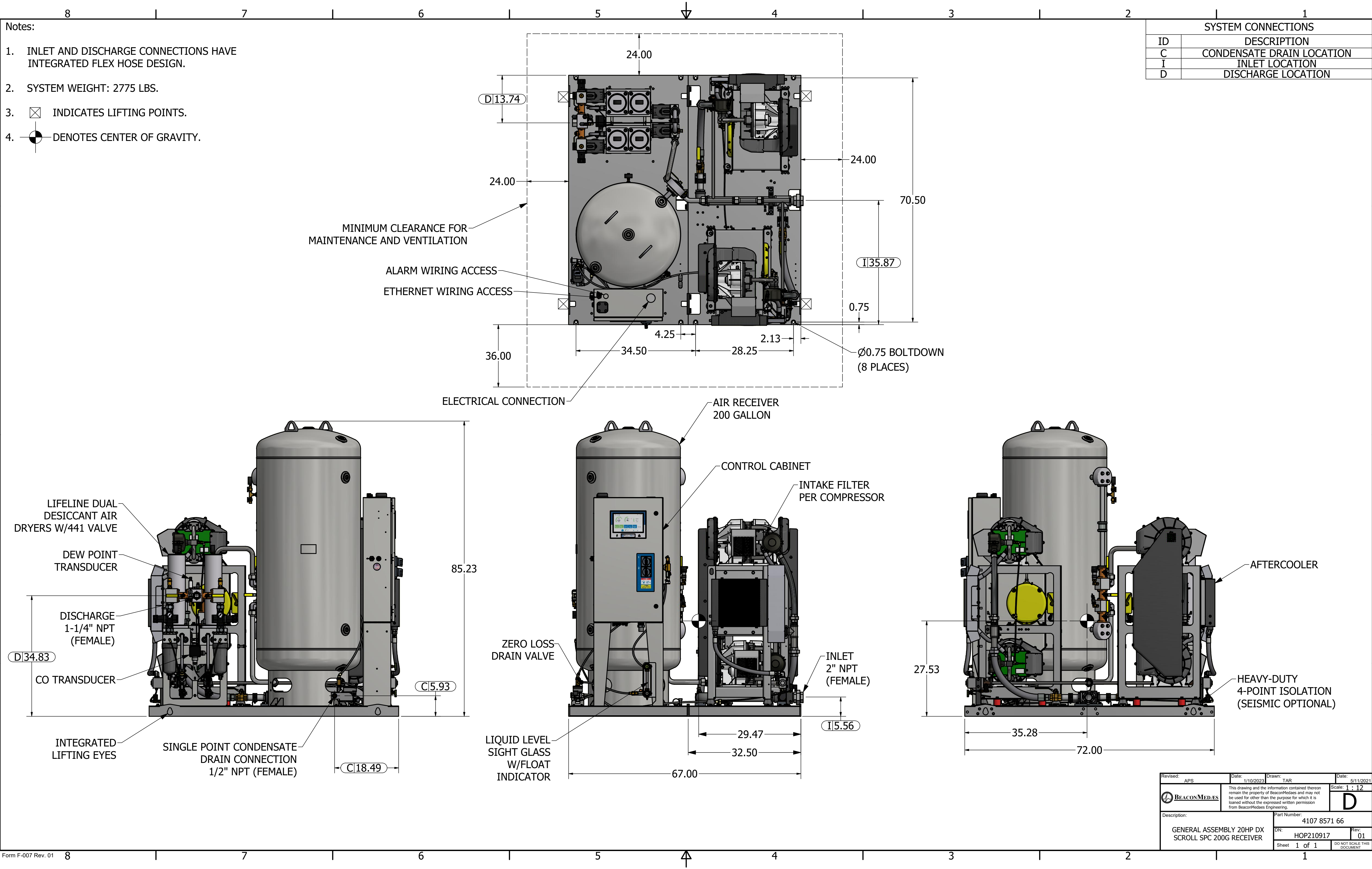
AIR RECEIVER
200 GALLON

CONTROL CABINET

INTAKE FILTER
PER COMPRESSOR

AFTERCOOLER

HEAVY-DUTY
4-POINT ISOLATION
(SEISMIC OPTIONAL)



Revised: APS	Date: 1/10/2023	Drawn: TAR	Date: 5/11/2021
		This drawing and the information contained therein remain the property of BeaconMedaes and may not be used for other than the purpose for which it is loaned without the expressed written permission from BeaconMedaes Engineering.	
Description: GENERAL ASSEMBLY 20HP DX SCROLL SPC 200G RECEIVER		Part Number: 4107 8571 66	
DN: HOP210917		Rev: 01	
Sheet 1 of 1		DO NOT SCALE THIS DOCUMENT	