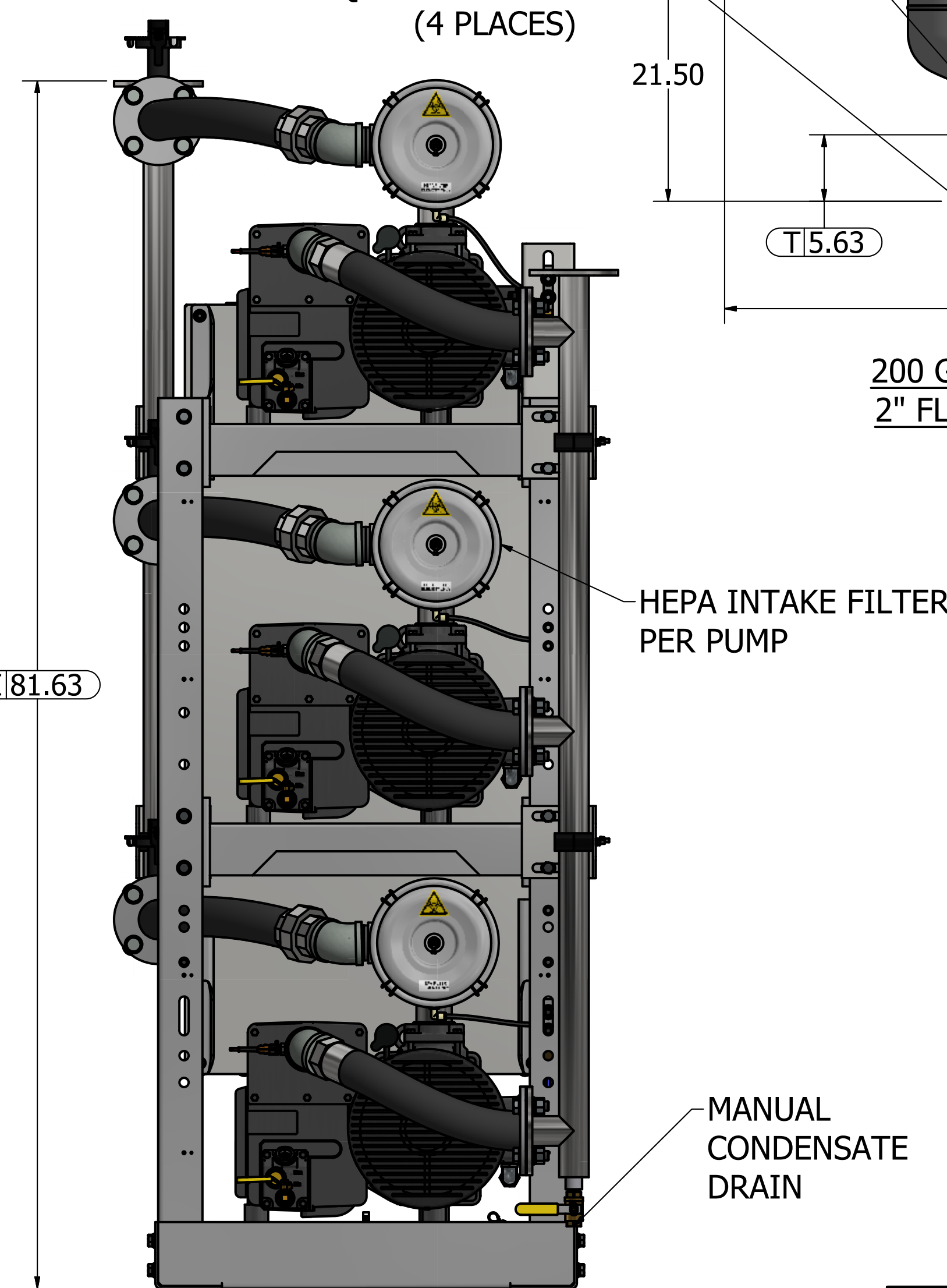
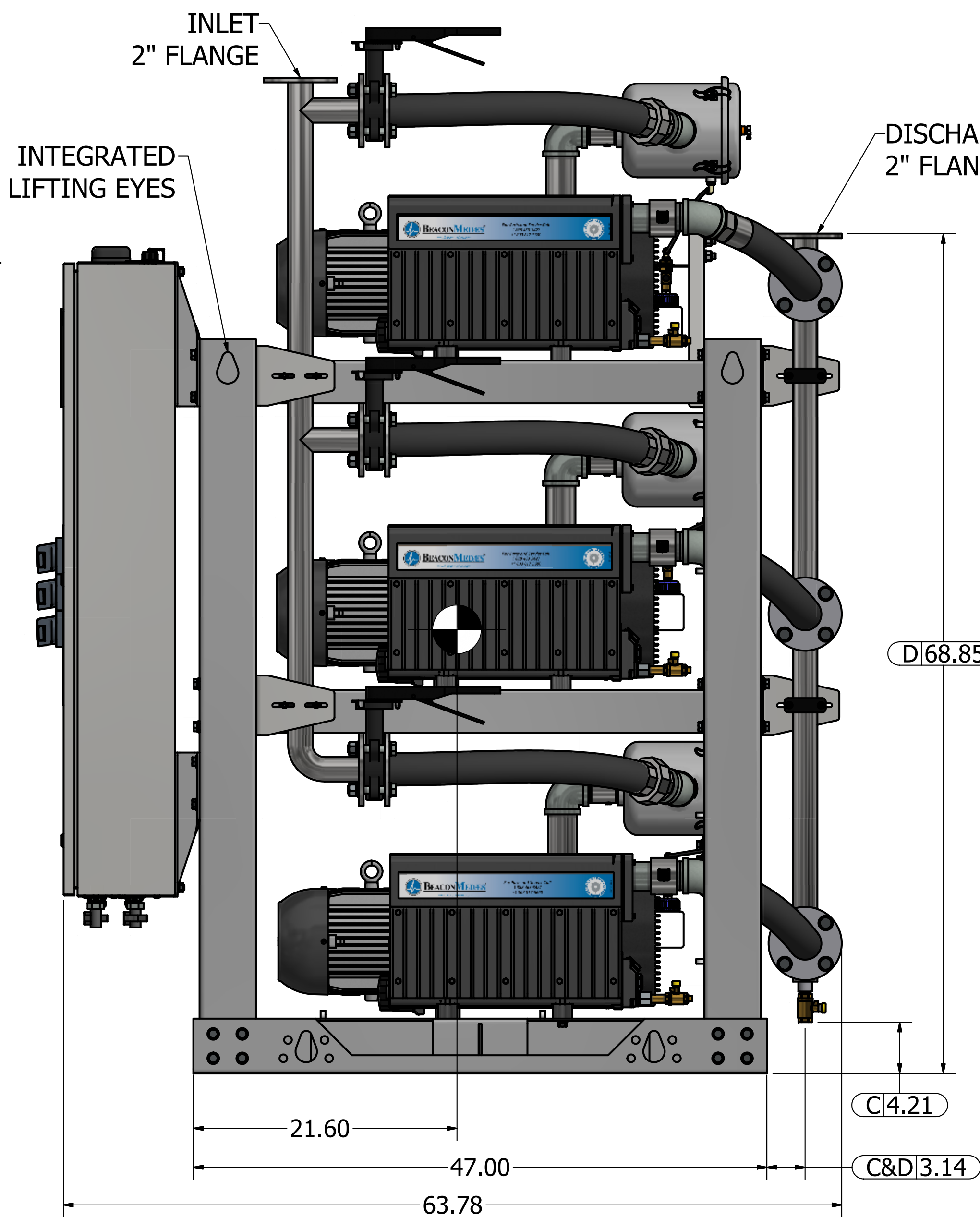
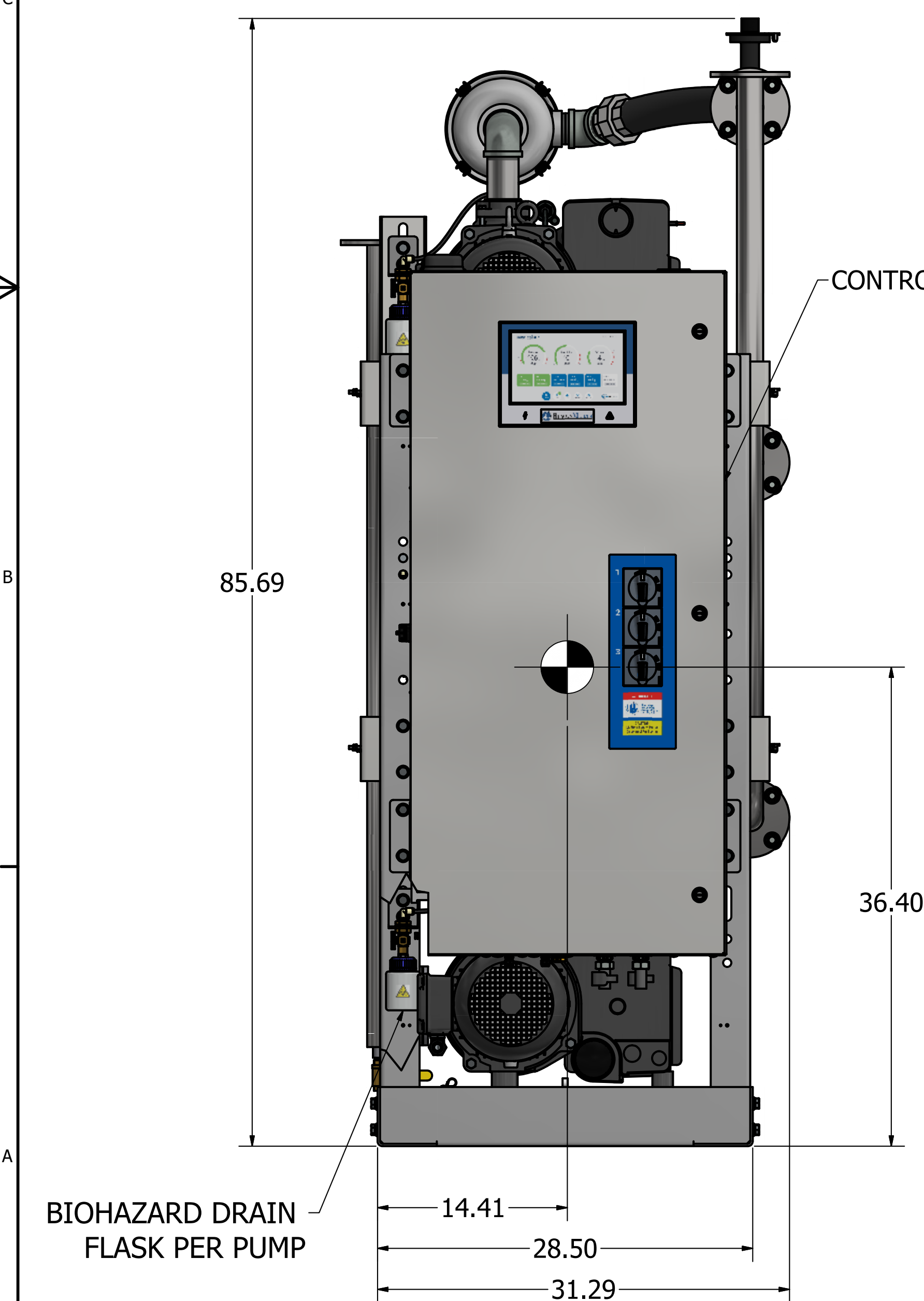
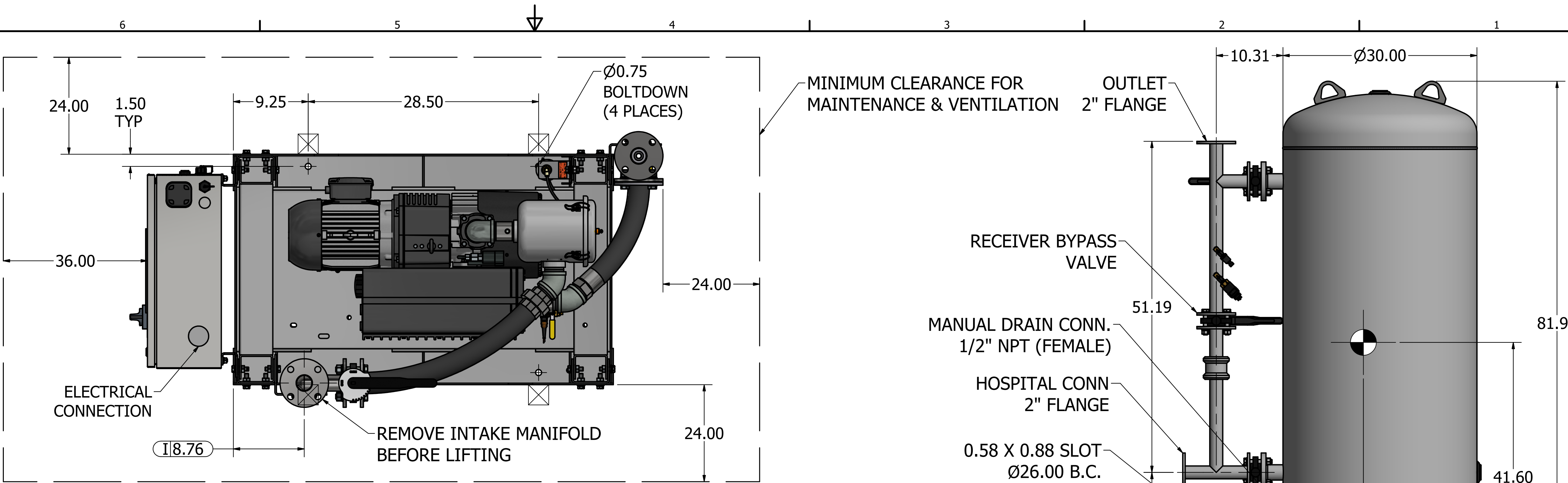


Notes:

- 1. TX MODULE WEIGHT: 1,553 LBS
200G TANK WEIGHT: 618 LBS
- 2. ☒ INDICATES LIFTING POINT.
- 3. ● DENOTES CENTER OF GRAVITY.

SYSTEM CONNECTIONS	
ID	DESCRIPTION
I	INLET LOCATION
D	DISCHARGE LOCATION
C	CONDENSATE DRAIN LOCATION
T	TANK DRAIN LOCATION



Revised: APS	Date: 3/7/2023	Drawn: USNKW	Date: 10/21/2010
BEACONMEDIES		Scale: D	
Description: GENERAL ASSEMBLY 5HP TX LUBE VAC MOD 200G RECEIVER		Part Number: 4107 8522 15	
Sheet 1 of 1		Rev: 04	