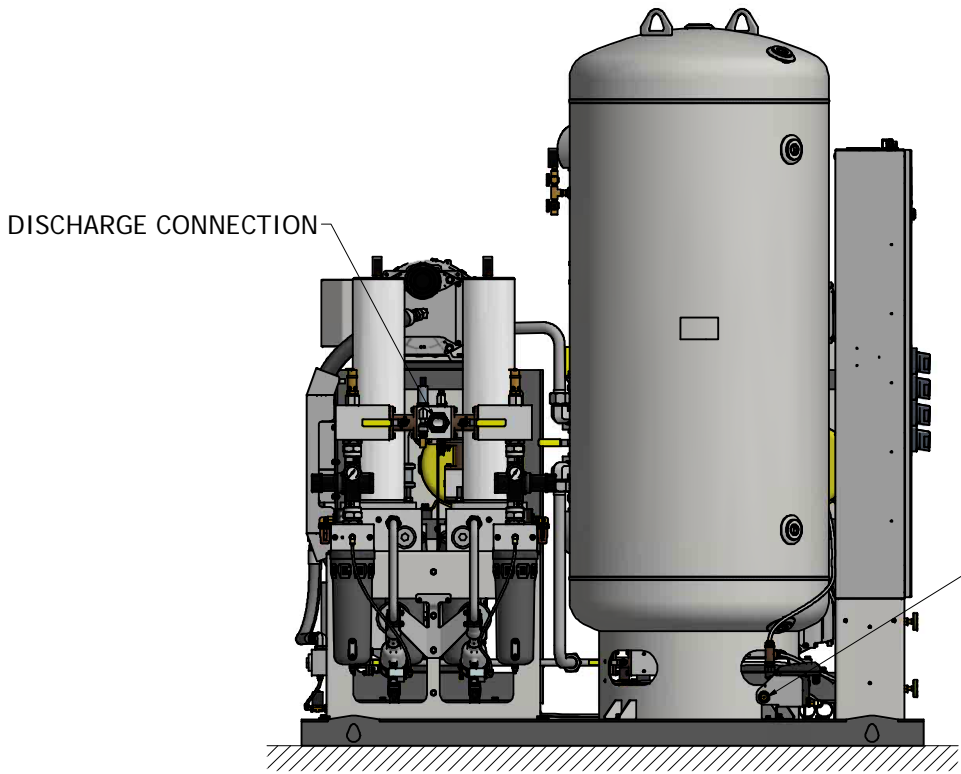
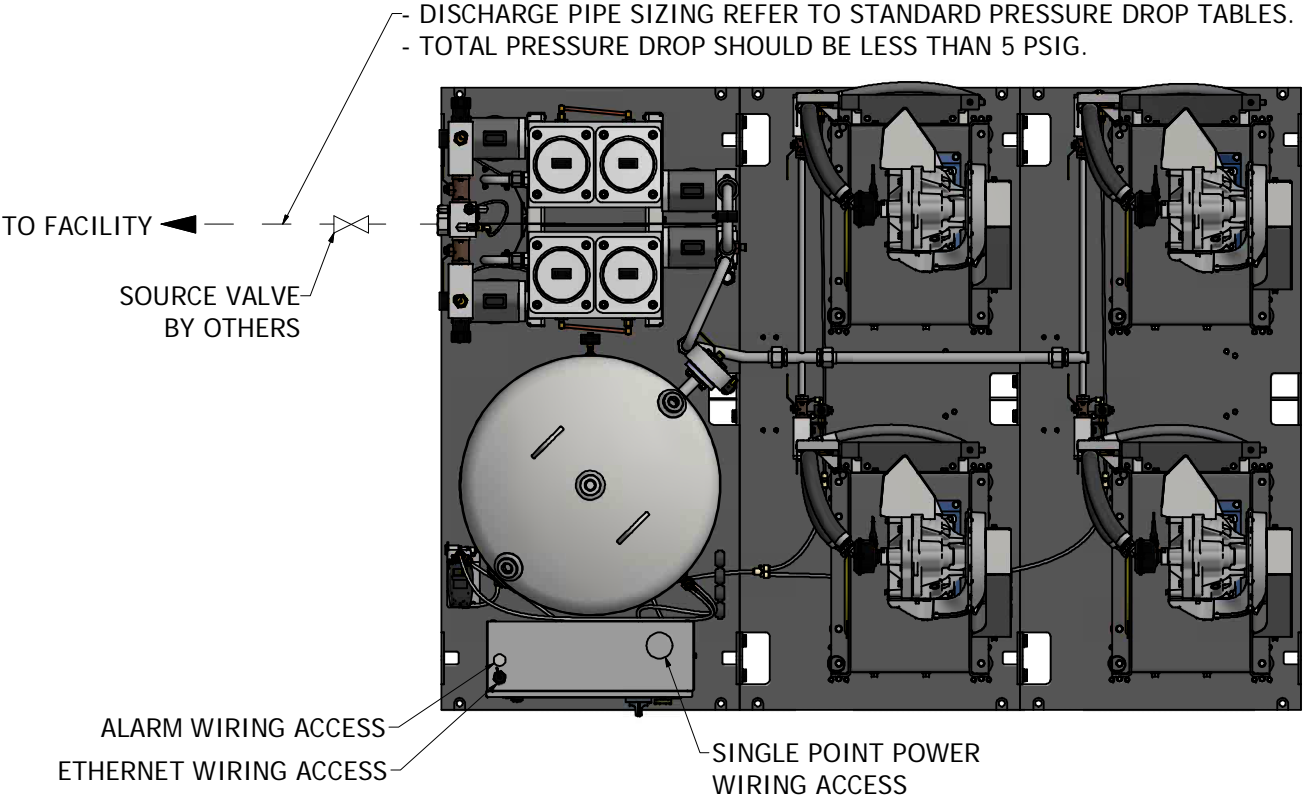


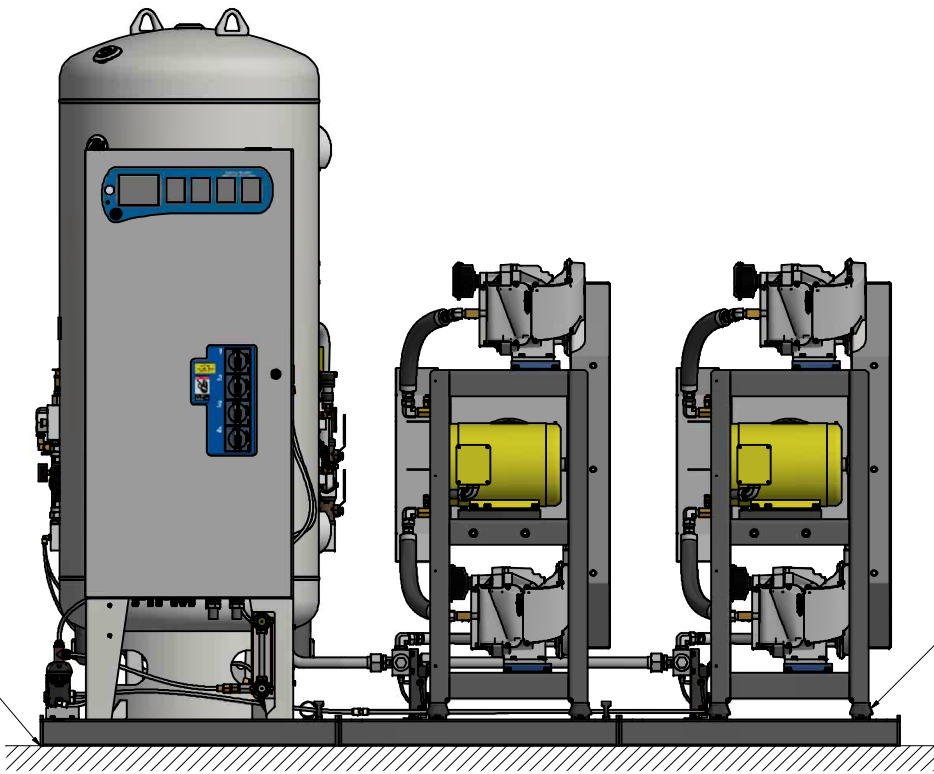
- Notes:
1. ALL INTERCONNECTING PIPE AND FITTINGS SHALL BE INSTALLED BY THE CONTRACTOR.
  2. PIPING LAYOUT IS DIAGRAMMATIC ONLY. FINAL ARRANGEMENT WILL BE SITE SPECIFIC. CONTRACTOR WILL BE RESPONSIBLE FOR FIELD VERIFICATION AND COORDINATING ACTUAL LOCATION WITH ALL OTHER TRADES.
  3. CONTRACTOR SHALL VERIFY MOTOR VOLTAGE, PHASE, AND AMP RATINGS BEFORE STARTING ELECTRICAL INSTALLATION; AND MAKE CERTAIN THE VOLTAGE SUPPLIED BY THE FACILITY IS THE SAME.
  4. THE ROOM REQUIRES DEDICATED MECHANICAL VENTILATION WITH AN ALLOWABLE TEMPERATURE VARIANCE OF 40° TO 105°. (FOR HIGHER AMBIENTS, CONSULT FACTORY).
  5. ALLOW 36 INCHES IN FRONT OF CONTROL PANEL FOR MAINTENANCE AND VENTILATION, ALL OTHER SIDES REQUIRE 24 INCHES OF CLEARANCE.
  6. ALL ACCESSORIES, PIPE, AND FITTINGS BEYOND DISCHARGE PORTS ARE SUPPLIED AND INSTALLED BY OTHERS.



NO FOUNDATION OR INERTIA PAD IS REQUIRED  
(HOUSEKEEPING PAD IS OPTIONAL)

SINGLE POINT DRAIN  
CONNECTION, CONTRACTOR  
SHALL PIPE TO FLOOR DRAIN.

NO VIBRATION PADS ARE  
NECESSARY AT THIS LOCATION



NOTE:  
ALL ACCESSORIES, PIPE, AND  
FITTINGS BEYOND INLET AND  
DISCHARGE PORTS ARE SUPPLIED  
AND INSTALLED BY OTHERS.

(10HP WITH 200 GALLON RECEIVER SHOWN)

Revised: MDB	Date: 07/01/2019	Drawn: JDY	Date: 01/27/2011
BEACONMED/ES		D	
Description: INST DIA - LAB AIR QX SCROLL SPC 10-15HP 10 BAR W/ DESC DRYER		Drawing Number: 4107 8526 42 Rev: 02	
Sheet 1 of 1		DO NOT SCALE THIS DOCUMENT	