

Note X:
 -Text changed. MED labels removed. CG,mass updated
 - Air inlet flange details added
 - Mk-IV Elektronikon changed to Mk5
 -Dimension drawing standardized

Approx. Mass ±110 (LBS)	
Type	Pack
ZR37VSD	2915
ZR55VSD	2998

Center of Gravity ±2 (inch)	
Dim.	Pack
W	19.8
L	40.8
H	27.8

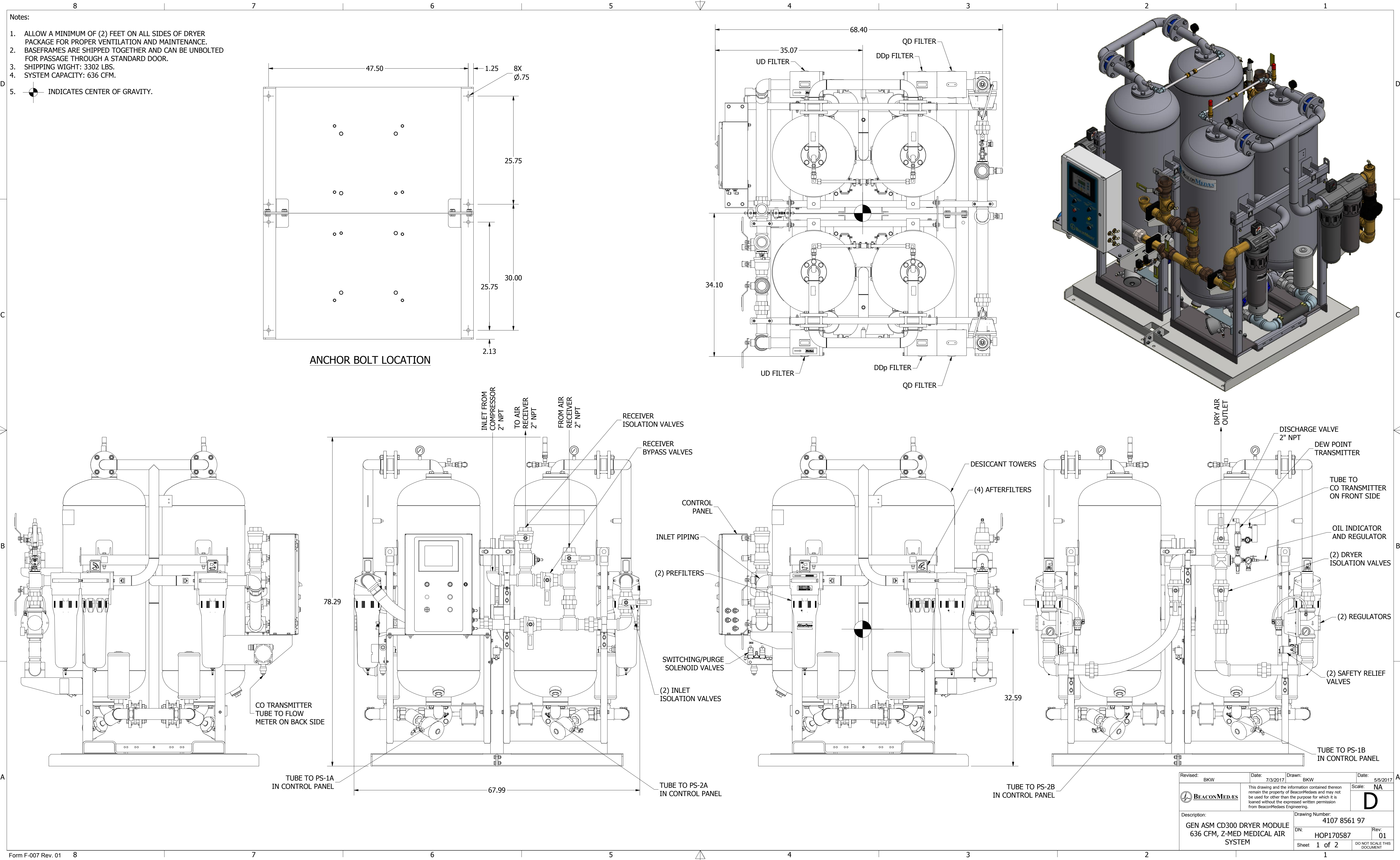
02	See Note X	2011-05-20	Ingev./Goedg. Intr./Appr.
Ed	Posi- tion	Gewijzigd van Modified from	Datum Date

All materials supplied are in compliance with the requirements of the List of Prohibited Substances

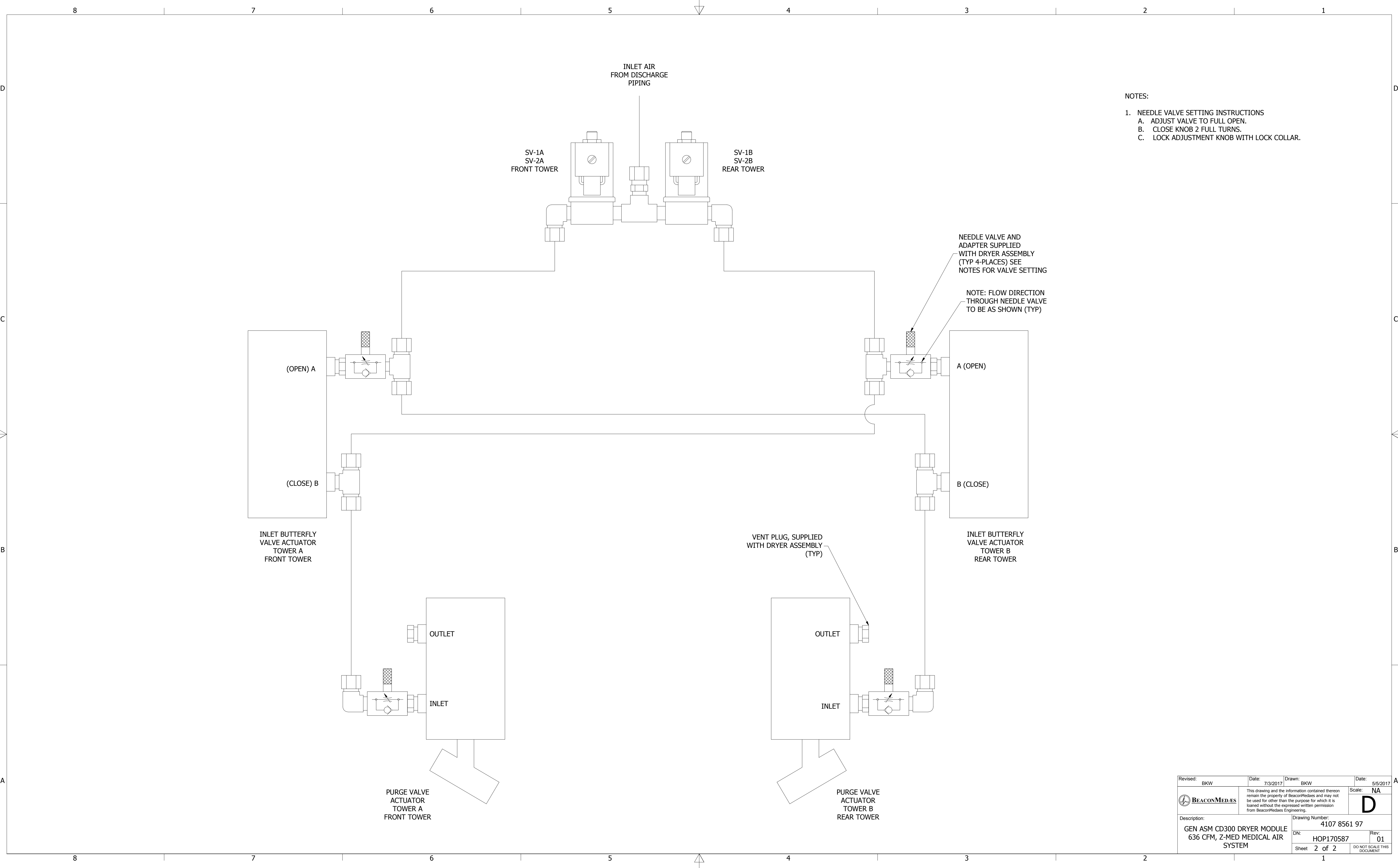
9820577300	02.10
Parent 3D model	Ed. Version 3D


Note:
 * With full open door

Tolerances, if not indicated, according to:			
ATLAS COPCO STANDARD CLASS			
Name	DIMENS.		ZR37-55VSD+MED
Material	NOT APPLICABLE		1102 K / 3
Treatment	Not Applicable		INV
Scale	1:10	Family	A/Compare
Drawn by	sraman	Blank nr.	Replaces
Version Drwg	02.11	Blank wt.	0 Kg
Des checked.	Prod checked.	Approved.	Date 2008-01-22
9820577300			Sheet 1 / 1
Approved			9820577300



Revised: BKW	Date: 7/3/2017	Drawn: BKW	Date: 5/5/2017
BEACONMEDAES		This drawing and the information contained therein remain the property of BeaconMedaes and may not be used for other than the purpose for which it is loaned without the expressed written permission from BeaconMedaes Engineering.	
Description: GEN ASM CD300 DRYER MODULE 636 CFM, Z-MED MEDICAL AIR SYSTEM		Drawing Number: 4107 8561 97	
DN: HOP170587		Rev: 01	Scale: NA
Sheet 1 of 2		DO NOT SCALE THIS DOCUMENT	



Revised: BKW	Date: 7/3/2017	Drawn: BKW	Date: 5/5/2017
 BEACONMEDAES	This drawing and the information contained therein remain the property of BeaconMedaes and may not be used for other than the purpose for which it is loaned without the expressed written permission from BeaconMedaes Engineering.		Scale: NA
Description: GEN ASM CD300 DRYER MODULE 636 CFM, Z-MED MEDICAL AIR SYSTEM		Drawing Number: 4107 8561 97	
DN: HOP170587		Rev: 01	Sheet 2 of 2
		DO NOT SCALE THIS DOCUMENT	

