



Note X:
 - Dimension drawing standardized
 - Air inlet flange details added
 - Mk-IV Elektronikon changed to Mk5

Approx. Mass ±110 (LBS)		Center of gravity ±2 (inch)	
Type	Pack	Dim	Pack
ZT37/VSD	3155	W	20.4
ZT55/VSD	3274	L	44.8
		H	29.6

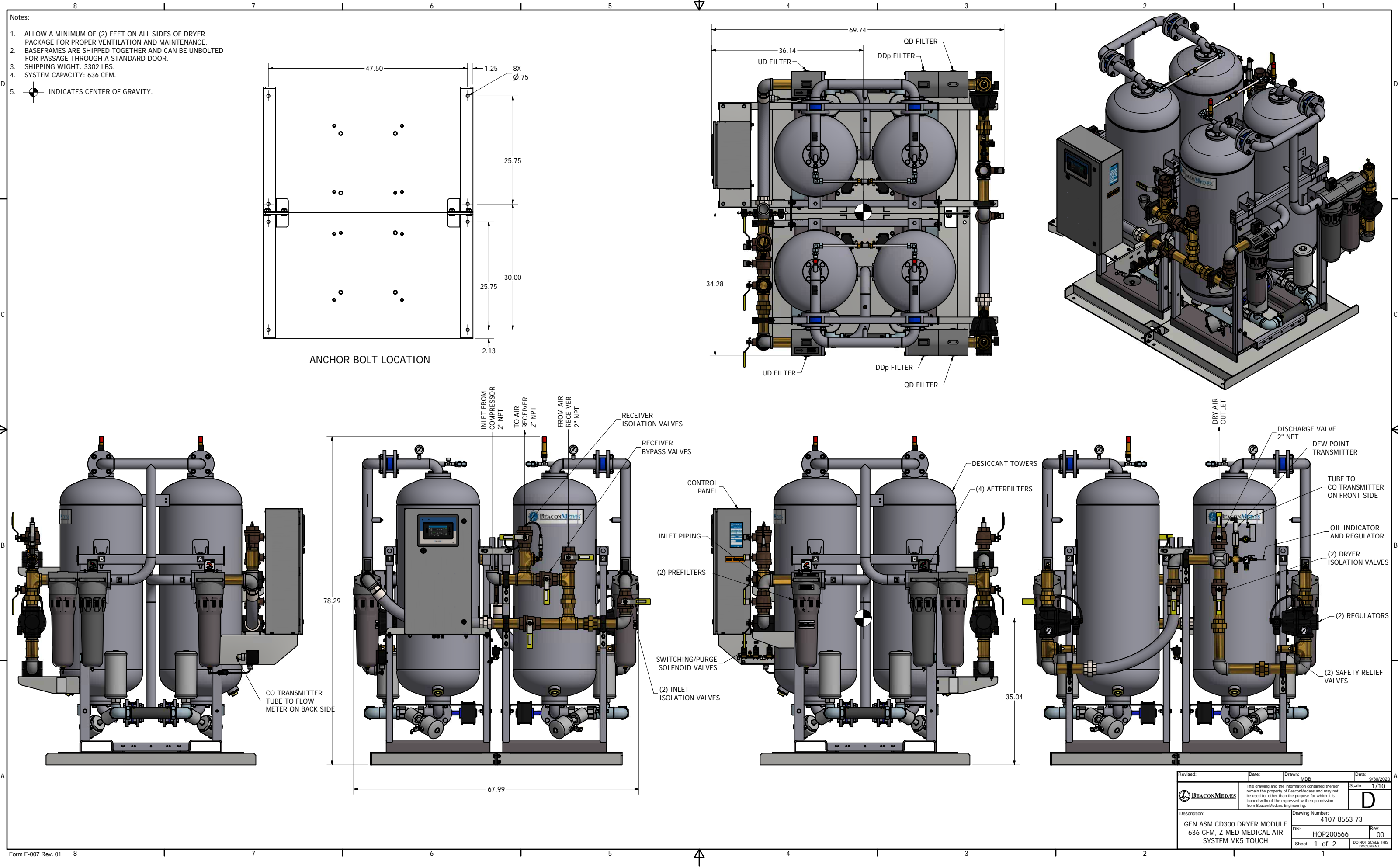
Ed	Position	See Note X	Geplagd van	2011-05-20	Ingev/Goedg.
			Modified from	Date	Int./App.

All materials supplied are in compliance with the requirements of the List of Prohibited Substances

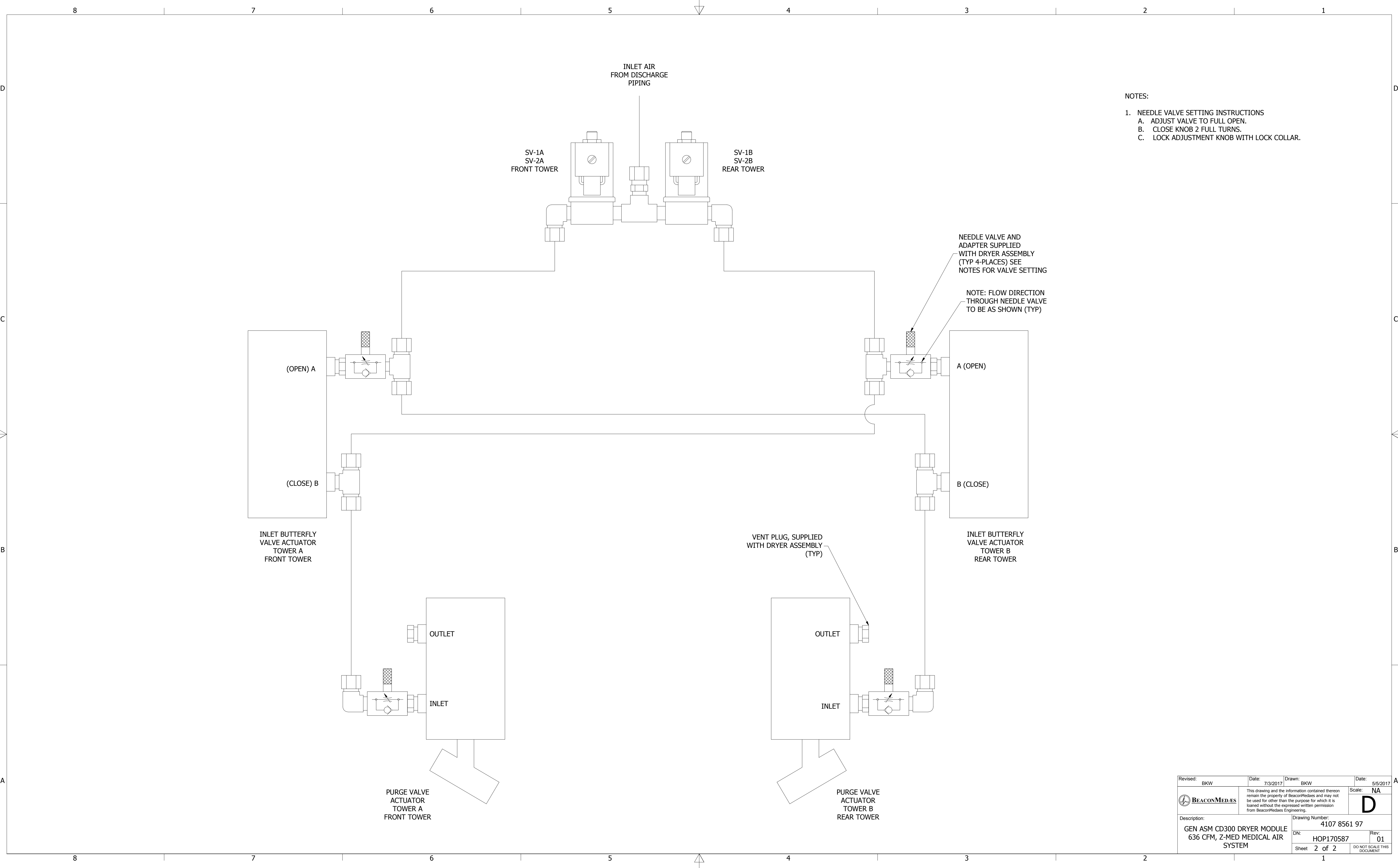
9820577200	01.11
Parent 3D model	Ed. Version 3D


Tolerances, if not indicated, according to:								
ATLAS COPCO STANDARD CLASS								
Name		DIMENS.				ZT37-55VSD+MED		Secrecy Class
Material		NOT APPLICABLE				1/2K/ 3		
Treatment		Not Applicable				INV		
		Scale 1:10		Family		A/ Compare		Drawing owner
		Drawn by saman		Blank nc		Replaces		All
Version Dwg 02.13		Blank wt.		0 Kg FRI wt.		452,918 Kg		Designation
Des checked.		Prod checked.		Approved.		Date 2009-01-02		Sheet 1 / 1
Approved		9820577200						

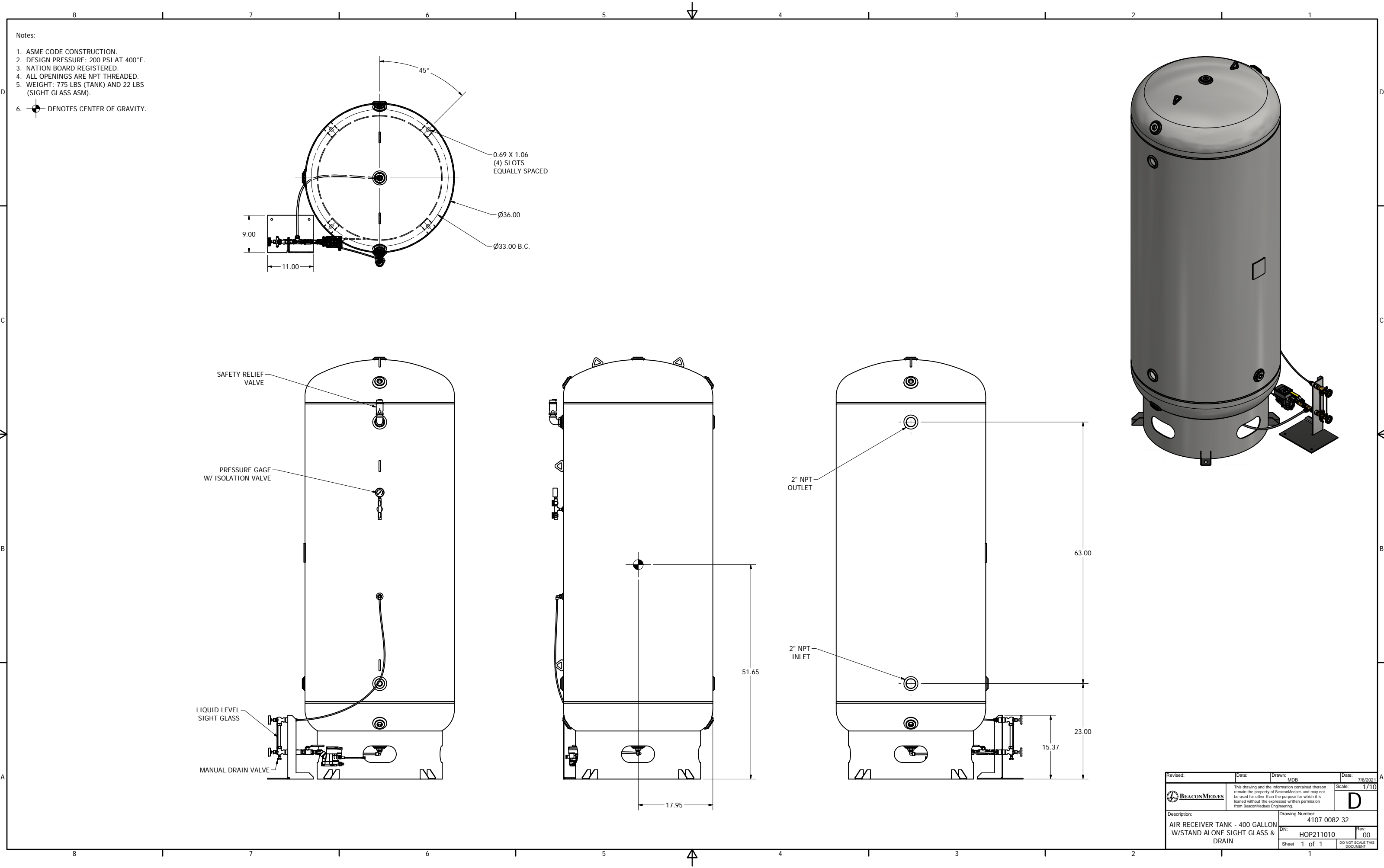
Note:
 * With full open door



- Notes:
1. ALLOW A MINIMUM OF (2) FEET ON ALL SIDES OF DRYER PACKAGE FOR PROPER VENTILATION AND MAINTENANCE. BASEFRAMES ARE SHIPPED TOGETHER AND CAN BE UNBOLTED FOR PASSAGE THROUGH A STANDARD DOOR.
 2. SHIPPING WIGHT: 3302 LBS.
 3. SYSTEM CAPACITY: 636 CFM.
 4. INDICATES CENTER OF GRAVITY.



Revised: BKW	Date: 7/3/2017	Drawn: BKW	Date: 5/5/2017
 BEACONMEDAES	This drawing and the information contained therein remain the property of BeaconMedaes and may not be used for other than the purpose for which it is loaned without the expressed written permission from BeaconMedaes Engineering.		Scale: NA
Description: GEN ASM CD300 DRYER MODULE 636 CFM, Z-MED MEDICAL AIR SYSTEM		Drawing Number: 4107 8561 97	
DN: HOP170587		Rev: 01	
Sheet 2 of 2		DO NOT SCALE THIS DOCUMENT	



Revised:	Date:	Drawn: MDB	Date: 7/8/2021
BEACONMEDES	This drawing and the information contained therein remain the property of BeaconMedes and may not be used for other than the purpose for which it is loaned without the expressed written permission from BeaconMedes Engineering.		Scale: 1/10
Description: AIR RECEIVER TANK - 400 GALLON W/STAND ALONE SIGHT GLASS & DRAIN		Drawing Number: 4107 0082 32	Rev: 00
Sheet 1 of 1		DN: HOP211010	DO NOT SCALE THIS DOCUMENT