

Note X:
 -Text changed. MED labels removed. CG,mass updated
 - Air inlet flange details added
 - Mk-IV Elektronikon changed to Mk5
 -Dimension drawing standardized

| Approx. Mass ±110 (LBS) | | Center of Gravity ±2 (inch) | |
|-------------------------|------|-----------------------------|------|
| Type | Pack | Dim. | Pack |
| ZR37VSD | 2915 | W | 19.8 |
| ZR55VSD | 2998 | L | 40.8 |
| | | H | 27.8 |

| Ed | Posi- tion | See Note X | Gewijzigd van Modified from | 2011-05-20 Datum Date | Ingev./Goedg. Intr./Appd. |
|----|---------------|------------|--------------------------------|-----------------------------|------------------------------|
| | | | | | |

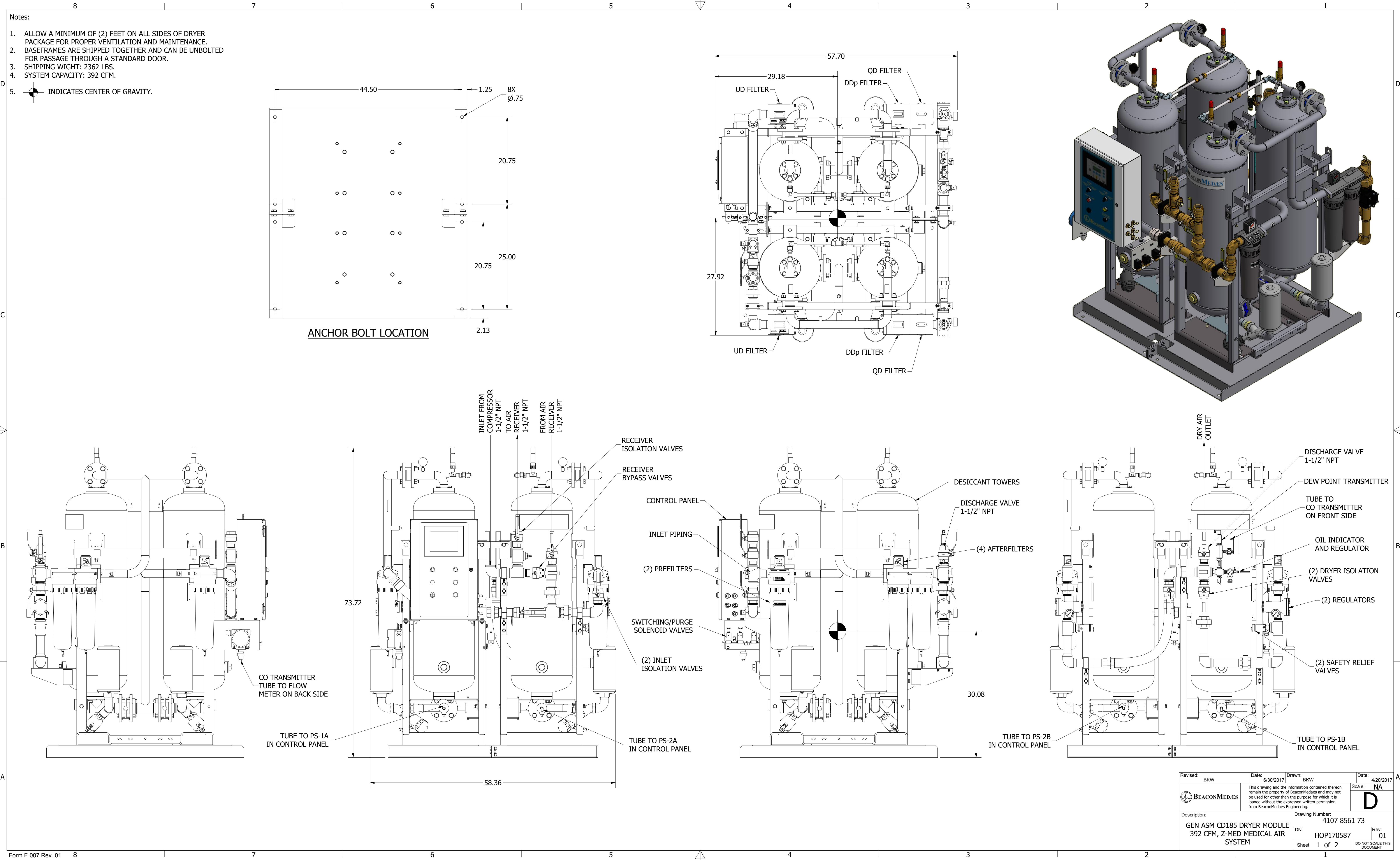
All materials supplied are in compliance with the requirements of the List of Prohibited Substances

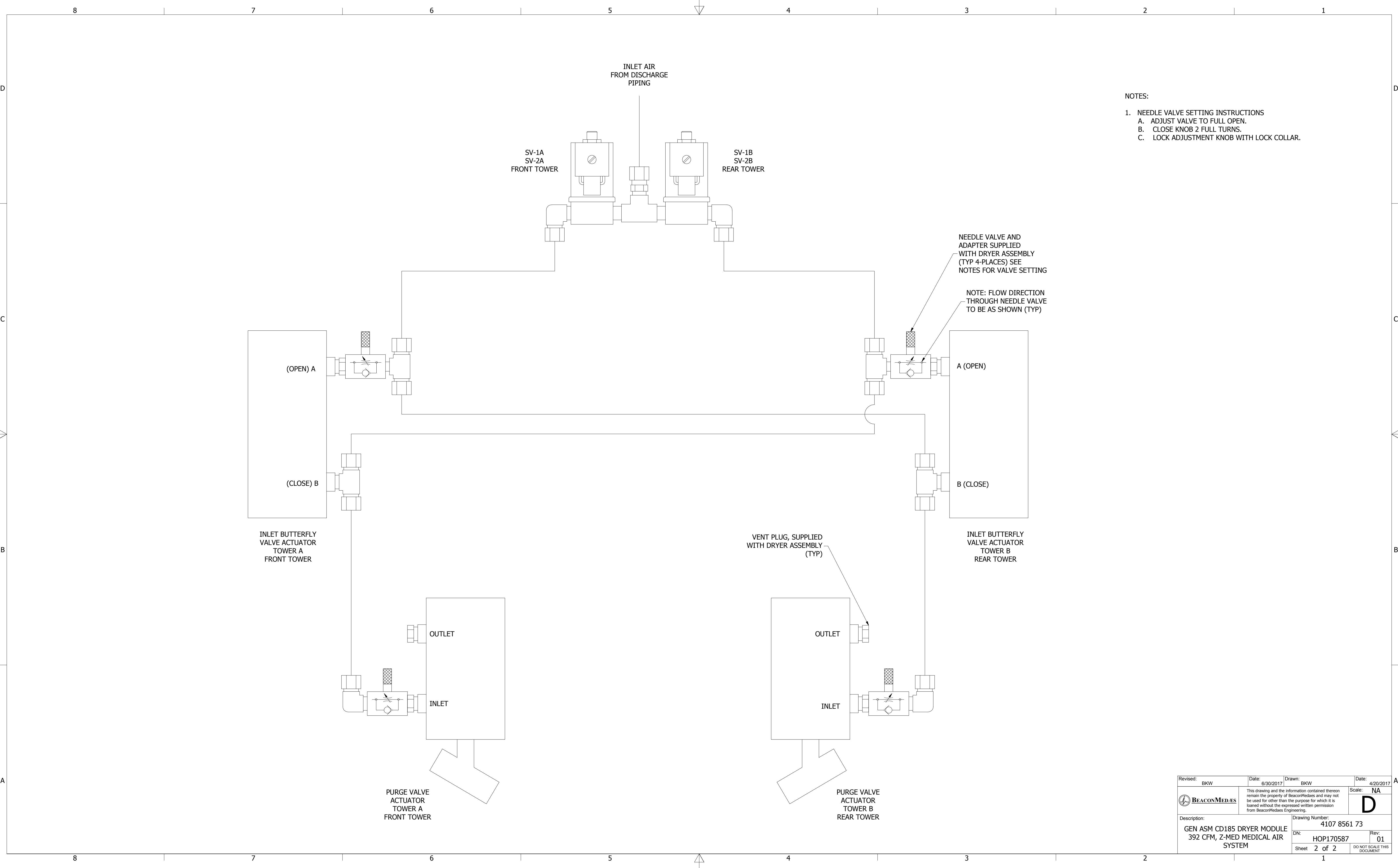
| | |
|-----------------|----------------|
| 9820577300 | 02.10 |
| Parent 3D model | Ed. Version 3D |

Note:
 * With full open door

| | | | | | |
|---|----------------|-----------|----------------|------------|---------------|
| Tolerances, if not indicated, according to: | | | | | |
| ATLAS COPCO STANDARD CLASS | | | | | |
| Name | DIMENS. | | ZR37-55VSD+MED | | Secrecy Class |
| Material | NOT APPLICABLE | | | | 1102 K / 3 |
| Treatment | Not Applicable | | | | INV |
| Scale | 1:10 | Family | A/Compare | | Drawing owner |
| Drawn by | sraman | Blank nr. | Replaces | | ALL |
| Version Drwg | 02.11 | Blank wt. | 0 Kg | Final wt. | 444.135 Kg |
| Des checked. | Prod checked. | Approved. | Date | 2008-01-22 | |
| Approved | | | | | 9820577300 |

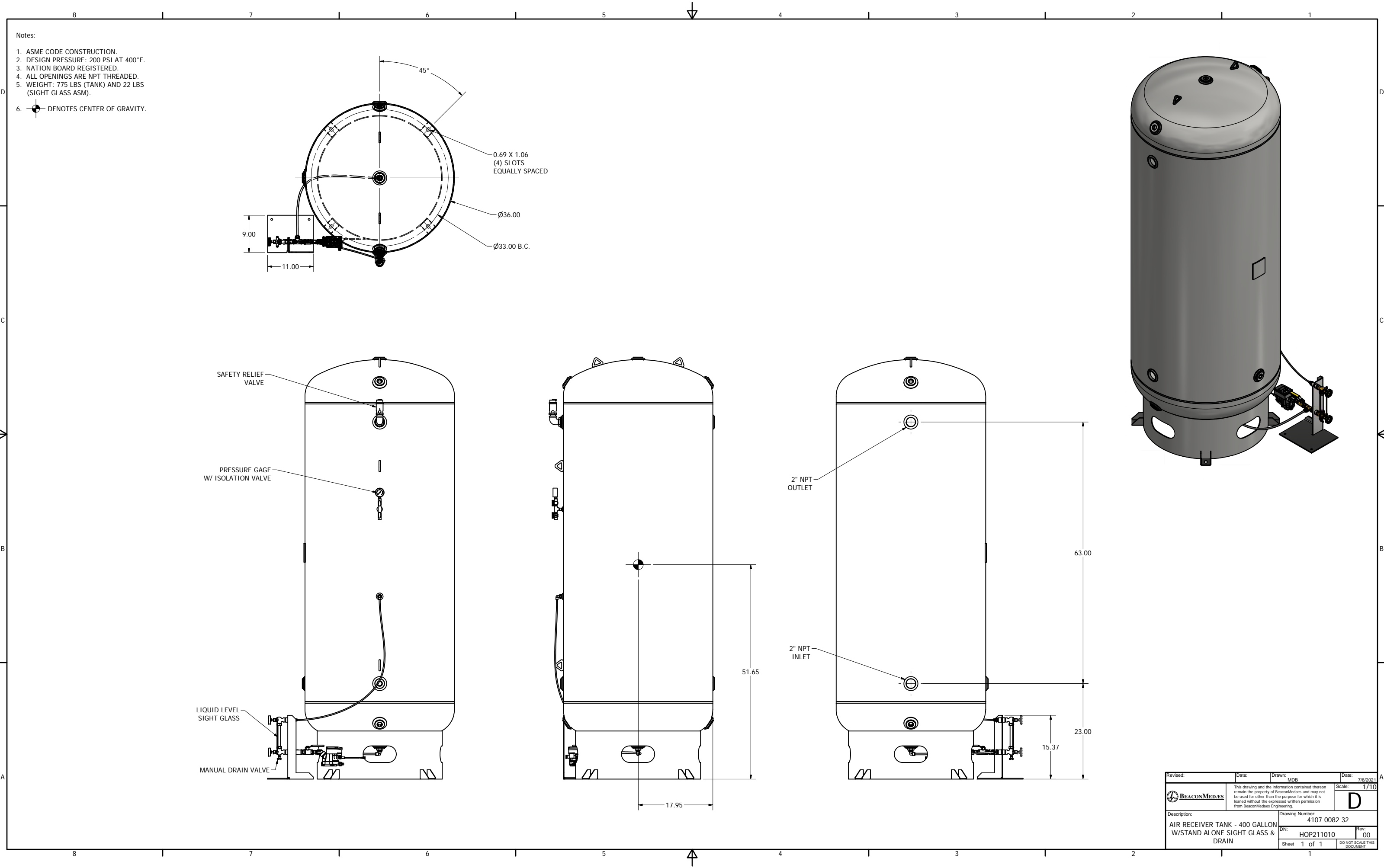
Sheet 1 / 1





- NOTES:
- NEEDLE VALVE SETTING INSTRUCTIONS
 - ADJUST VALVE TO FULL OPEN.
 - CLOSE KNOB 2 FULL TURNS.
 - LOCK ADJUSTMENT KNOB WITH LOCK COLLAR.

| | | | |
|--|--|---------------------------------|----------------------------|
| Revised: BKW | Date: 6/30/2017 | Drawn: BKW | Date: 4/20/2017 |
| | This drawing and the information contained therein remain the property of BeaconMedaes and may not be used for other than the purpose for which it is loaned without the expressed written permission from BeaconMedaes Engineering. | | Scale: NA |
| | | | D |
| Description: GEN ASM CD185 DRYER MODULE 392 CFM, Z-MED MEDICAL AIR SYSTEM | | Drawing Number: 4107 8561 73 | |
| | | DN: HOP170587 | Rev: 01 |
| | | Sheet 2 of 2 | DO NOT SCALE THIS DOCUMENT |



| | | | |
|--|-------|---------------------------------|----------------|
| Revised: | Date: | Drawn: MDB | Date: 7/8/2021 |
| Description: AIR RECEIVER TANK - 400 GALLON W/STAND ALONE SIGHT GLASS & DRAIN | | Drawing Number: 4107 0082 32 | |
| DN: HOP211010 | | Rev: 00 | |
| Sheet 1 of 1 | | DO NOT SCALE THIS DOCUMENT | |