

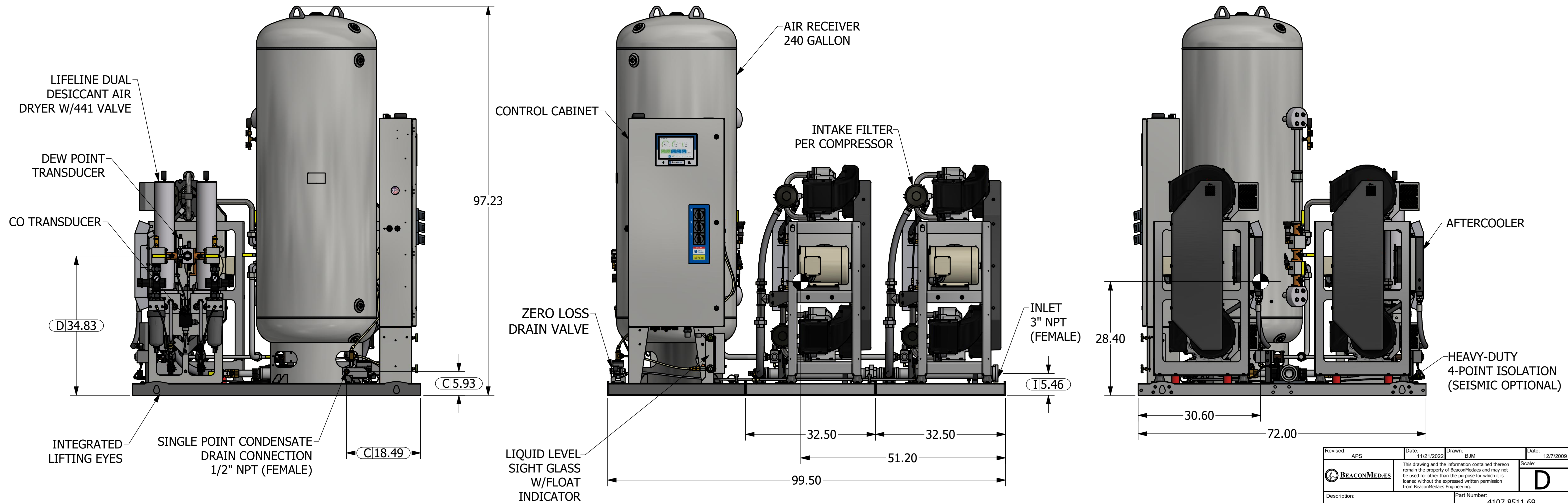
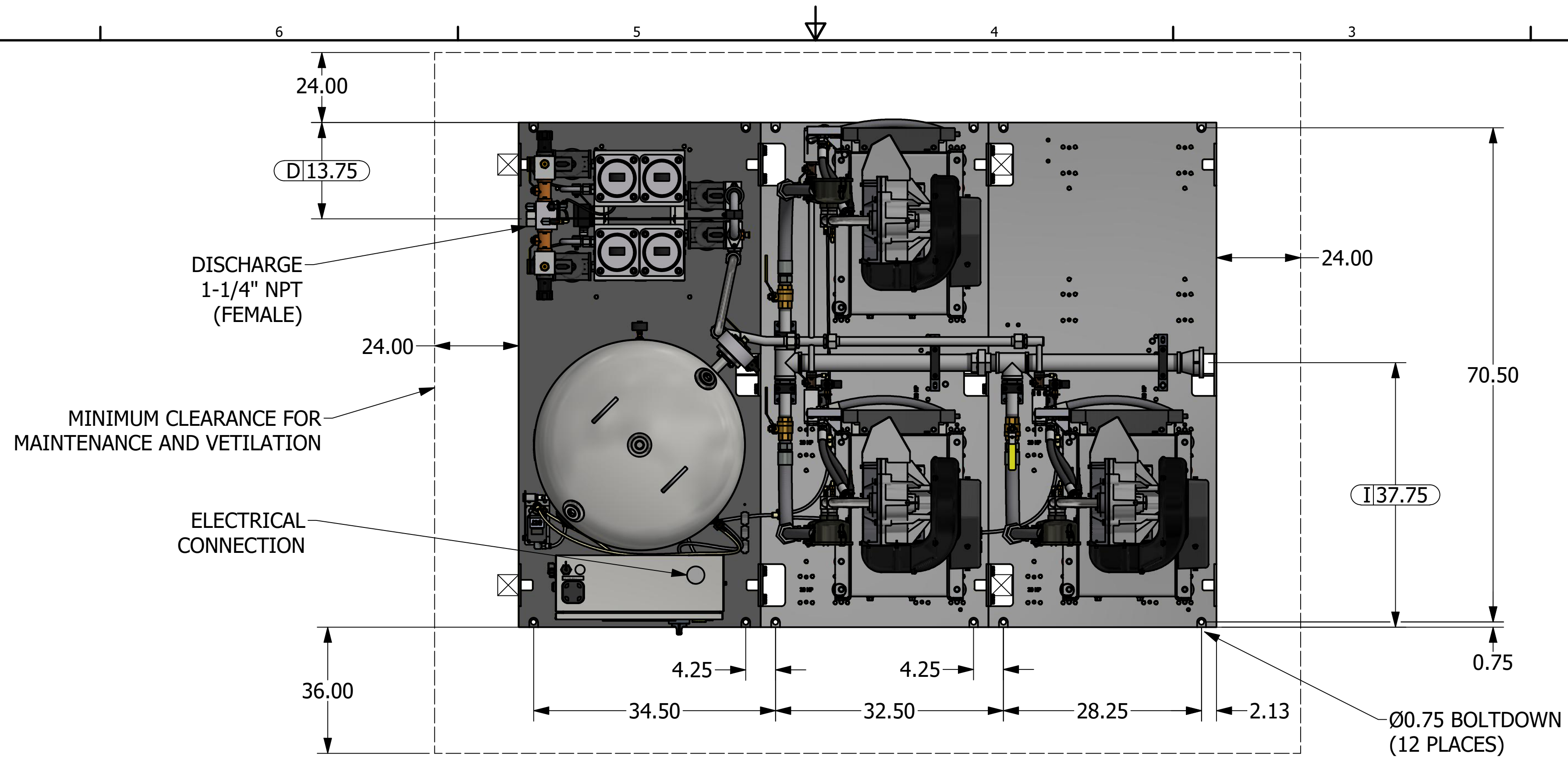



1. INLET AND DISCHARGE CONNECTIONS HAVE INTEGRATED FLEX HOSE DESIGN.
2. SYSTEM WEIGHT: 3351 LBS.
3.  INDICATES LIFTING POINTS.
4.  DENOTES CENTER OF GRAVITY.

SYSTEM CONNECTIONS	
ID	DESCRIPTION
C	CONDENSATE DRAIN LOCATION
I	INLET LOCATION
D	DISCHARGE LOCATION



Revised:	APS	Date:	11/21/2022	Drawn:	BJM	Date:	12/7/2009
		This drawing and the information contained therein remain the property of BeaconMedes and may not be used for other than the purpose for which it is loaned without the expressed written permission from BeaconMedes Engineering.					
Description:				Part Number:		<div style="border: 1px solid black; padding: 5px; display: inline-block;"> D </div>	
GENERAL ASSEMBLY 15HP TX SCROLL SPC 240G ICEIVER		4107 8511 69		DN:		Rev:	
		HOP220663		04			
		Sheet 1 of 1		DO NOT SCALE THIS DOCUMENT			