
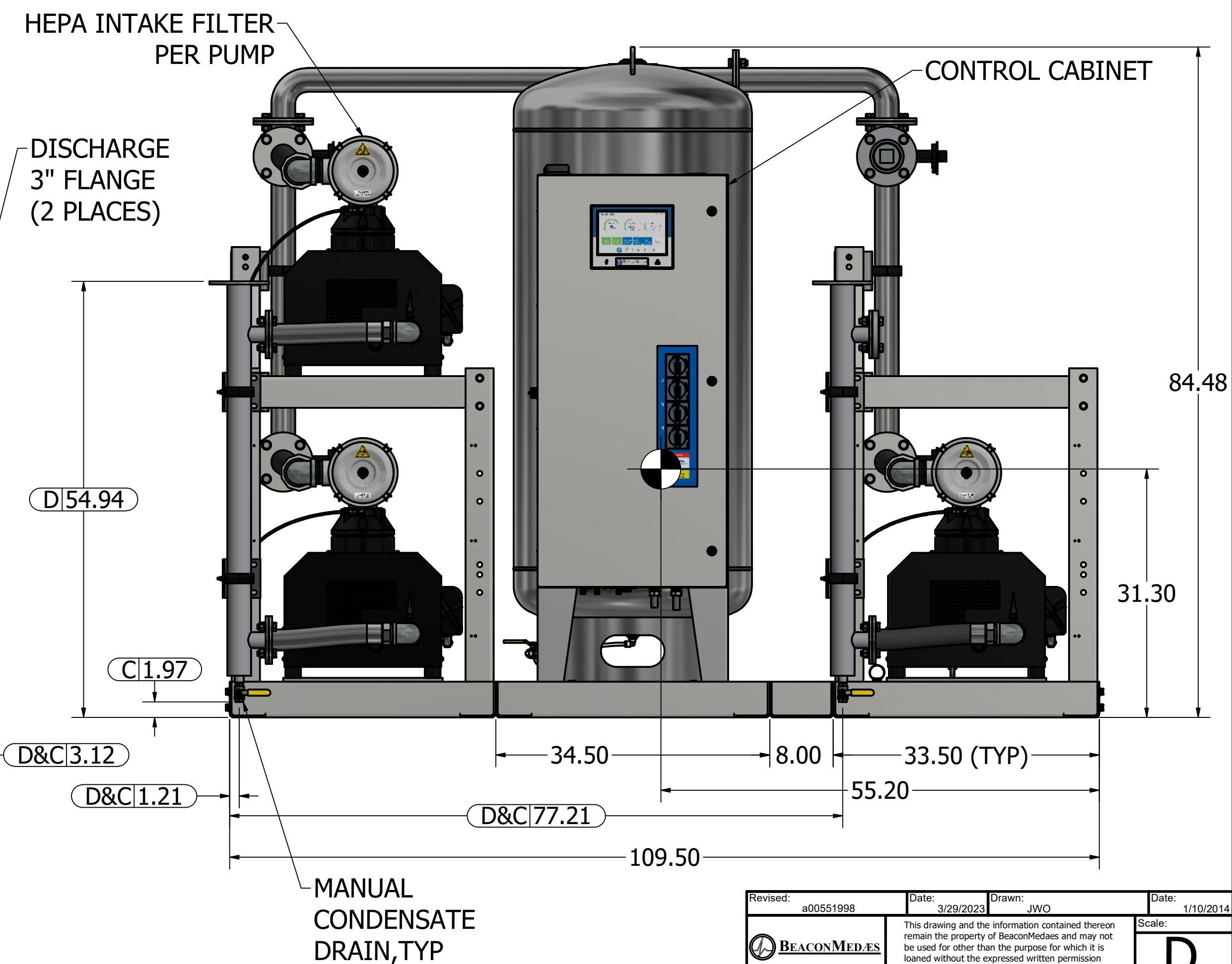
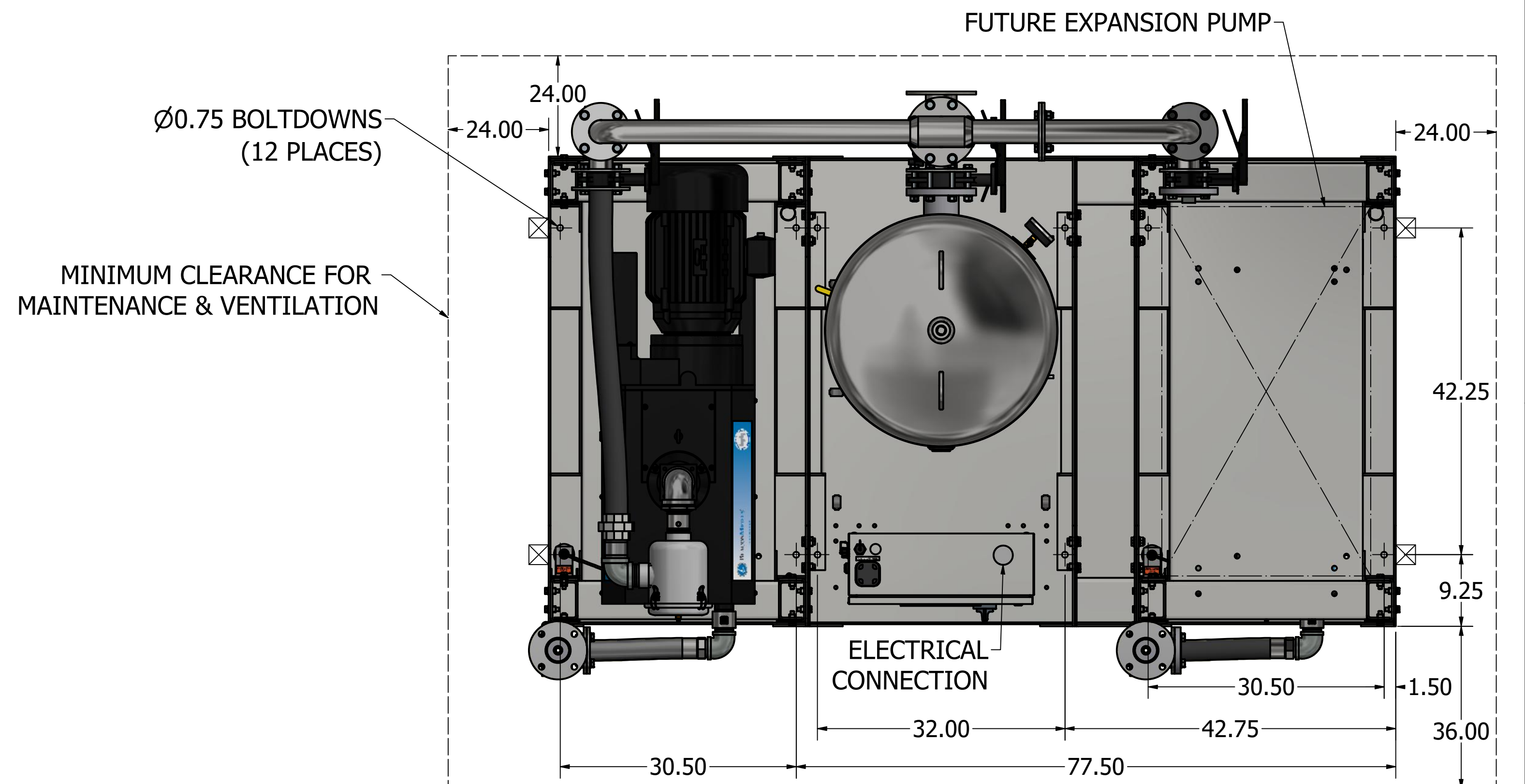
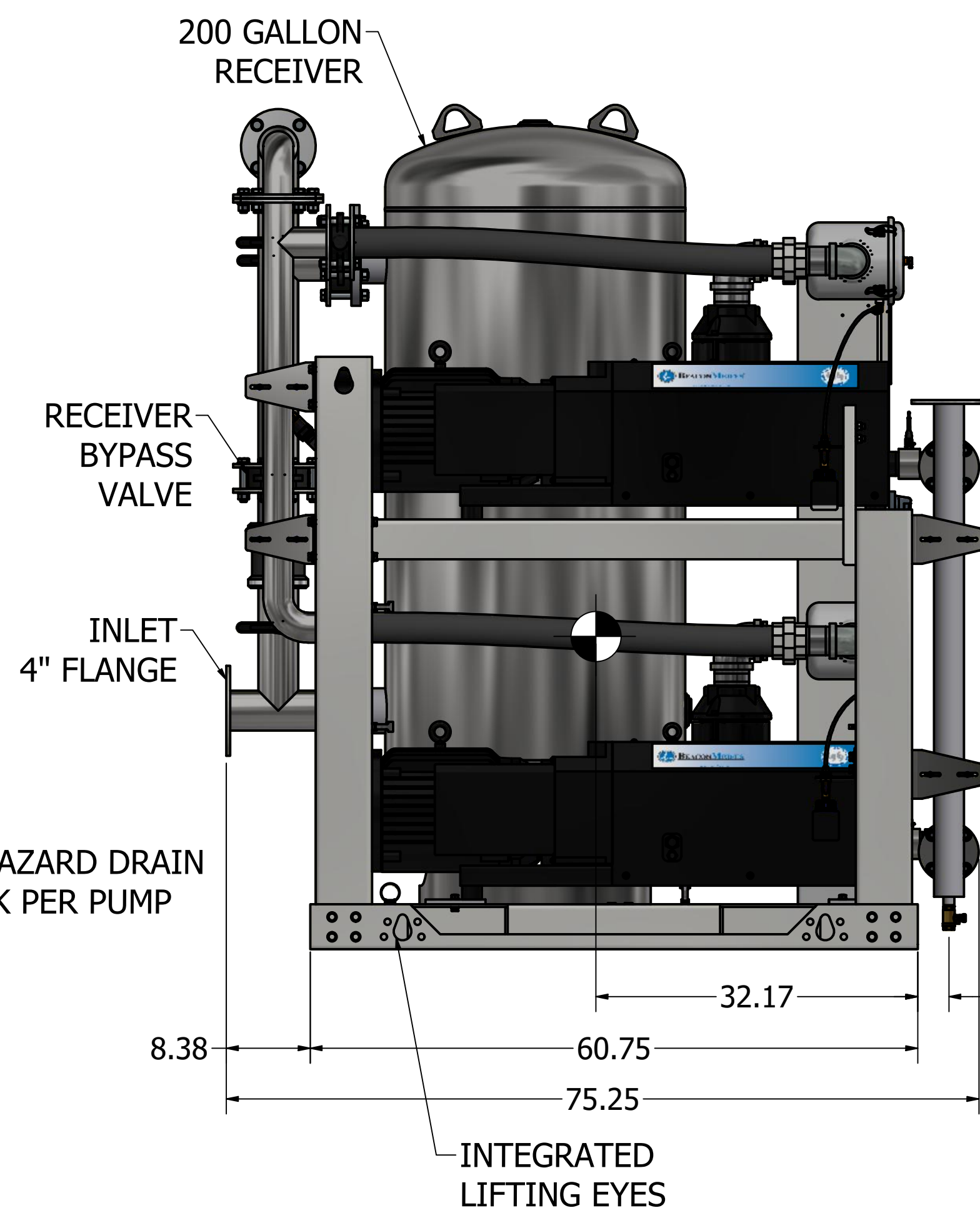
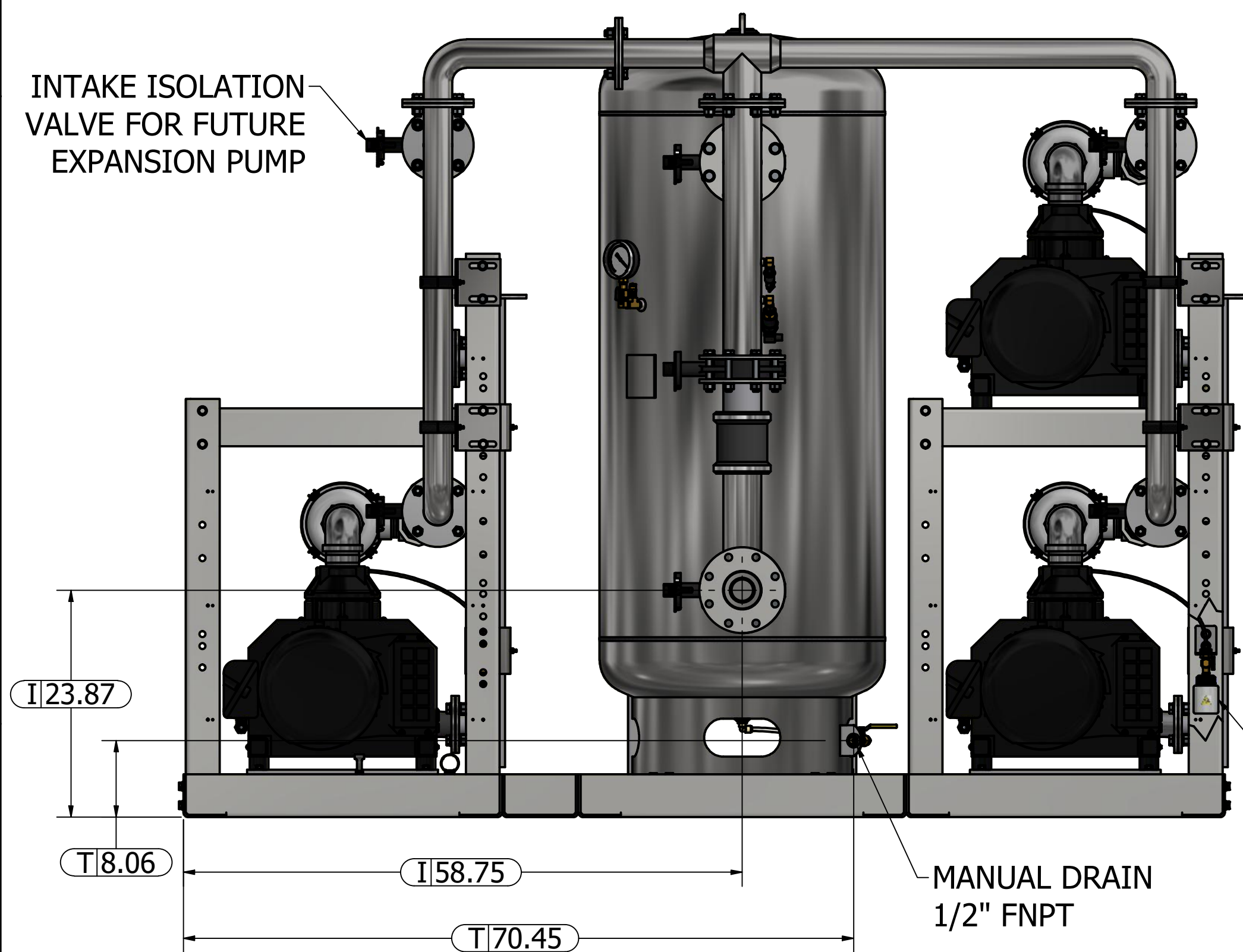




Notes:

1. DISCHARGE MUFFLERS WILL BE SHIPPED LOOSE.
2. SYSTEM WEIGHT: 5,609 LBS.
(INCLUDES FUTURE EXPANSION PUMP)
3. ☒ INDICATES LIFTING POINT.
4.  DENOTES CENTER OF GRAVITY.
(INCLUDES FUTURE EXPANSION PUMP)

SYSTEM CONNECTIONS	
ID	DESCRIPTION
I	INLET LOCATION
D	DISCHARGE LOCATION
T	TANK DRAIN LOCATION
C	CONDENSATE DRAIN LOCATION



Revised:	a00551998	Date:	3/29/2023	Drawn:	JWO	Date:	1/10/2014
 BEACON MEDICS		This drawing and the information contained therein represent the property of BeaconMedics and may not be used for other than the purpose for which it is loaned without the expressed written permission from BeaconMedics Engineering.				Scale:	
Description:		Part Number:					
GENERAL ASSEMBLY 15HP		4107 8549 52					
TX-EXP-QX CLAW VAC SPC 200G RECEIVER		DN: HOP230841 Sheet 1 of 1					
						Rev: 03 DO NOT SCALE THIS DOCUMENT	