






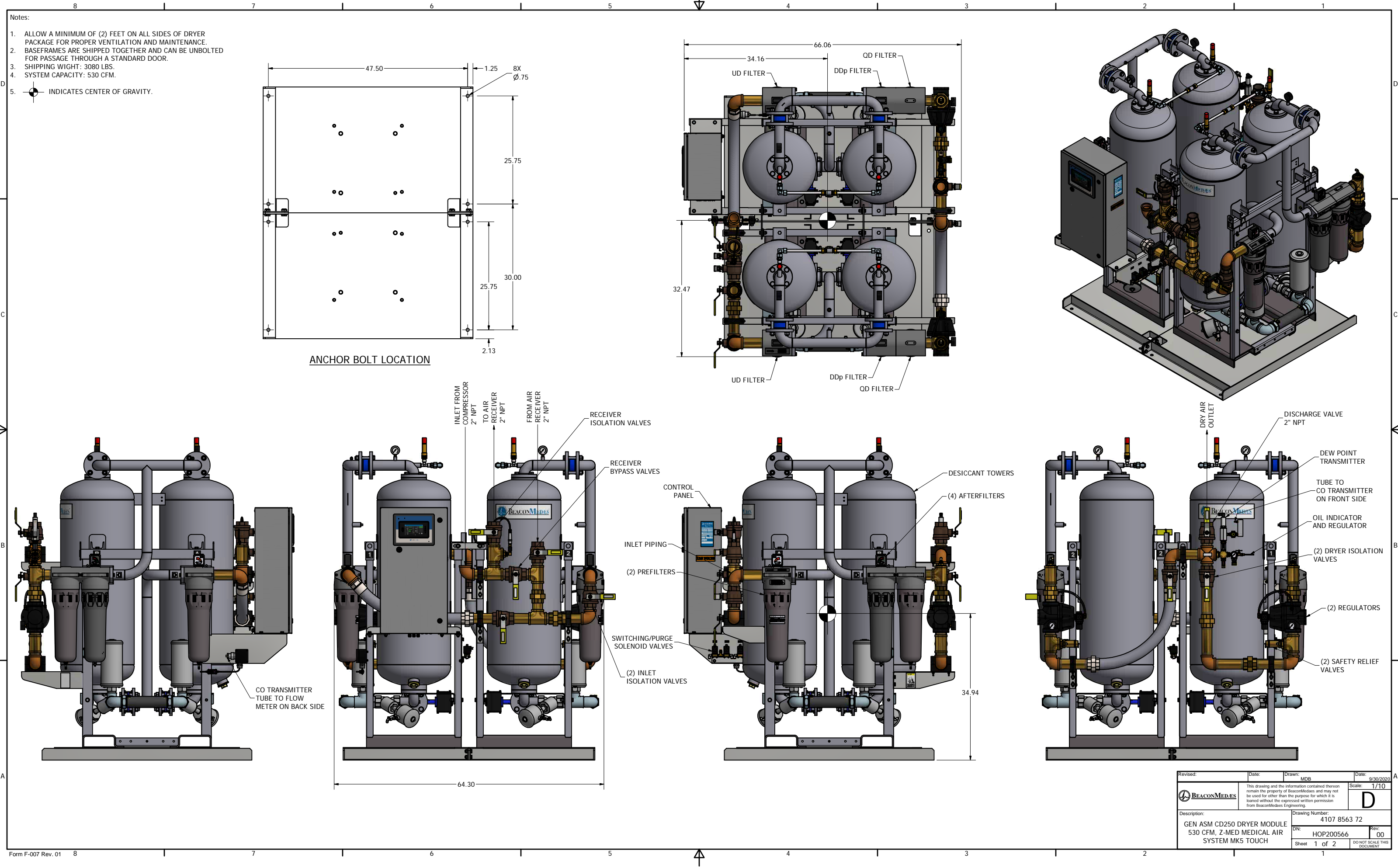
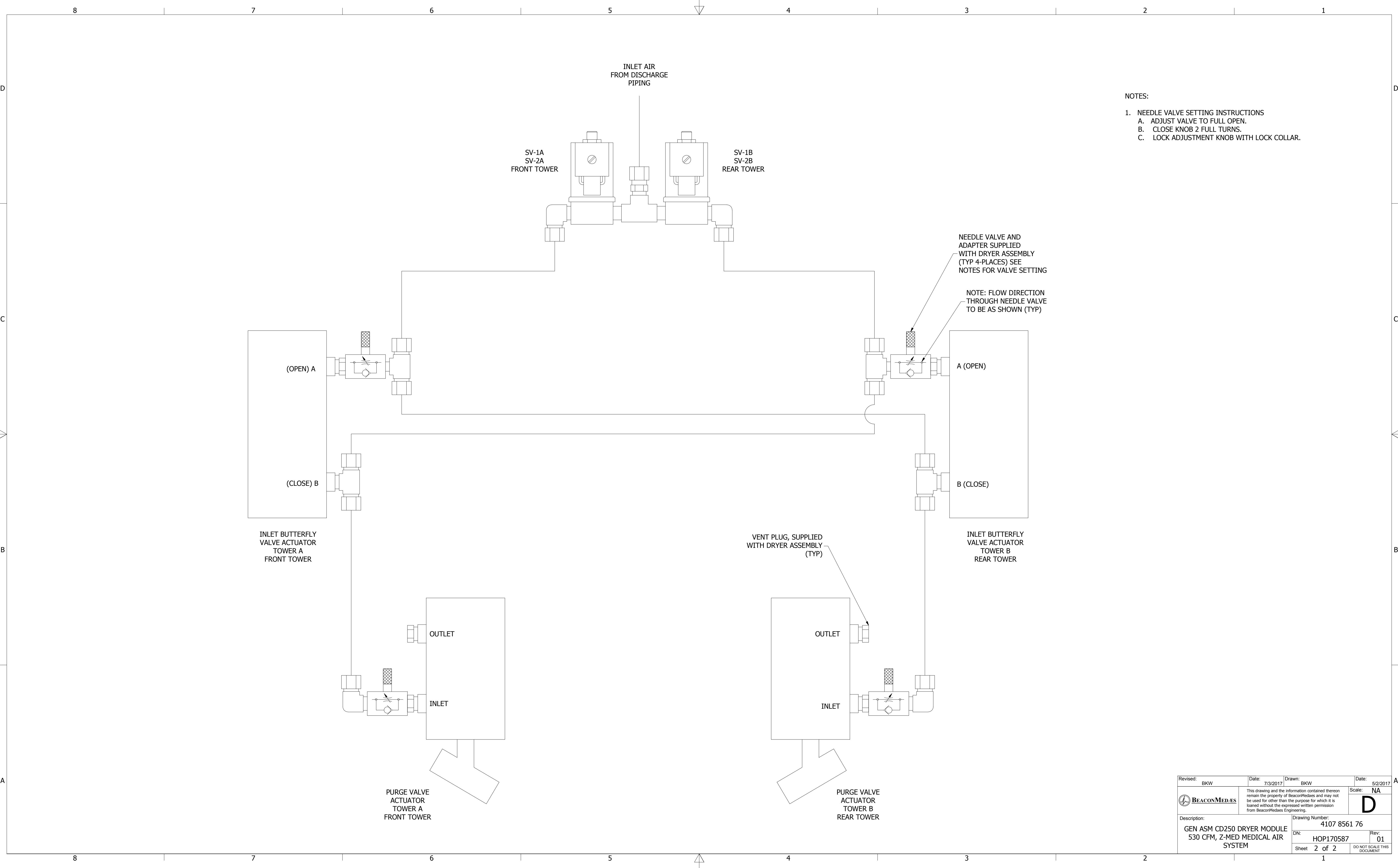


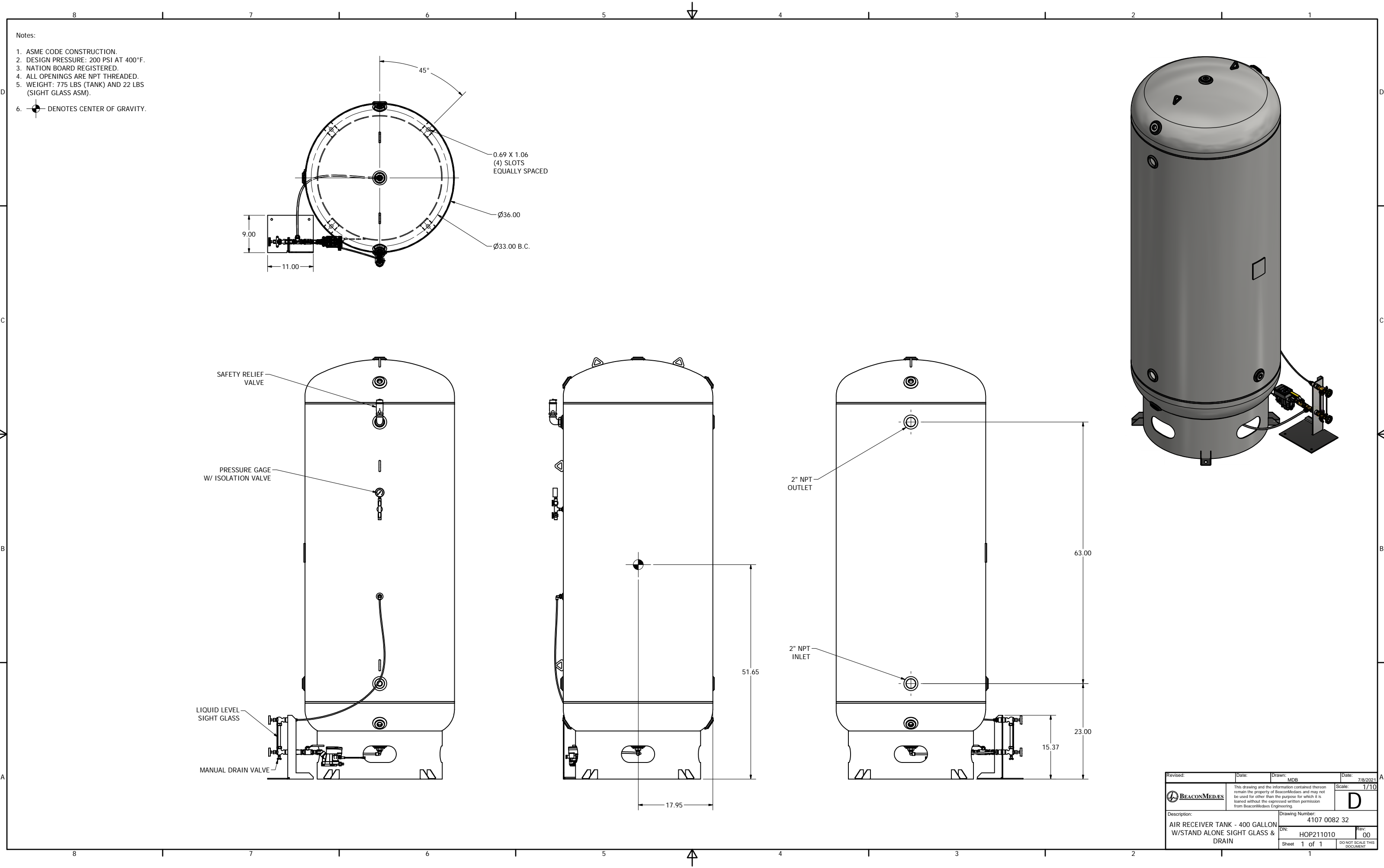
Tolerances, If not indicated, according to:							
ATLAS COPCO STANDARD CLASS							
Name		DIMENS.		ZT30-45 MED		Secrecy Class	
Material		NOT APPLICABLE				1°/2°/ 3	
Treatment:		Not Applicable				INV	
		Scale 1:10		Family		A/ Compare	
		Drawn by saman		Blank nr.		Replaces	
Version Drawn 02.13		Blank wt. 0 Kg		Blank wt. 339,262 Kg		Designation	
STATUS		Des checked.		Prior checked.		Approved.	
Approved		Date 2008-01-09					
							
							
							
							





- NOTES:
- NEEDLE VALVE SETTING INSTRUCTIONS
    - ADJUST VALVE TO FULL OPEN.
    - CLOSE KNOB 2 FULL TURNS.
    - LOCK ADJUSTMENT KNOB WITH LOCK COLLAR.

Revised: BKW	Date: 7/3/2017	Drawn: BKW	Date: 5/2/2017
	This drawing and the information contained therein remain the property of BeaconMedaes and may not be used for other than the purpose for which it is loaned without the expressed written permission from BeaconMedaes Engineering.		Scale: NA
			D
Description: GEN ASM CD250 DRYER MODULE 530 CFM, Z-MED MEDICAL AIR SYSTEM		Drawing Number: 4107 8561 76	
DN: HOP170587		Rev: 01	
Sheet 2 of 2		DO NOT SCALE THIS DOCUMENT	



Revised:	Date:	Drawn: MDB	Date: 7/8/2021
BEACONMEDES	This drawing and the information contained therein remain the property of BeaconMedes and may not be used for other than the purpose for which it is loaned without the expressed written permission from BeaconMedes Engineering.		Scale: 1/10
Description: AIR RECEIVER TANK - 400 GALLON W/STAND ALONE SIGHT GLASS & DRAIN		Drawing Number: 4107 0082 32	
DN: HOP211010		Rev: 00	DO NOT SCALE THIS DOCUMENT
Sheet 1 of 1		1	