



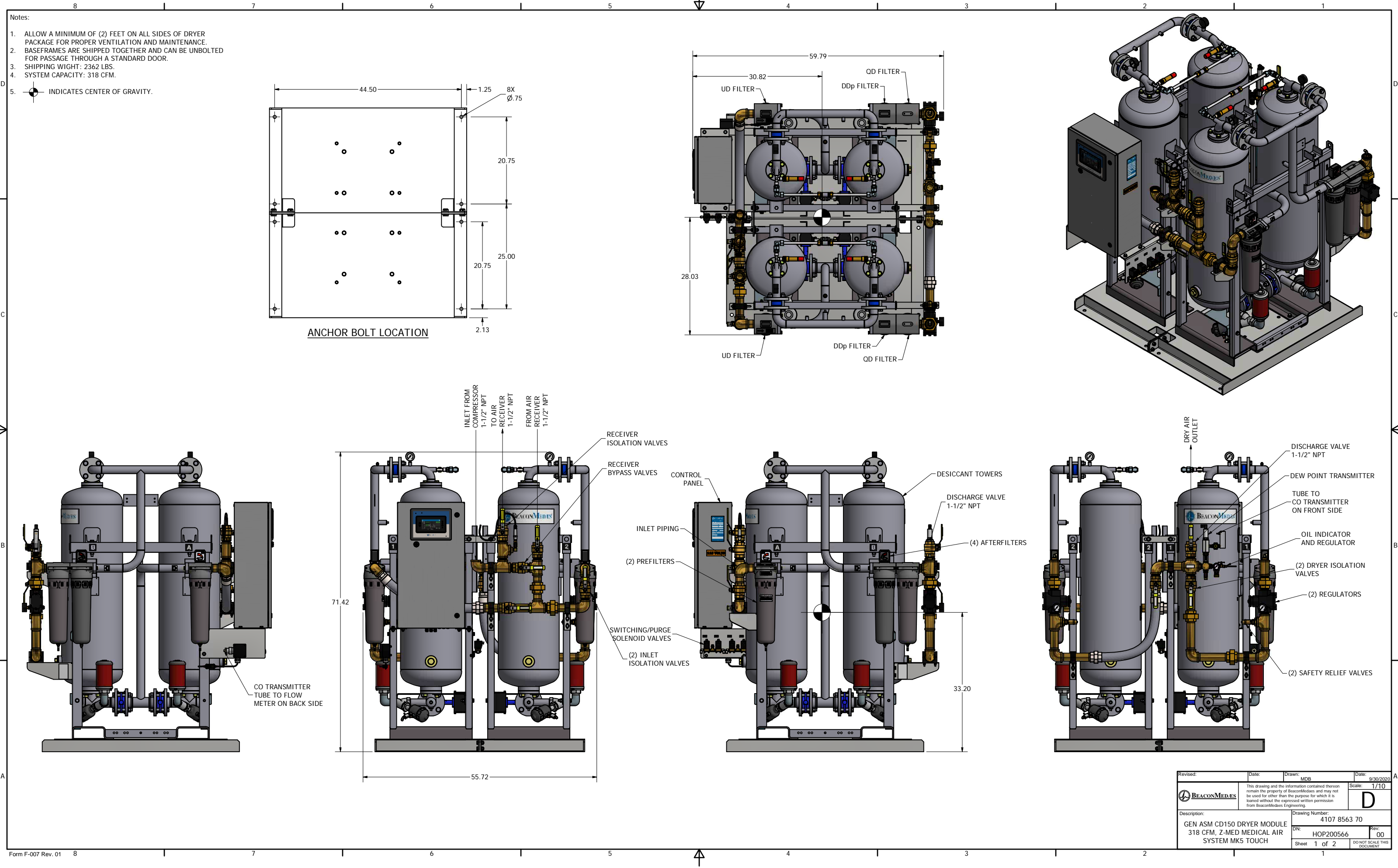
| Approx. mass ± 110 (LBS) | | Center of gravity ± 2 (inch) | |
|------------------------------|------|----------------------------------|------|
| Type | Pack | | Pack |
| ZT15 | 2150 | W | 20.4 |
| ZT18 | 2194 | L | 33.0 |
| ZT22 | 2207 | H | 25.2 |

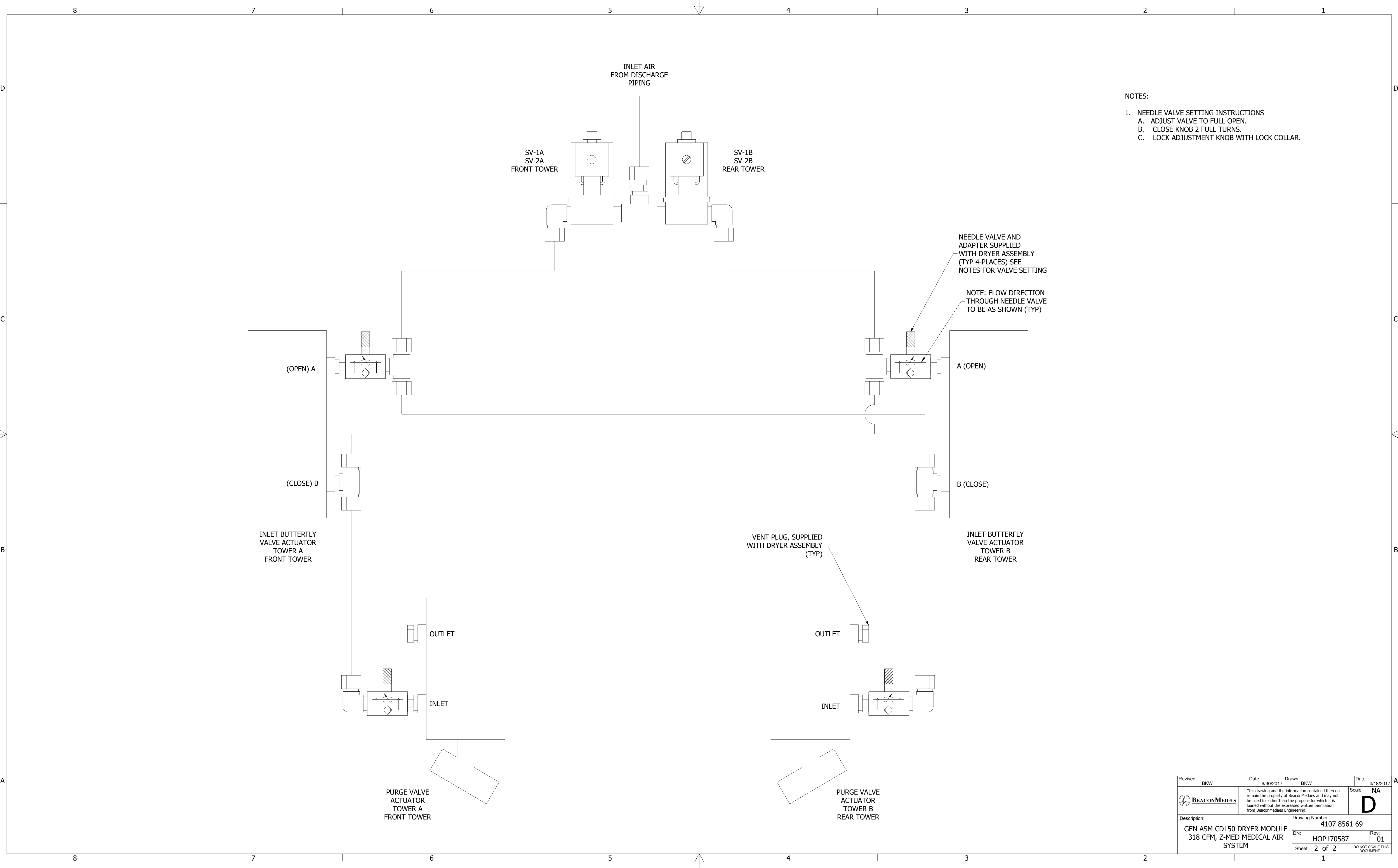
 Note:
* With full open door

All materials supplied are in compliance with the

| | |
|-----------------|----------------|
| 9820576700 | 01.12 |
| Parent 3D model | Ed. Version 3D |

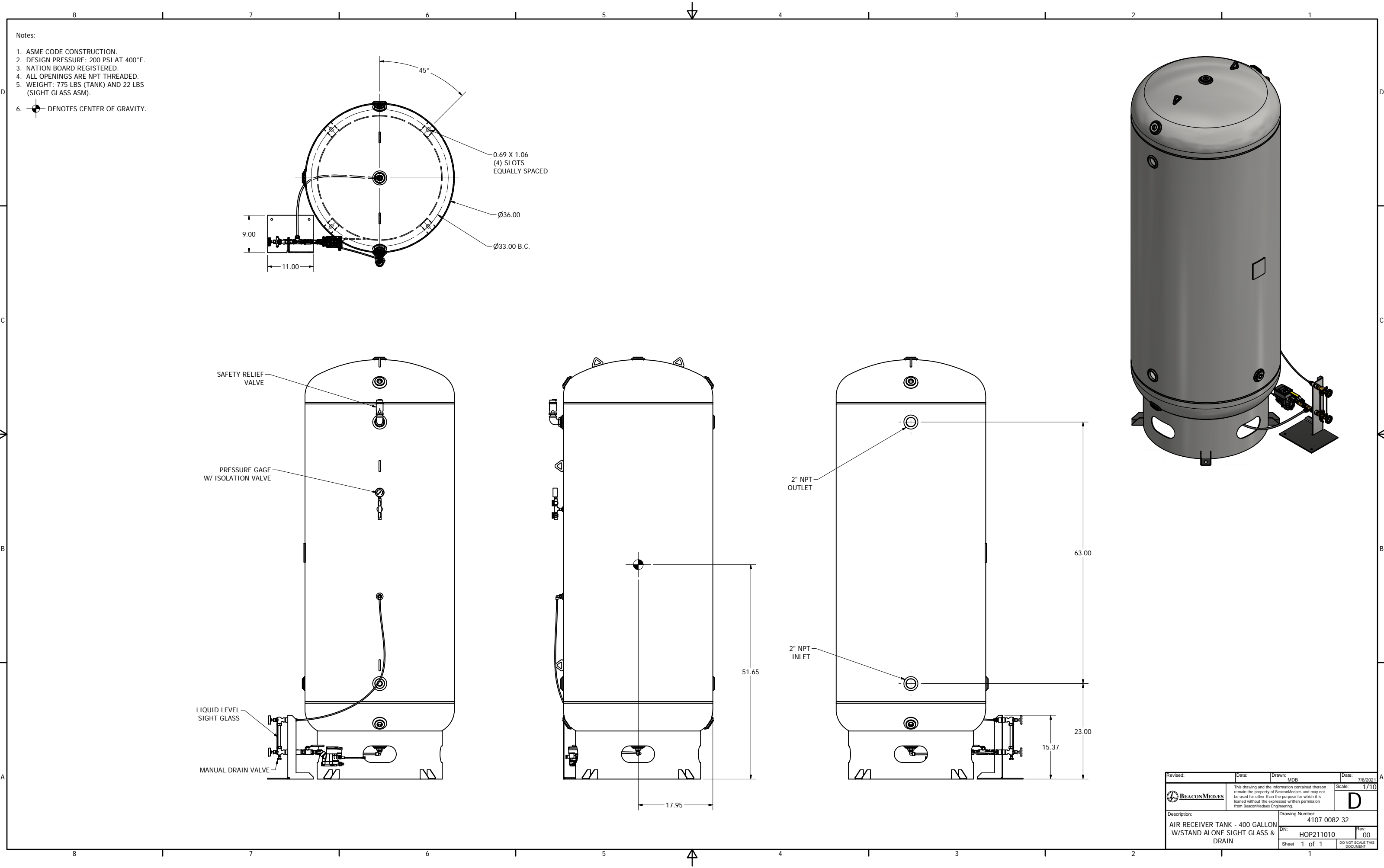
| | | | | | | | | | | | | | | | |
|---|--|----------------|--|---------------|--|------------|-------------|------------|--|-----------------|----------------|---|--|--|--|
| Tolerances, If not indicated, according to | | | | | | | | | | | | | | | |
| ATLAS COPCO STANDARD CLASS | | | | | | | | | | | | | | | |
| Name | | DIMENS. | | | | | ZT15-22 MED | | | Secretary Class | |  | | | |
| Material | | NOT APPLICABLE | | | | | | | | 1/2E K / 3 | | | | | |
| Treatment | | Not Applicable | | | | | | | | INV | |  | | | |
| | | Scale 1:1 to | | Family | | A1 Compose | | | | | Drawing corner | | | | |
|  | | Drawn by | | sraman, v. | | Blank nc | | Replaces | | | All | | | | |
| | | Version Drawn | | 0 kg | | FPH vt. | | 284,217 Kg | | Designation | | | | | |
| STATUS | | 02,11 | | Blank vt. | | Date | | 2008/07/27 | | Sheet | | 1 / 1 | | | |
| Approved | | Des checked, | | Prod checked, | | Approved, | | Date | | 9820576700 | | | | | |
| | | | | | | | | | | | | | | | |





- NOTES:
- NEEDLE VALVE SETTING INSTRUCTIONS
 - ADJUST VALVE TO FULL OPEN.
 - CLOSE KNOB 2 FULL TURNS.
 - LOCK ADJUSTMENT KNOB WITH LOCK COLLAR.

| | | | |
|--|--|---------------------------------|----------------------------|
| Revised: BKW | Date: 6/30/2017 | Drawn: BKW | Date: 4/18/2017 |
| | This drawing and the information contained therein remain the property of BeaconMedaes and may not be used for other than the purpose for which it is loaned without the expressed written permission from BeaconMedaes Engineering. | | Scale: NA |
| | | | D |
| Description: GEN ASM CD150 DRYER MODULE 318 CFM, Z-MED MEDICAL AIR SYSTEM | | Drawing Number: 4107 8561 69 | |
| | | DN: HOP170587 | Rev: 01 |
| | | Sheet 2 of 2 | DO NOT SCALE THIS DOCUMENT |



| | | | |
|---|-------|--|-----------------------|
| Revised: | Date: | Drawn: MDB | Date: 7/8/2021 |
| BEACONMEDES | | This drawing and the information contained therein remain the property of BeaconMedes and may not be used for other than the purpose for which it is loaned without the expressed written permission from BeaconMedes Engineering. | |
| Description: AIR RECEIVER TANK - 400 GALLON W/STAND ALONE SIGHT GLASS & DRAIN | | Drawing Number: 4107 0082 32 | Scale: 1/10 |
| DN: HOP211010 | | Rev: 00 | Sheet 1 of 1 |
| | | DO NOT SCALE THIS DOCUMENT | |