

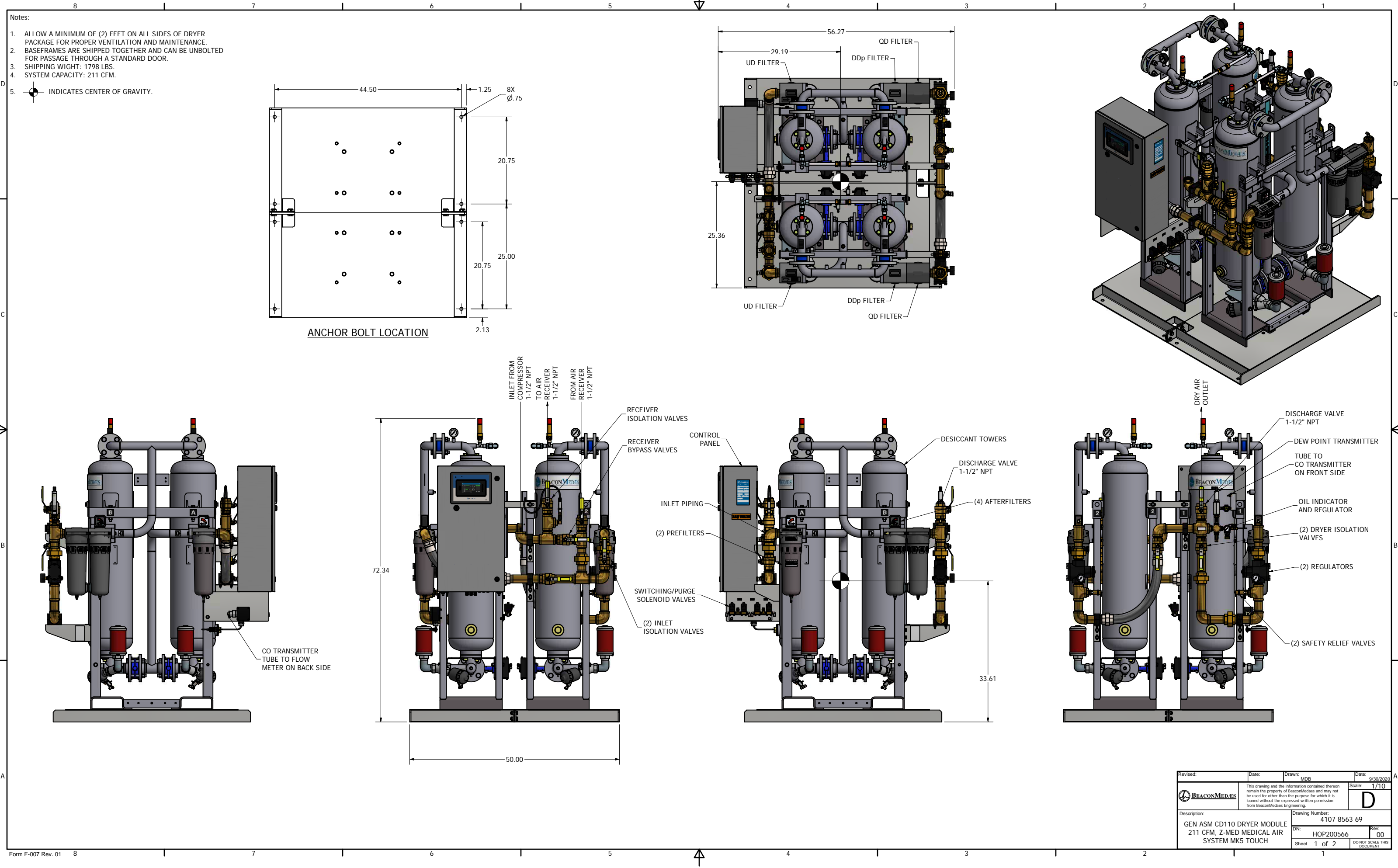
Approx. mass ± 110 (LBS)		Center of gravity ± 2 (inch)	
Type	Pack		Pack
ZT15	2150	W	20.4
ZT18	2194	L	33.0
ZT22	2207	H	25.2

 Note:
* With full open door

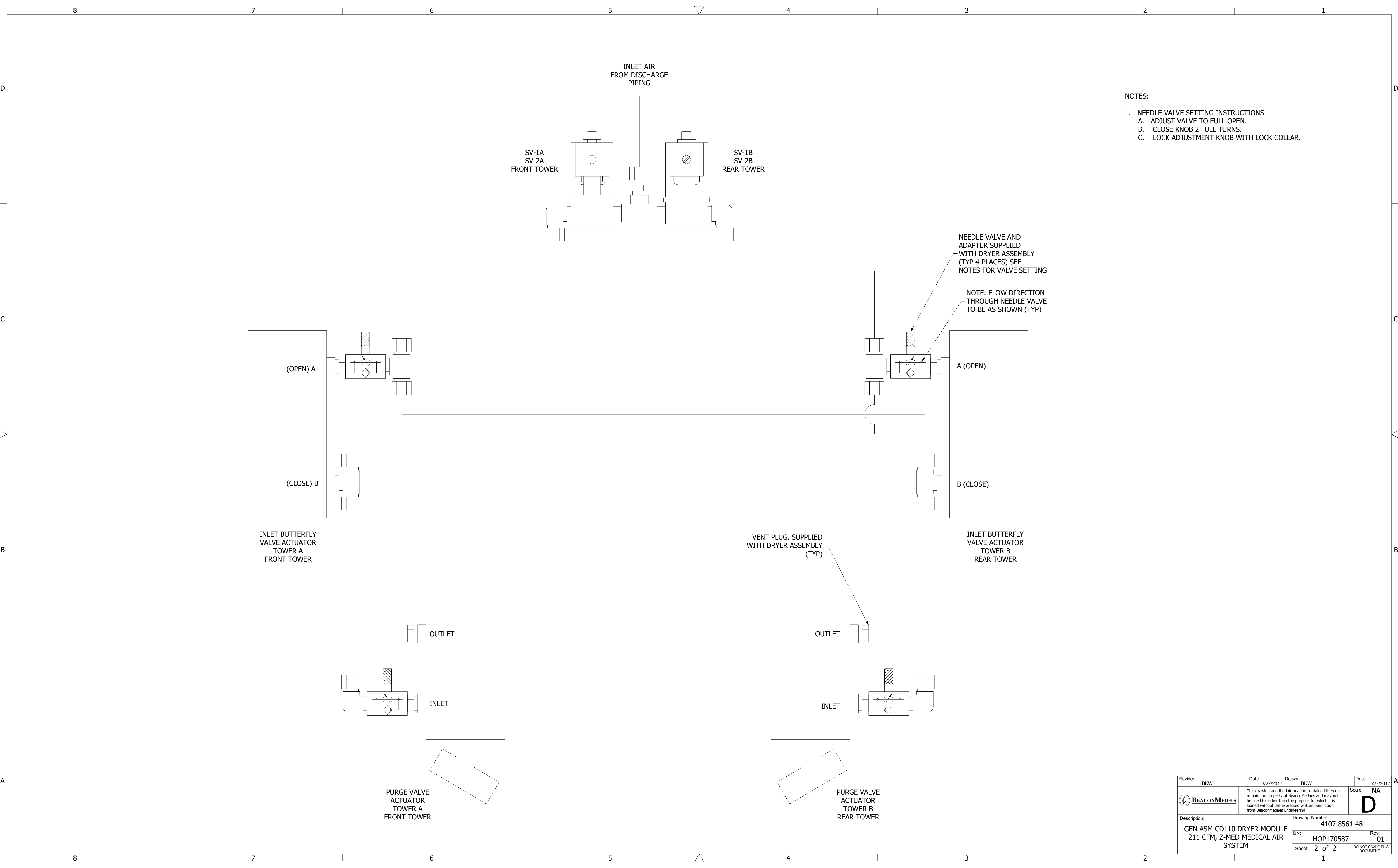
All materials supplied are in compliance with the

9820576700	01.12
Parent 3D model	Ed. Version 3D

Tolerances, If not Indicated, according to															
ATLAS COPCO STANDARD CLASS															
Name		DIMENS.						ZT15-22 MED		Security Class 1/2E/ 3					
Material		NOT APPLICABLE													
Treatment		Not Applicable										INV			
		Scale 1:10		Family		A1		Compare				Drawing corner			
		Drawn by sraman ,		Blank nc				Replaces				All			
STATUS		Version Dwg 02,11		Blank vlt,		0 Kg		Ftbl vlt,		284,217 Kg		Designation			
Approved		Dis checked,		Prod checked,		Approved,		Date 2008/07/17				Sheet 1 / 1			
												9820576700			




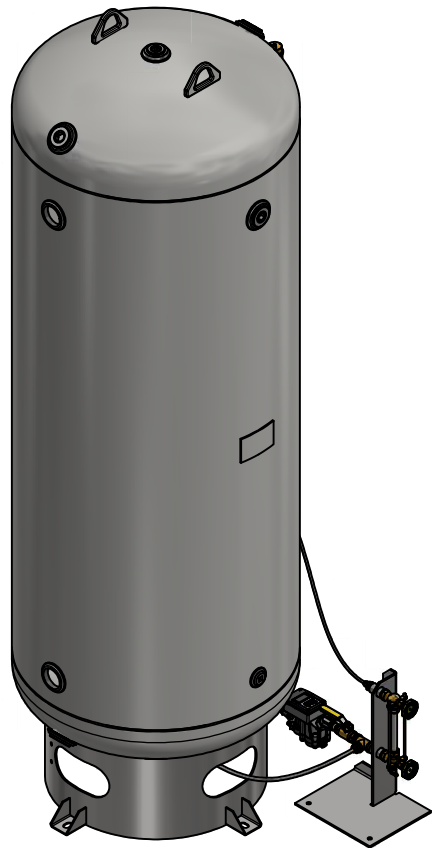
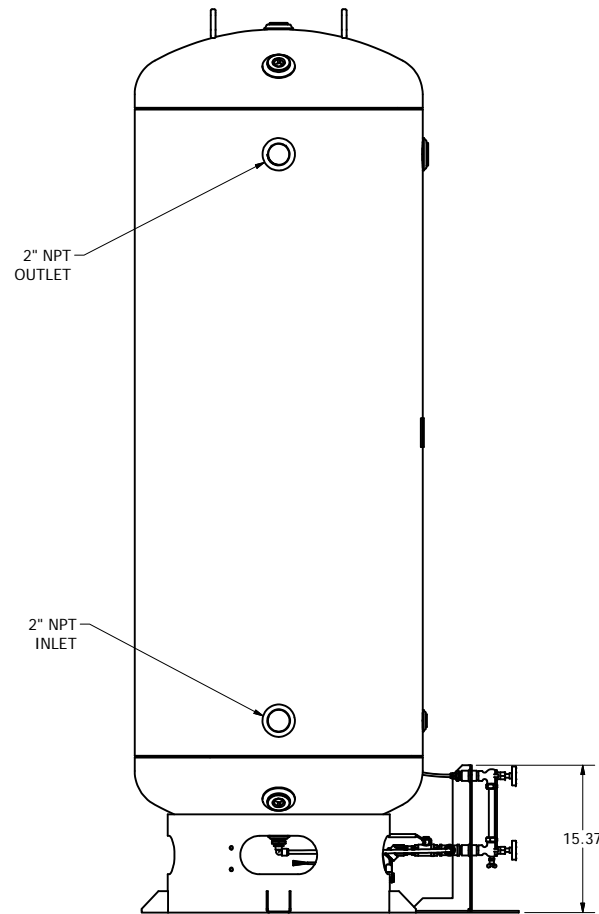
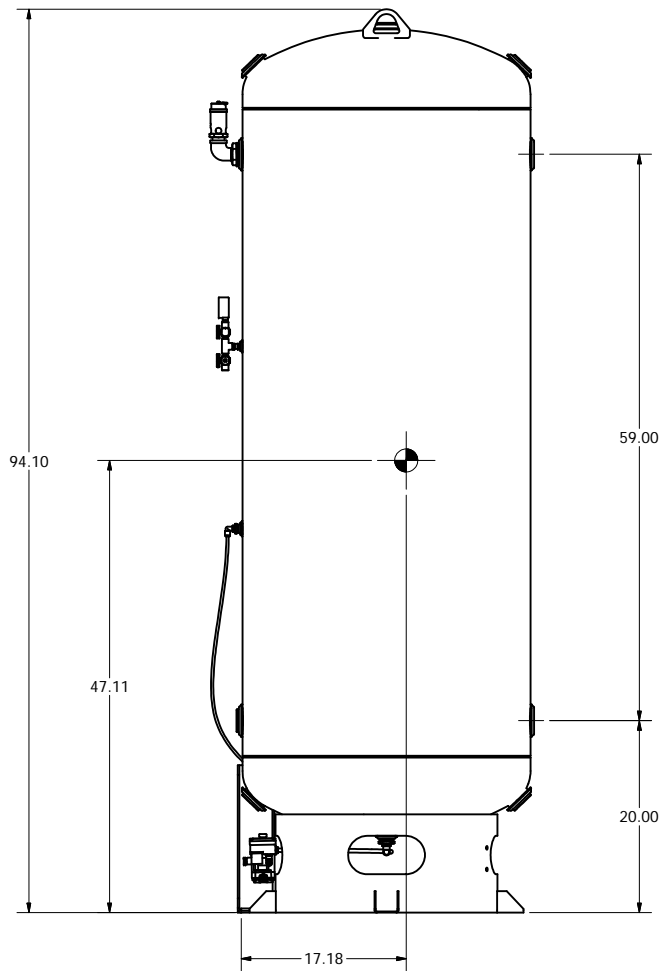
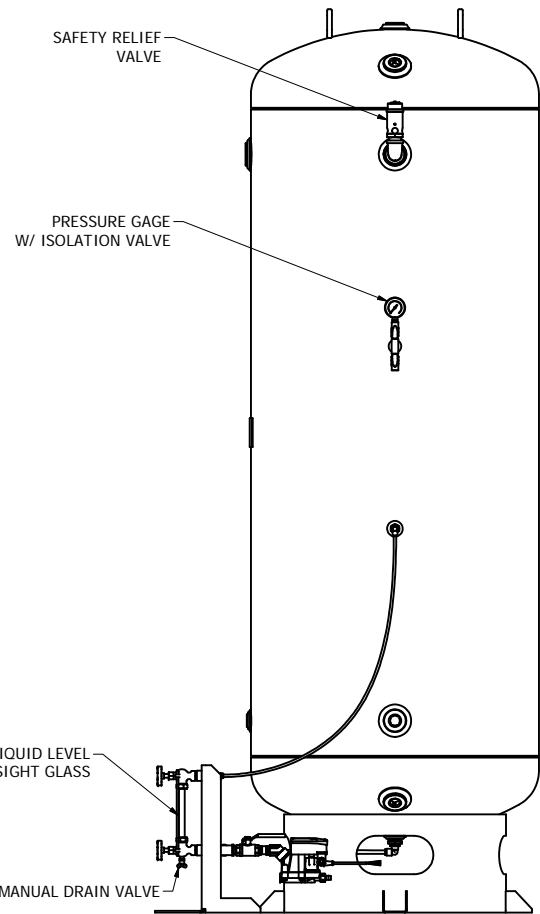
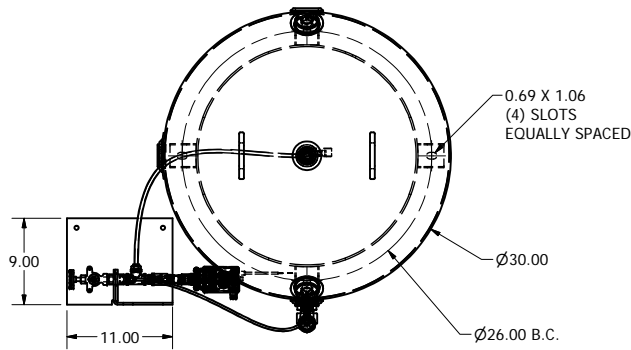
Revised:	Date:	Drawn: MDB	Date: 9/30/2020
This drawing and the information contained therein remain the property of BeaconMedaes and may not be used for other than the purpose for which it is loaned without the expressed written permission from BeaconMedaes Engineering.		Scale: 1/10	D
Description: GEN ASM CD110 DRYER MODULE 211 CFM, Z-MED MEDICAL AIR SYSTEM MK5 TOUCH		Drawing Number: 4107 8563 69 DN: HOP200566 Rev: 00 Sheet 1 of 2 DO NOT SCALE THIS DOCUMENT	




- NOTES:
- NEEDLE VALVE SETTING INSTRUCTIONS
 - ADJUST VALVE TO FULL OPEN.
 - CLOSE KNOB 2 FULL TURNS.
 - LOCK ADJUSTMENT KNOB WITH LOCK COLLAR.

Revised: BKW	Date: 6/27/2017	Drawn: BKW	Date: 4/7/2017
	This drawing and the information contained therein remain the property of BeaconMedaes and may not be used for other than the purpose for which it is loaned without the expressed written permission from BeaconMedaes Engineering.		Scale: NA
			D
Description: GEN ASM CD110 DRYER MODULE 211 CFM, Z-MED MEDICAL AIR SYSTEM		Drawing Number: 4107 8561 48	
DN: HOP170587		Rev: 01	
Sheet 2 of 2		DO NOT SCALE THIS DOCUMENT	

- Notes:
1. ASME CODE CONSTRUCTION.
 2. DESIGN PRESSURE: 200 PSI AT 400°F.
 3. NATION BOARD REGISTERED.
 4. ALL OPENINGS ARE NPT THREADED.
 5. WEIGHT: 520 LBS (TANK) AND 22 LBS (SIGHT GLASS ASM).
 6.  DENOTES CENTER OF GRAVITY.



Revised:	Date:	Drawn: MDB	Date: 7/8/2021
 BEACONMEDES	This drawing and the information contained therein remain the property of BeaconMedes and may not be used for other than the purpose for which it is loaned without the expressed written permission from BeaconMedes Engineering.		Scale: 1/10
Description: AIR RECEIVER TANK - 240 GALLON W/STAND ALONE SIGHT GLASS & DRAIN		Drawing Number: 4107 0082 31	
Sheet 1 of 1		DN: HOP211010	Rev: 00
		DO NOT SCALE THIS DOCUMENT	