


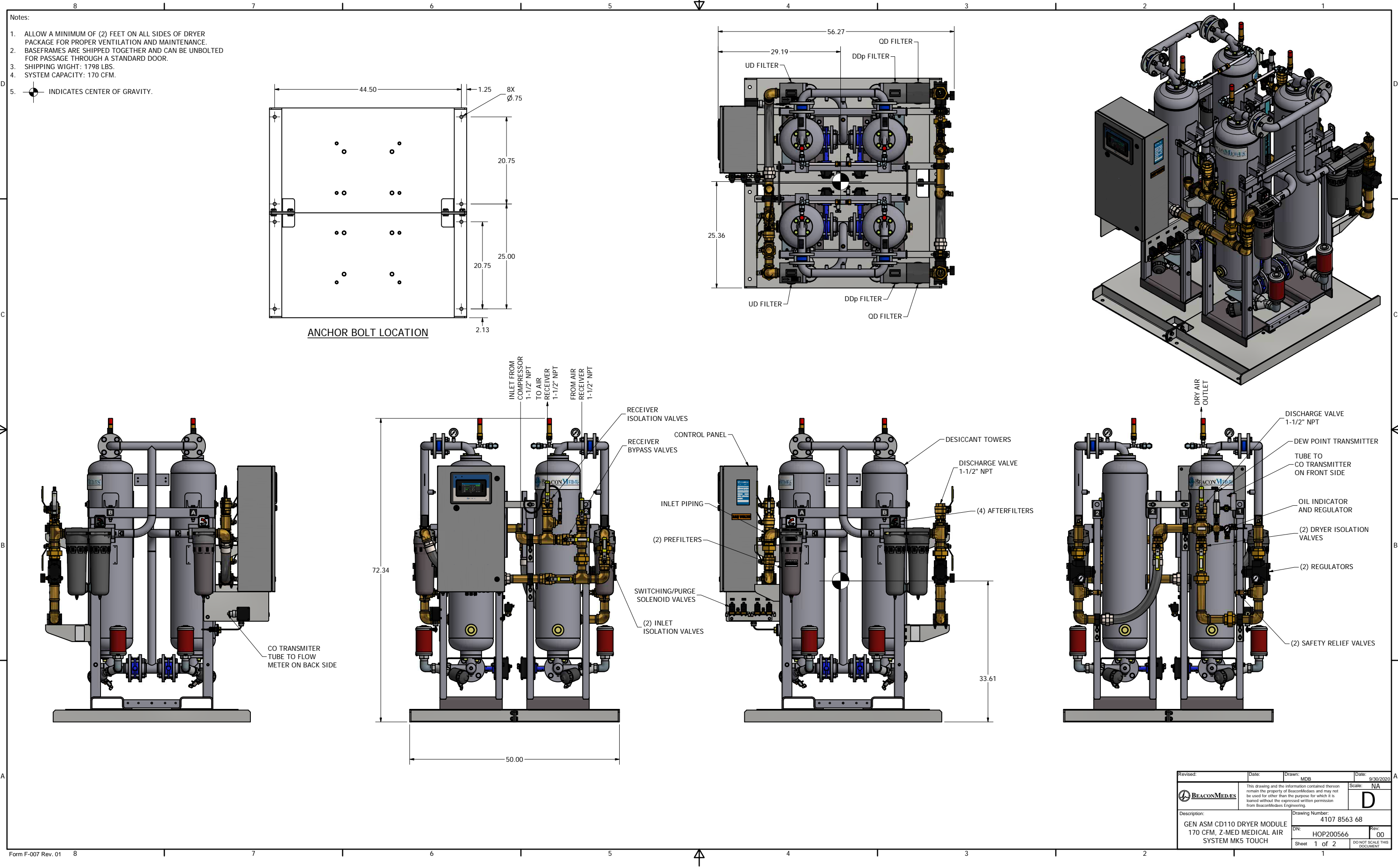
Approx. mass ± 110 (LBS)		Center of gravity ± 2 (inch)	
Type	Pack		Pack
ZT15	2150	W	20.4
ZT18	2194	L	33.0
ZT22	2207	H	25.2

 **Note:**
* With full open door

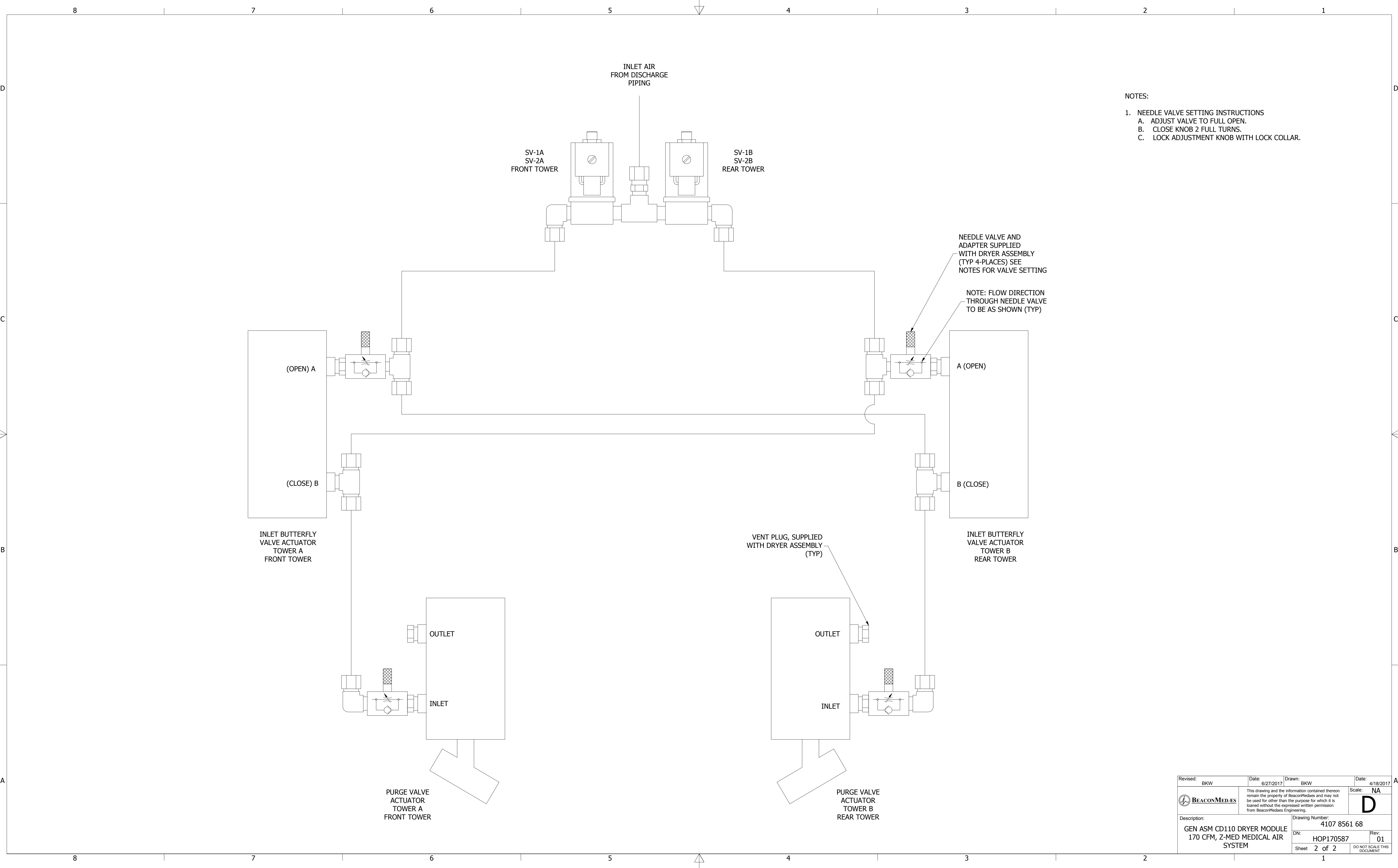
All materials supplied are in compliance with the

9820576700	01.12
Parent 3D model	Ed. Version 3D

Tolerances, If not Indicated, according to													
ATLAS COPCO STANDARD CLASS													
Name		DIMENS.						ZT15-22 MED		Security Class			
Material		NOT APPLICABLE								1/2E/ 3			
Treatment		Not Applicable								INV			
		Scale 1:10		Family		A1		Compare				Drawing owner	
Drawn by sraman ,		Blank nc						Replaces				All	
Version Dwg 02,11		Blank vlt,		0 Kg		Ftbl vlt,		284,217 Kg		Designation		Sheet 1 / 1	
STATUS		Des checked,		Prod checked,		Approved,		Date 2008/07/27		9820576700			
APPROVED													

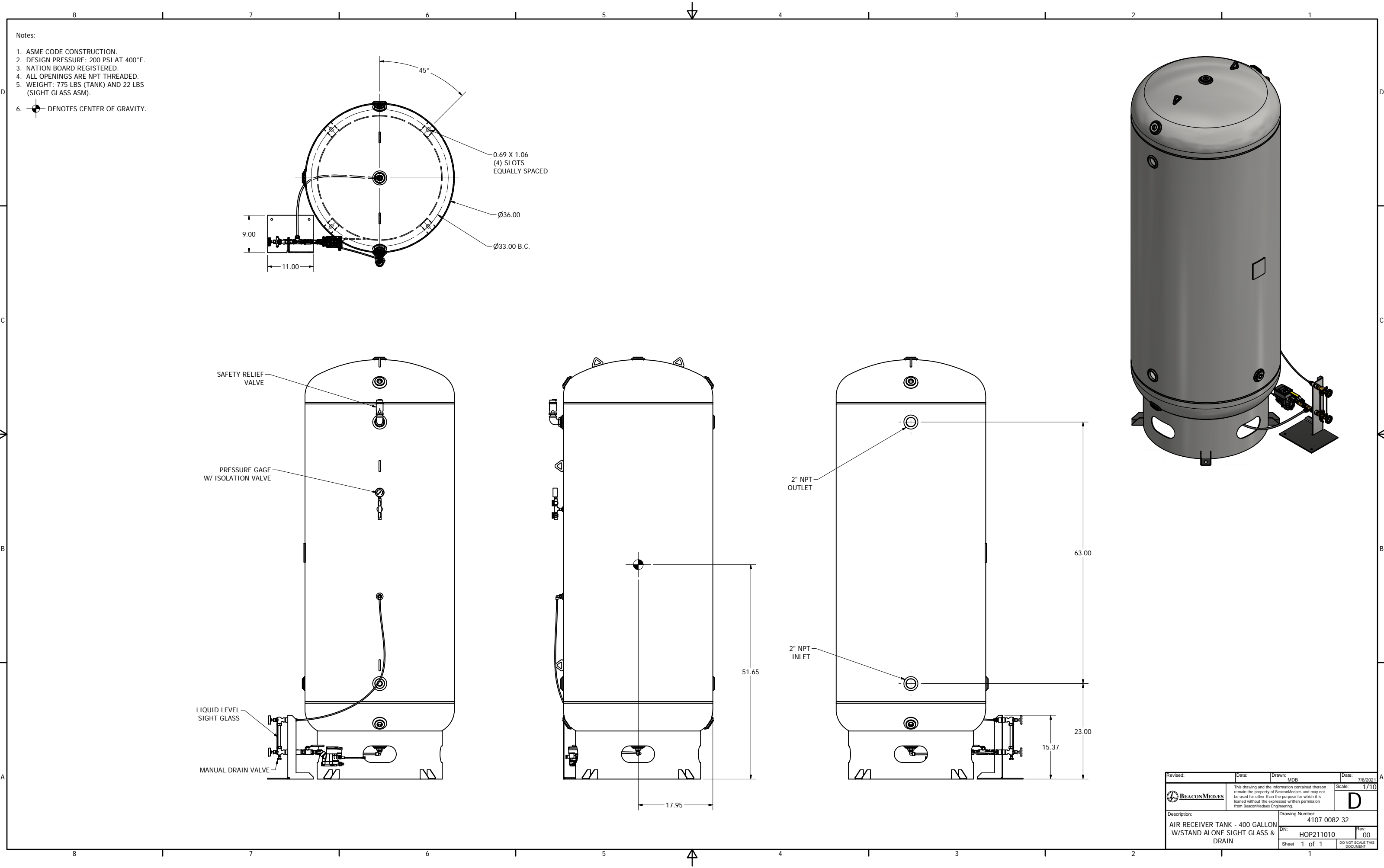


Revised:	Date:	Drawn: MDB	Date: 9/30/2020
This drawing and the information contained therein remain the property of BeaconMedaes and may not be used for other than the purpose for which it is loaned without the expressed written permission from BeaconMedaes Engineering.		Scale: NA	D
Description: GEN ASM CD110 DRYER MODULE 170 CFM, Z-MED MEDICAL AIR SYSTEM MK5 TOUCH		Drawing Number: 4107 8563 68	
DN: HOP200566		Rev: 00	
Sheet 1 of 2		DO NOT SCALE THIS DOCUMENT	



- NOTES:
- NEEDLE VALVE SETTING INSTRUCTIONS
 - ADJUST VALVE TO FULL OPEN.
 - CLOSE KNOB 2 FULL TURNS.
 - LOCK ADJUSTMENT KNOB WITH LOCK COLLAR.

Revised: BKW	Date: 6/27/2017	Drawn: BKW	Date: 4/18/2017
	This drawing and the information contained therein remain the property of BeaconMedaes and may not be used for other than the purpose for which it is loaned without the expressed written permission from BeaconMedaes Engineering.		Scale: NA
			D
Description: GEN ASM CD110 DRYER MODULE 170 CFM, Z-MED MEDICAL AIR SYSTEM		Drawing Number: 4107 8561 68	
DN: HOP170587		Rev: 01	
Sheet 2 of 2		DO NOT SCALE THIS DOCUMENT	



Revised:	Date:	Drawn: MDB	Date: 7/8/2021
This drawing and the information contained therein remain the property of BeaconMedaes and may not be used for other than the purpose for which it is loaned without the expressed written permission from BeaconMedaes Engineering.		Scale: 1/10	
Description: AIR RECEIVER TANK - 400 GALLON W/STAND ALONE SIGHT GLASS & DRAIN		Drawing Number: 4107 0082 32	
DN: HOP211010		Rev: 00	
Sheet 1 of 1		DO NOT SCALE THIS DOCUMENT	