

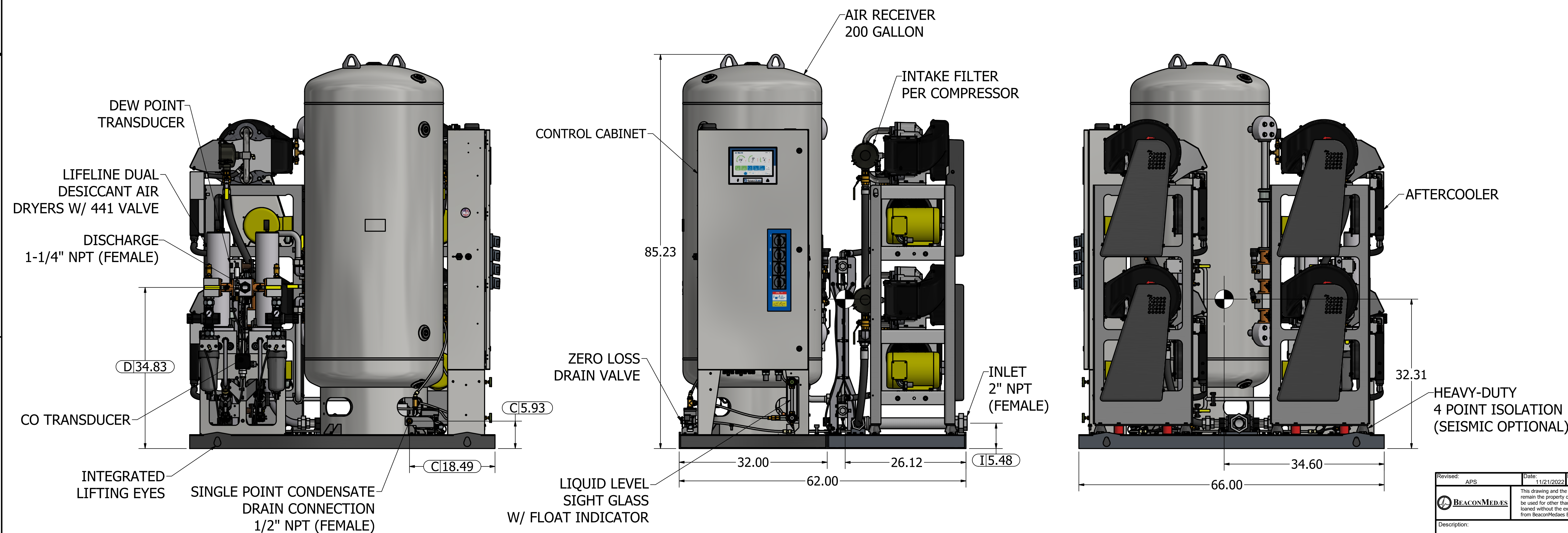
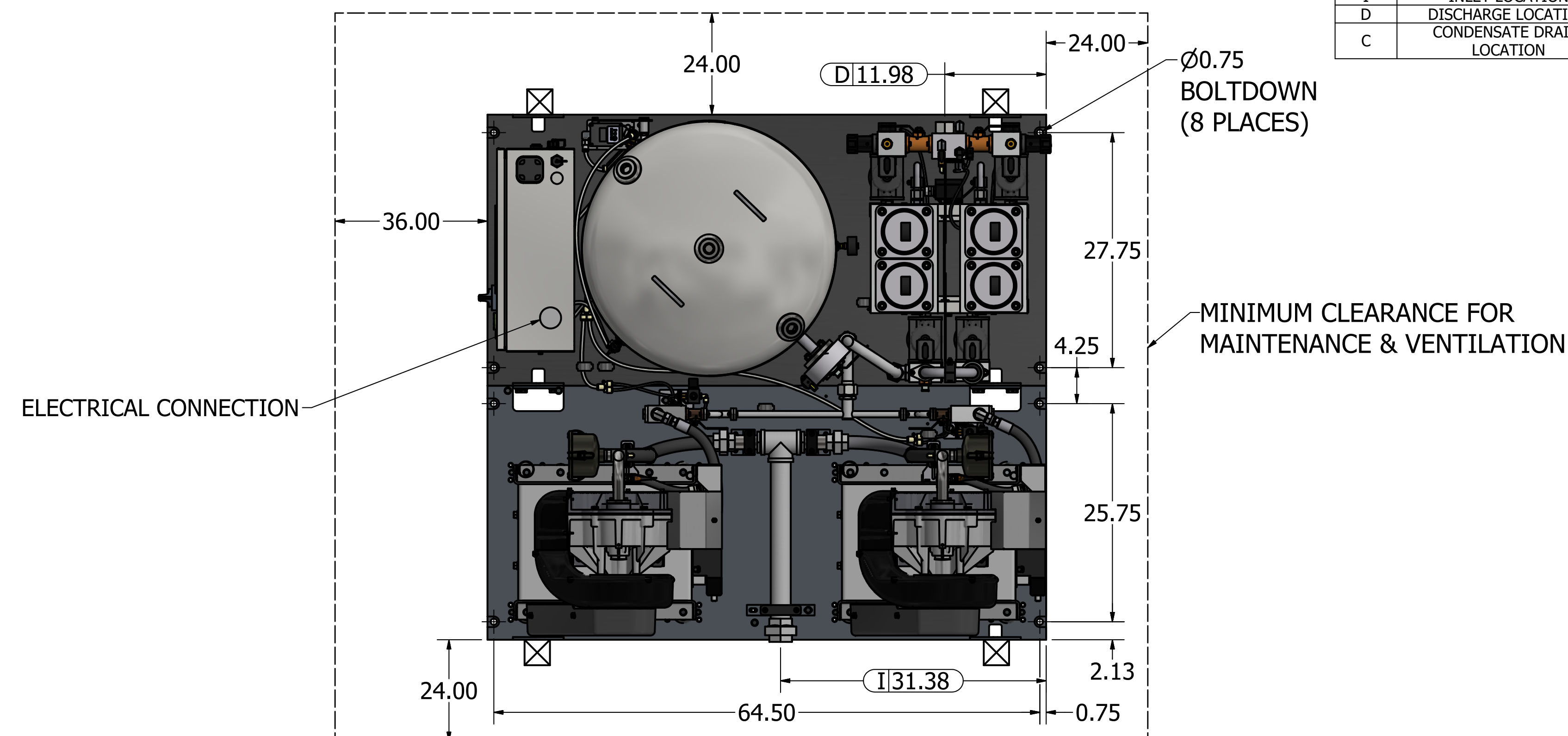




Notes:

1. INLET AND DISCHARGE CONNECTIONS HAVE INTEGRATED FLEX HOSE DESIGN.
2. SYSTEM WEIGHT: 2563 LBS
3.  INDICATES LIFTING POINTS
4.  DENOTES CENTER OF GRAVITY

SYSTEM CONNECTIONS	
ID	DESCRIPTION
I	INLET LOCATION
D	DISCHARGE LOCATION
C	CONDENSATE DRAIN LOCATION



Revised:	APS	Date:	11/21/2022	Drawn:	JDY	Date:	11/11/2022
 BEACONMEDAS		This drawing and the information contained therein remain the property of BeaconMedas and may not be used for other than the purpose for which it is loaned without the expressed written permission from BeaconMedas Engineering.				Scale:	
Description:		Part Number:		4107 8511 56			
GENERAL ASM - LL QX SCROLL AIR SPC 7.5HP NPPA W/ DESC DRYER				DN: HOP220663 Sheet 1 of 1		Rev:	04/21/2022
				DO NOT SCALE THIS DRAWING			