

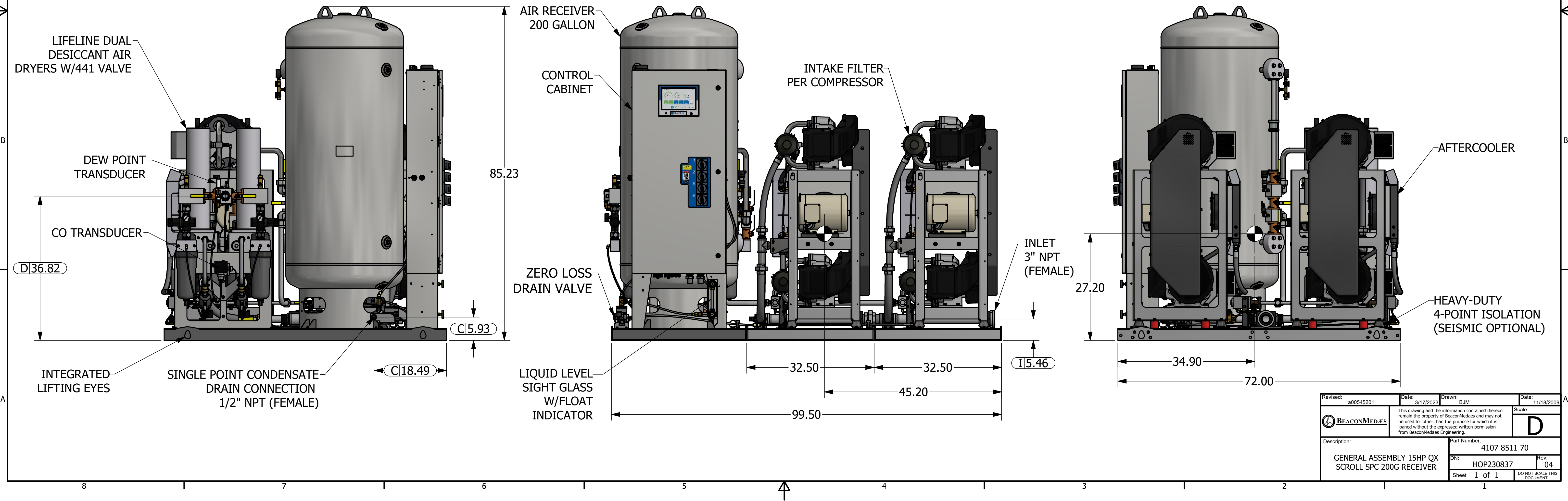
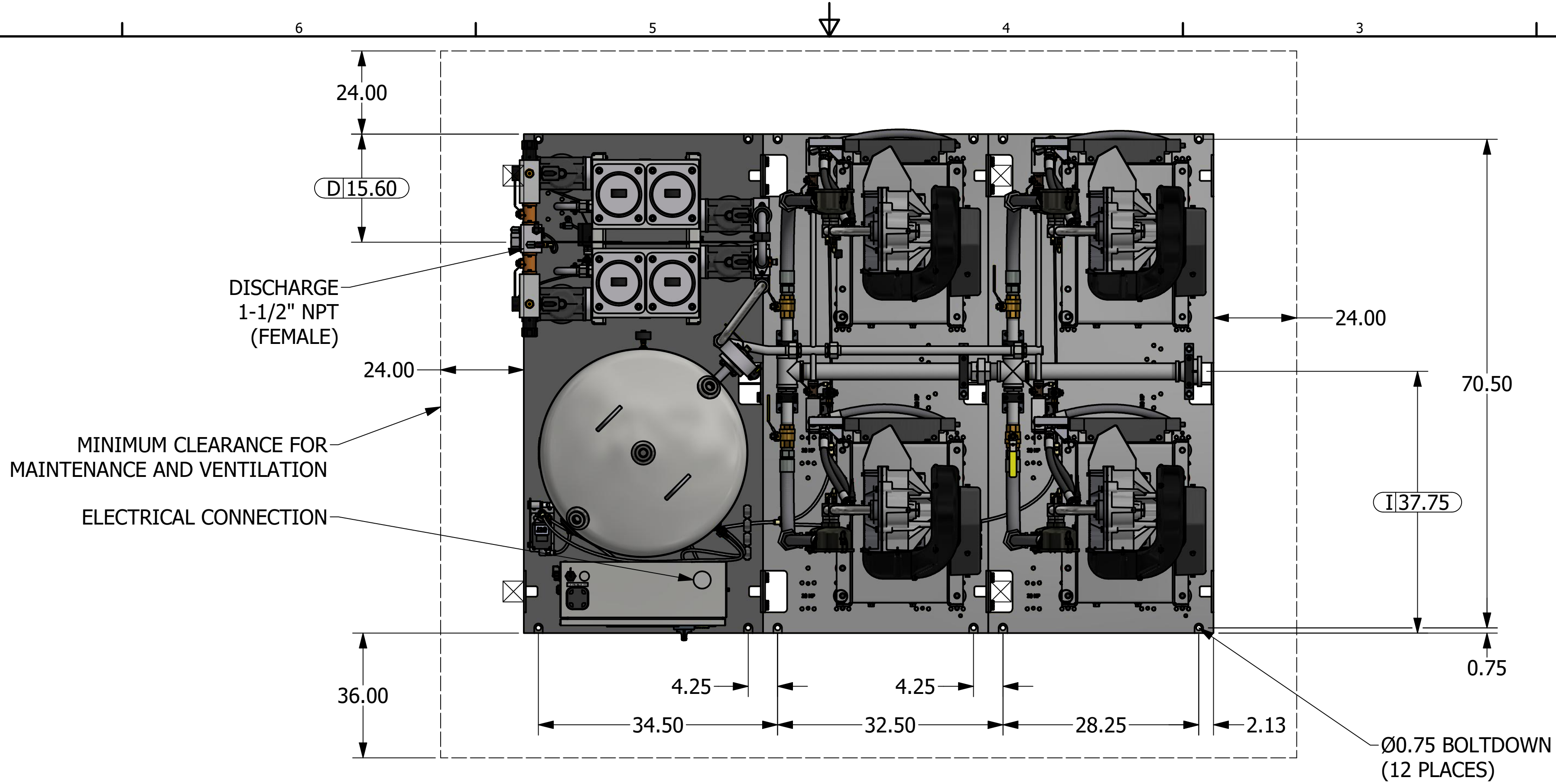



- Notes:
1. INLET AND DISCHARGE CONNECTIONS HAVE INTEGRATED FLEX HOSE DESIGN.
  2. SYSTEM WEIGHT: 3910 LBS.
  3.  INDICATES LIFTING POINTS.
  4.  DENOTES CENTER OF GRAVITY.

SYSTEM CONNECTIONS	
ID	DESCRIPTION
C	CONDENSATE DRAIN LOCATION
I	INLET LOCATION
D	DISCHARGE LOCATION



Revised: a00545201	Date: 3/17/2023	Drawn: BJM	Date: 11/18/2009
		This drawing and the information contained therein remain the property of BeaconMedaes and may not be used for other than the purpose for which it is loaned without the expressed written permission from BeaconMedaes Engineering.	
Description: GENERAL ASSEMBLY 15HP QX SCROLL SPC 200G RECEIVER		Part Number: 4107 8511 70	
Sheet 1 of 1		Rev: 04	