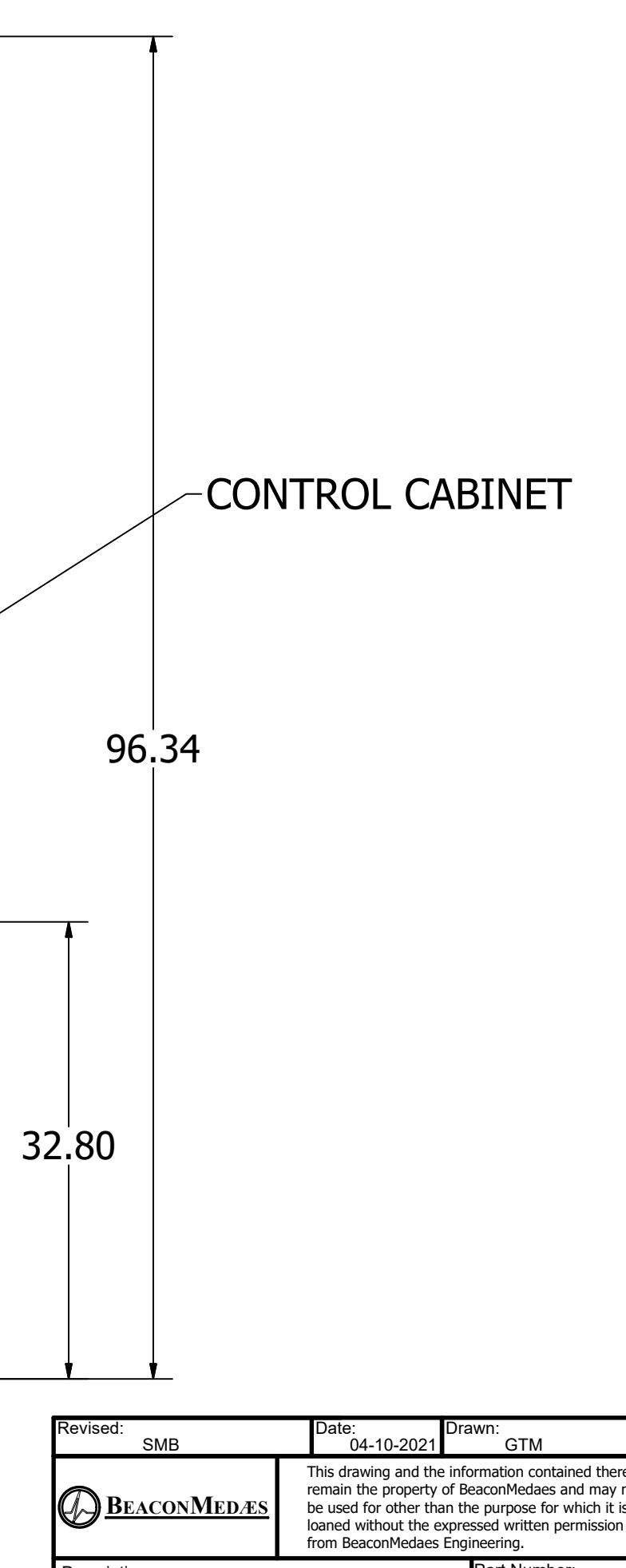
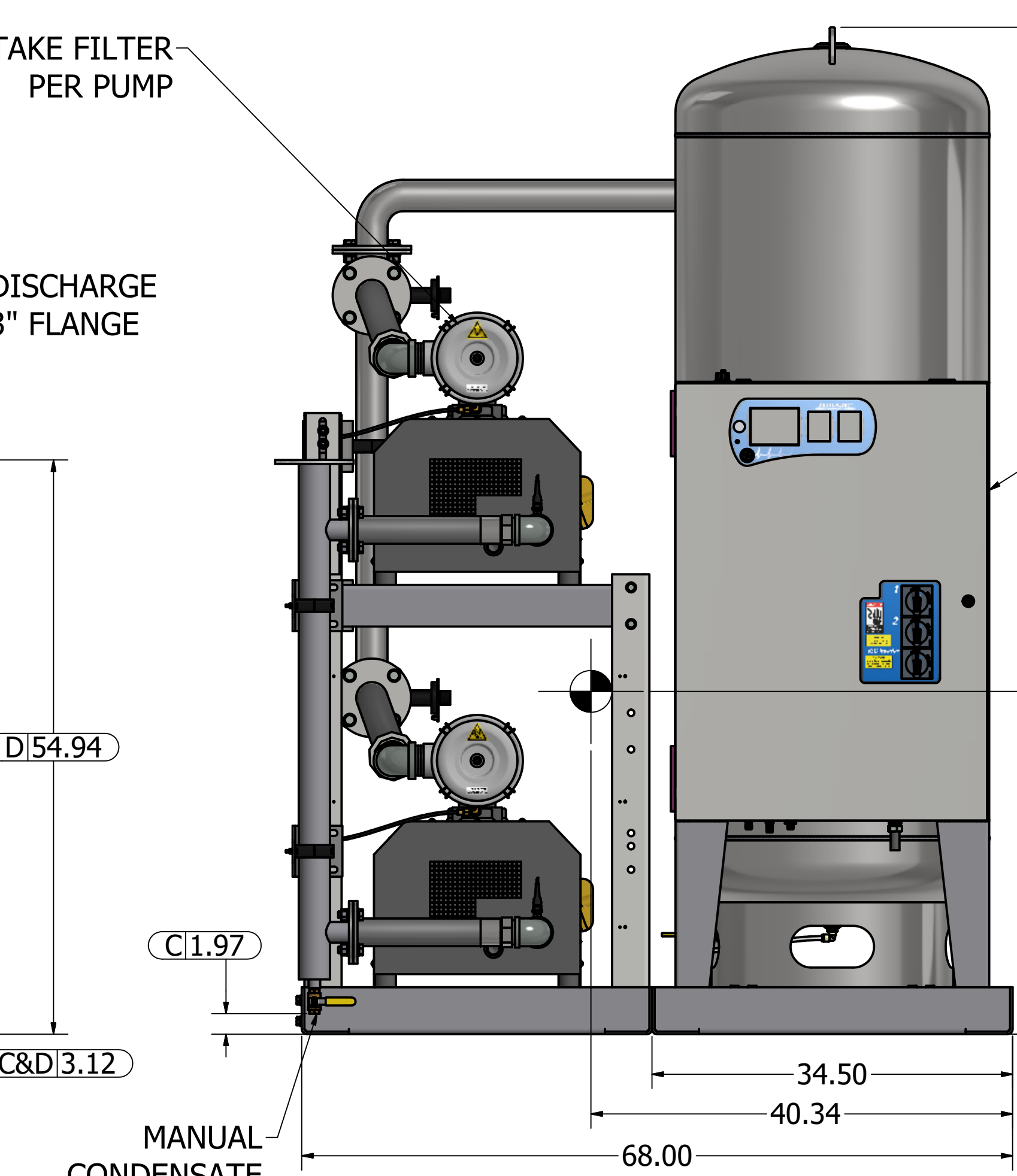
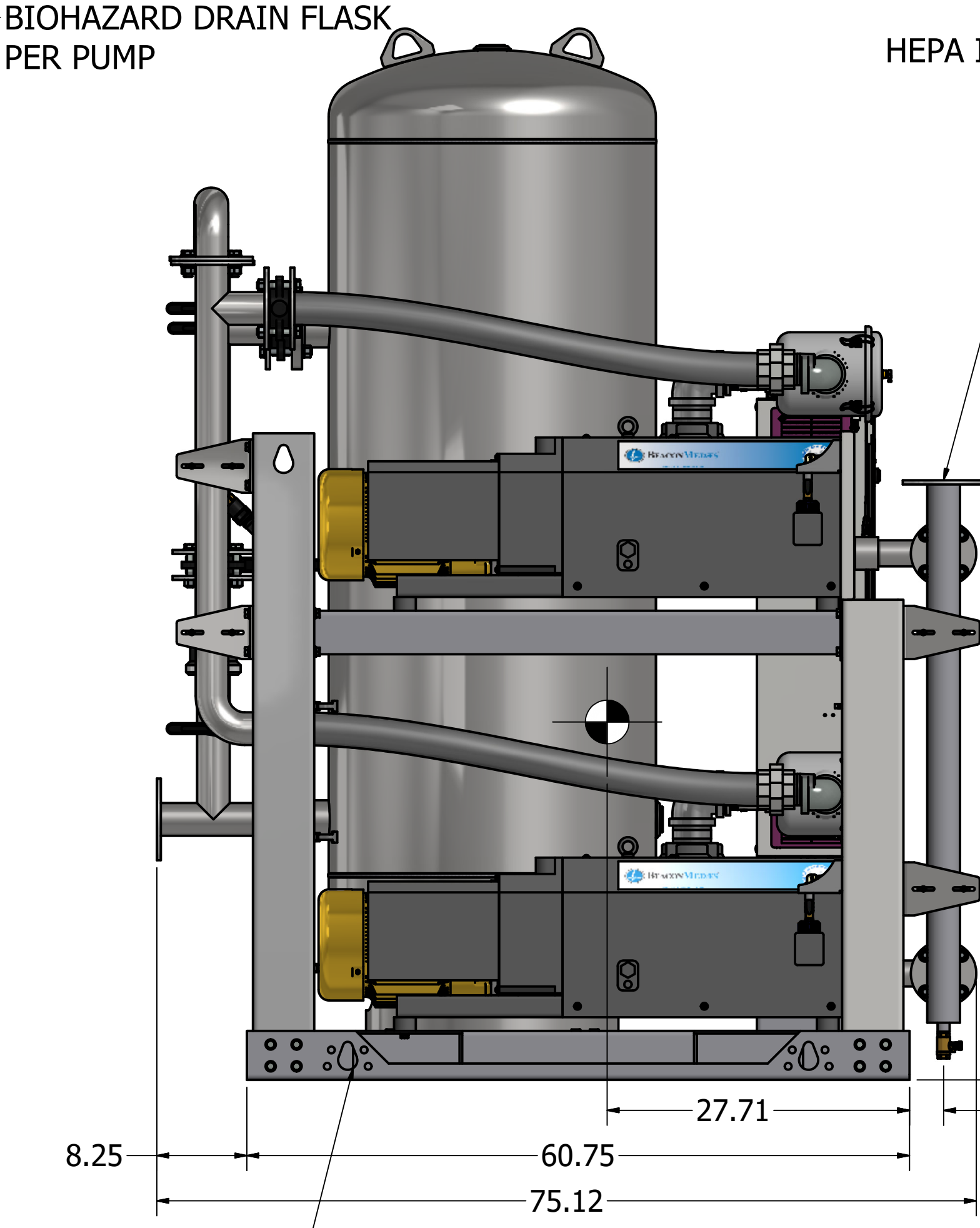
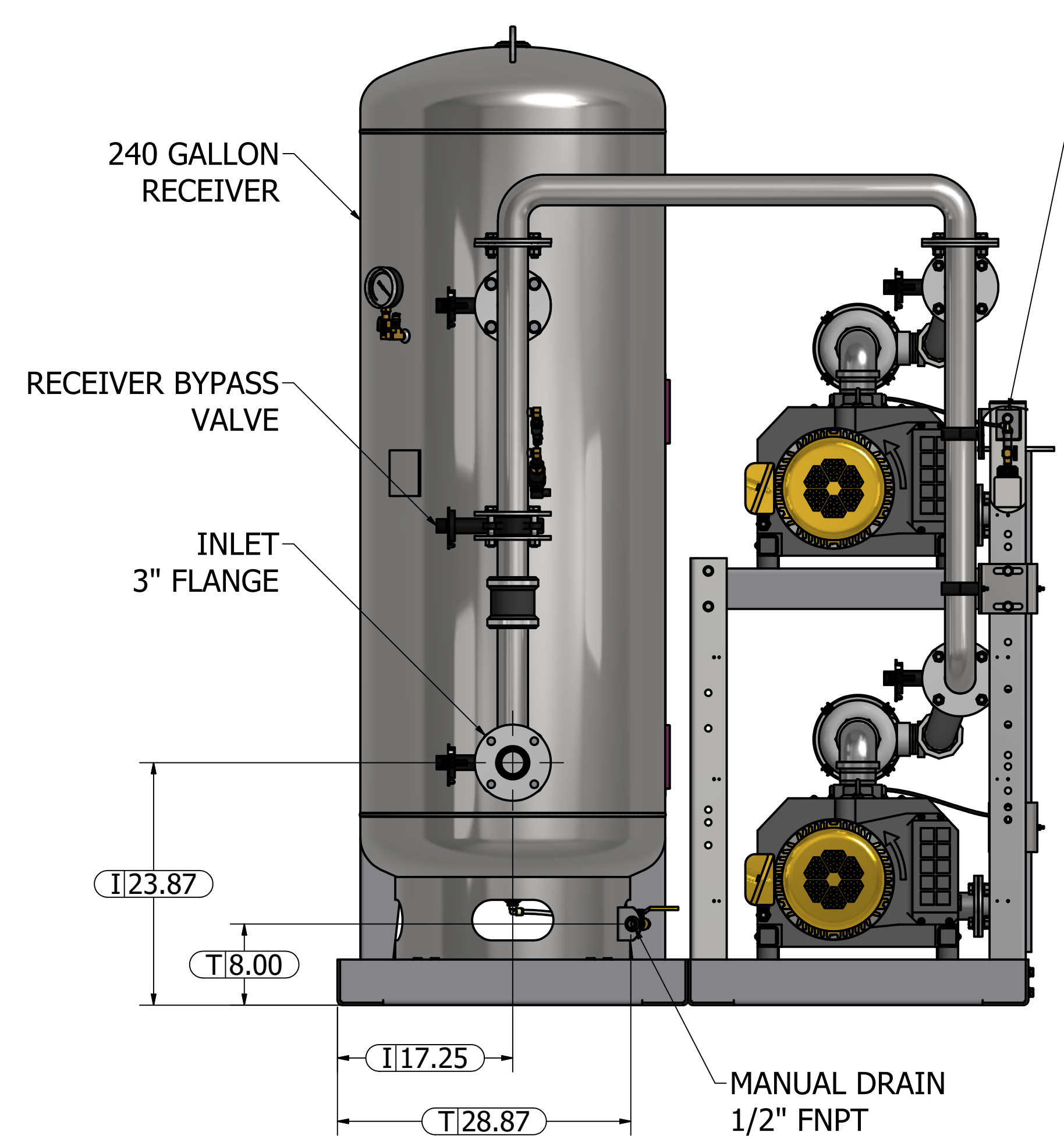
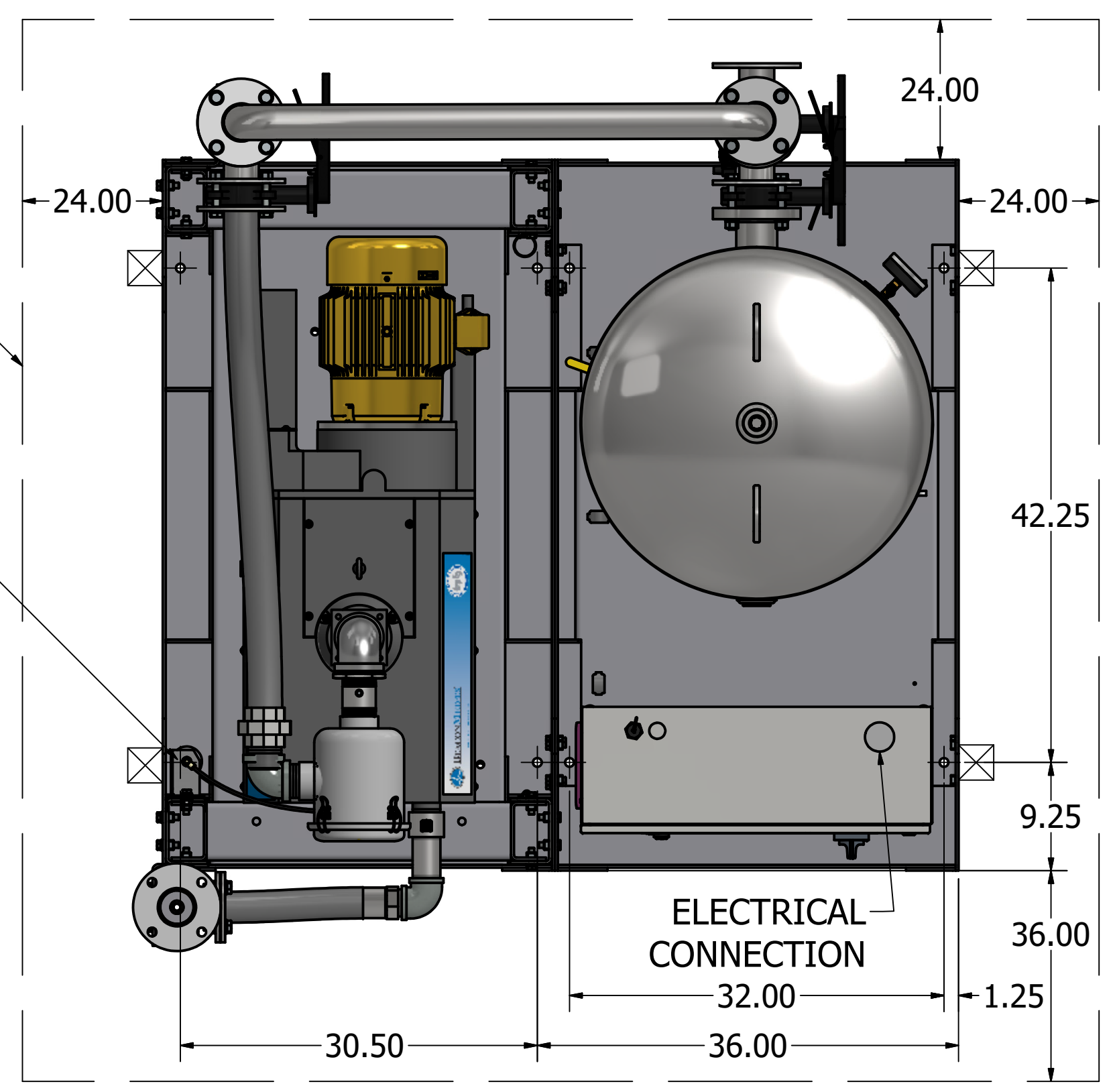


Notes:

1. DISCHARGE MUFFLER WILL BE SHIPPED LOOSE.
2. SYSTEM WEIGHT: 3,206 LBS.
3. ☒ INDICATES LIFTING POINT.
4. ● DENOTES CENTER OF GRAVITY.

SYSTEM CONNECTIONS	
ID	DESCRIPTION
I	INLET LOCATION
D	DISCHARGE LOCATION
C	CONDENSATE DRAIN LOCATION
T	TANK DRAIN LOCATION



Revised: SMB	Date: 04-10-2021	Drawn: GTM	Date: 04-18-2012
		This drawing and the information contained herein remain the property of BeaconMedaes and may not be used for other than the purpose for which it is loaned without the expressed written permission from BeaconMedaes Engineering.	
Description: GENERAL ASSEMBLY 10HP DX CLAW VAC VSD SPC 240G RECEIVER STANDARD AND O2 ASSURED		Part Number: 4107 8538 82	
DN: HOP210808		Rev: 02	
Sheet 1 of 1		DO NOT SCALE THIS DOCUMENT	