

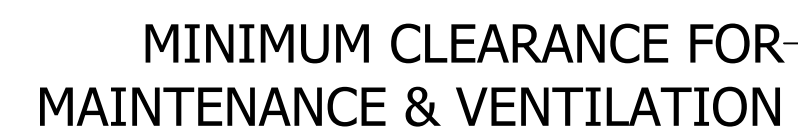


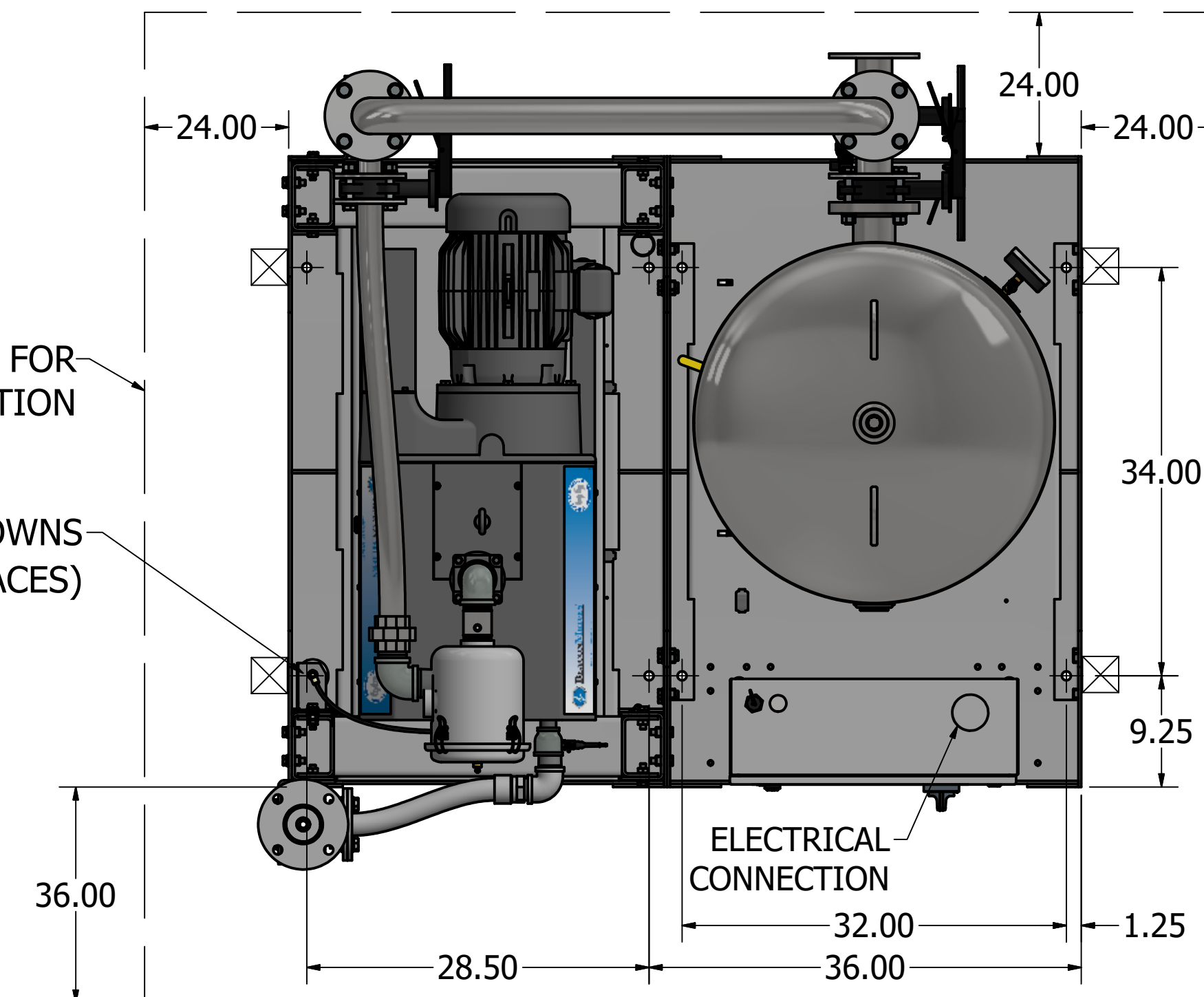
Notes:

1. DISCHARGE MUFFLER WILL BE SHIPPED LOOSE.
2. SYSTEM WEIGHT: 3,453.5 LBS.
3.  INDICATES LIFTING POINT.
4.  DENOTES CENTER OF GRAVITY.

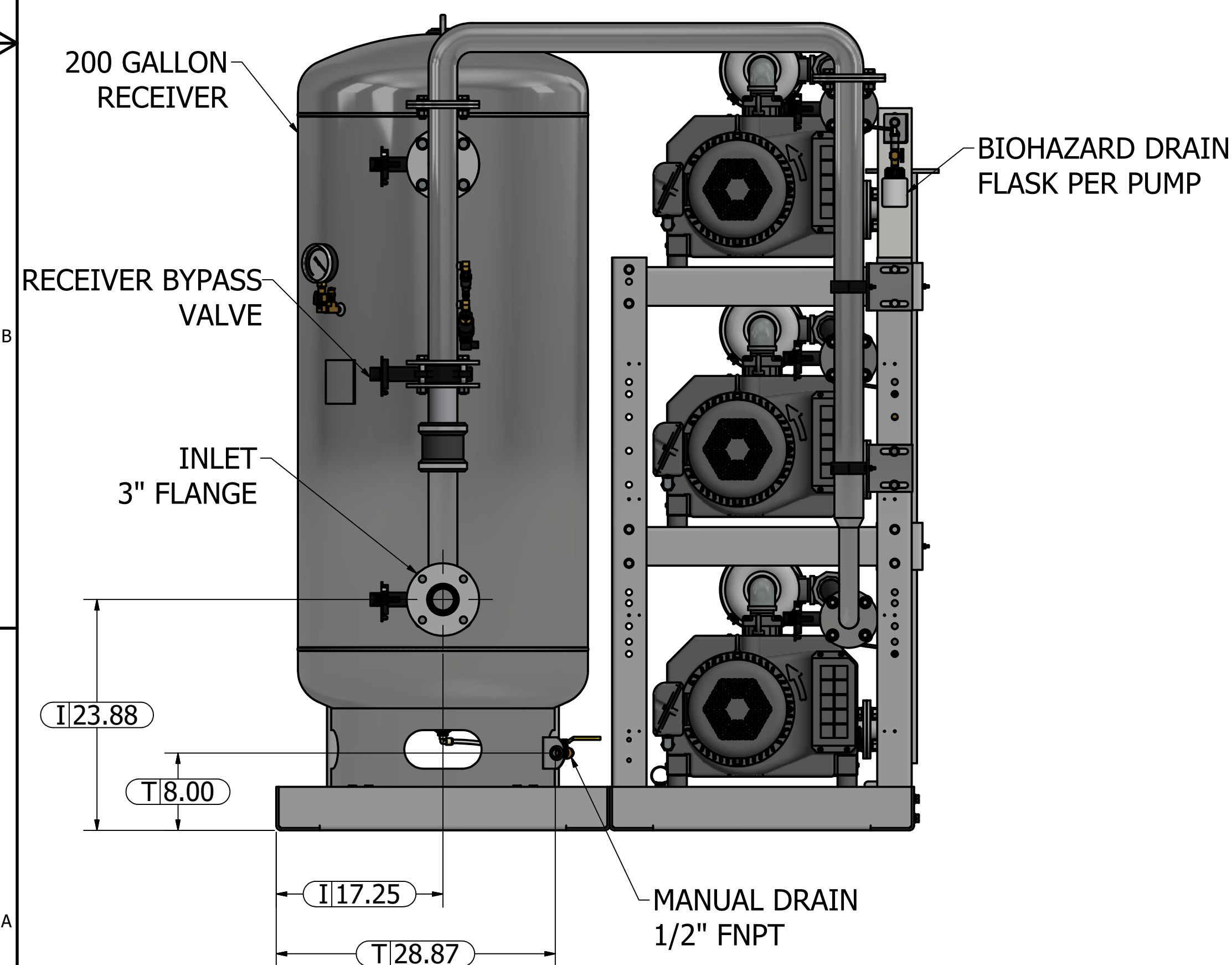
SYSTEM CONNECTIONS	
ID	DESCRIPTION
I	INLET LOCATION
D	DISCHARGE LOCATION
C	CONDENSATE DRAIN LOCATION
T	TANK DRAIN LOCATION



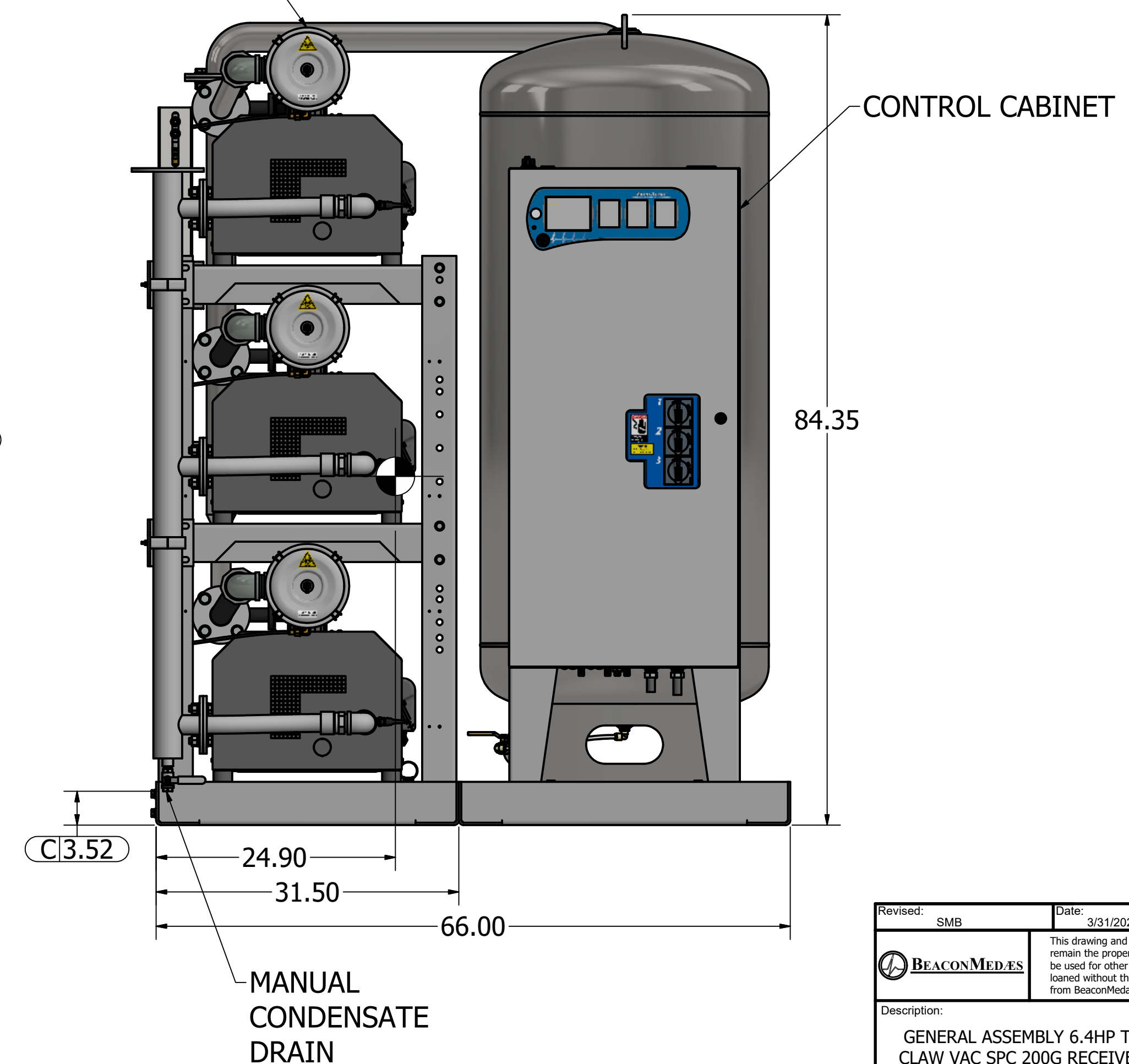
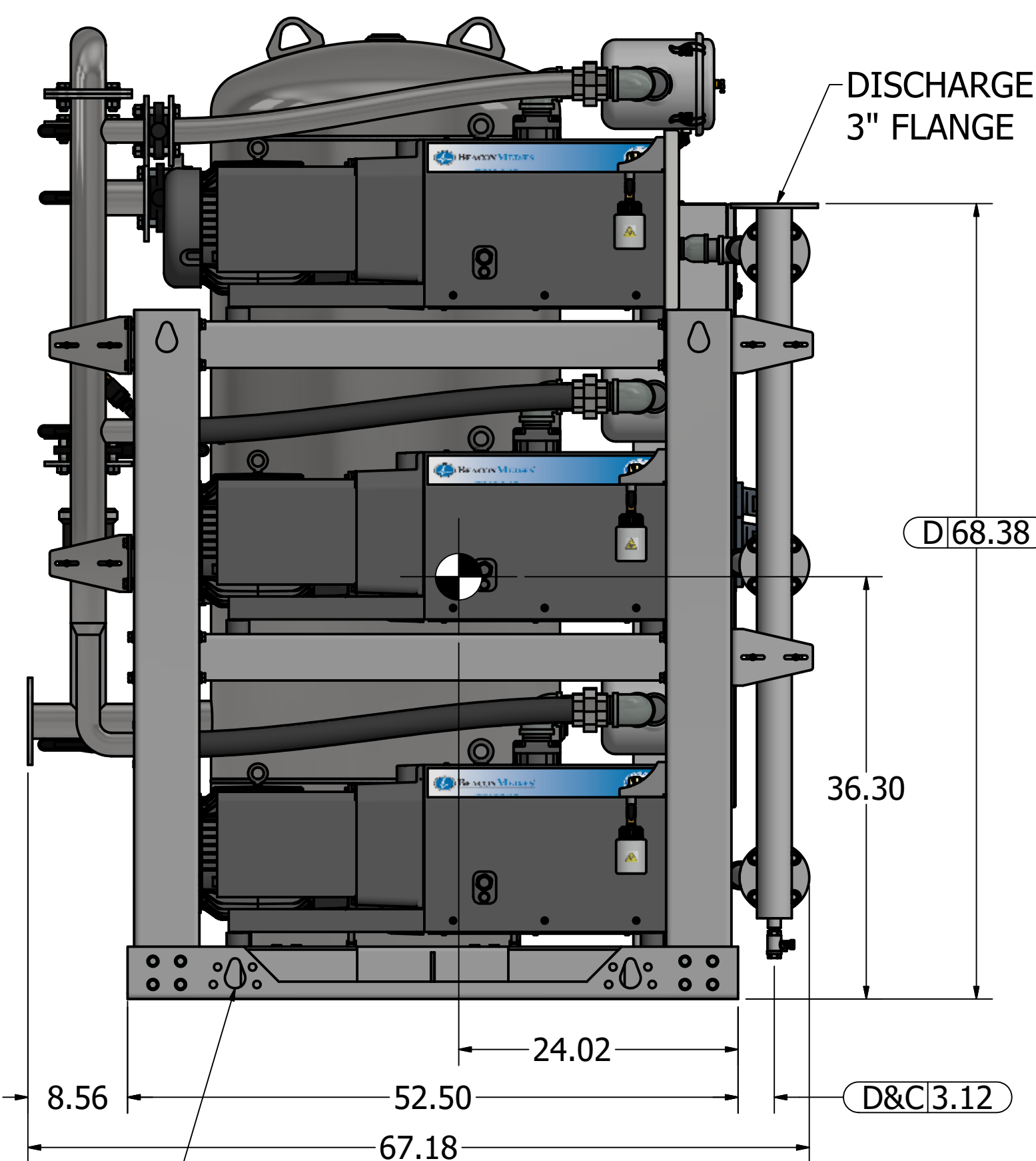
Ø0.75 BOLTDOWNS  
(8 PLACES)


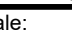


HEPA INTAKE FILTER  
PER PUMP



## INTEGRATED LIFTING EYES



Revised:	SMB	Date:	3/31/2021	Drawn:	MDB	Date:	1/22/2010
 <b>BEACONMEDES</b>		This drawing and the information contained therein remain the property of BeaconMedes and may not be used for other than the purpose for which it is loaned without the expressed written permission from BeaconMedes Engineering.				Scale:	
Description:		Part Number:		4107 8513 70			
GENERAL ASSEMBLY 6.4HP TX CLAW VAC SPC 200 RECEIVER STANDARD & O2 ASSURED		DN: HOP210808		Rev: 02		DO NOT SCALE THIS	
		Sheet 1 of 1					