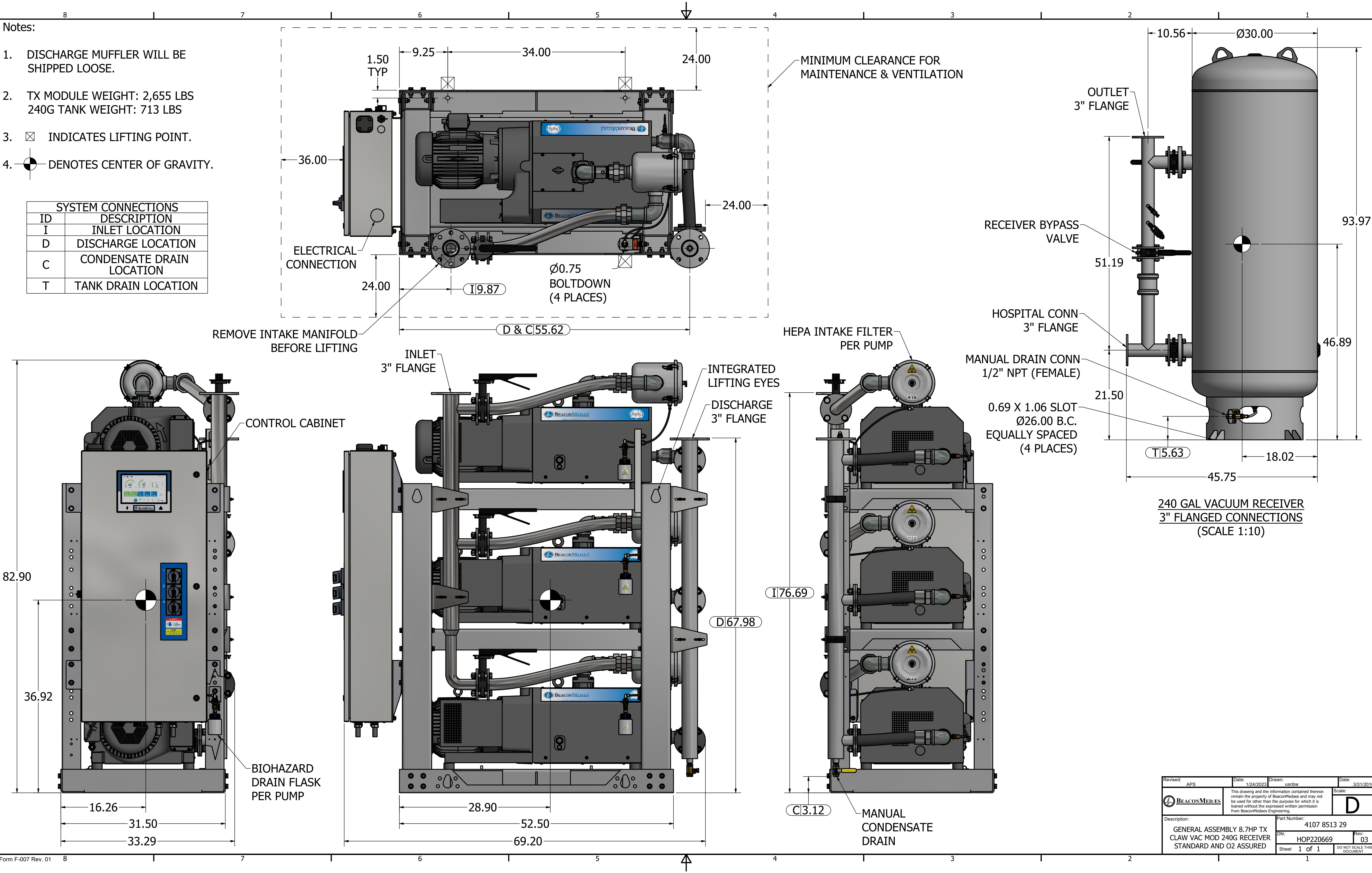


Notes:

1. DISCHARGE MUFFLER WILL BE SHIPPED LOOSE.
2. TX MODULE WEIGHT: 2,655 LBS
240G TANK WEIGHT: 713 LBS
3. ☒ INDICATES LIFTING POINT.
4. ● DENOTES CENTER OF GRAVITY.

SYSTEM CONNECTIONS	
ID	DESCRIPTION
I	INLET LOCATION
D	DISCHARGE LOCATION
C	CONDENSATE DRAIN LOCATION
T	TANK DRAIN LOCATION



Revised: APS	Date: 1/24/2023	Drawn: usnbw	Date: 3/31/2010
BEACONMED/ES		Scale: D	
Description: GENERAL ASSEMBLY 8.7HP TX CLAW VAC MOD 240G RECEIVER STANDARD AND O2 ASSURED		Part Number: 4107 8513 29	
DN: HOP220669		Rev: 03	
Sheet 1 of 1		DO NOT SCALE THIS DOCUMENT	