



Notes:

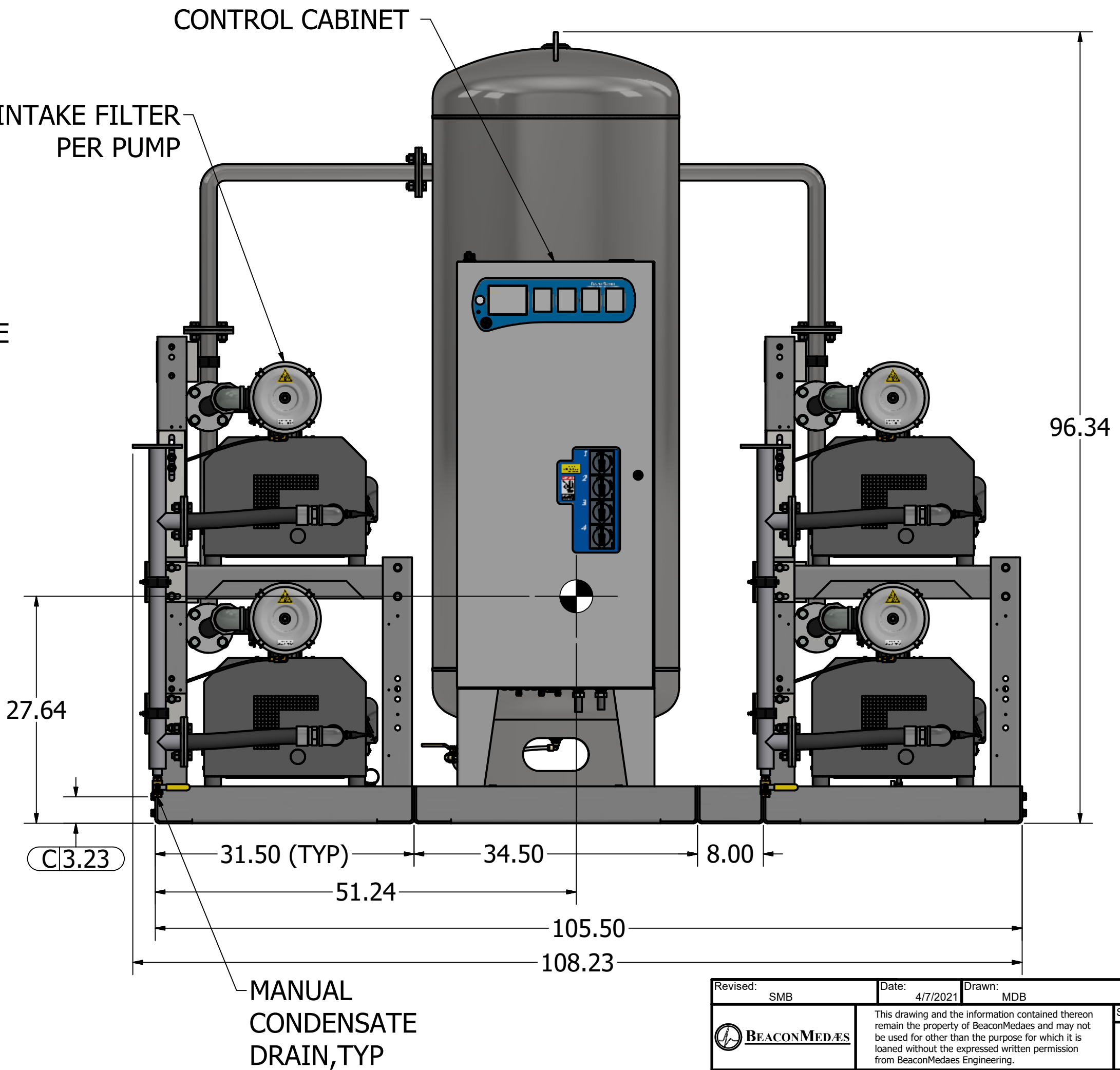
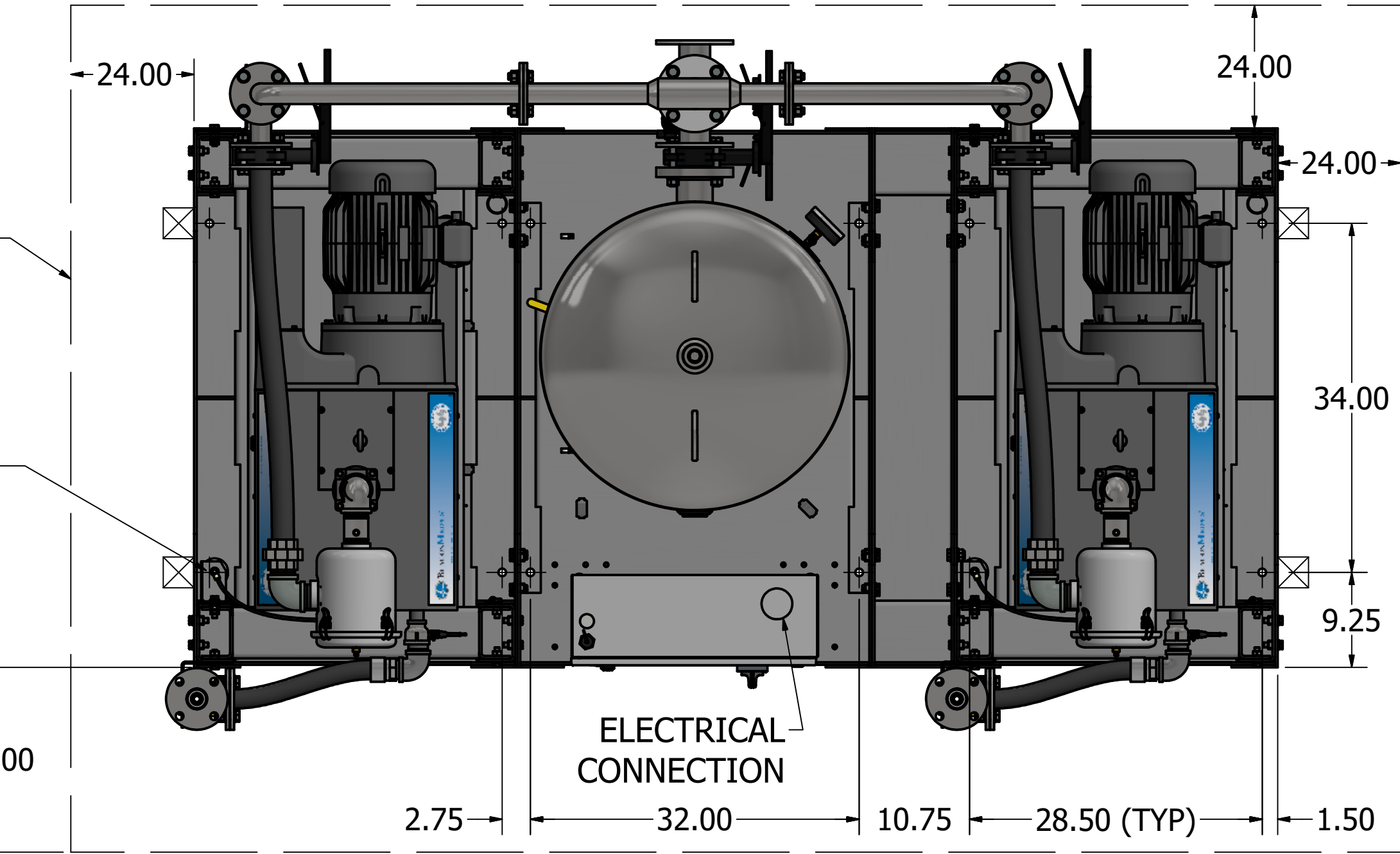
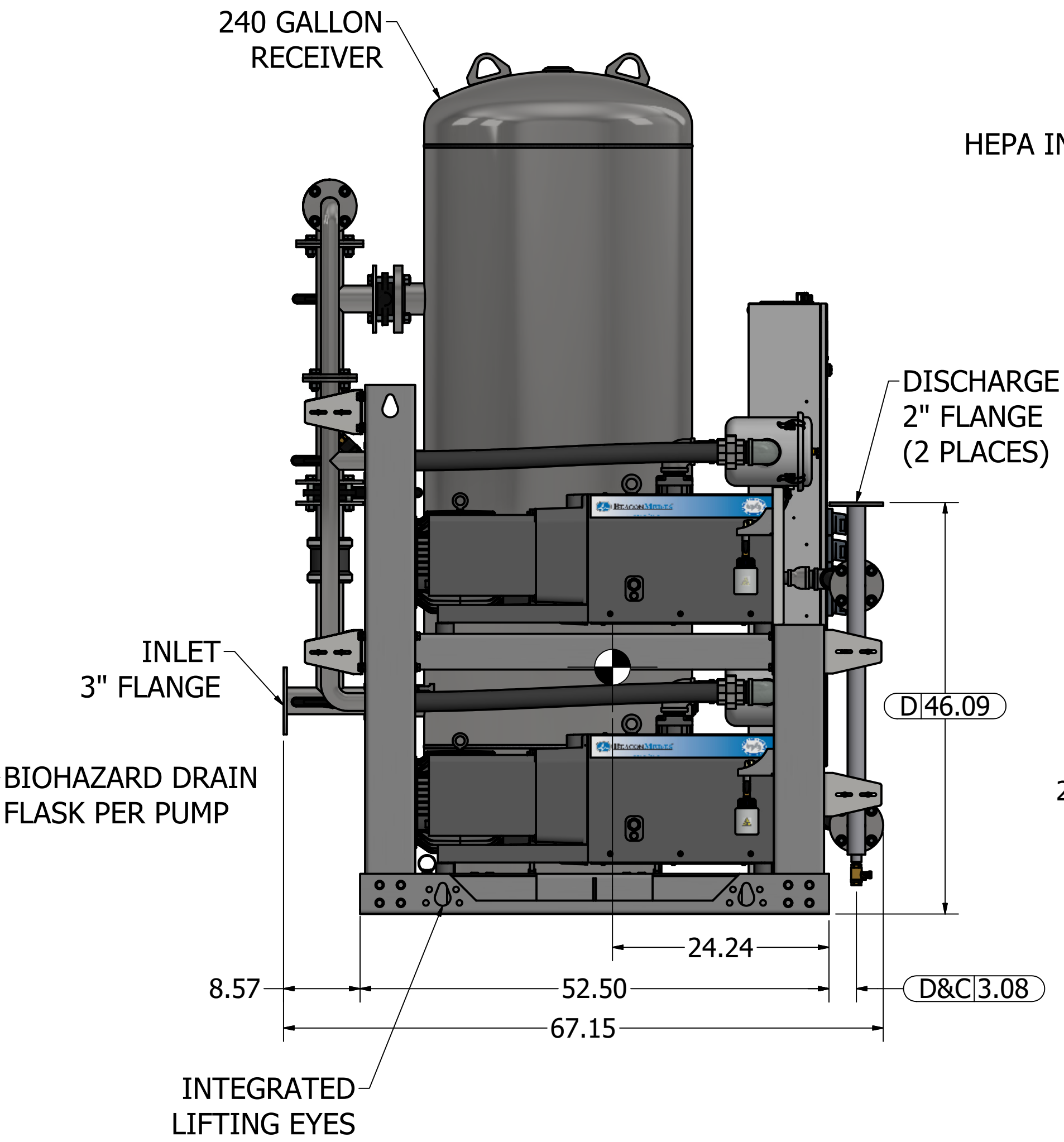
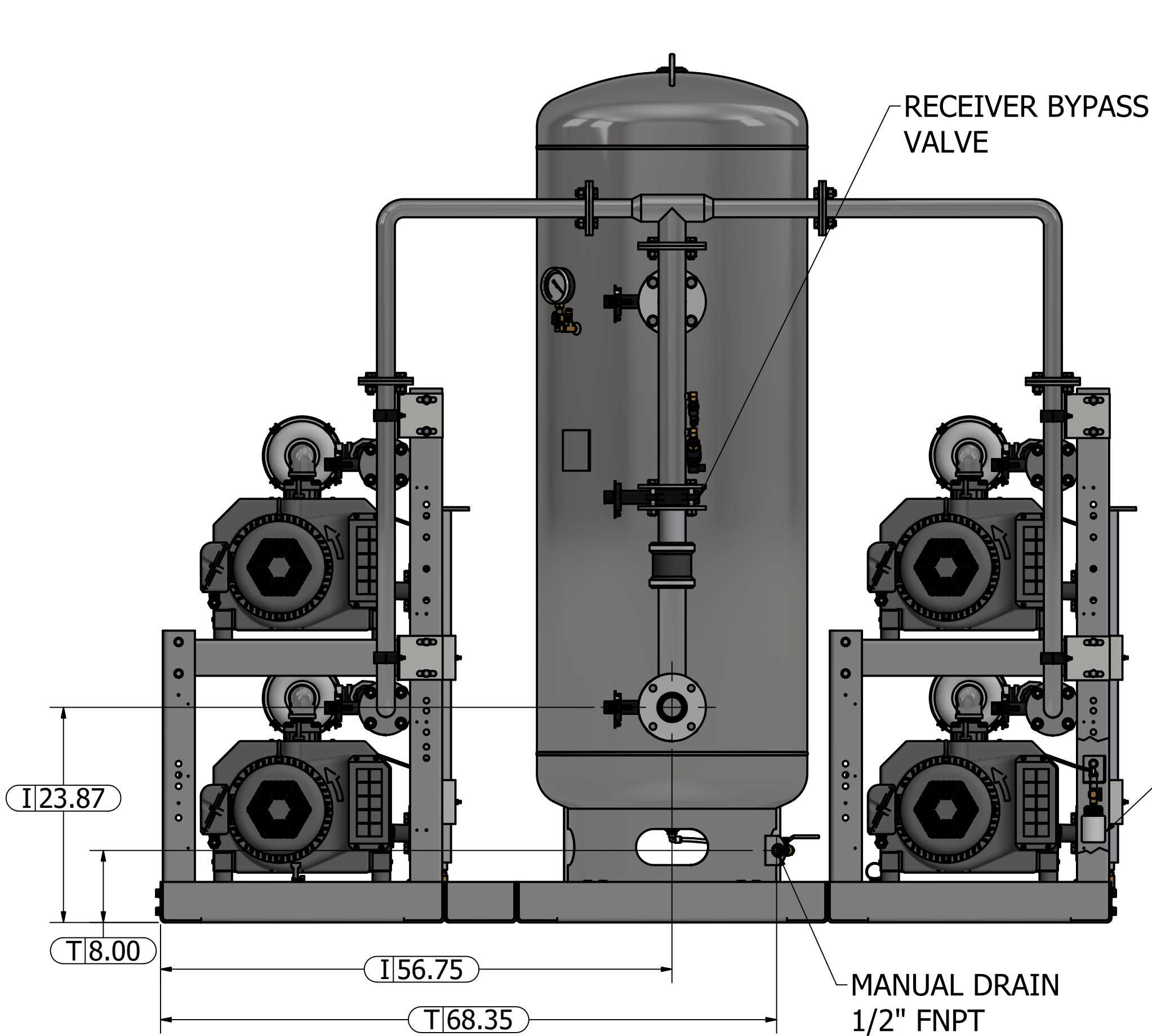
- 1. DISCHARGE MUFFLERS WILL BE SHIPPED LOOSE.
- 2. SYSTEM WEIGHT: 4,546 LBS.
- 3.  INDICATES LIFTING POINT.
- 4.  DENOTES CENTER OF GRAVITY.


SYSTEM CONNECTIONS	
ID	DESCRIPTION
I	INLET LOCATION
D	DISCHARGE LOCATION
C	CONDENSATE DRAIN LOCATION
T	TANK DRAIN LOCATION

MINIMUM CLEARANCE FOR  
MAINTENANCE & VENTILATION

Ø0.75 BOLTDOWNS  
(12 PLACES)

ELECTRICAL  
CONNECTION



Revised: SMB	Date: 4/7/2021	Drawn: MDB	Date: 2/4/2010
		This drawing and the information contained therein remain the property of BeaconMedaes and may not be used for other than the purpose for which it is loaned without the expressed written permission from BeaconMedaes Engineering.	
Description: GENERAL ASSEMBLY 7.5HP QX CLAW VAC SPC 240G RECEIVER STANDARD & O2 ASSURED		Part Number: 4107 8513 85	
DN: HOP210808		Rev: 02	
Sheet 1 of 1		DO NOT SCALE THIS DOCUMENT	