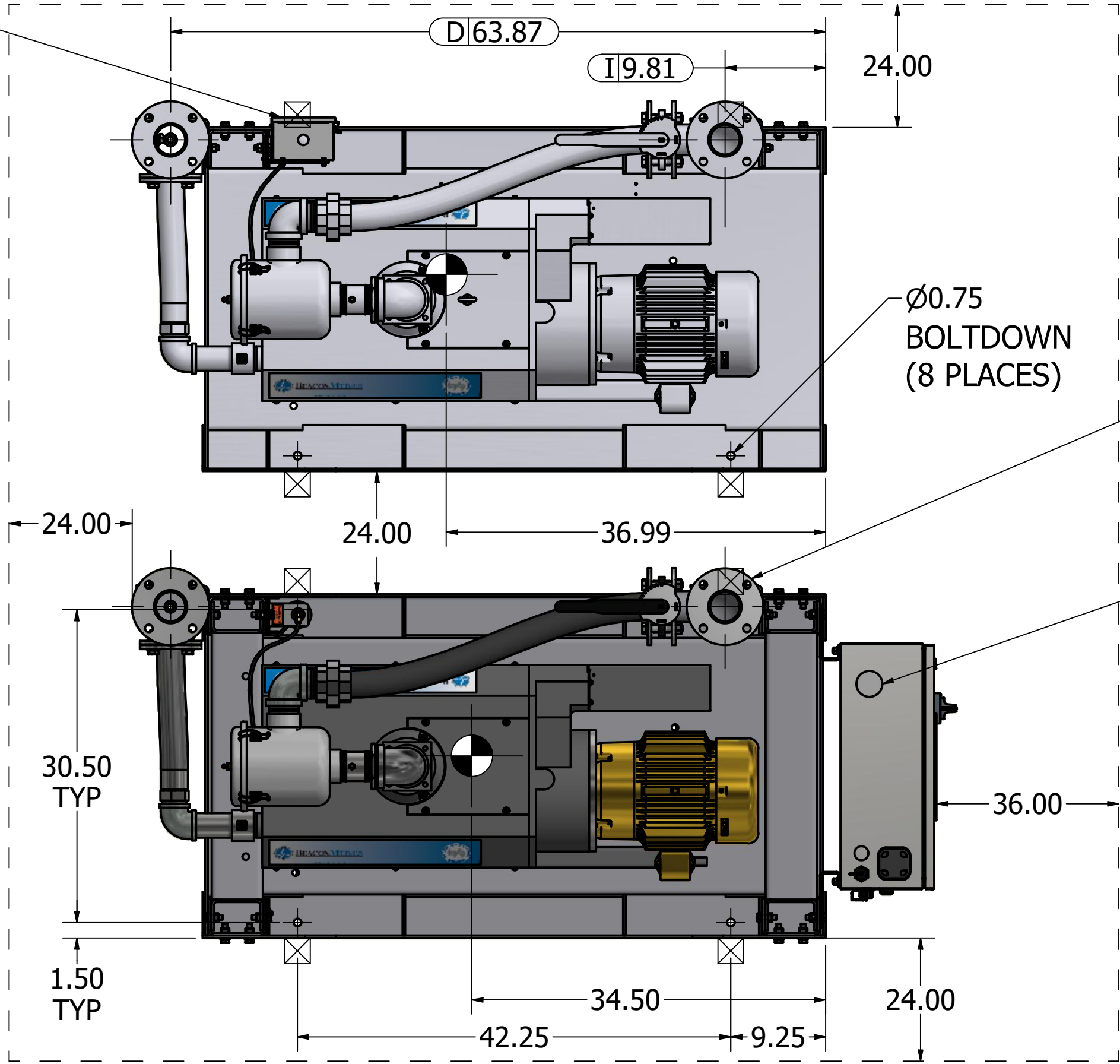


- Notes:
- 1. DISCHARGE MUFFLERS WILL BE SHIPPED LOOSE.
 - 2. DUPLEX MODULE WITH CONTROL BOX WEIGHT: 2,292 LBS
FUTURE SIMPLEX MODULE WEIGHT: 1,143 LBS
200G TANK WEIGHT: 658 LBS
 - 3. ☒ INDICATES LIFTING POINT.
 - 4. ● DENOTES CENTER OF GRAVITY.

SYSTEM CONNECTIONS	
ID	DESCRIPTION
I	INLET LOCATION
D	DISCHARGE LOCATION
C	CONDENSATE DRAIN LOCATION
T	TANK DRAIN LOCATION

REMOVE JUNCTION BOX BEFORE LIFTING



MINIMUM CLEARANCE FOR MAINTENANCE & VENTILATION

REMOVE INTAKE MANIFOLD BEFORE LIFTING (2 PLACES)

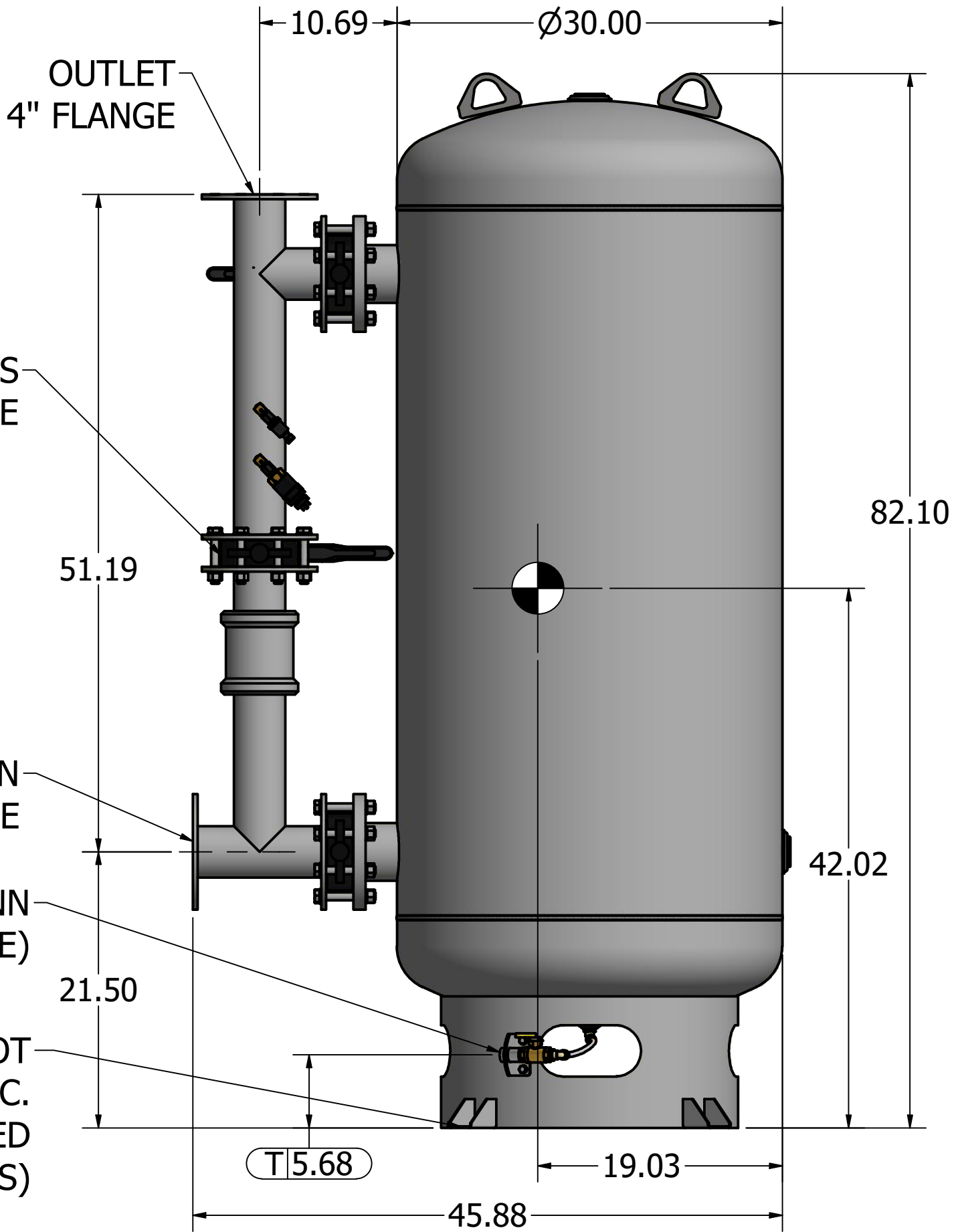
ELECTRICAL CONNECTION

RECEIVER BYPASS VALVE

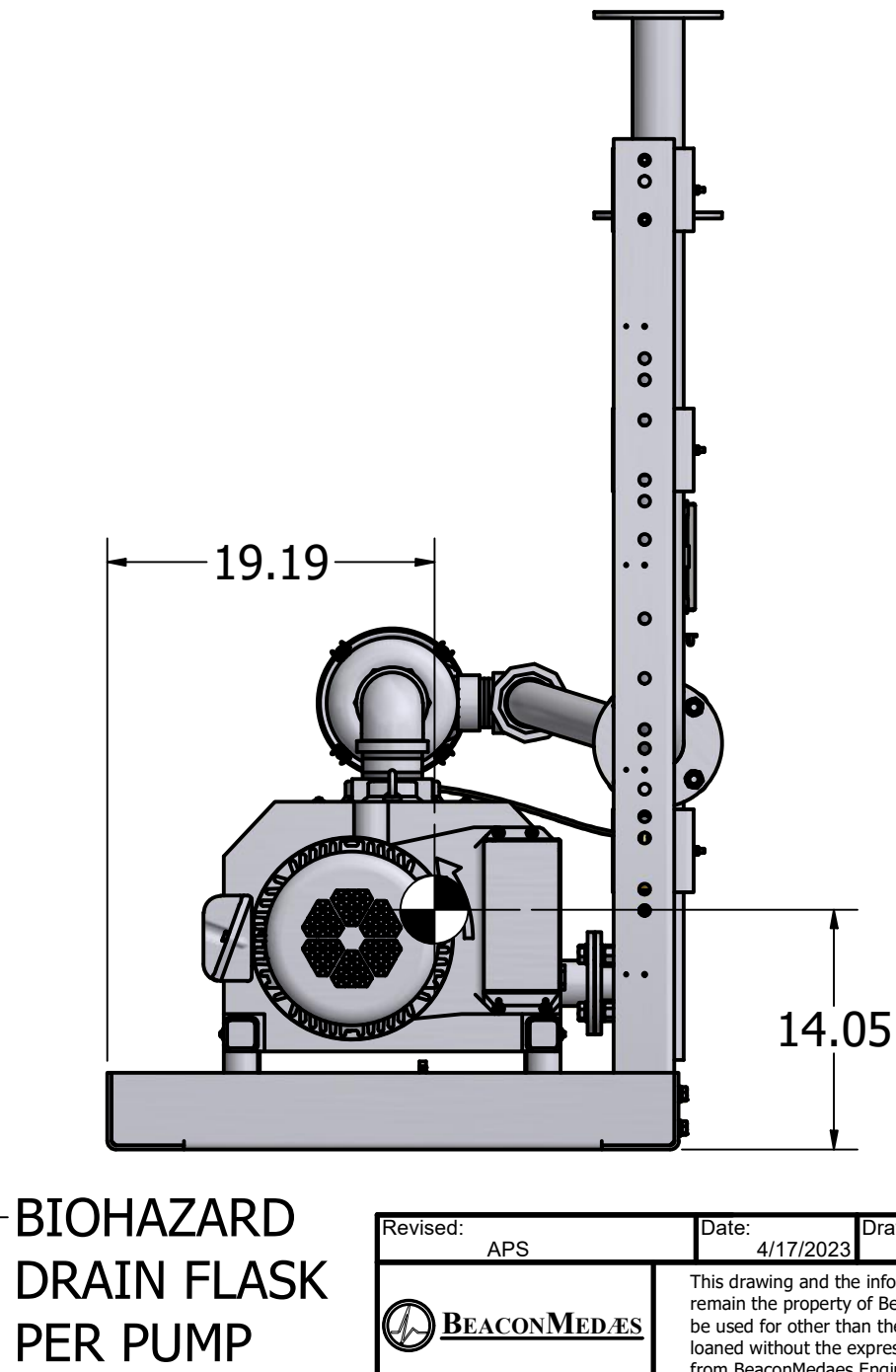
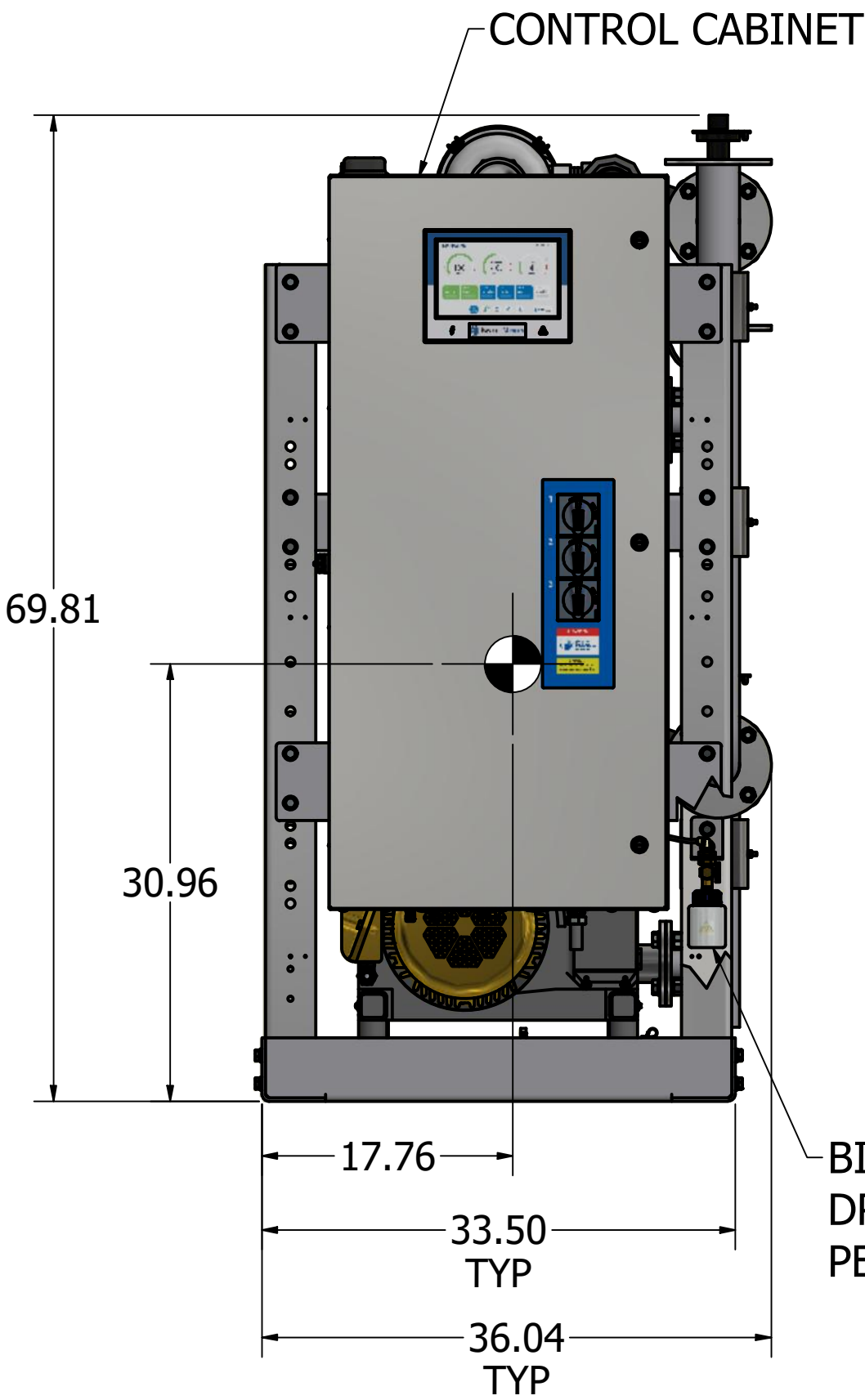
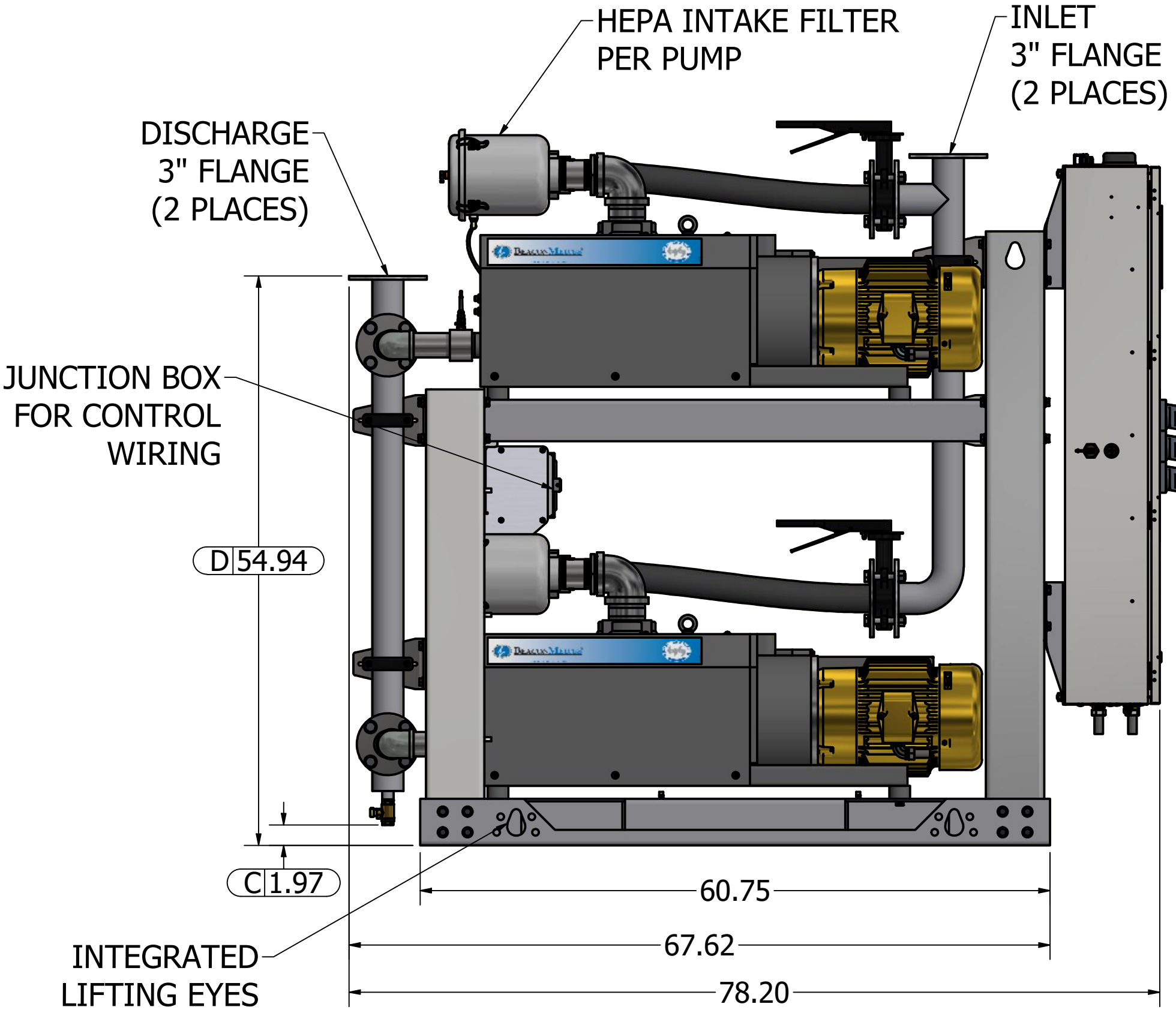
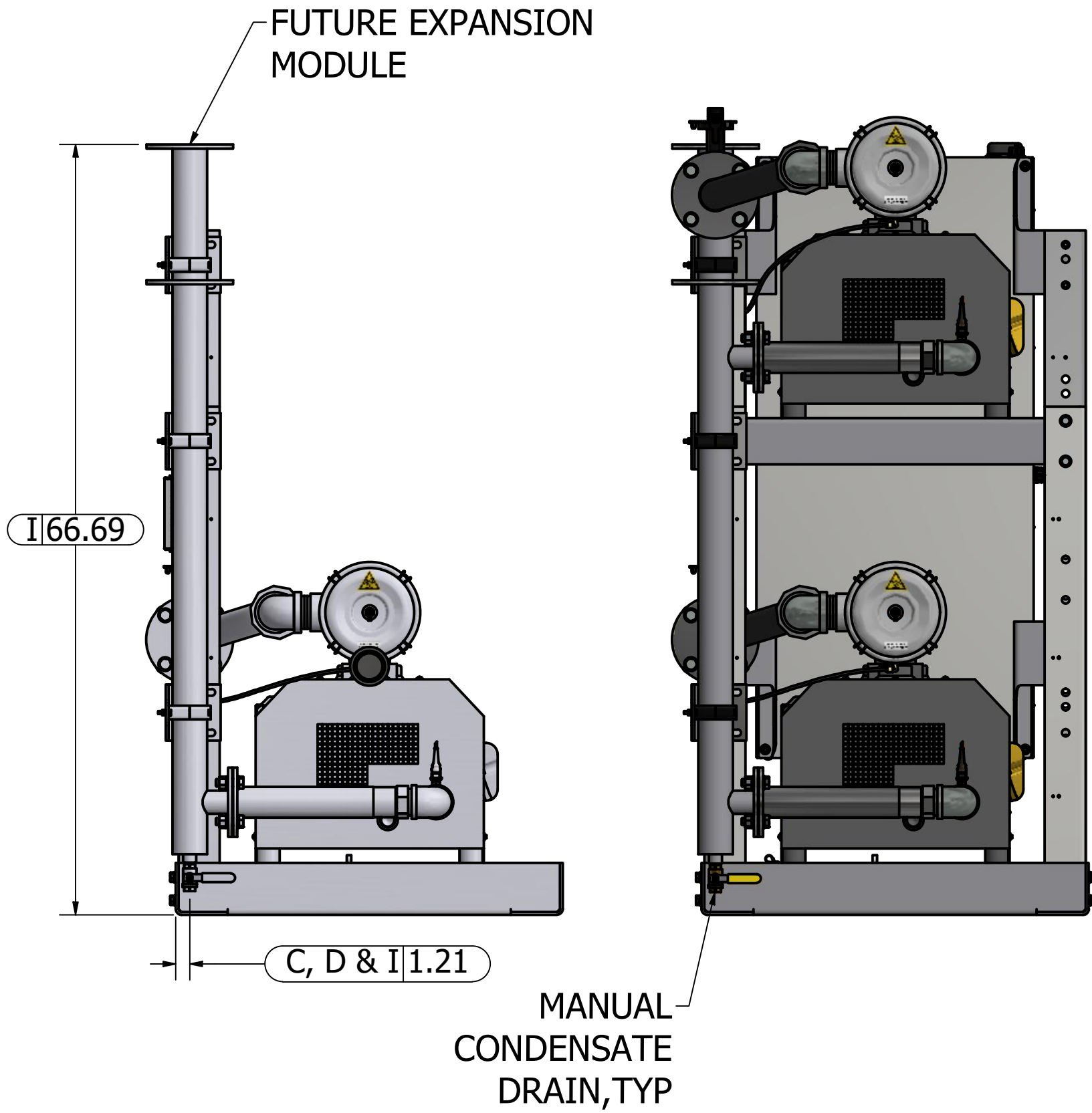
HOSPITAL CONN 4" FLANGE

MANUAL DRAIN CONN 1/2" NPT (FEMALE)

0.69 X 1.06 SLOT Ø26.00 B.C. EQUALLY SPACED (4 PLACES)



200 GAL VACUUM RECEIVER
4" FLANGED CONNECTIONS
(SCALE 1:10)



Revised: APS	Date: 4/17/2023	Drawn: GTM	Date: 5/13/2012
BEACONMEDAES		D	
Description: GENERAL ASSEMBLY 10HP DX-X-TX CLAW VAC MOD 200G RECEIVER STANDARD AND O2 ASSURED		Part Number: 4107 8539 18	
DN: HOP230841		Rev: 03	
Sheet 1 of 1		DO NOT SCALE THIS DOCUMENT	