

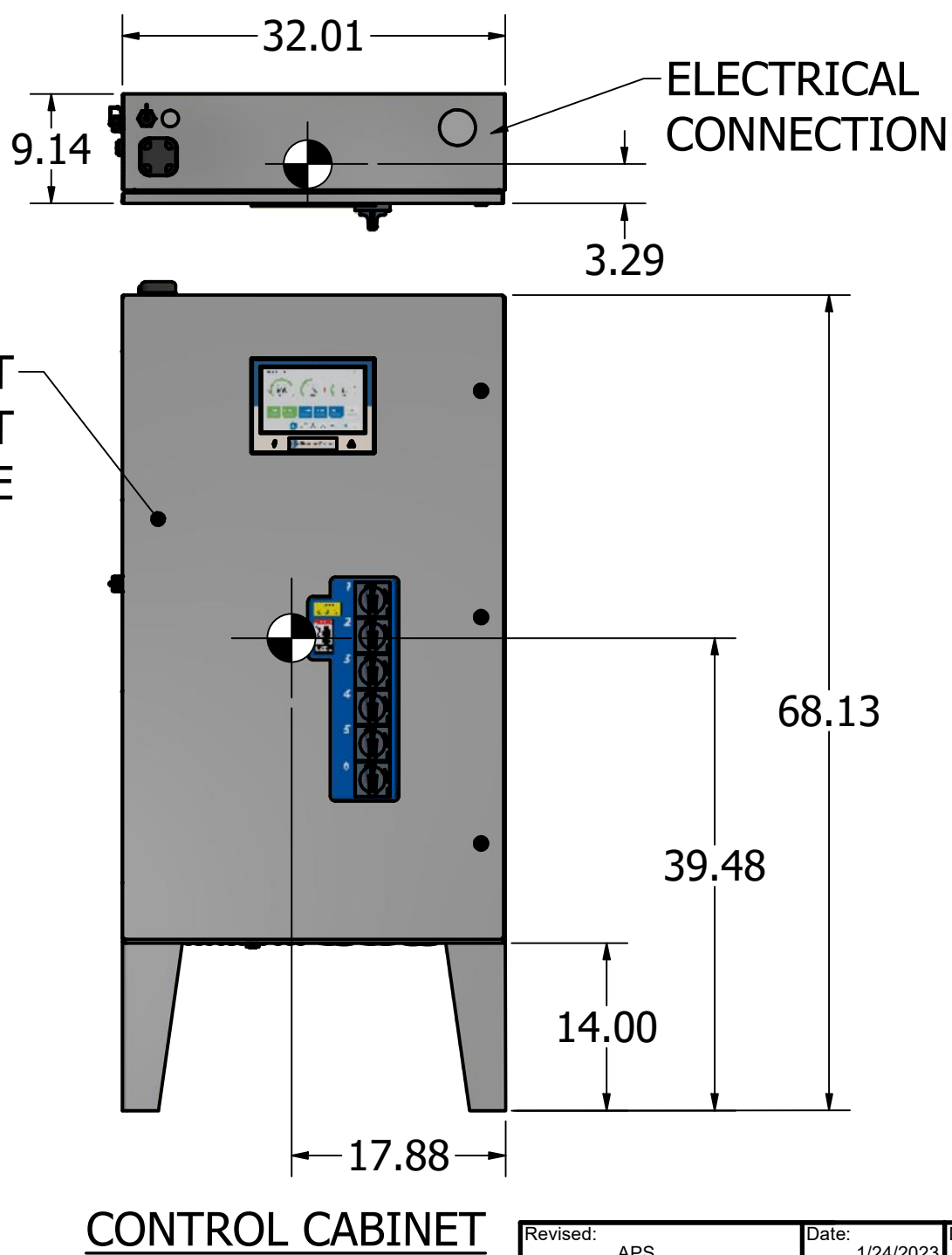
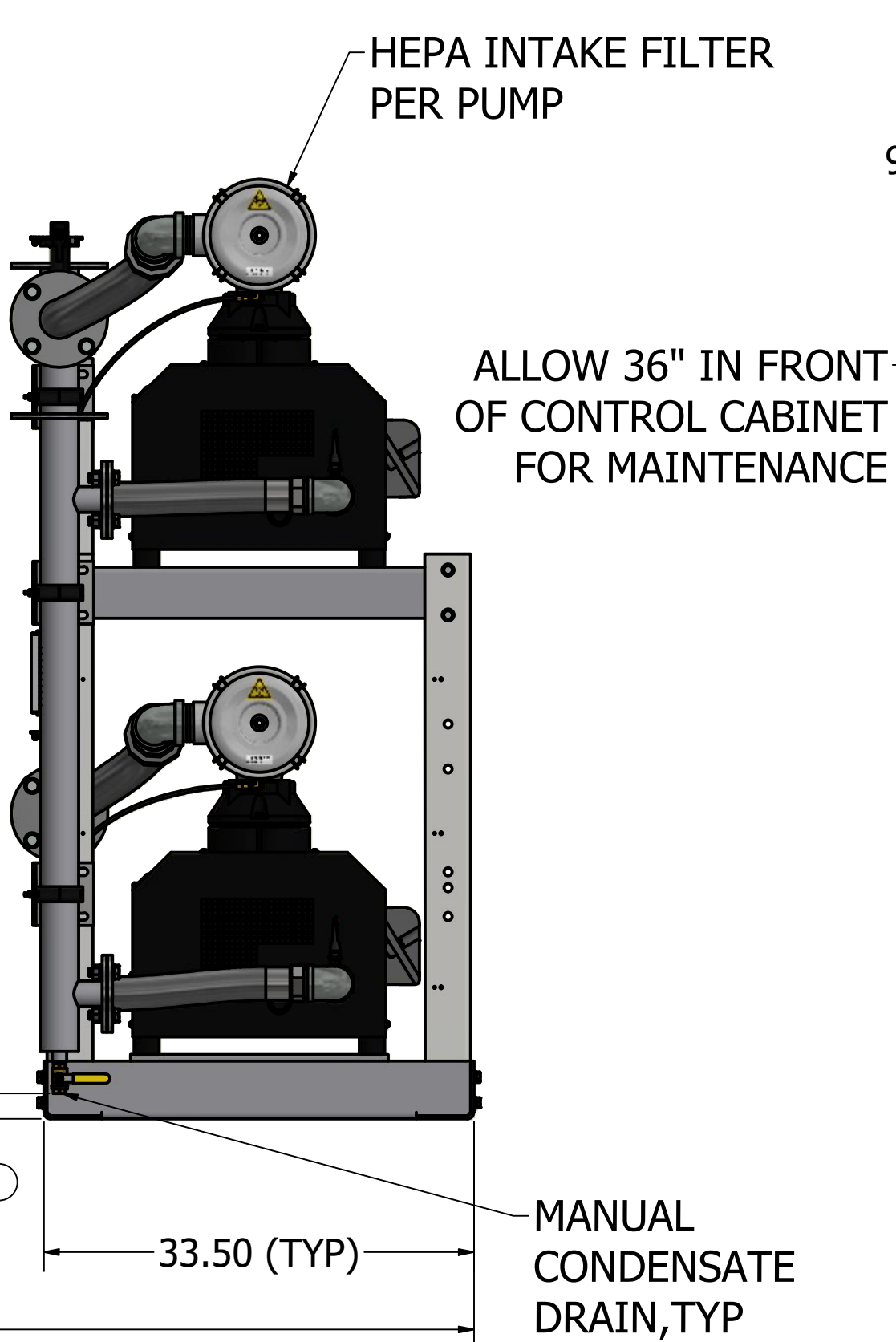
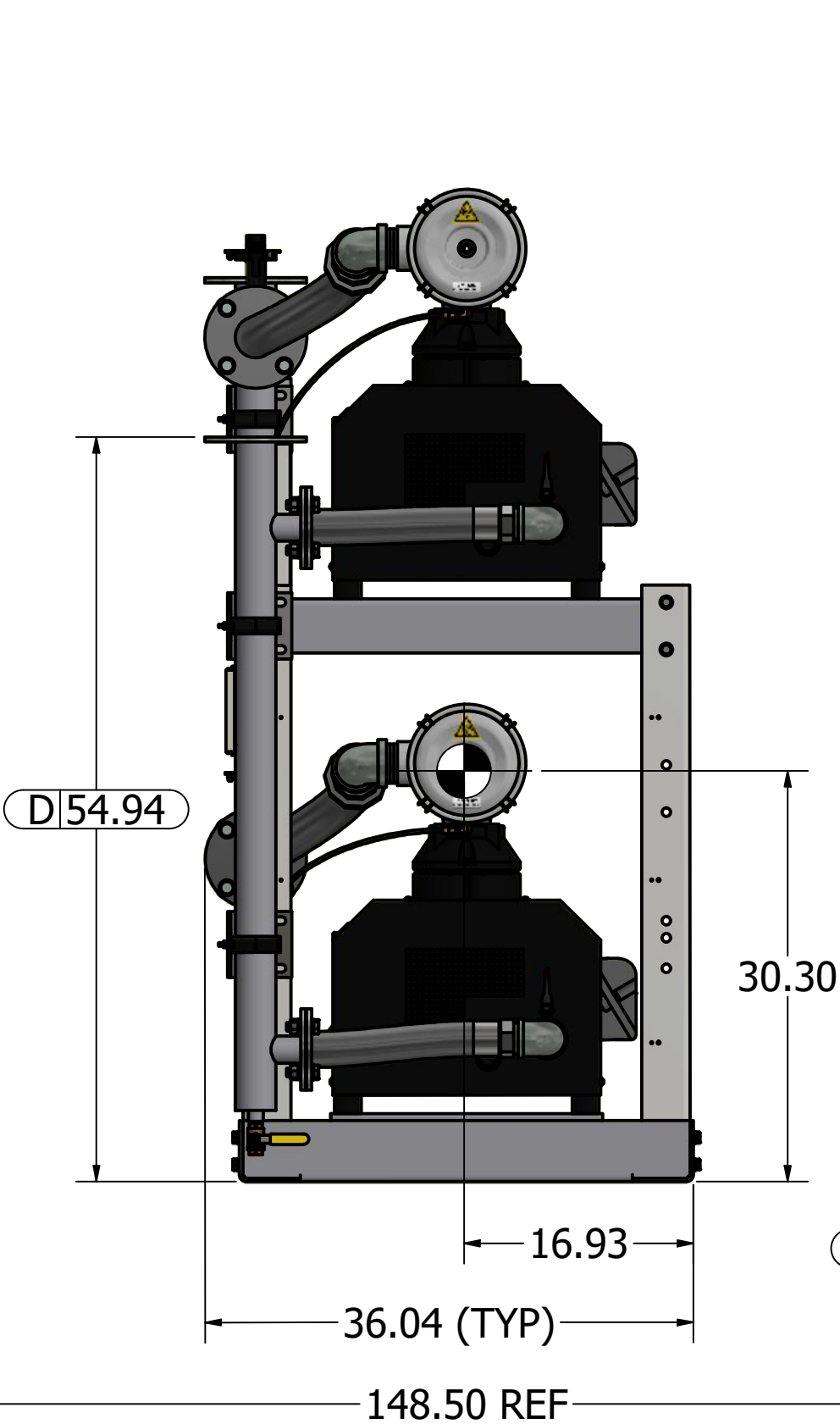
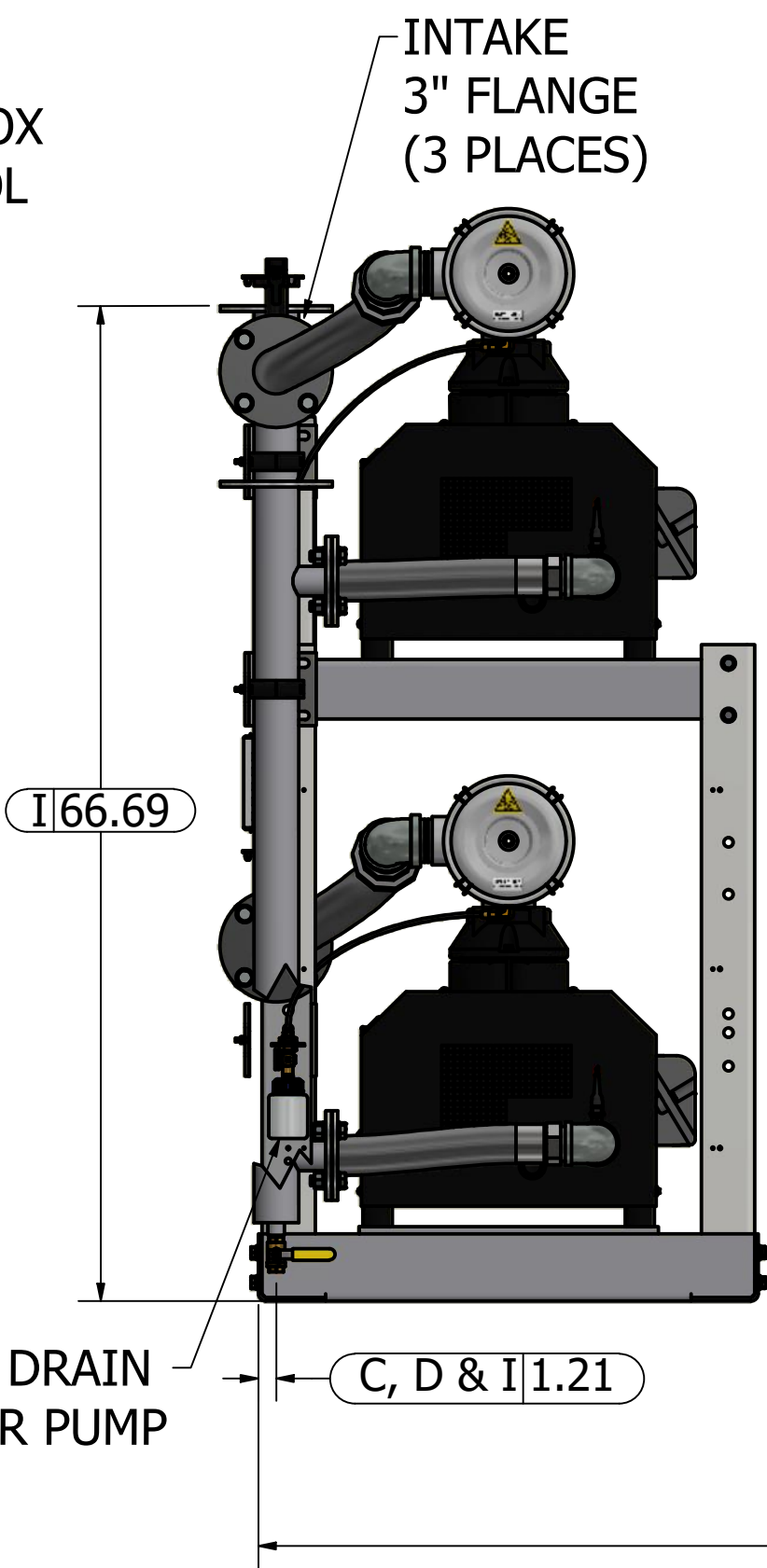
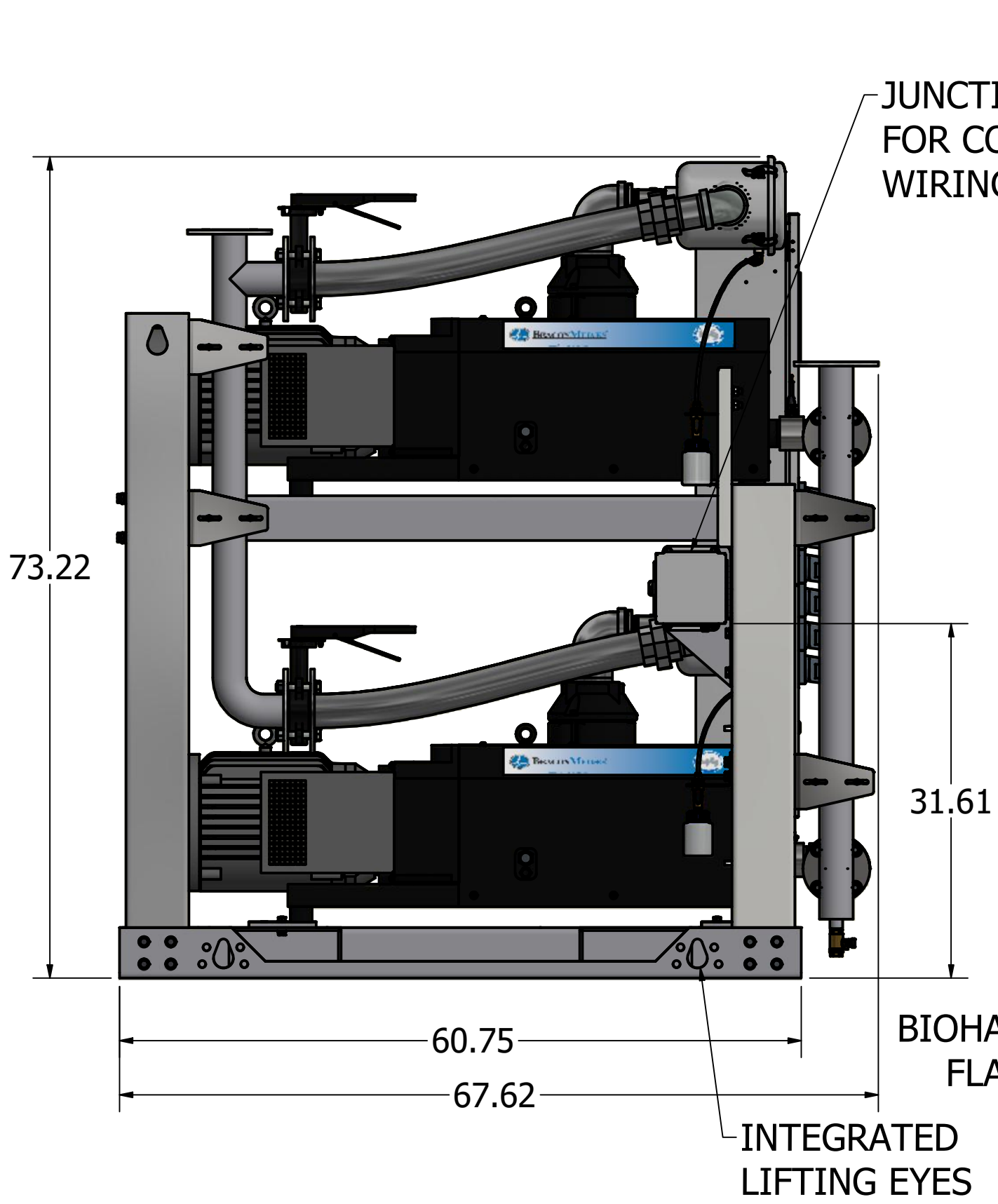
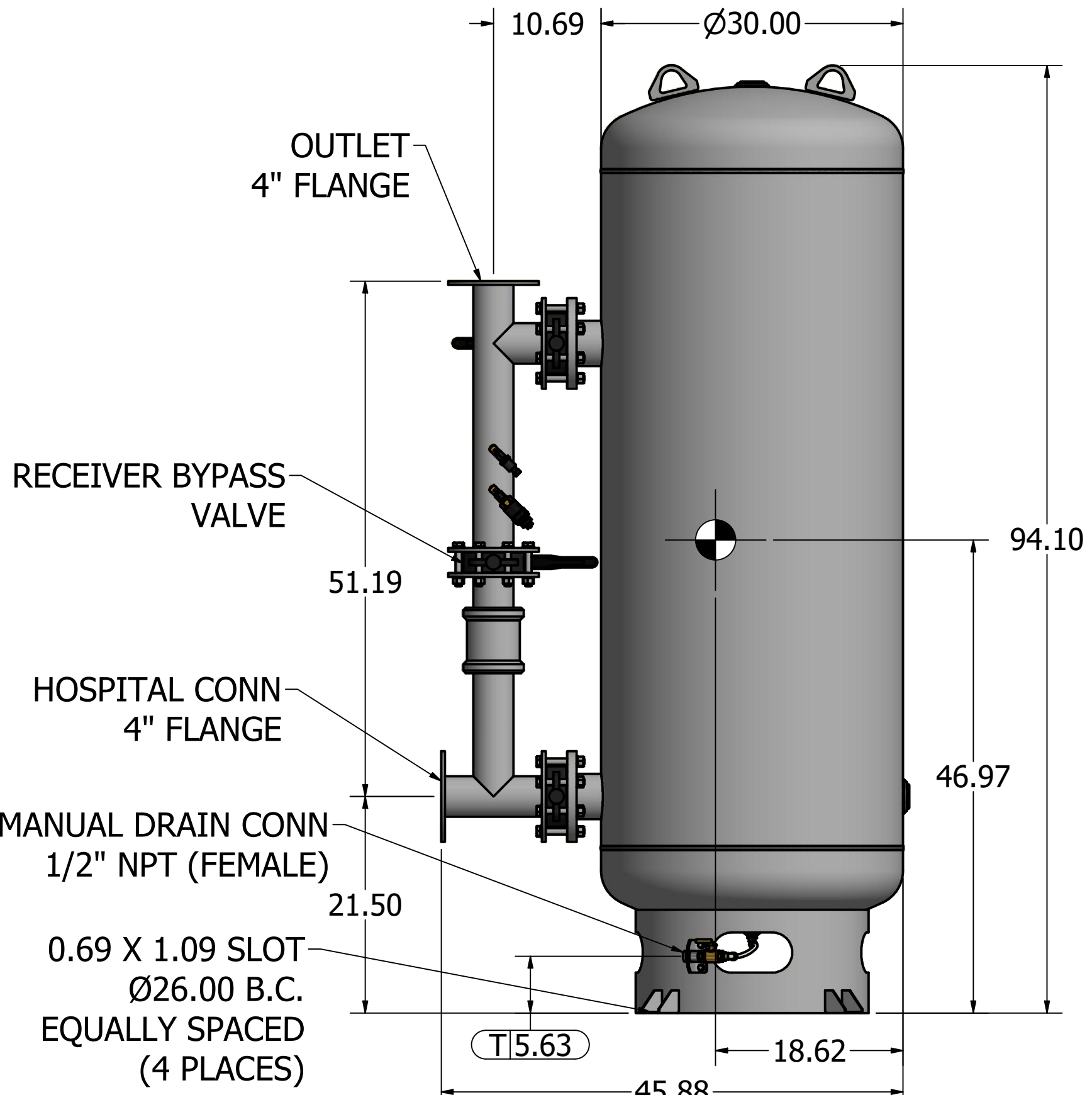
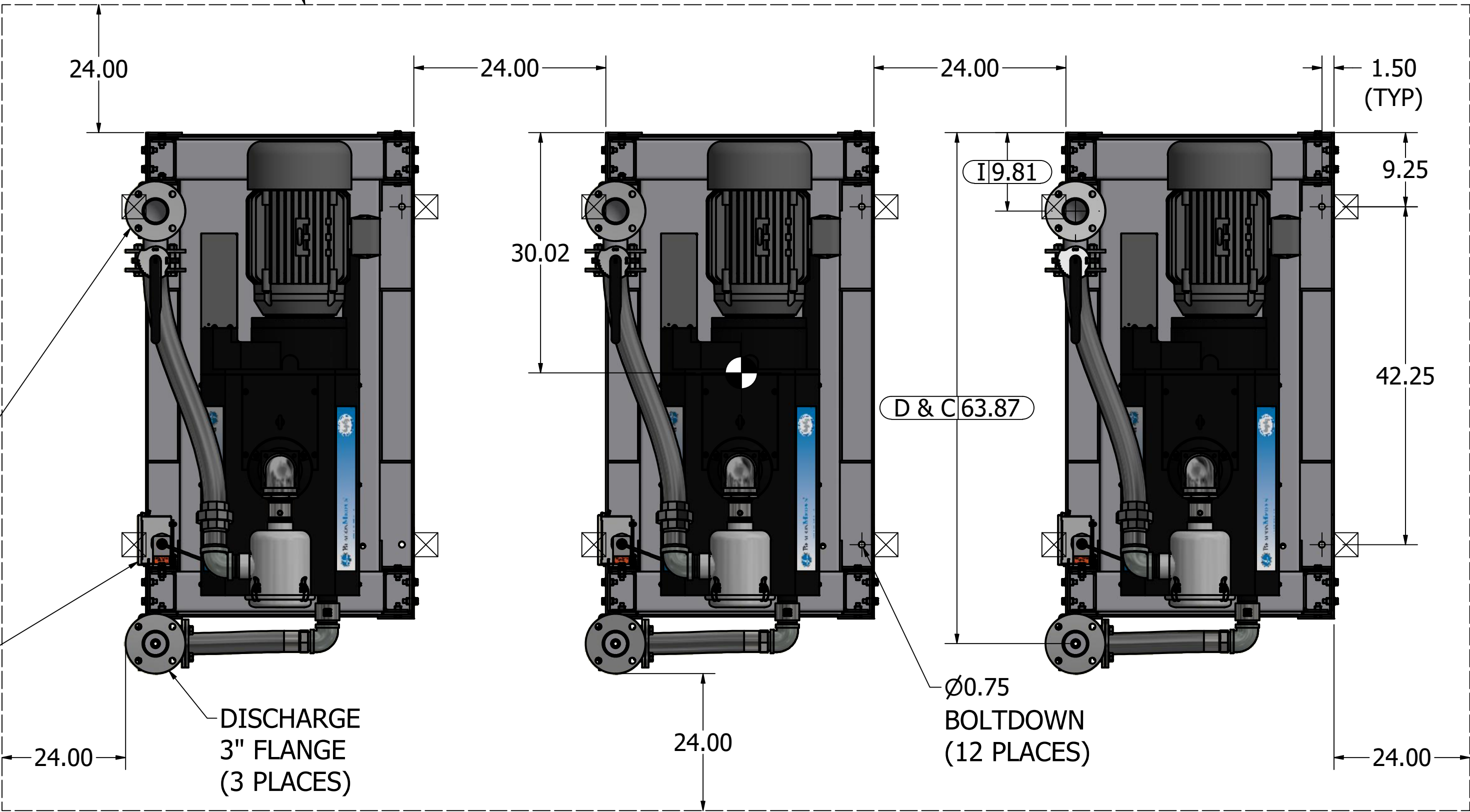
- NOTES:
- DISCHARGE MUFFLERS WILL BE SHIPPED LOOSE.
  - DX MODULE WEIGHT: 2,306 LBS.  
240G TANK WEIGHT: 733 LBS  
CONTROL PANEL WEIGHT: 229 LBS.
  - ☒ INDICATES LIFTING POINT.
  - DENOTES CENTER OF GRAVITY.

SYSTEM CONNECTIONS	
ID	DESCRIPTION
I	INLET LOCATION
D	DISCHARGE LOCATION
C	CONDENSATE DRAIN LOCATION
T	TANK DRAIN LOCATION

REMOVE INTAKE MANIFOLD  
BEFORE LIFTING  
(3 PLACES)

REMOVE JUNCTION BOX  
BEFORE LIFTING  
(3 PLACES)

MINIMUM CLEARANCE FOR  
MAINTENANCE & VENTILATION



Revised: APS	Date: 1/24/2023	Drawn: JWO	Date: 2/6/2014
BEACONMEDIES		Scale: D	
Description: GENERAL ASSEMBLY 15HP HX CLAW VAC MOD 240G RECEIVER STANDARD		Part Number: 4107 8549 11	
DN: HOP220669		Rev: 03	
Sheet 1 of 1		DO NOT SCALE THIS DOCUMENT	