

Note X:
 -Text changed. MED labels removed. CG,mass updated
 - Air inlet flange details added
 - Mk-IV Elektronikon changed to Mk5
 -Dimension drawing standardized



Approx. Mass ±110 (LBS)		Center of Gravity ±2 (inch)	
Type	Pack	Dim.	Pack
ZR37VSD	2915	W	19.8
ZR55VSD	2998	L	40.8
		H	27.8

Ed	Posi- tion	See Note X	Gewijzigd van Modified from	2011-05-20 Datum Date	Ingev./Goedg. Intr./Appd.

All materials supplied are in compliance with the requirements of the List of Prohibited Substances

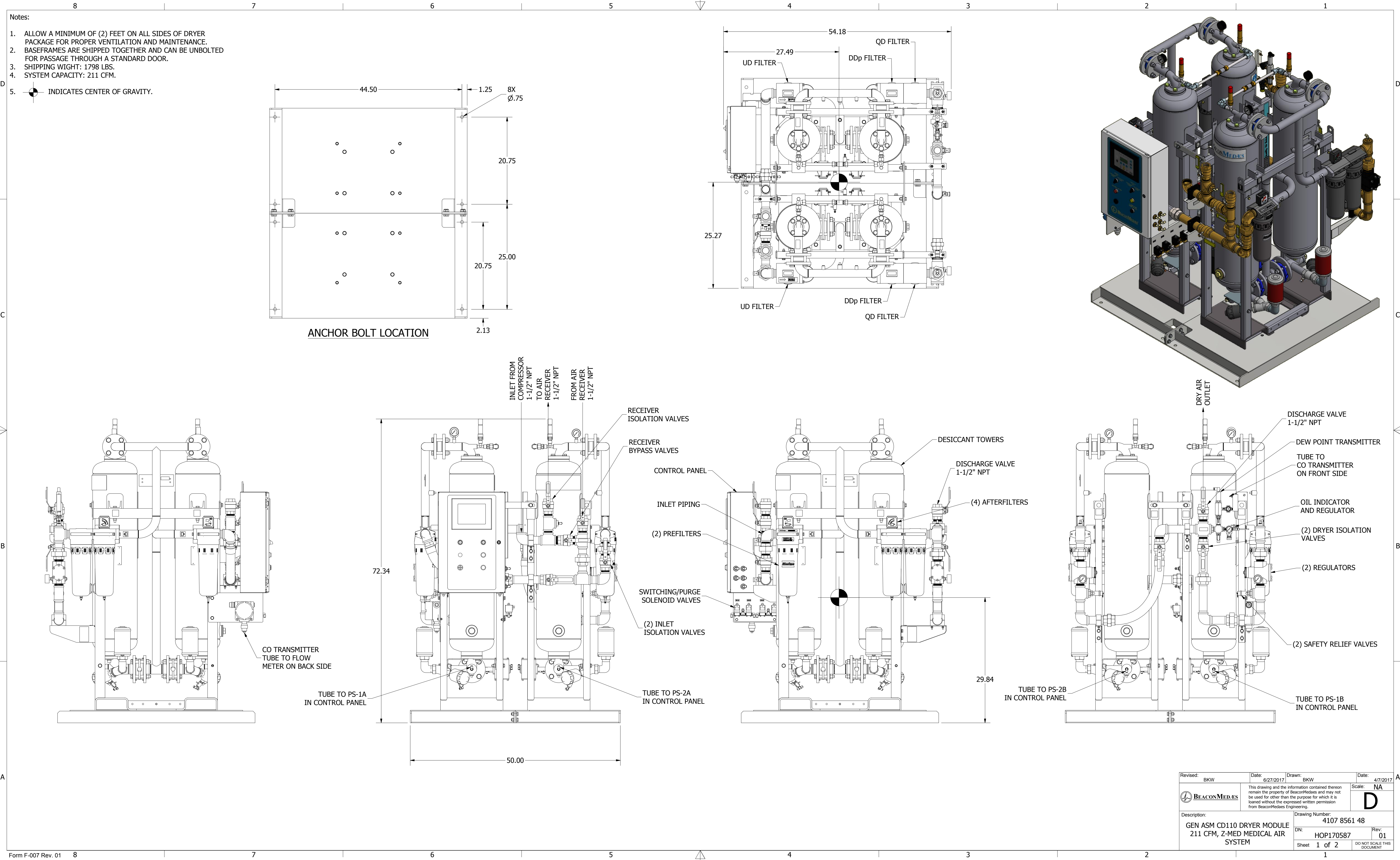
9820577300	02.10
Parent 3D model	Ed. Version 3D


Note:
 * With full open door

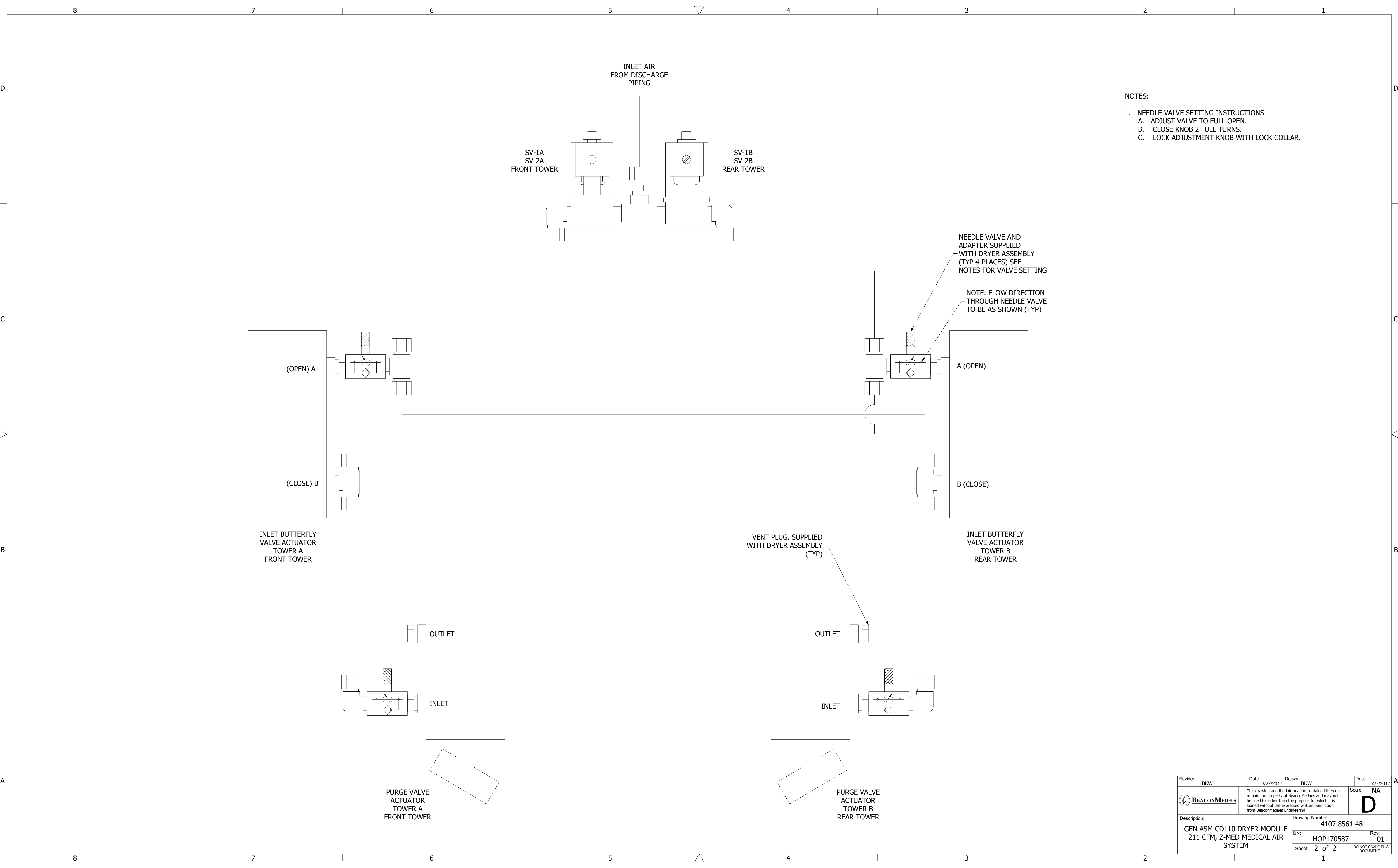
Tolerances, if not indicated, according to:													
ATLAS COPCO STANDARD CLASS													
Name		DIMENS.					ZR37-55VSD+MED			Secrecy Class			
Material		NOT APPLICABLE								1102 K / 3			
Treatment		Not Applicable								INV			
		Scale 1:10		Family		A/Compare					Drawing owner		
		Drawn by sraman		Blank nr.		Replaces					All		
STATUS		Version Drwg 02.11		Blank wt.		0 Kg Finl wt.		444.135 Kg		Designation		Sheet 1 of 3	
3D		Des checked.		Prod checked.		Approved.		Date 2008-01-22		9820577300			
		Approved											



Sheet 1 / 1



Revised: BKW	Date: 6/27/2017	Drawn: BKW	Date: 4/7/2017
 BEACONMEDAES		This drawing and the information contained therein remain the property of BeaconMedaes and may not be used for other than the purpose for which it is loaned without the expressed written permission from BeaconMedaes Engineering.	
Description: GEN ASM CD110 DRYER MODULE 211 CFM, Z-MED MEDICAL AIR SYSTEM		Drawing Number: 4107 8561 48	
DN: HOP170587		Rev: 01	
Sheet 1 of 2		DO NOT SCALE THIS DOCUMENT	



- NOTES:
- NEEDLE VALVE SETTING INSTRUCTIONS
 - ADJUST VALVE TO FULL OPEN.
 - CLOSE KNOB 2 FULL TURNS.
 - LOCK ADJUSTMENT KNOB WITH LOCK COLLAR.

Revised: BKW	Date: 6/27/2017	Drawn: BKW	Date: 4/7/2017
	This drawing and the information contained therein remain the property of BeaconMedaes and may not be used for other than the purpose for which it is loaned without the expressed written permission from BeaconMedaes Engineering.		Scale: NA
			D
Description: GEN ASM CD110 DRYER MODULE 211 CFM, Z-MED MEDICAL AIR SYSTEM		Drawing Number: 4107 8561 48	
DN: HOP170587		Rev: 01	
Sheet 2 of 2		DO NOT SCALE THIS DOCUMENT	

