

Note X:
 -Text changed. MED labels removed. CG,mass updated
 - Air inlet flange details added
 - Mk-IV Elektronikon changed to Mk5
 -Dimension drawing standardized

Approx. Mass ±110 (LBS)		Center of Gravity ±2 (inch)	
Type	Pack	Dim.	Pack
ZR37VSD	2915	W	19.8
ZR55VSD	2998	L	40.8
		H	27.8

02	See Note X	2011-05-20	
Ed	Position	Gewijzigd van Modified from	Ingev./Goedg. Intr./Appd.

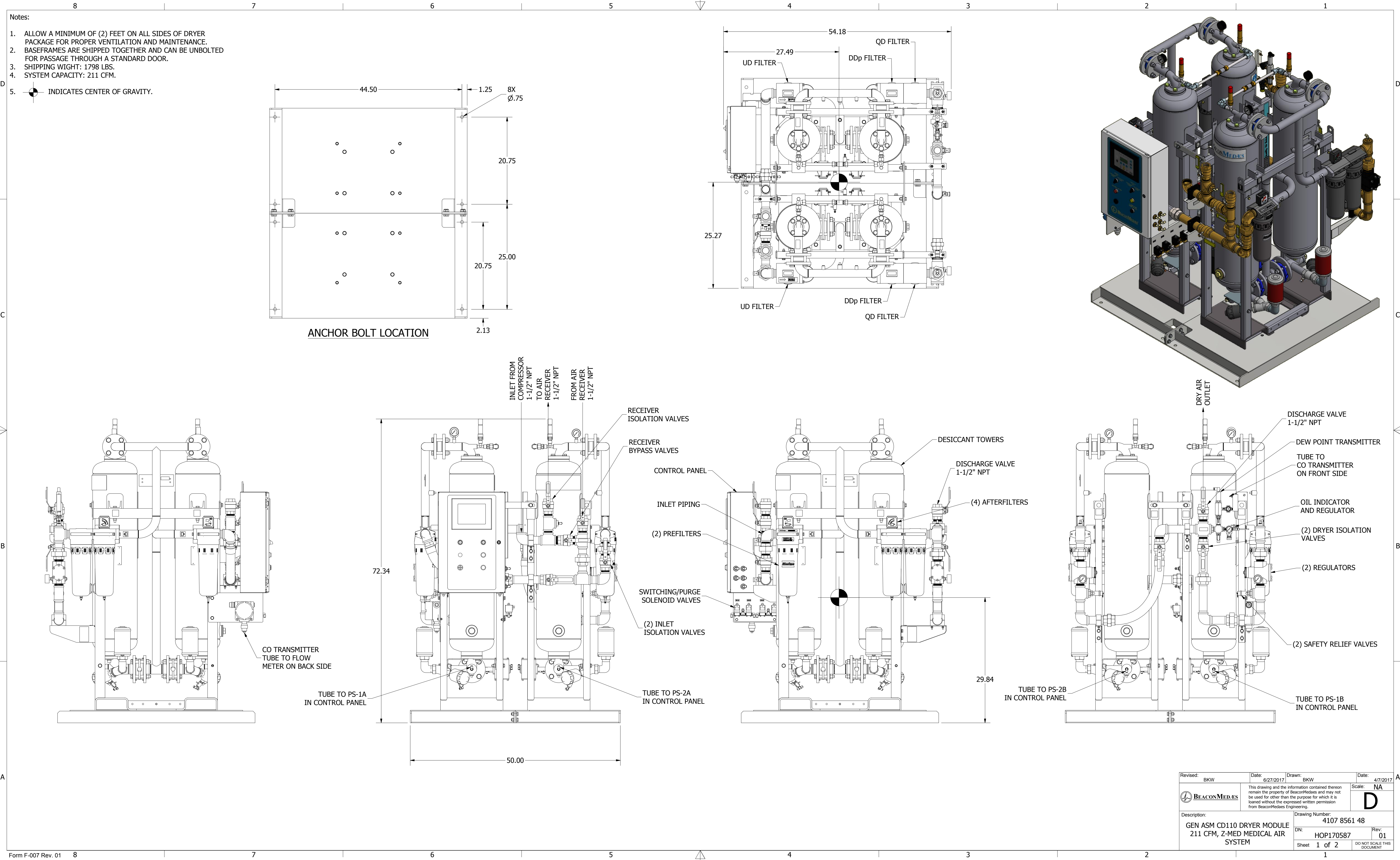
All materials supplied are in compliance with the requirements of the List of Prohibited Substances


2 Note:
 * With full open door

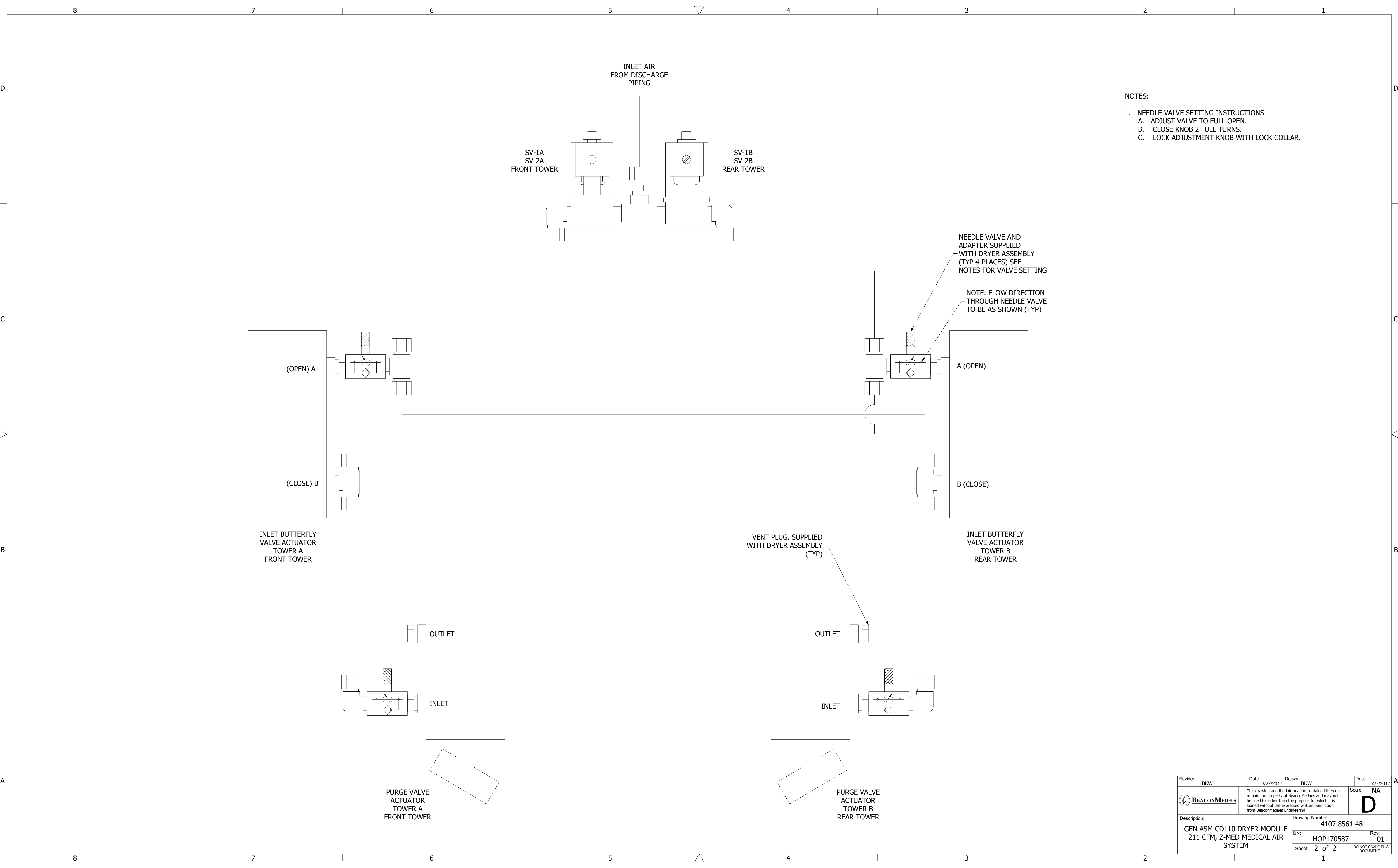
9820577300	02.10
Parent 3D model	Ed. Version 3D

Tolerances, if not indicated, according to:			
ATLAS COPCO STANDARD CLASS			
Name	DIMENS.		ZR37-55VSD+MED
Material	NOT APPLICABLE		1102 K / 3
Treatment	Not Applicable		INV
Scale	1:10	Family	A/Compare
Drawn by	sraman	Blank nr.	Replaces
Version Drwg	02.11	Blank wt.	0 Kg
Des checked.	Prod checked.	Approved.	Date 2008-01-22
9820577300			Sheet 1 / 1

Approved




Revised: BKW	Date: 6/27/2017	Drawn: BKW	Date: 4/7/2017
 BEACONMEDAES		This drawing and the information contained therein remain the property of BeaconMedaes and may not be used for other than the purpose for which it is loaned without the expressed written permission from BeaconMedaes Engineering.	
Description: GEN ASM CD110 DRYER MODULE 211 CFM, Z-MED MEDICAL AIR SYSTEM		Drawing Number: 4107 8561 48	
DN: HOP170587		Rev: 01	
Sheet 1 of 2		DO NOT SCALE THIS DOCUMENT	

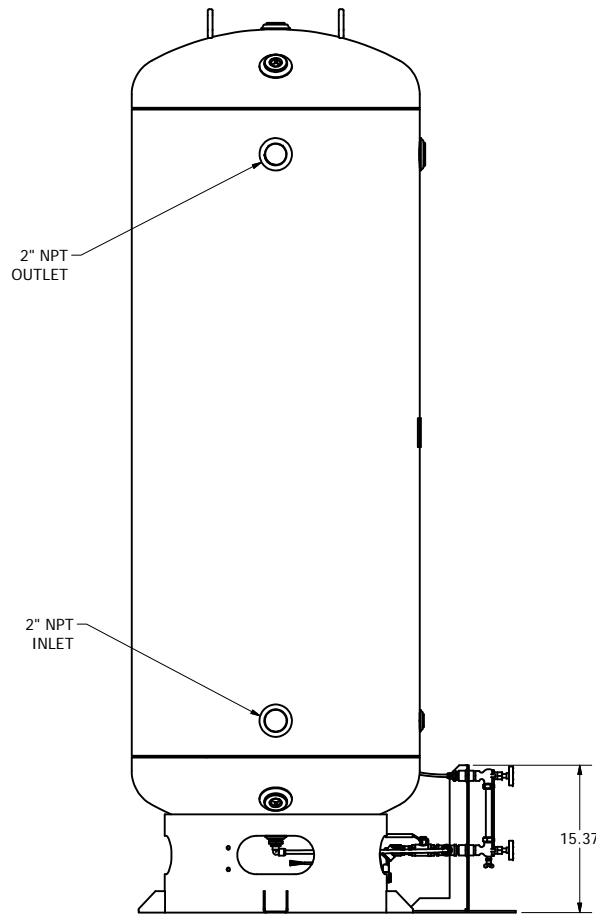
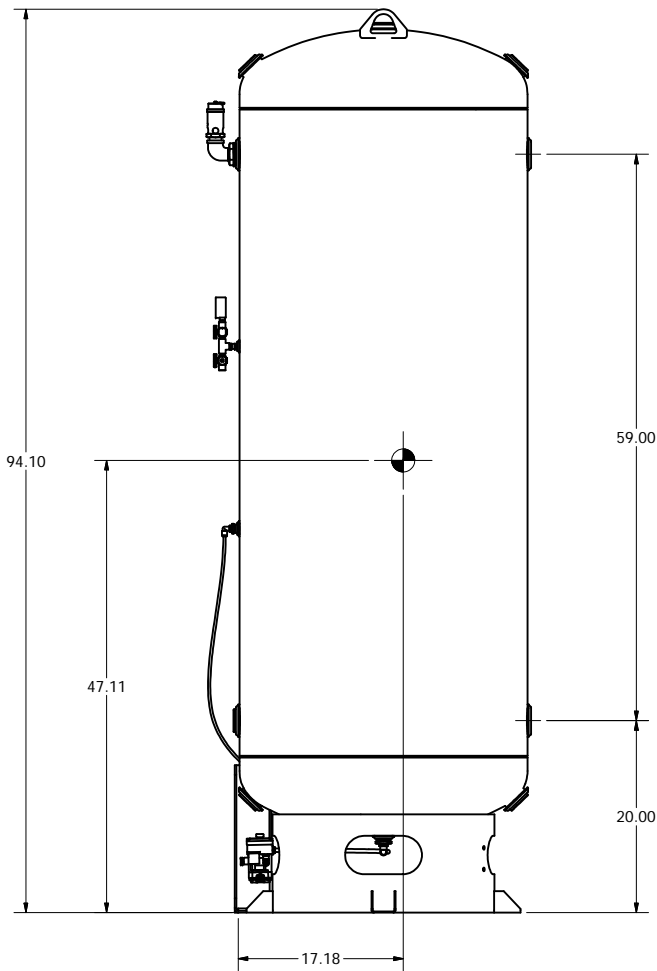
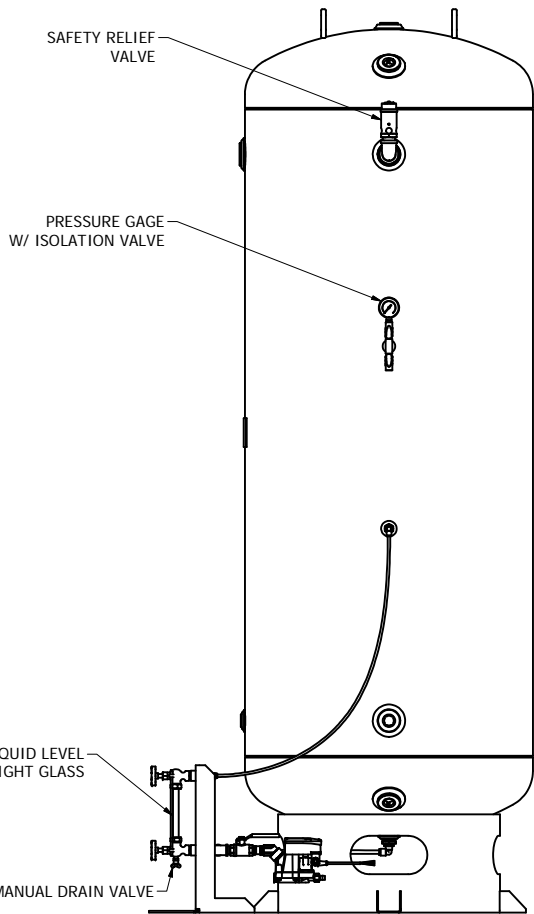
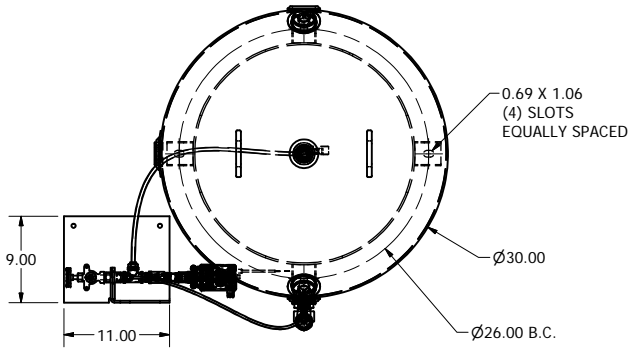



- NOTES:
- NEEDLE VALVE SETTING INSTRUCTIONS
 - ADJUST VALVE TO FULL OPEN.
 - CLOSE KNOB 2 FULL TURNS.
 - LOCK ADJUSTMENT KNOB WITH LOCK COLLAR.

Revised: BKW	Date: 6/27/2017	Drawn: BKW	Date: 4/7/2017
	This drawing and the information contained therein remain the property of BeaconMedaes and may not be used for other than the purpose for which it is loaned without the expressed written permission from BeaconMedaes Engineering.		Scale: NA
			D
Description: GEN ASM CD110 DRYER MODULE 211 CFM, Z-MED MEDICAL AIR SYSTEM		Drawing Number: 4107 8561 48	
		DN: HOP170587	Rev: 01
		Sheet 2 of 2	DO NOT SCALE THIS DOCUMENT

Notes:

1. ASME CODE CONSTRUCTION.
2. DESIGN PRESSURE: 200 PSI AT 400°F.
3. NATION BOARD REGISTERED.
4. ALL OPENINGS ARE NPT THREADED.
5. WEIGHT: 520 LBS (TANK) AND 22 LBS (SIGHT GLASS ASM).
6.  DENOTES CENTER OF GRAVITY.



Revised:	Date:	Drawn: MDB	Date: 7/8/2021
	This drawing and the information contained therein remain the property of BeaconMedes and may not be used for other than the purpose for which it is loaned without the expressed written permission from BeaconMedes Engineering.		Scale: 1/10
Description: AIR RECEIVER TANK - 240 GALLON W/STAND ALONE SIGHT GLASS & DRAIN		Drawing Number: 4107 0082 31	
Sheet 1 of 1		DN: HOP211010	Rev: 00
		DO NOT SCALE THIS DOCUMENT	