

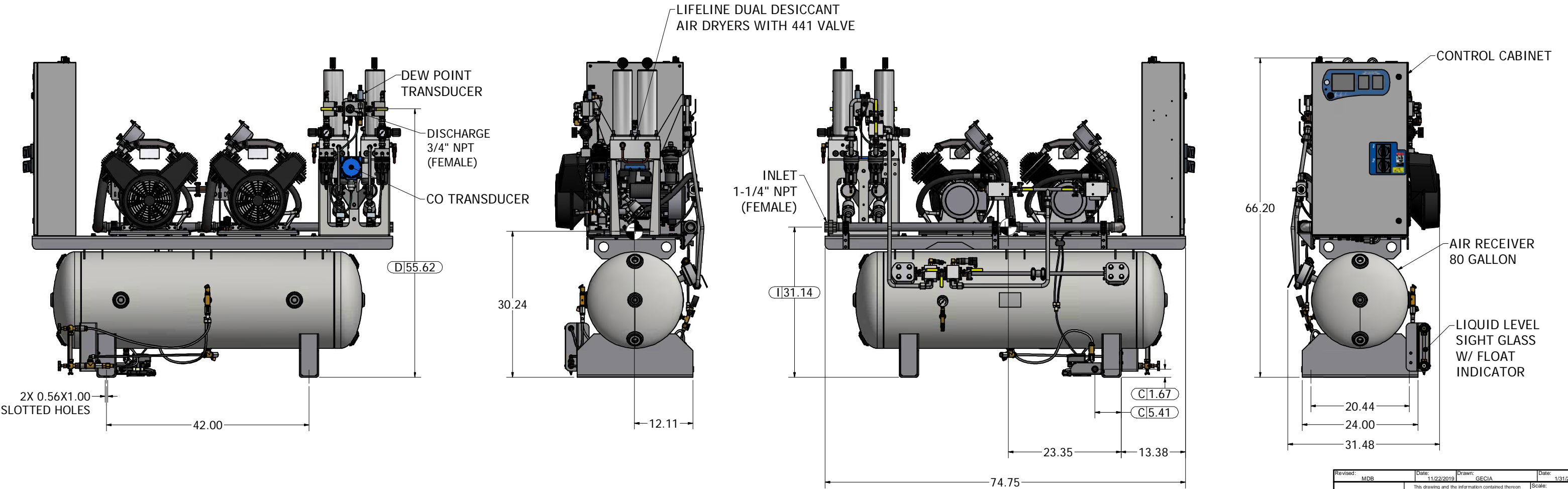
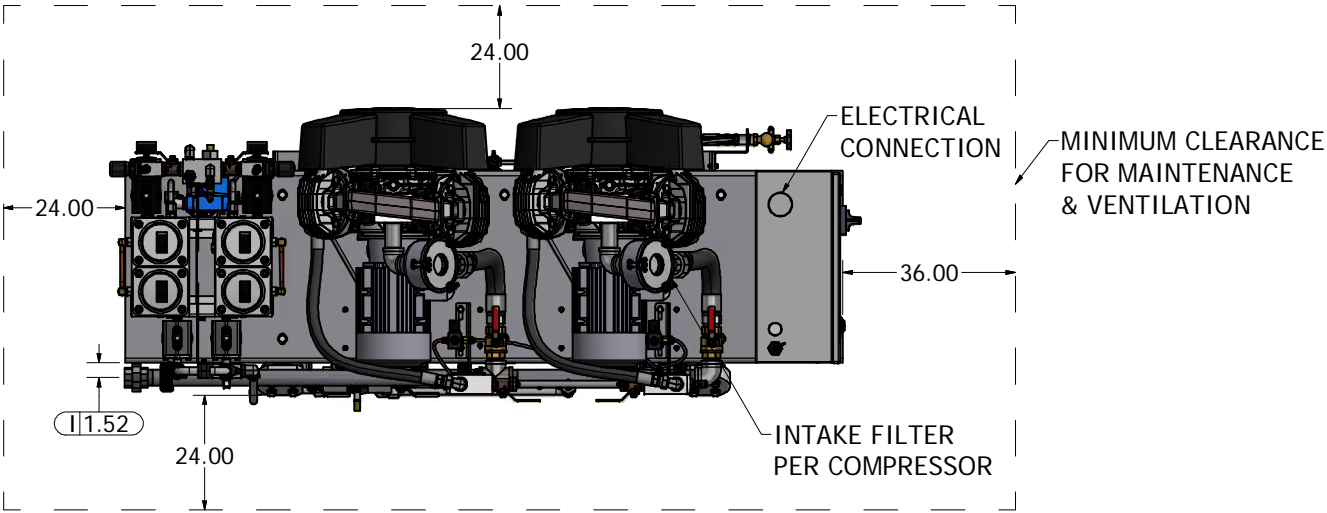



NOTES:

1. INLET AND DISCHARGE CONNECTIONS HAVE INTEGRATED FLEX HOSE DESIGN.
2. SYSTEM WEIGHT: 1001 LBS
3.  INDICATES LIFTING POINTS
4.  DENOTES CENTER OF GRAVITY

| SYSTEM CONNECTIONS | |
|--------------------|---------------------------|
| ID | DESCRIPTION |
| I | INLET LOCATION |
| D | DISCHARGE LOCATION |
| C | CONDENSATE DRAIN LOCATION |



| | | | |
|---|------------------|----------------------------|-----------------|
| Revised: MDB | Date: 11/22/2019 | Drawn: GECIA | Date: 1/31/2012 |
|  | | Scale: D | |
| Description: DWG GEN ASM 3.5HP DX 80G RECIP HTM | | Part Number: 4107 8531 45 | |
| DN: BM191292 | | Rev: 02 | |
| Sheet 1 of 1 | | DO NOT SCALE THIS DOCUMENT | |