

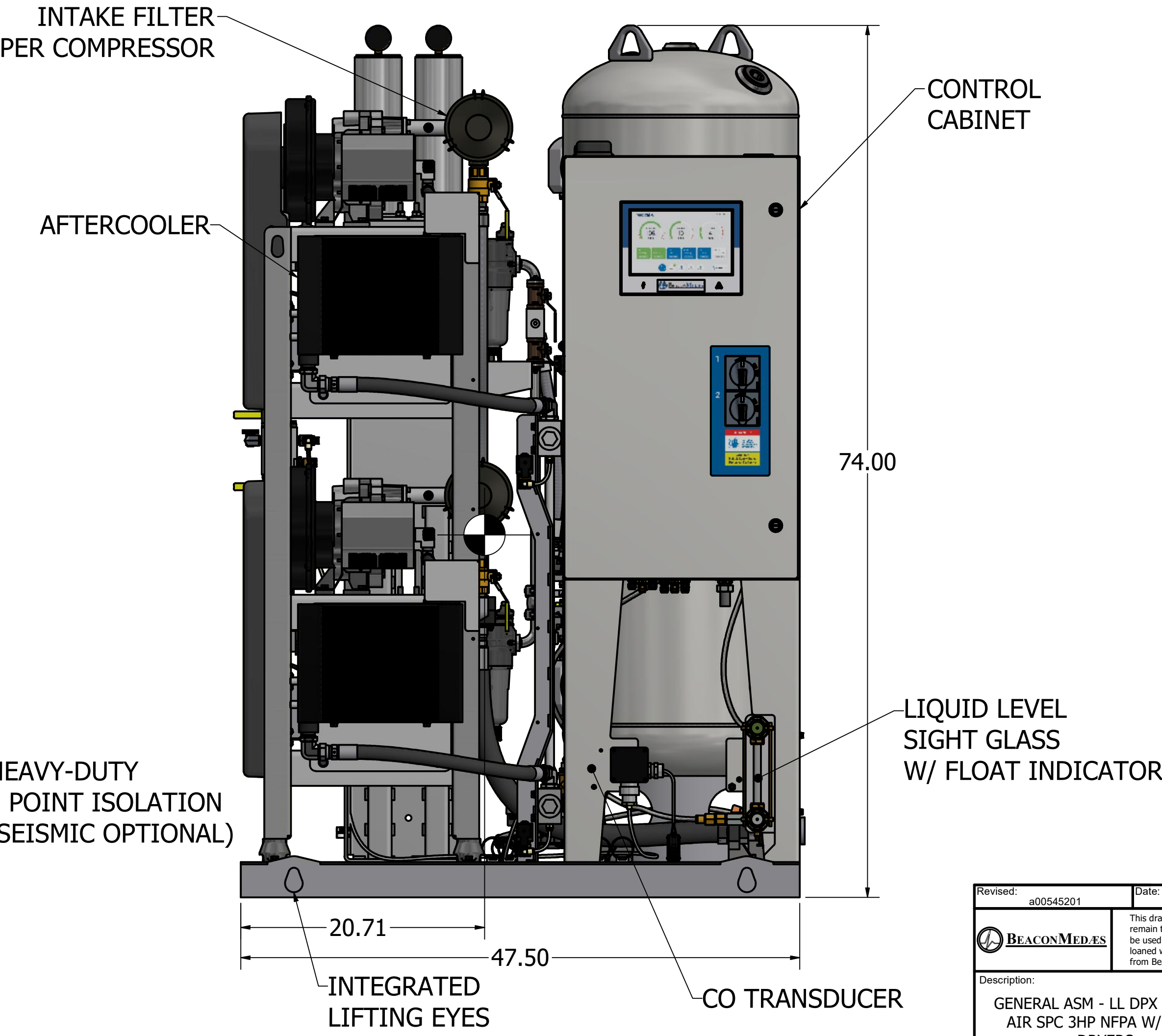
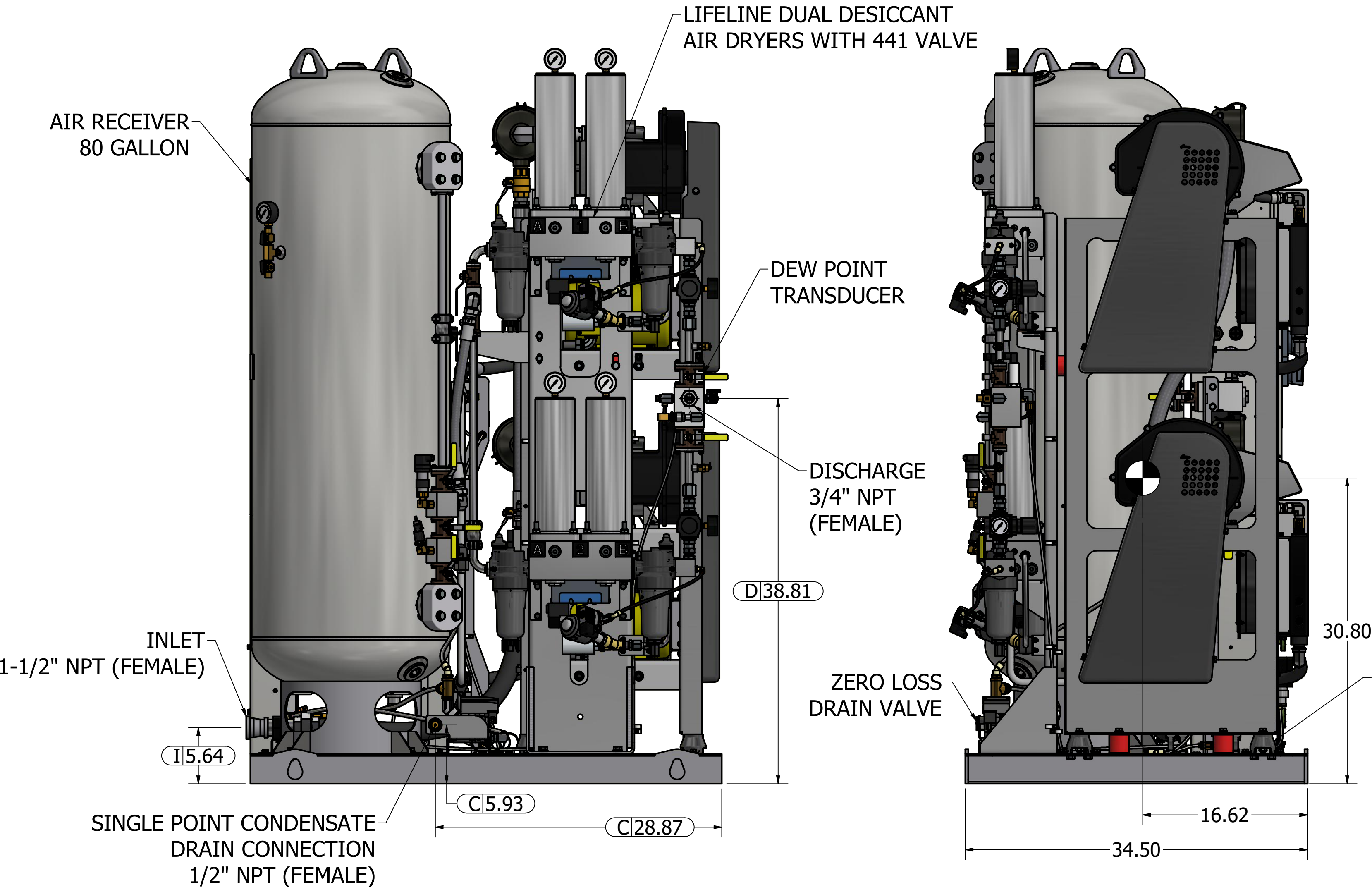
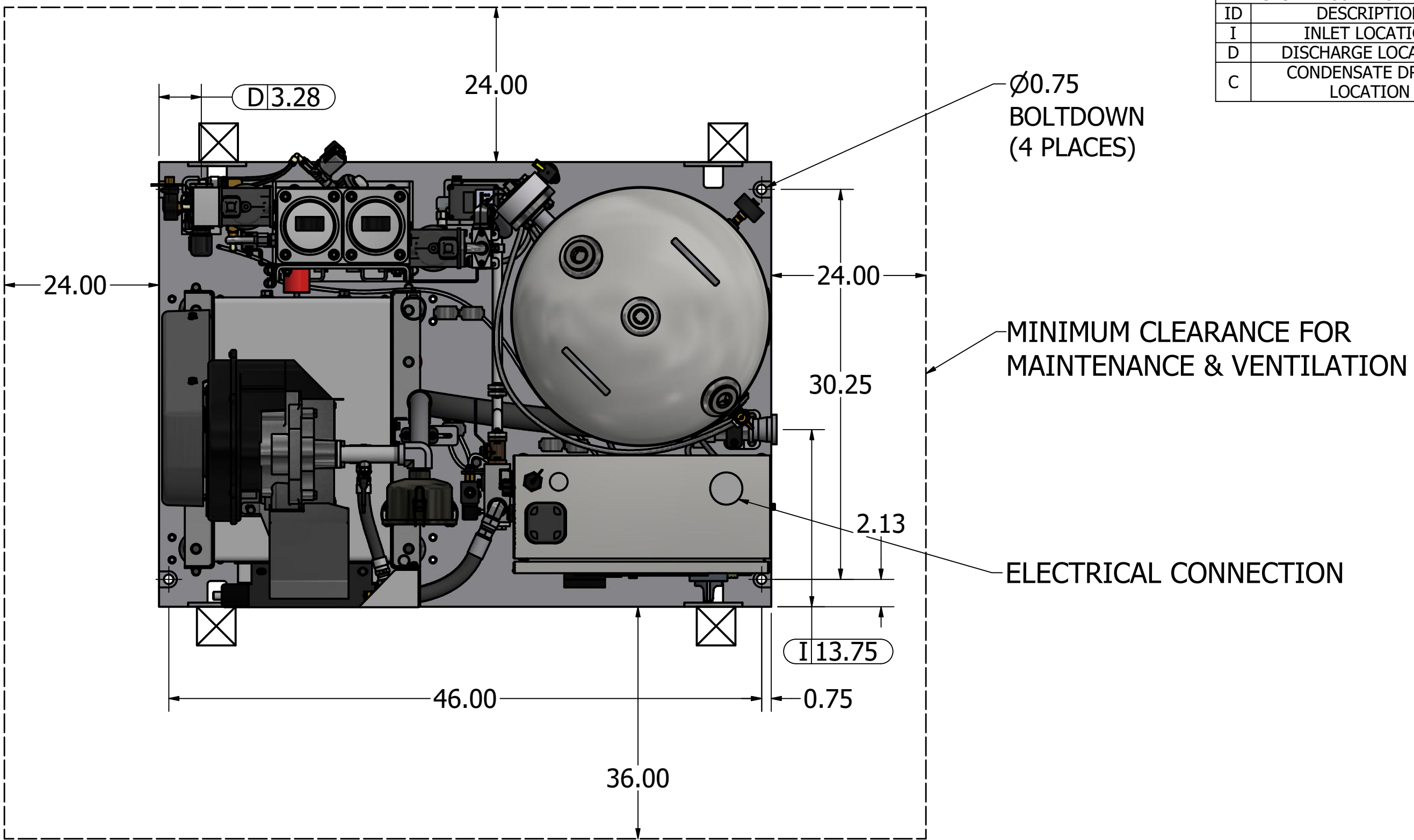



Notes:

1. INLET AND DISCHARGE CONNECTIONS HAVE INTEGRATED FLEX HOSE DESIGN.
2. SYSTEM WEIGHT: 1206 LBS
3.  INDICATES LIFTING POINTS
4.  DENOTES CENTER OF GRAVITY

SYSTEM CONNECTIONS	
ID	DESCRIPTION
I	INLET LOCATION
D	DISCHARGE LOCATION
C	CONDENSATE DRAIN LOCATION



Revised: a00545201	Date: 3/14/2023	Drawn: JDY	Date: 11/3/2009
		This drawing and the information contained therein remain the property of BeaconMedaes and may not be used for other than the purpose for which it is loaned without the expressed written permission from BeaconMedaes Engineering.	
Description: GENERAL ASM - LL DPX SCROLL AIR SPC 3HP NFPA W/ DESC DRYERS		Part Number: 4107 8511 44	
DN: HOP230837		Rev: 04	
Sheet 1 of 1		DO NOT SCALE THIS DOCUMENT	