

Notes:

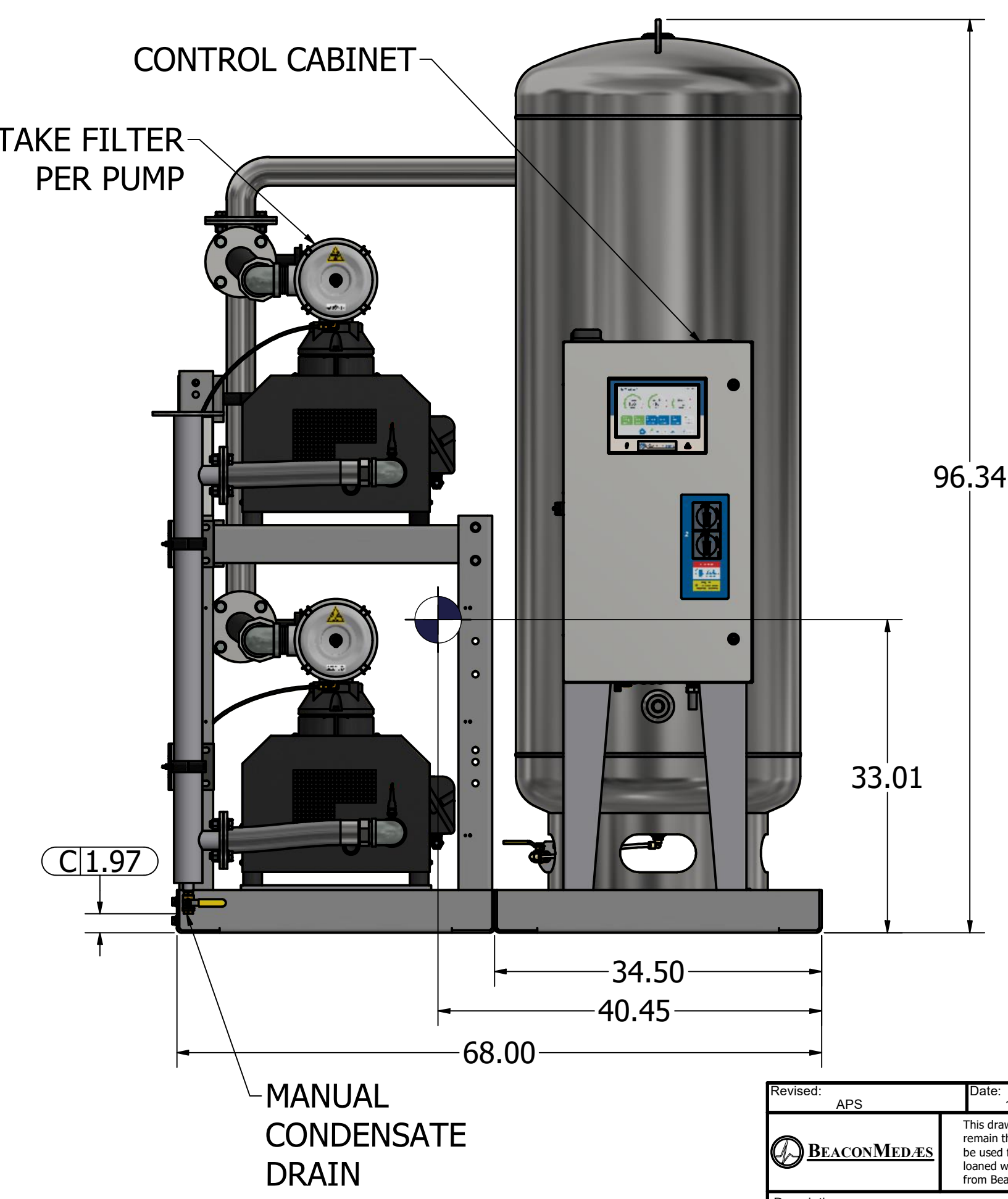
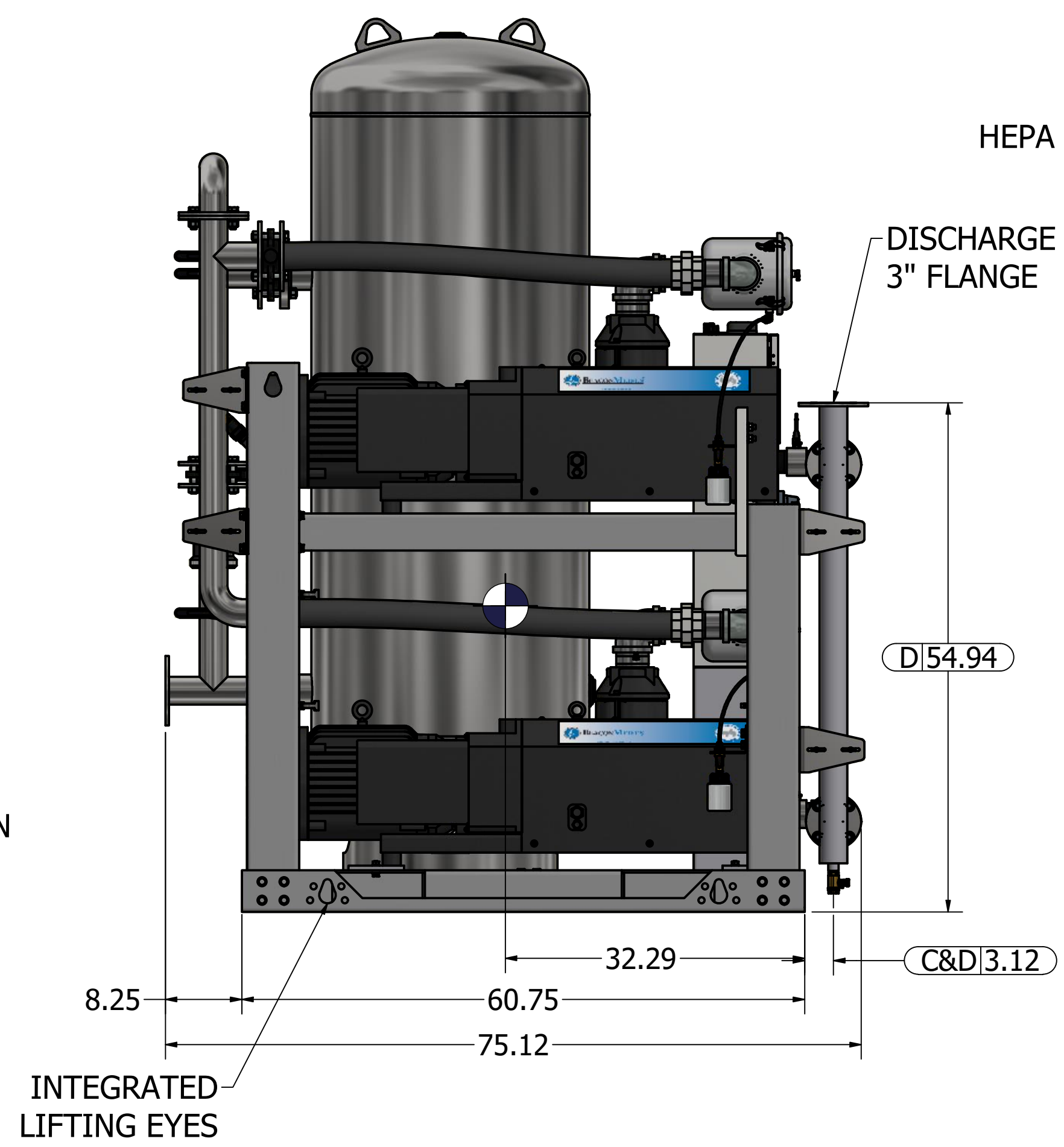
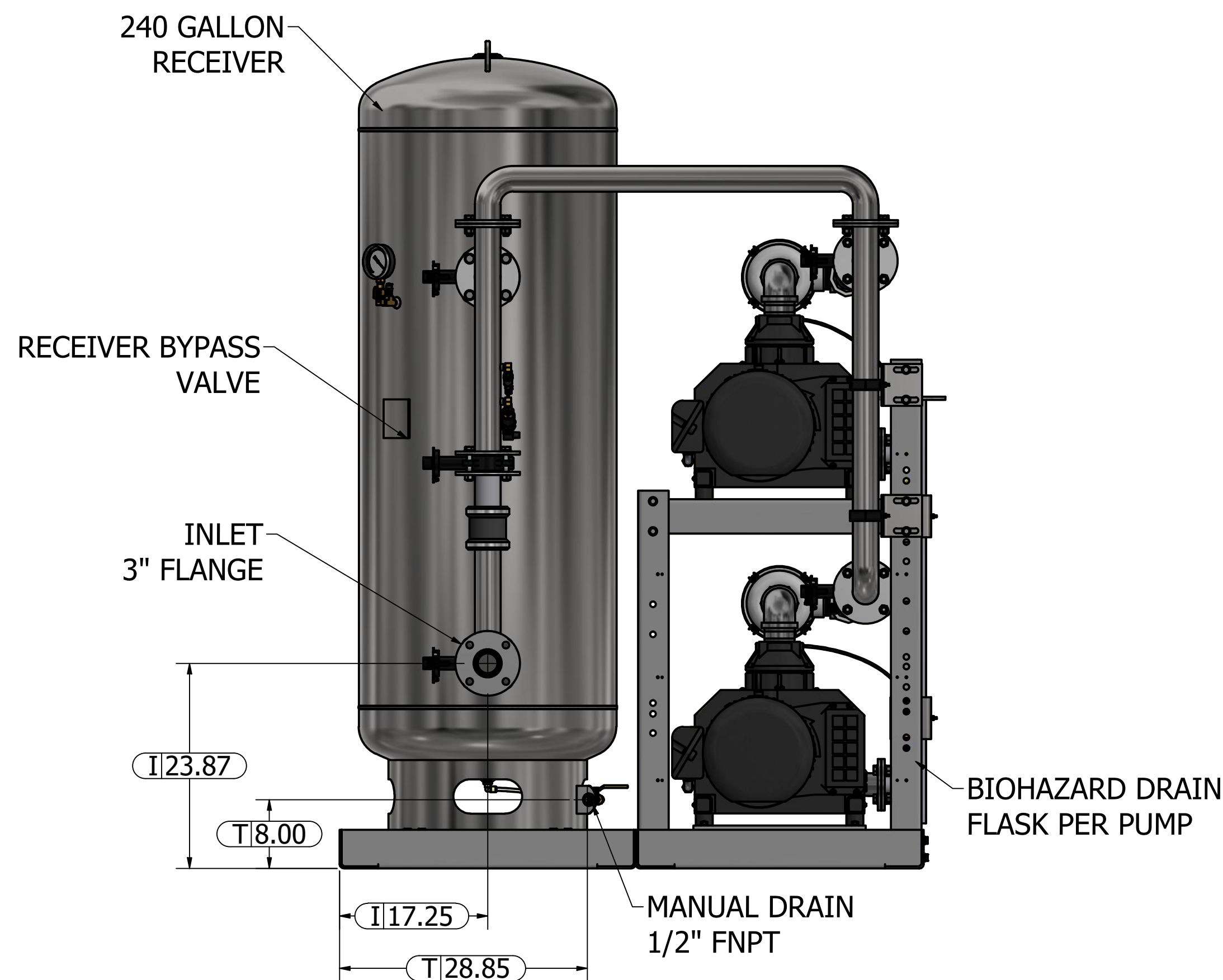
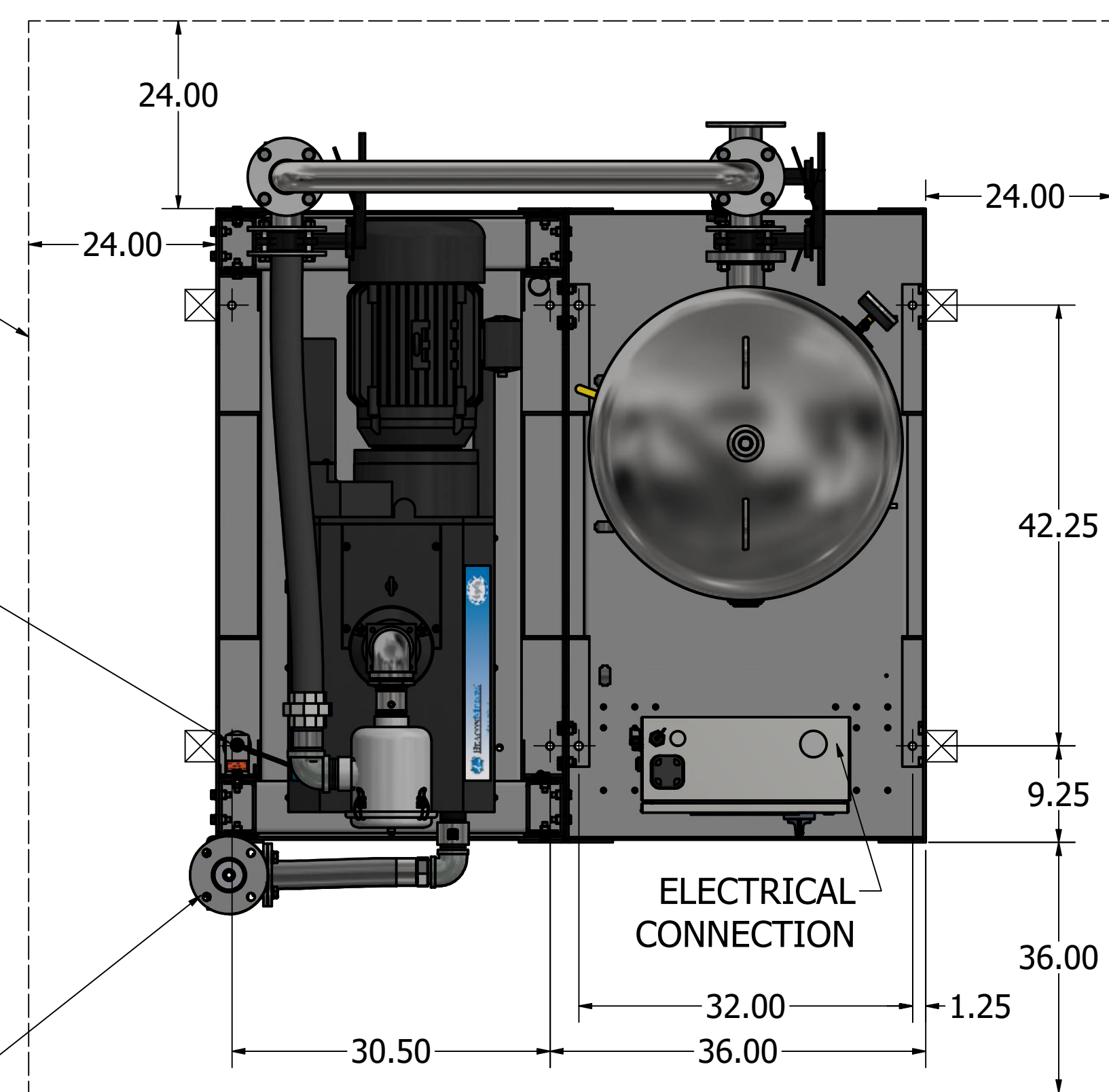
1. DISCHARGE MUFFLER WILL BE SHIPPED LOOSE.
2. SYSTEM WEIGHT: 3,342 LBS.
3. ☒ INDICATES LIFTING POINT.
4. ● DENOTES CENTER OF GRAVITY.

SYSTEM CONNECTIONS	
ID	DESCRIPTION
I	INLET LOCATION
D	DISCHARGE LOCATION
T	TANK DRAIN LOCATION
C	CONDENSATE DRAIN LOCATION

MINIMUM CLEARANCE FOR MAINTENANCE & VENTILATION

Ø0.75 BOLTDOWN (8 PLACES)

REMOVE INTAKE MANIFOLD BEFORE LIFTING



Revised: APS	Date: 1/18/2023	Drawn: JWO	Date: 2/10/2014
		This drawing and the information contained therein remain the property of BeaconMedaes and may not be used for other than the purpose for which it is loaned without the expressed written permission from BeaconMedaes Engineering.	
Description: GENERAL ASSEMBLY 15HP DX CLAW VAC SPC 240G RECEIVER		Part Number: 4107 8549 13	Scale: D
DN: HOP220669	Rev: 03	Sheet 1 of 1	DO NOT SCALE THIS DOCUMENT