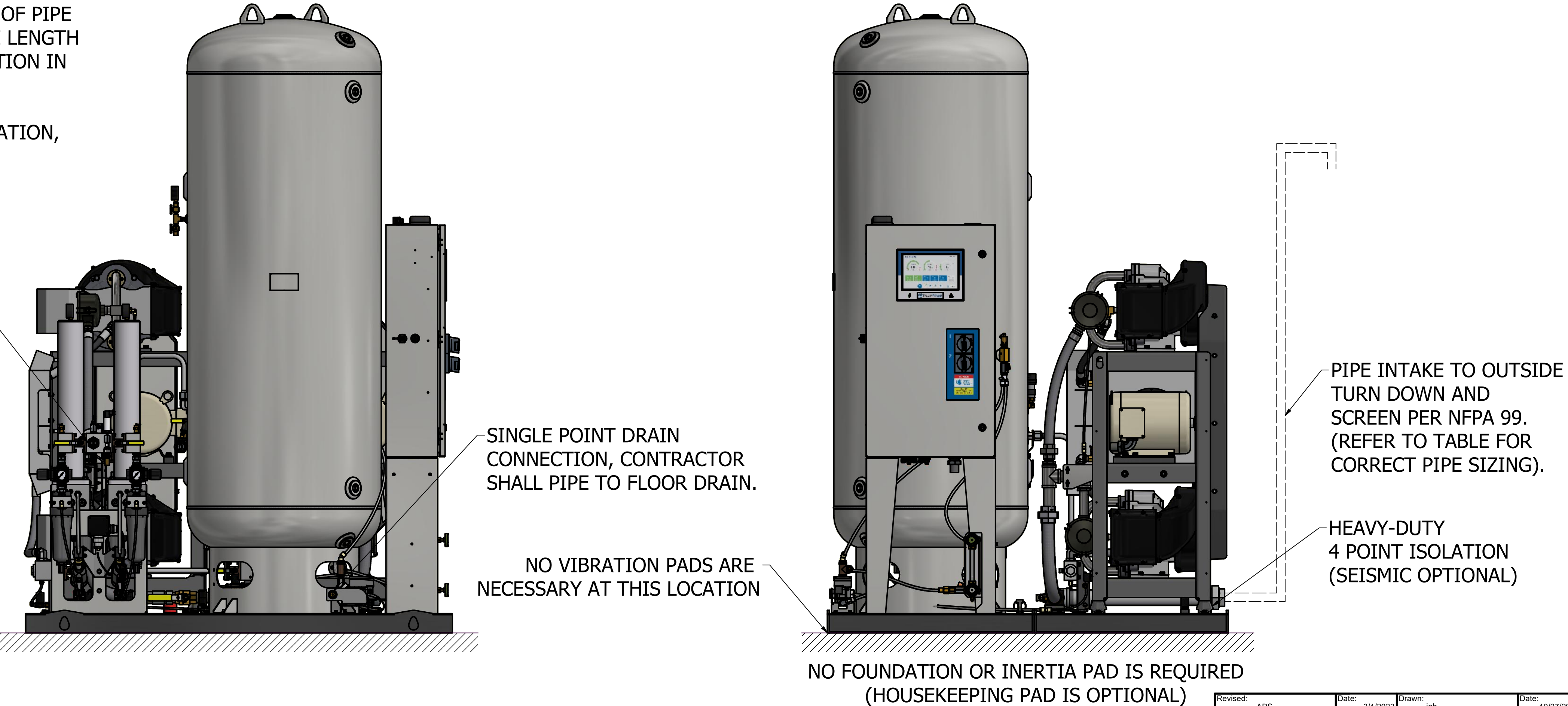
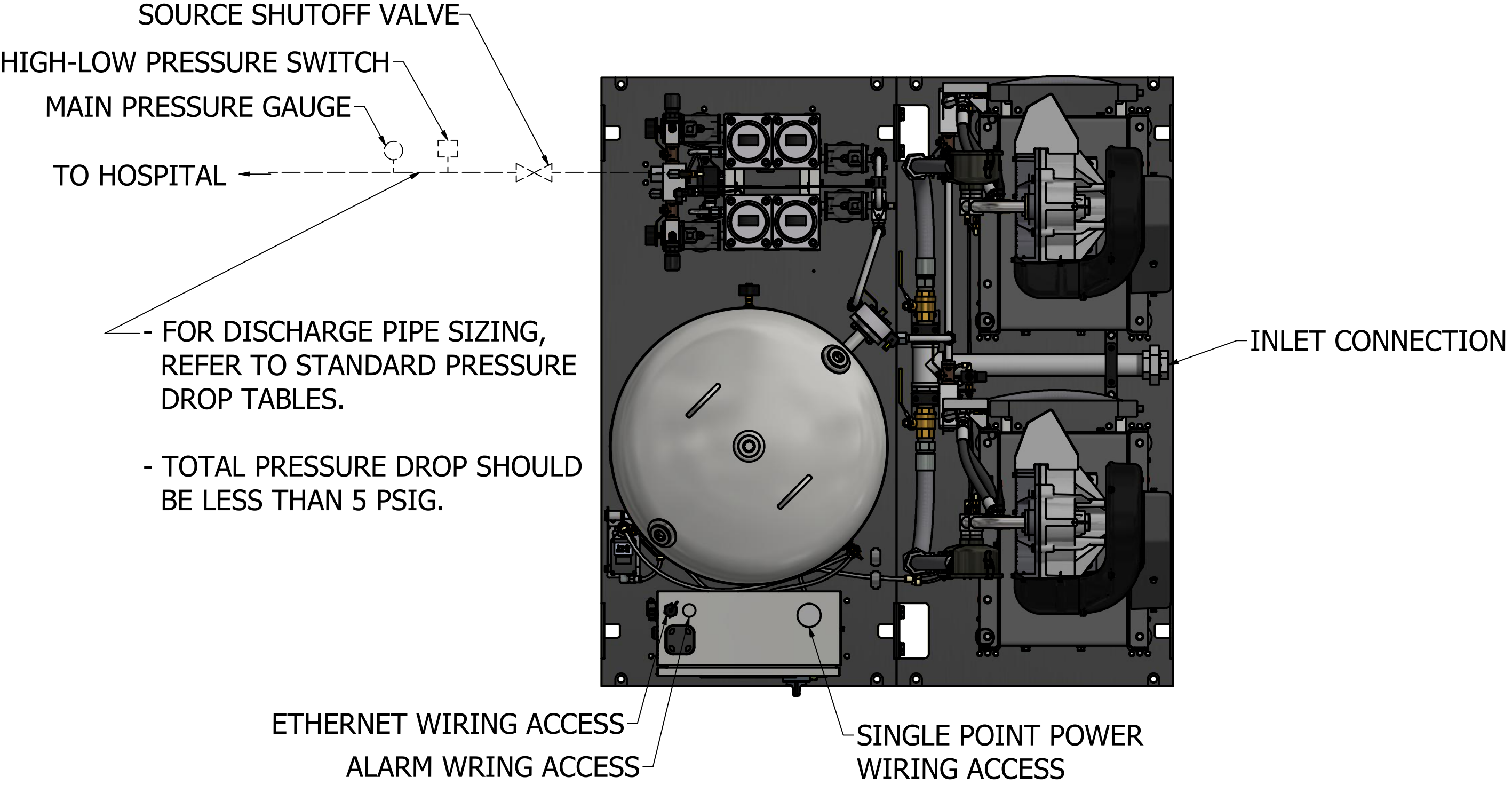


GENERAL NOTES:

1. ALL INTERCONNECTING PIPING, ACCESSORIES, AND PIPE FITTINGS SHALL BE INSTALLED BY THE CONTRACTOR.
2. ALL PIPING SHALL BE HARD-DRAWN SEAMLESS TYPE "K" OR "L" COPPER TUBING CONFORMING TO ASTM DESIGNATION B-819.
3. ALL PIPING SHALL BE INSTALLED IN ACCORDANCE WITH NFPA 99. PIPING LAYOUT IS DIAGRAMMATIC ONLY. FINAL ARRANGEMENT WILL BE SITE SPECIFIC. CONTRACTOR WILL BE RESPONSIBLE FOR FIELD VERIFICATION AND COORDINATING ACTUAL LOCATION WITH ALL OTHER TRADES.
4. CONTRACTOR SHALL VERIFY MOTOR VOLTAGE, PHASE, AND AMP RATINGS BEFORE STARTING ELECTRICAL INSTALLATION; AND MAKE CERTAIN THE VOLTAGE SUPPLIED BY THE HOSPITAL IS THE SAME.
5. THE ROOM REQUIRES DEDICATED MECHANICAL VENTILATION WITH AN ALLOWABLE TEMPERATURE VARIANCE OF 40° TO 105°. (FOR HIGHER AMBIENTS, CONSULT FACTORY).
6. ELECTRICAL POWER SHOULD BE SUPPLIED FROM THE EQUIPMENT SYSTEM BRANCH OF THE ESSENTIAL ELECTICAL SYSTEM (EMERGENCY POWER).
7. EQUIPMENT, INSTALLATION, AND TESTING OF THE MEDICAL AIR SYSTEM SHALL COMPLY WITH NFPA 99 AND ALL STATE AND LOCAL CODES OR ORDINANCES.
8. WHEN DETERMINING THE TOTAL PIPE LENGTH, ADD ALL THE STRAIGHT LENGTHS OF PIPE TOGETHER IN ADDITION TO THE NUMBER OF ELBOWS TIMES THE EFFECTIVE PIPE LENGTH FOR THAT PIPE SIZE. (SEE EQUIVALENT PIPE LENGTH TABLE & EXAMPLE CALCULATION IN O & M MANUAL)
9. ALLOW 36 INCHES IN FRONT OF CONTROL PANEL FOR MAINTENANCE AND VENTILATION, ALL OTHER SIDES REQUIRE 24 INCHES OF CLEARANCE.

INTAKE PIPE SIZE TABLE (SEE NOTE 8)				
UNIT SIZE	PIPE LENGTH			
	0-25'	26'-150'	151'-350'	351'-500'
DPX 10	2.00" NPT	2.50" NPT	3.00" NPT	3.50" NPT
UNIT SIZE	PIPE LENGTH			
	0-75'	76'-150'	151'-350'	351'-500'
DPX 15	2.50" NPT	3.00" NPT	3.50" NPT	4.00" NPT
UNIT SIZE	PIPE LENGTH			
	0-50'	51'-150'	151'-300'	301'-500'
DPX 20	2.50" NPT	3.00" NPT	3.50" NPT	4.00" NPT

EFFECTIVE PIPE LENGTH FOR ELBOWS					
PIPE SIZE (IN)	2.00" NPT	2.50" NPT	3.00" NPT	3.50" NPT	4.00" NPT
EFF. PIPE LENGTH (FT)	4.9	6.4	7.9	9.4	10



Revised: APS	Date: 3/1/2023	Drawn: Jeb	Date: 10/27/2009
Description: INSTALLATION DIAGRAM 10-20HP DX SCROLL SPC		Part Number: 4107 8511 89	
Sheet 1 of 1		Rev: 04	