

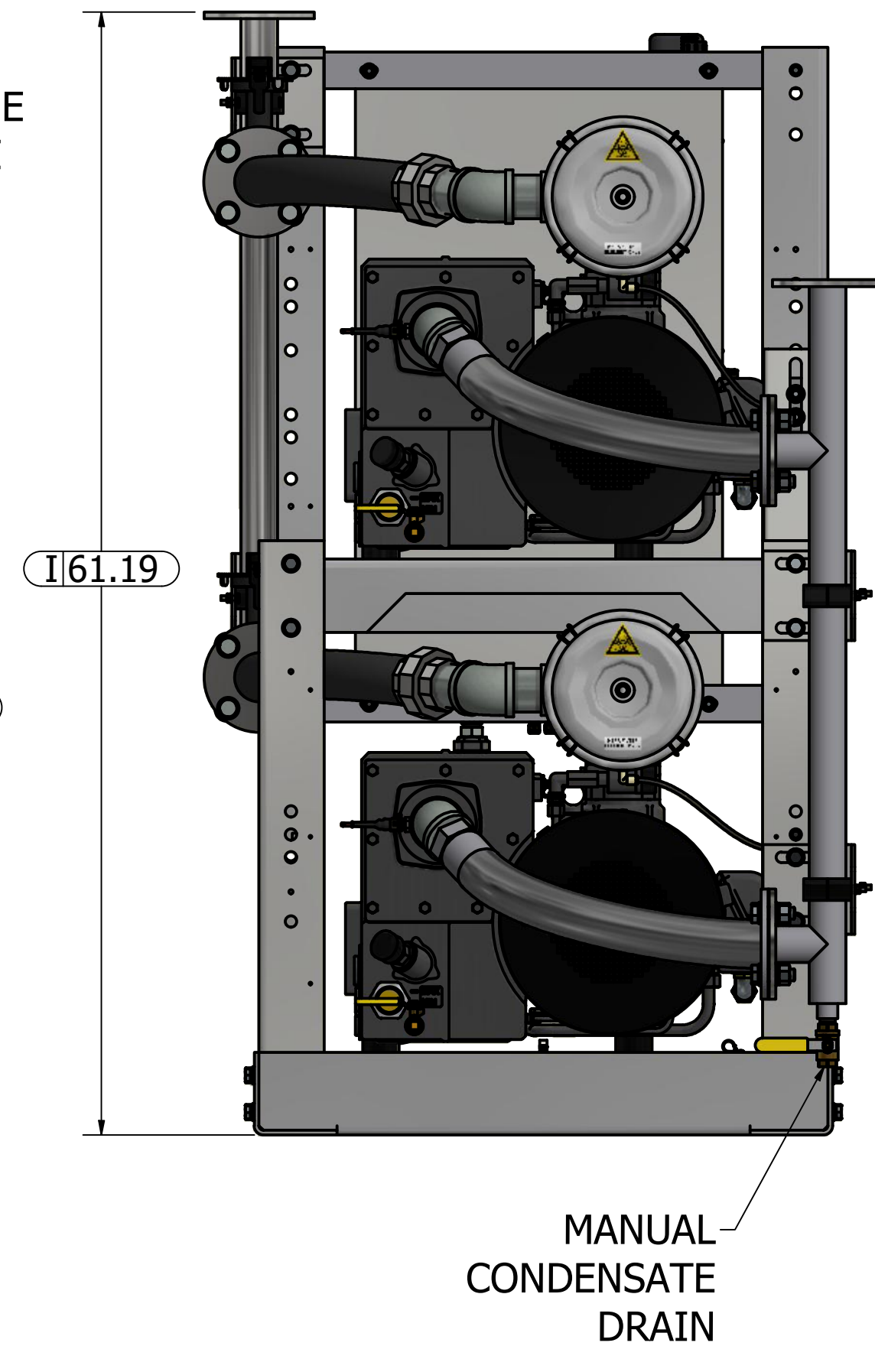
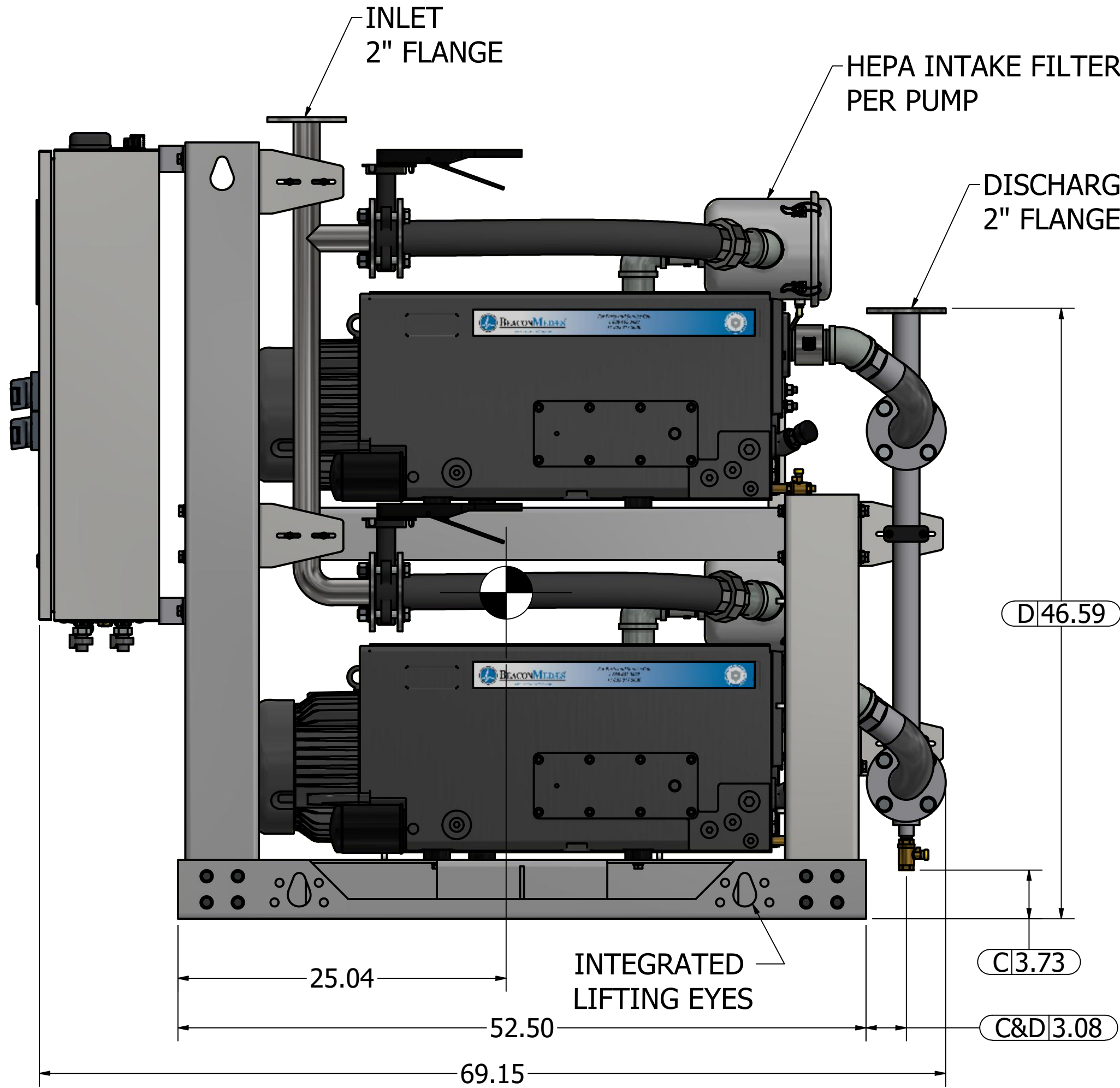
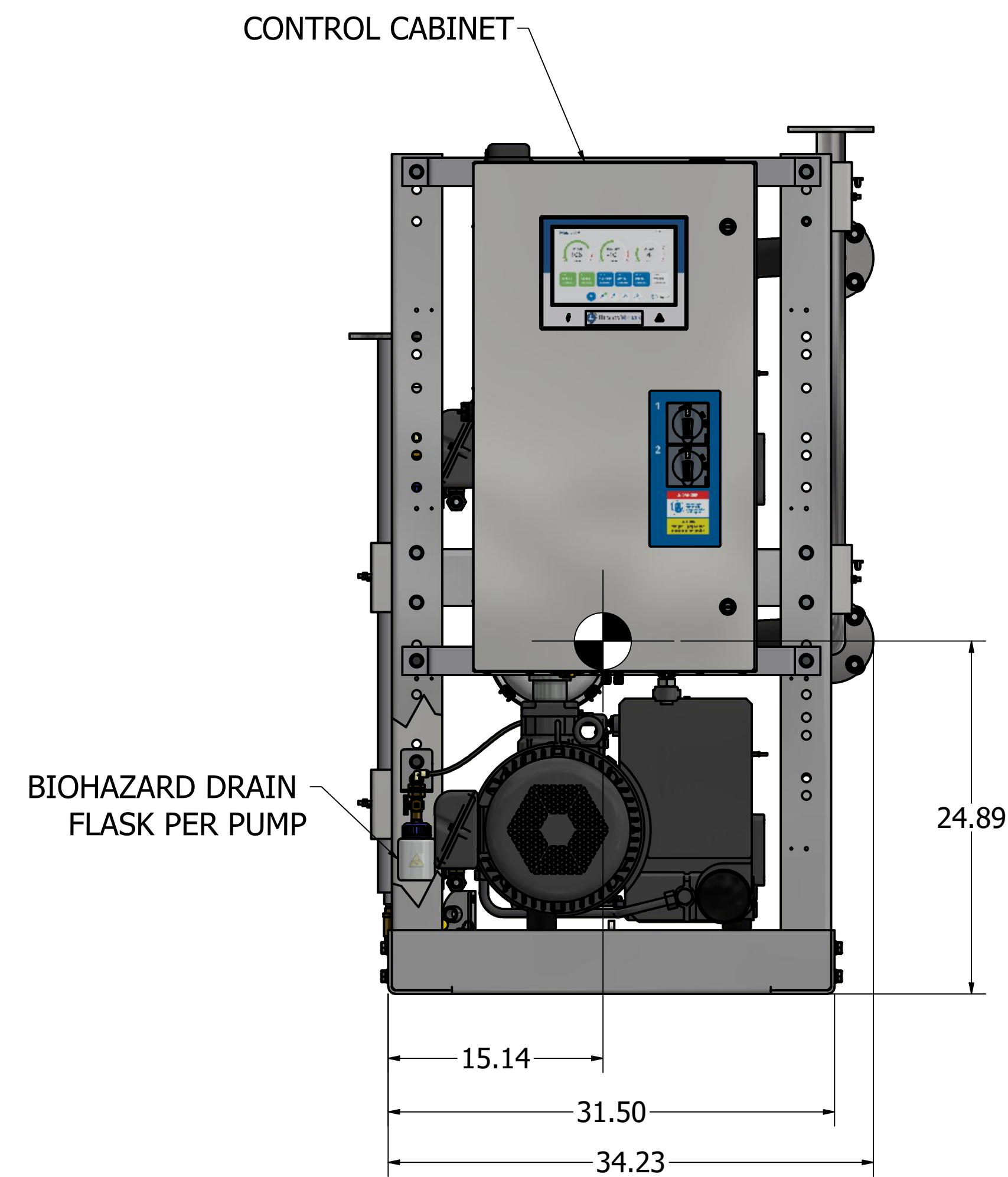
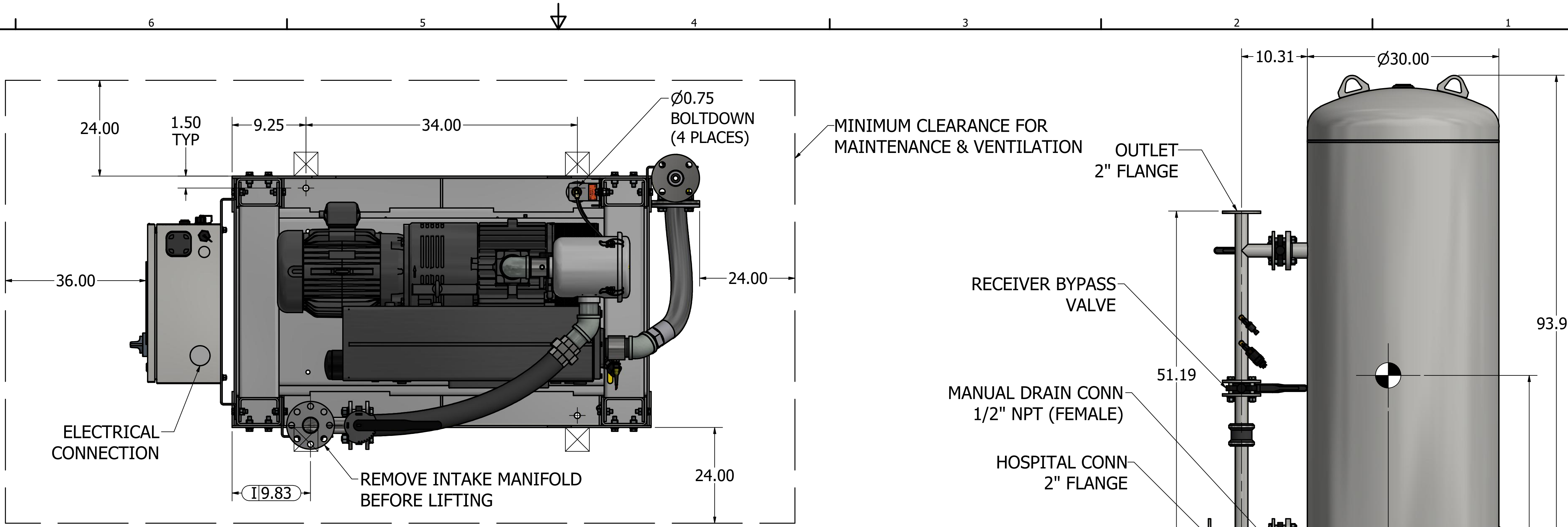



Notes:

1. DX MODULE WEIGHT: 1,873 LBS  
240G TANK WEIGHT: 693 LBS
2.  INDICATES LIFTING POINT.
3.  DENOTES CENTER OF GRAVITY.

SYSTEM CONNECTIONS	
ID	DESCRIPTION
I	INLET LOCATION
D	DISCHARGE LOCATION
C	CONDENSATE DRAIN LOCATION
T	TANK DRAIN



Revised: a00545201	Date: 2/14/2023	Drawn: USNKG	Date: 10/22/2010
	This drawing and the information contained therein remain the property of BeaconMedaes and may not be used for other than the purpose for which it is loaned without the expressed written permission from BeaconMedaes Engineering.		Scale: D
Description: GENERAL ASSEMBLY 10HP DX LUBE VAC MOD 240G RECEIVER		Part Number: 4107 8522 13	
Sheet 1 of 1		Rev: 03	