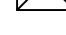

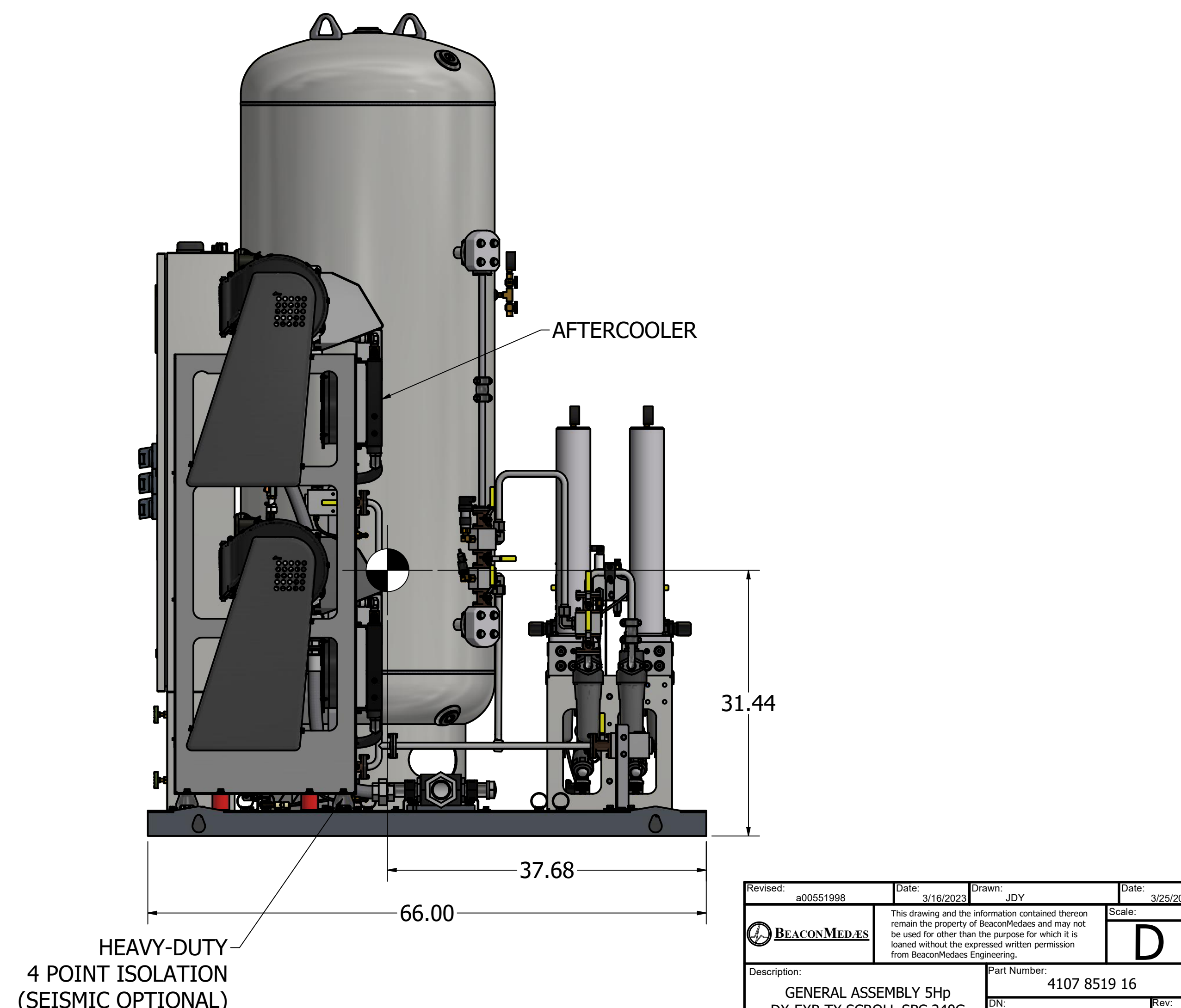
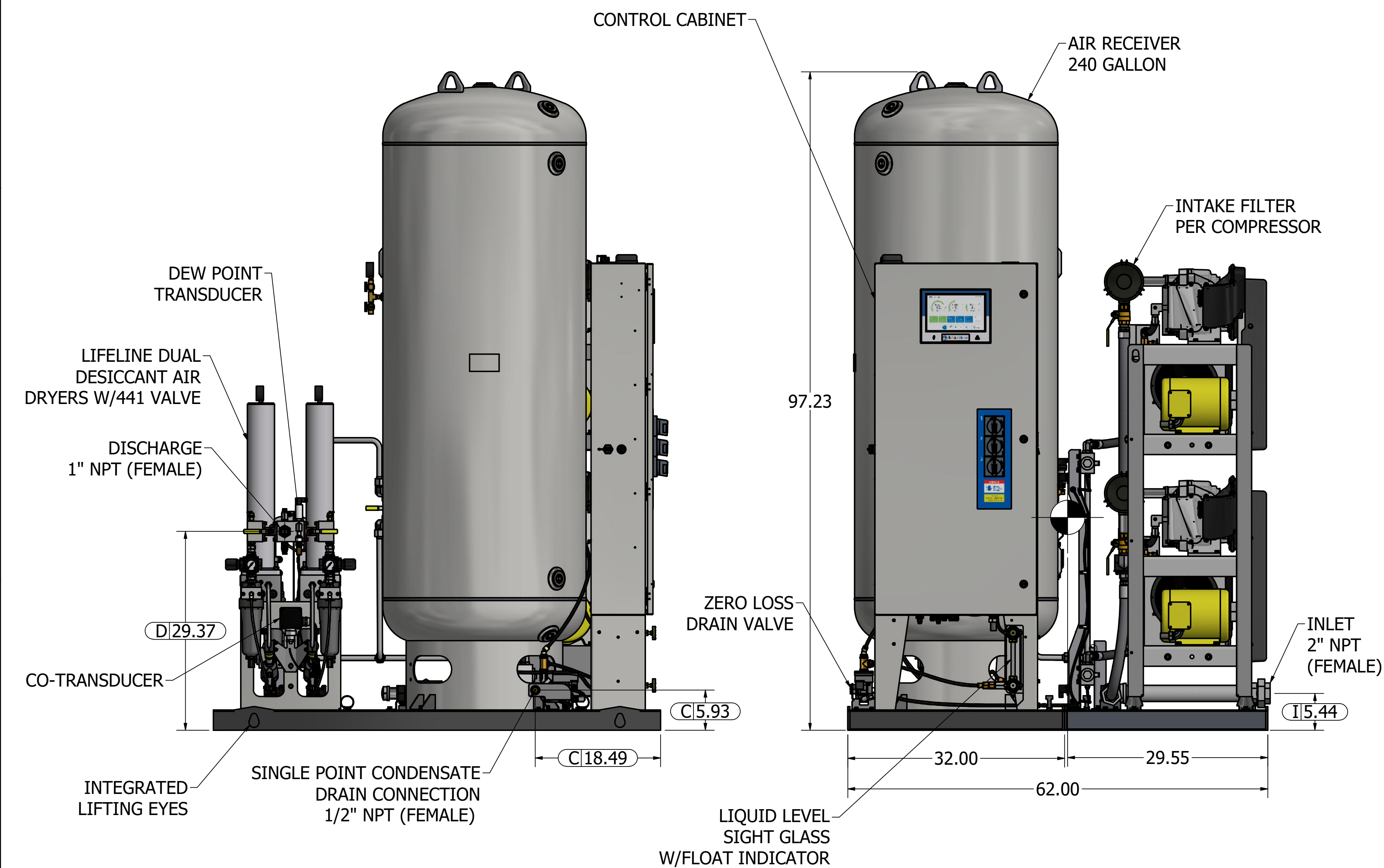
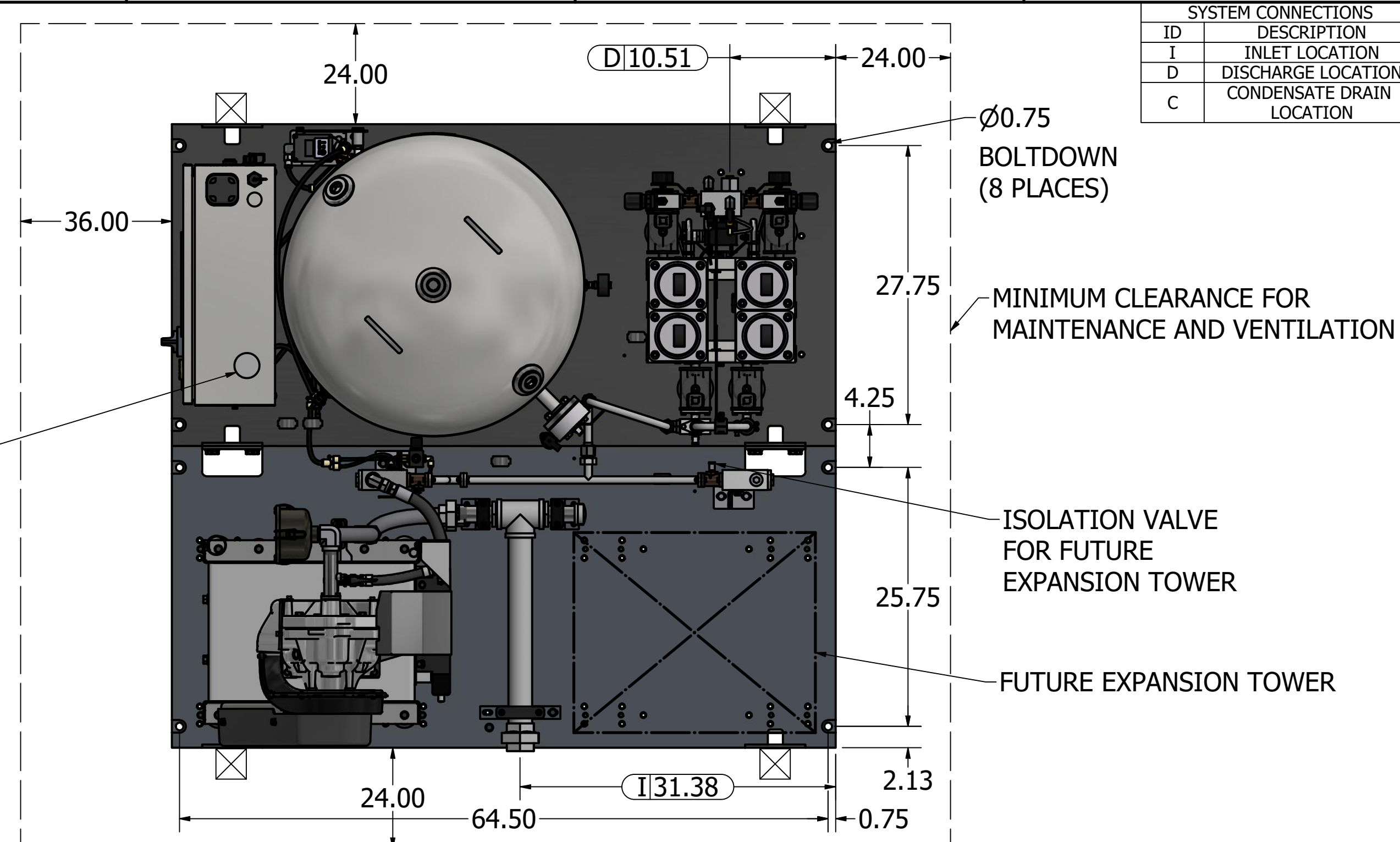



1. INLET AND DISCHARGE CONNECTIONS HAVE INTEGRATED FLEX HOSE DESIGN.
2. SYSTEM WEIGHT: 2163 LBS
(INCLUDES FUTURE EXPANSION TOWER)
3.  INDICATES LIFTING POINTS
4.  DENOTES CENTER OF GRAVITY
(INCLUDES FUTURE EXPANSION TOWER)

SYSTEM CONNECTIONS	
ID	DESCRIPTION
I	INLET LOCATION
D	DISCHARGE LOCATION
C	CONDENSATE DRAIN LOCATION



Revised:	a005511998	Date:	3/16/2023	Drawn:	JDY	Date:	3/25/2023
 BEACON MEDICS		This drawing and the information contained herein remain the property of BeaconMedics and may not be used for other than the purpose for which it is loaned without the expressed written permission from BeaconMedics Engineering.				Scale: D	
Description:		Part Number:		4107 8519 16			
GENERAL ASSEMBLY 5hp DX-EXP-TC SCROLL SPC 240G RECEIVER NFPA W/ DESC DRYER		DN: HOP230837		Rev: 05		DO NOT SCALE THIS DRAWING	
		Sheet 1 of 1					