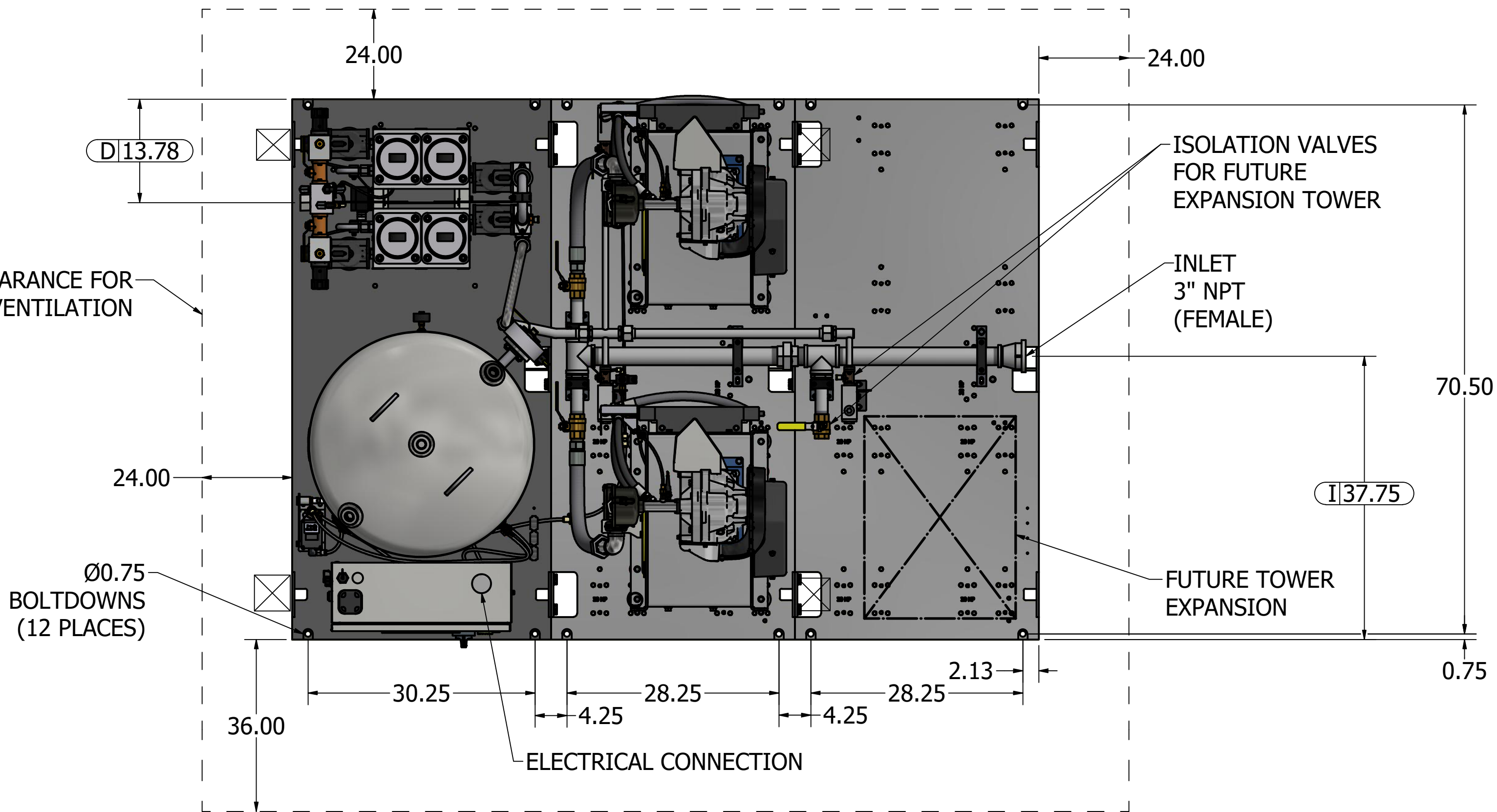


Notes:

1. INLET AND DISCHARGE CONNECTIONS HAVE INTEGRATED FLEX HOSE DESIGN.
2. SYSTEM WEIGHT: 3060 LBS (INCLUDES FUTURE EXPANSION TOWER)
3. ☒ INDICATES LIFTING POINTS
4. ● DENOTES CENTER OF GRAVITY (INCLUDES FUTURE EXPANSION TOWER)

SYSTEM CONNECTIONS	
ID	DESCRIPTION
C	CONDENSATE DRAIN LOCATION
I	INSERT LOCATION
D	DISCHARGE LOCATION

MINIMUM CLEARANCE FOR
MAINTENANCE & VENTILATION



AIR RECEIVER-
200 GALLON

LIFELINE DUAL DESICCANT
AIR DRYERS WITH 441 VALVE

DEW POINT
TRANSDUCER

DISCHARGE
1" NPT (FEMALE)

D134.83

CO TRANSDUCER

INTEGRATED
LIFTING EYES

SINGLE POINT CONDENSATE
DRAIN CONNECTION
1/2" NPT (FEMALE)

C18.49

C5.93

CONTROL CABINET

ZERO LOSS
DRAIN VALVE

LIQUID LEVEL
SIGHT GLASS
W/FLOAT INDICATOR

INTAKE FILTER
PER COMPRESSOR

99.50

51.00

32.50

32.50

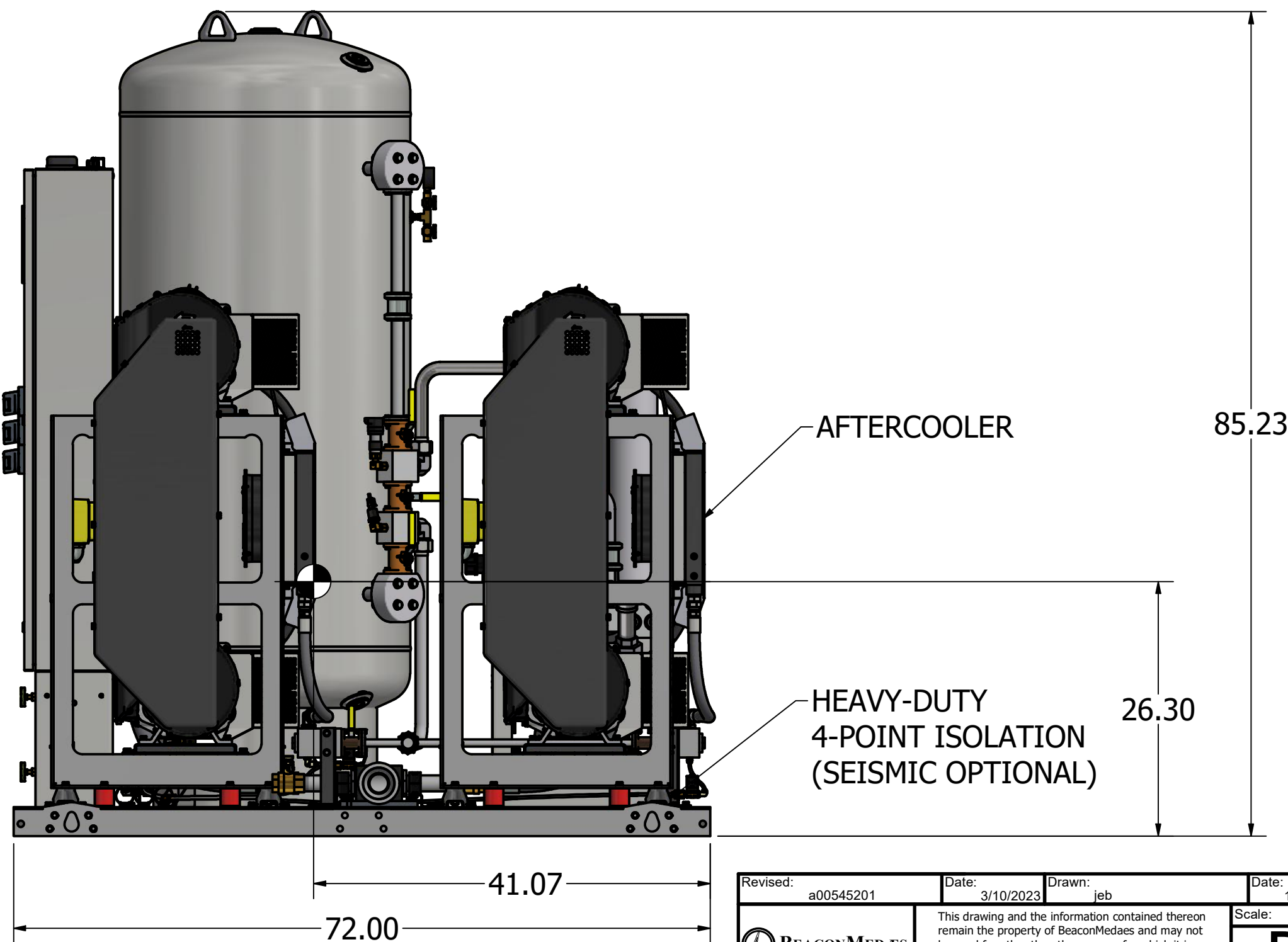
I15.46

AFTERCOOLER

HEAVY-DUTY
4-POINT ISOLATION
(SEISMIC OPTIONAL)

26.30

85.23



Revised: a00545201	Date: 3/10/2023	Drawn: Jeb	Date: 11/17/2009
BEACONMEDAES		This drawing and the information contained therein remain the property of BeaconMedaes and may not be used for other than the purpose for which it is loaned without the expressed written permission from BeaconMedaes Engineering.	
Description: GENERAL ASSEMBLY 10HP DX-EXP-TX SCROLL SPC 200G RECEIVER		Part Number: 4107 8511 75	
DN: HOP230837		Rev: 04	
Sheet 1 of 1		DO NOT SCALE THIS DOCUMENT	