

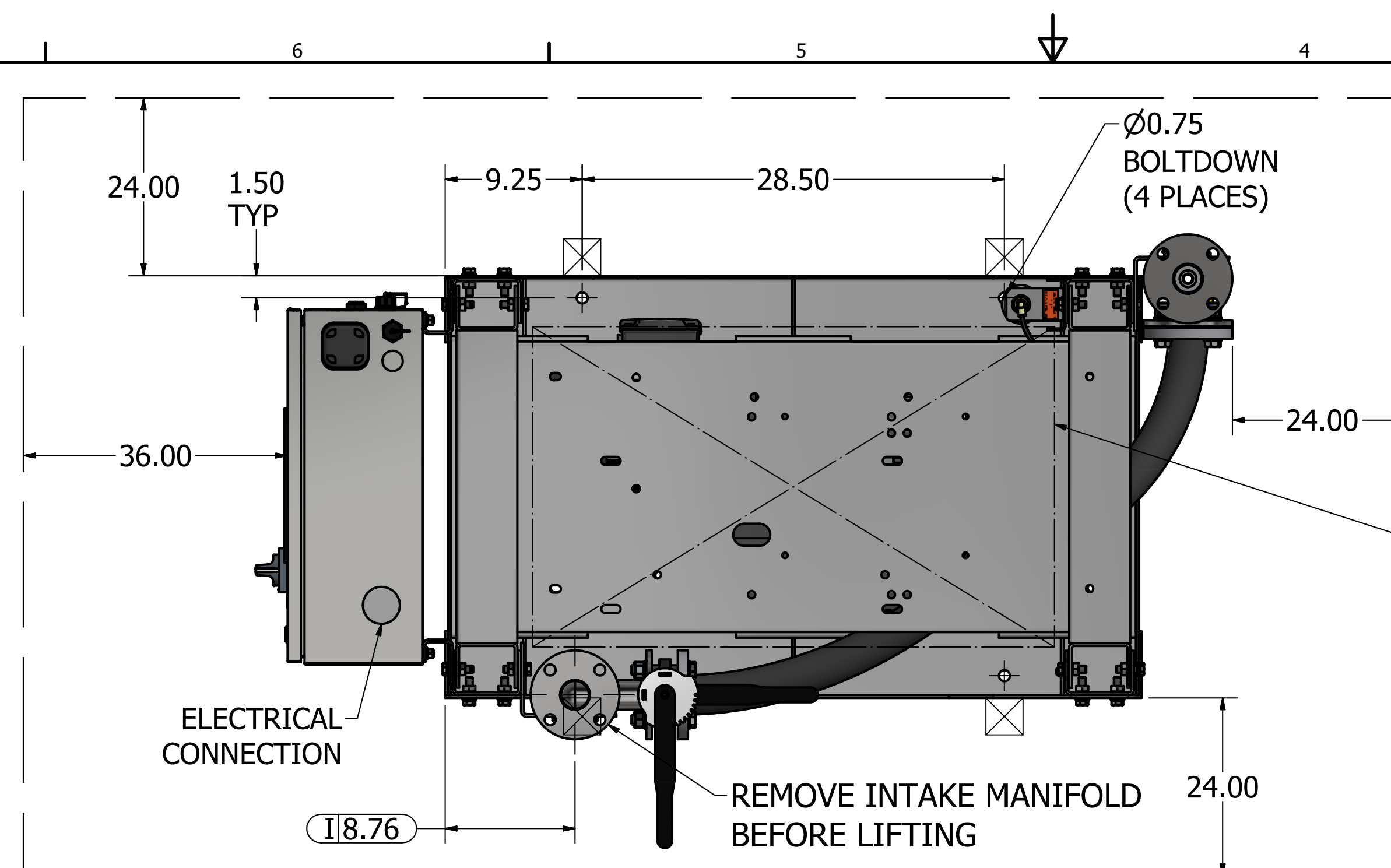


Notes:

1. TX MODULE WEIGHT: 1,553 LBS (INCLUDES FUTURE EXPANSION PUMP),  
240G TANK WEIGHT: 693 LBS
2.  INDICATES LIFTING POINT.
3.  DENOTES CENTER OF GRAVITY (INCLUDES FUTURE EXPANSION PUMP).

SYSTEM CONNECTIONS	
ID	DESCRIPTION
I	INLET LOCATION
D	DISCHARGE LOCATION
C	CONDENSATE DRAIN LOCATION
T	TANK DRAIN LOCATION



MINIMUM CLEARANCE FOR  
MAINTENANCE & VENTILATION

FUTURE EXPANSION  
PUMP

RECEIVER BYPASS  
VALVE

MANUAL DRAIN CONN.  
1/2" NPT (FEMALE)

HOSPITAL CONN-  
2" FLANGE

0.56 X 0.88 SLOT  
Ø26.00 B.C.  
EQUALLY SPACED  
(4 PLACES)

OUTLET-  
2" FLANGE

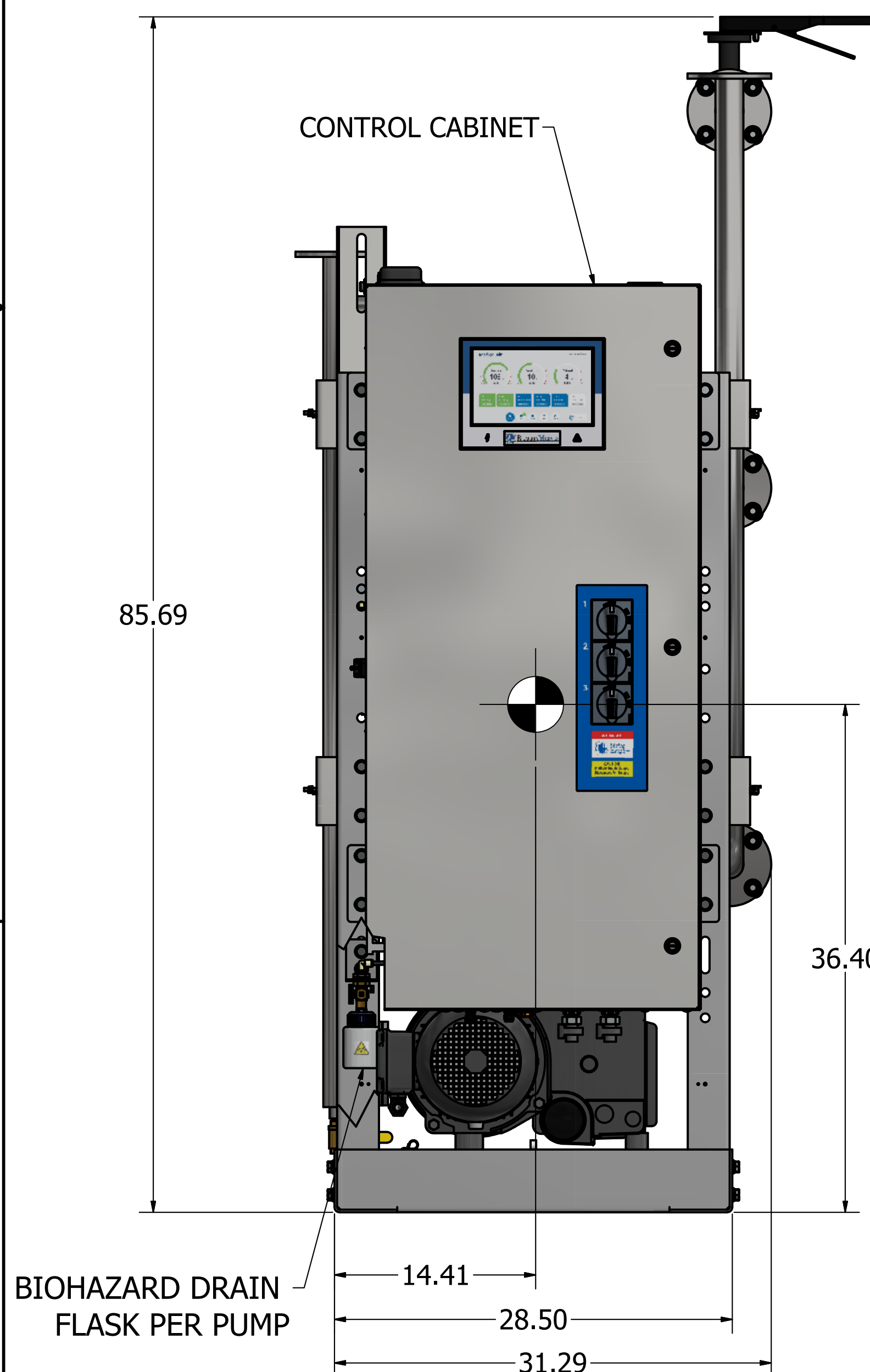
51.19

21.50

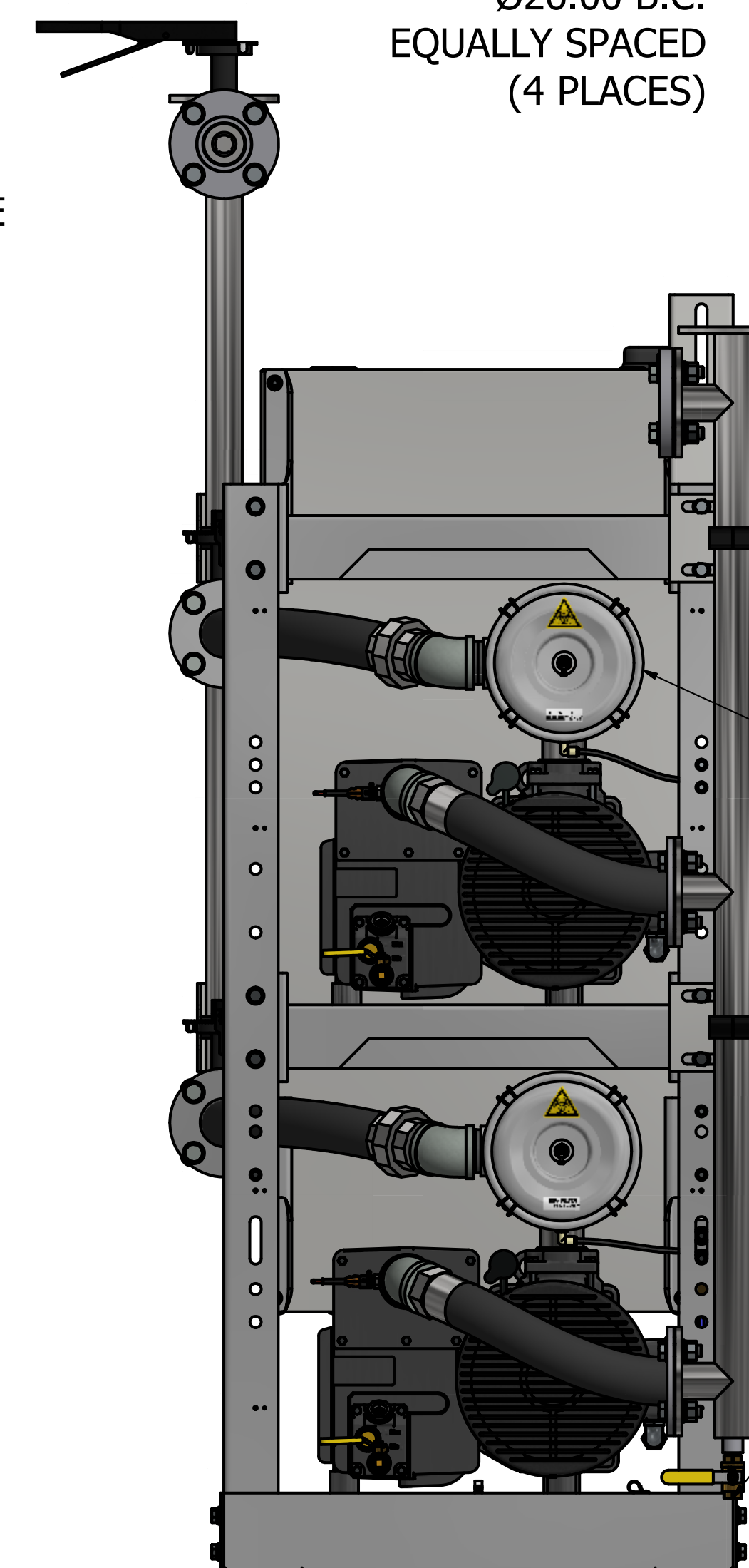
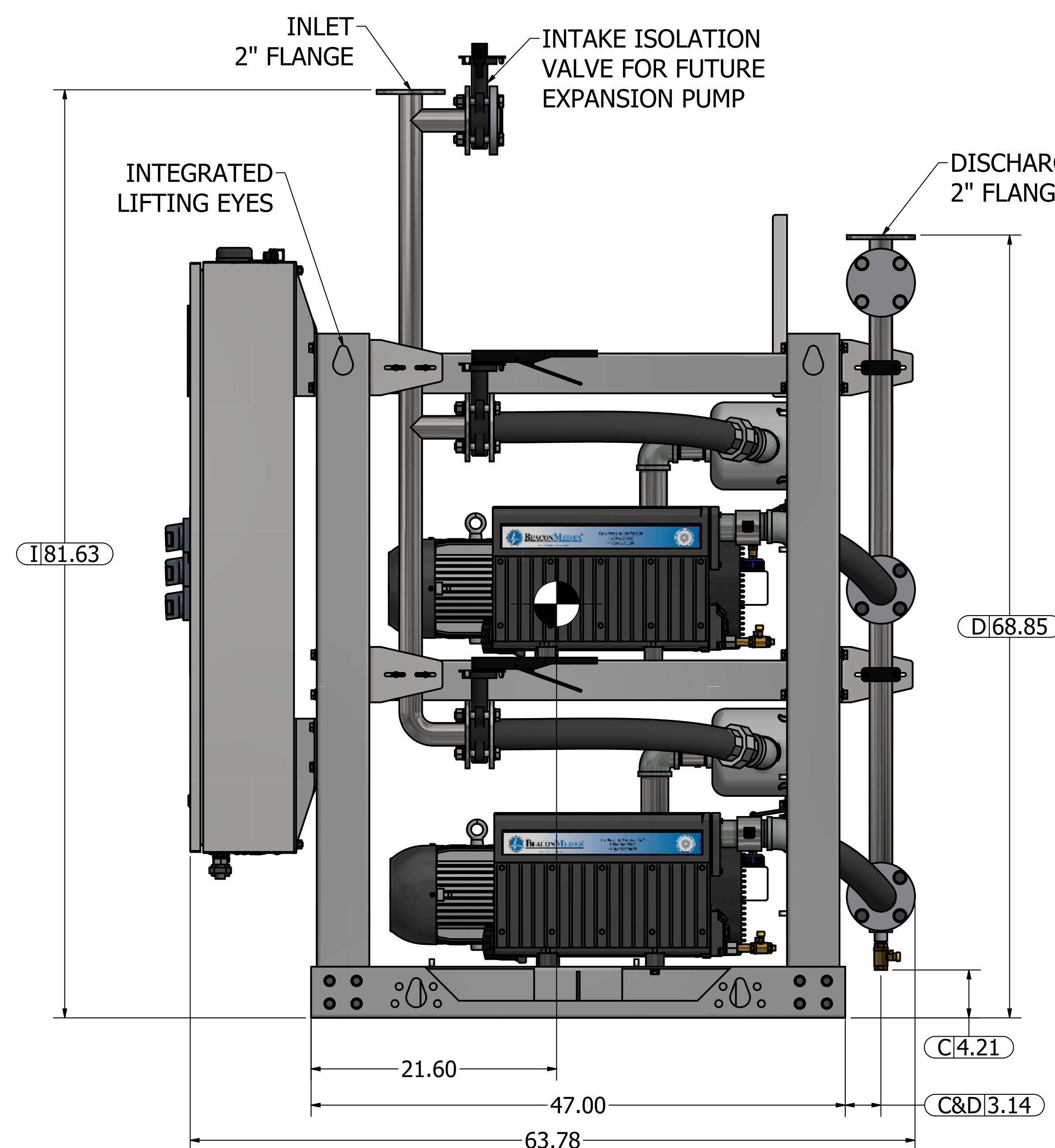
240 GAL VACUUM RECEIVER  
2" FLANGED CONNECTIONS  
(SCALE 1:10)



HEPA INTAKE FILTER  
PER PUMP

MANUAL  
CONDENSATE  
DRAIN



BIOHAZARD DRAIN  
FLASK PER PUMP



Revised:	APS	Date:	3/27/2023	Drawn:	USNKKW	Date:	11/11/2023
 <b>BEACONMEDAS</b>		This drawing and the information contained thereon remain the property of BeaconMedas and may not be used for other than the purpose for which it is loaned without the expressed written permission from BeaconMedas Engineering Inc.				Scale:	
Description:		Part Number:		4107 8522 69			
GENERAL ASSEMBLY SHP DX-EXP-TX LUBE VAC MOD 240G RECEIVER				DN: HOP230842		Rev:	
				Sheet 1 of 1		DO NOT SCALE THIS DRAWING	