

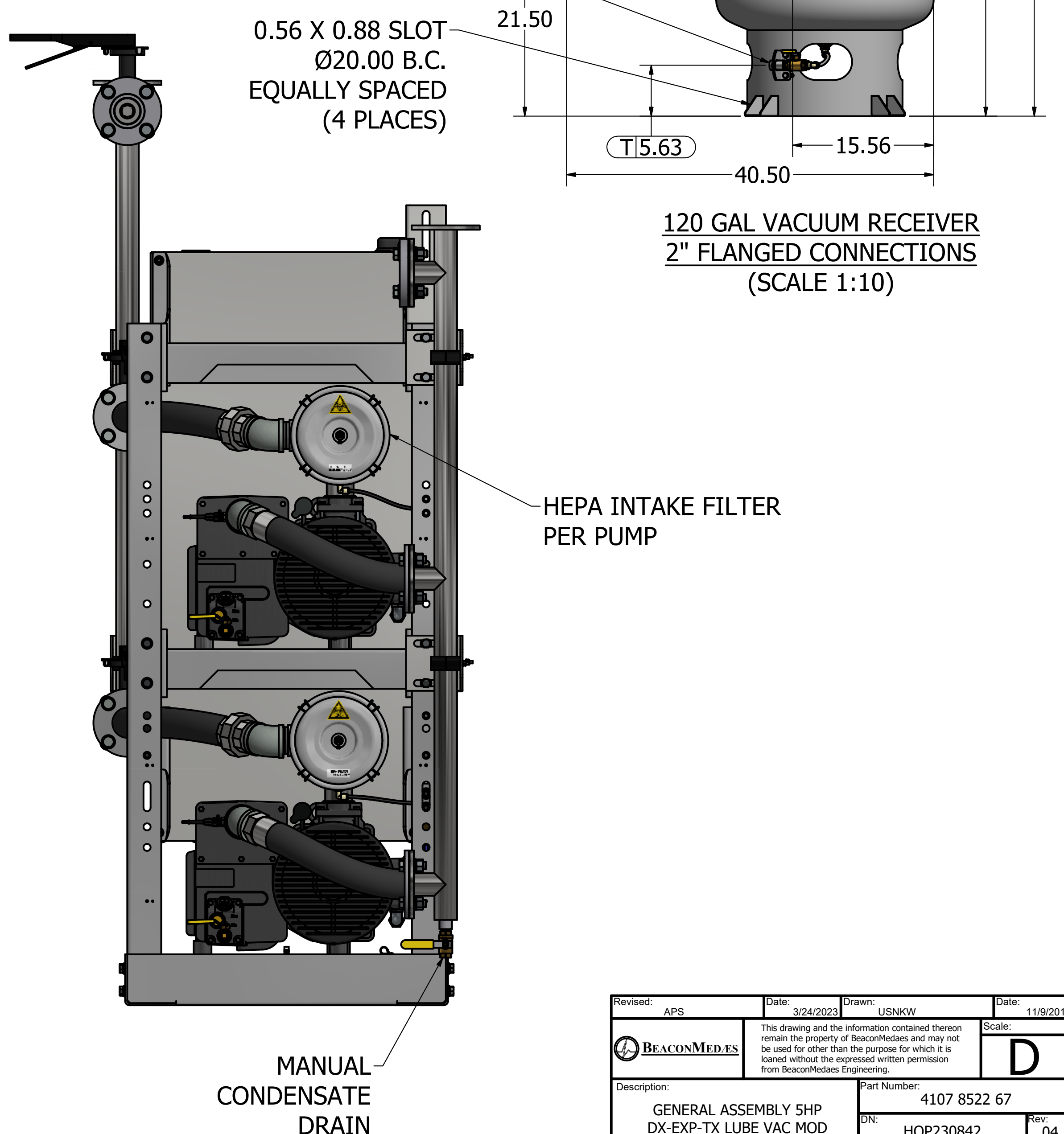
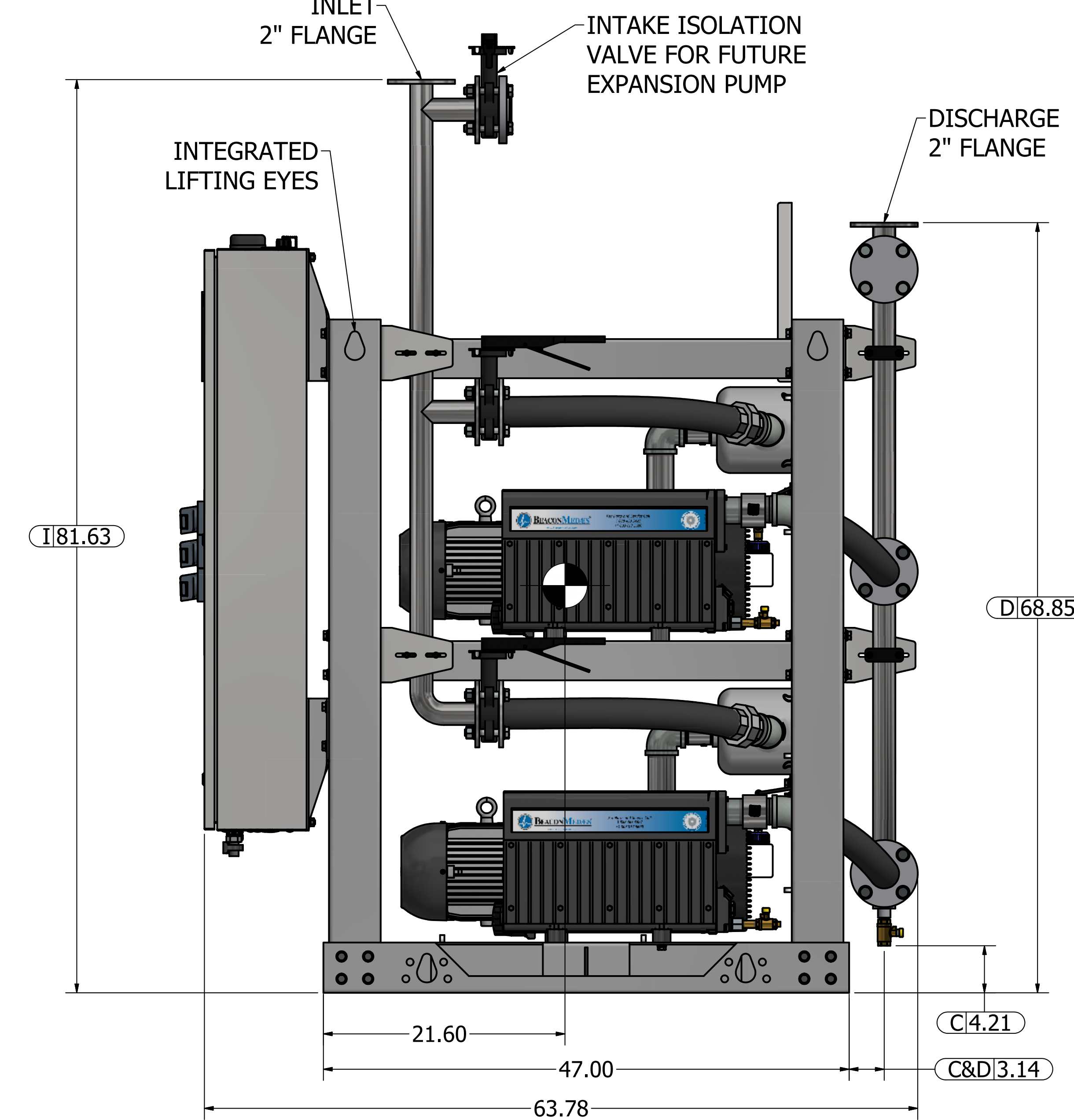
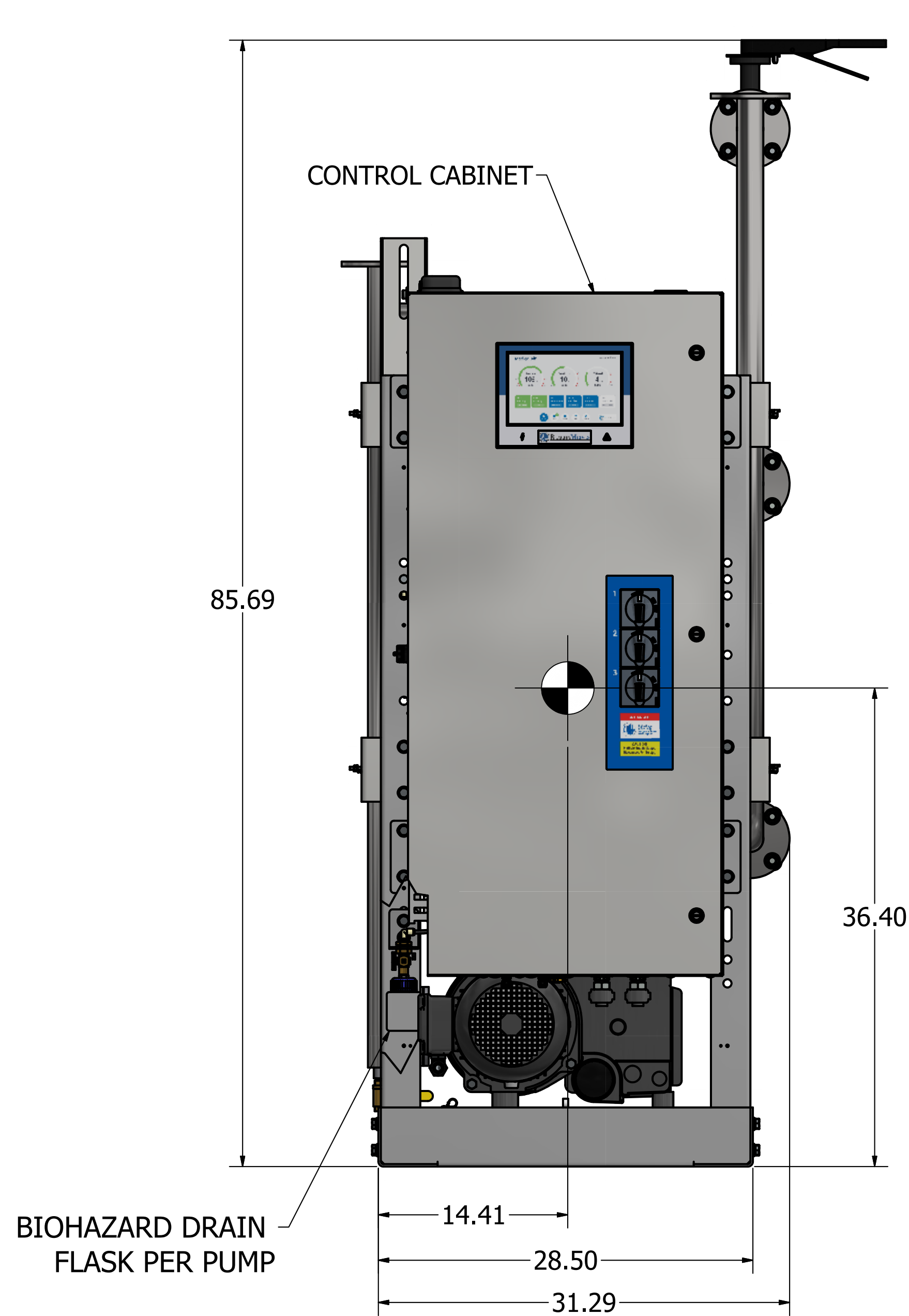
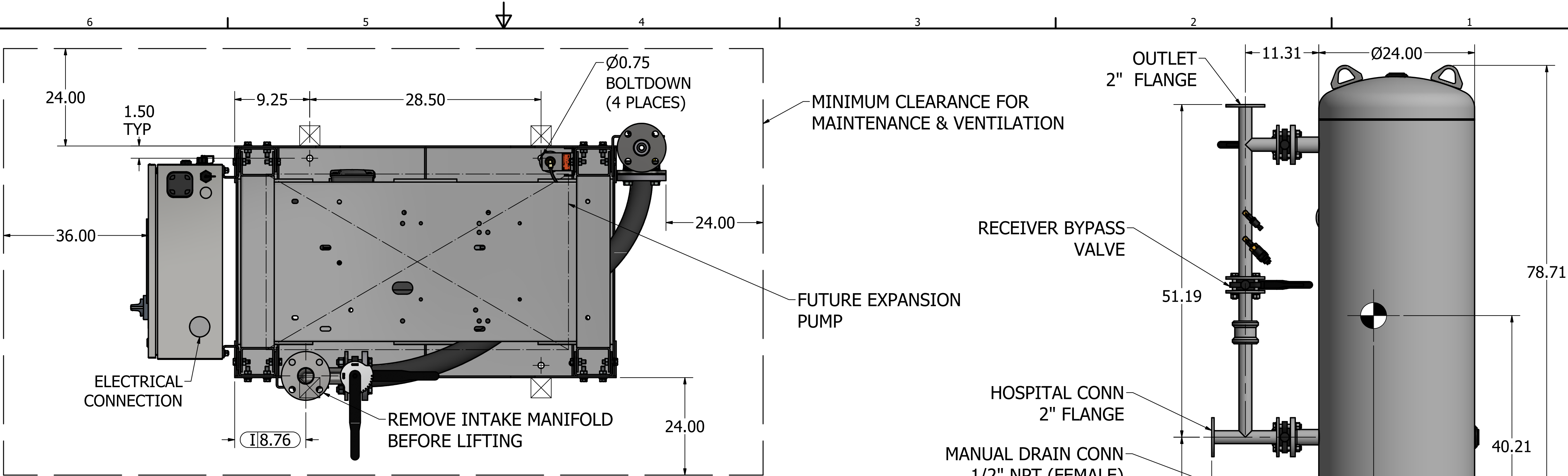



Notes:

1. TX MODULE WEIGHT: 1,553 LBS (INCLUDES FUTURE EXPANSION PUMP).
120G TANK WEIGHT: 393 LBS
2.  INDICATES LIFTING POINT.
3.  DENOTES CENTER OF GRAVITY (INCLUDES FUTURE EXPANSION PUMP).

SYSTEM CONNECTIONS	
ID	DESCRIPTION
I	INLET LOCATION
D	DISCHARGE LOCATION
C	CONDENSATE DRAIN LOCATION
T	TANK DRAIN LOCATION



Revised: APS	Date: 3/24/2023	Drawn: USNKW	Date: 11/9/2010
		Scale: D	
Description: GENERAL ASSEMBLY 5HP DX-EXP-TX LUBE VAC MOD 120G RECEIVER		Part Number: 4107 8522 67	
Sheet 1 of 1		Rev: 04	