

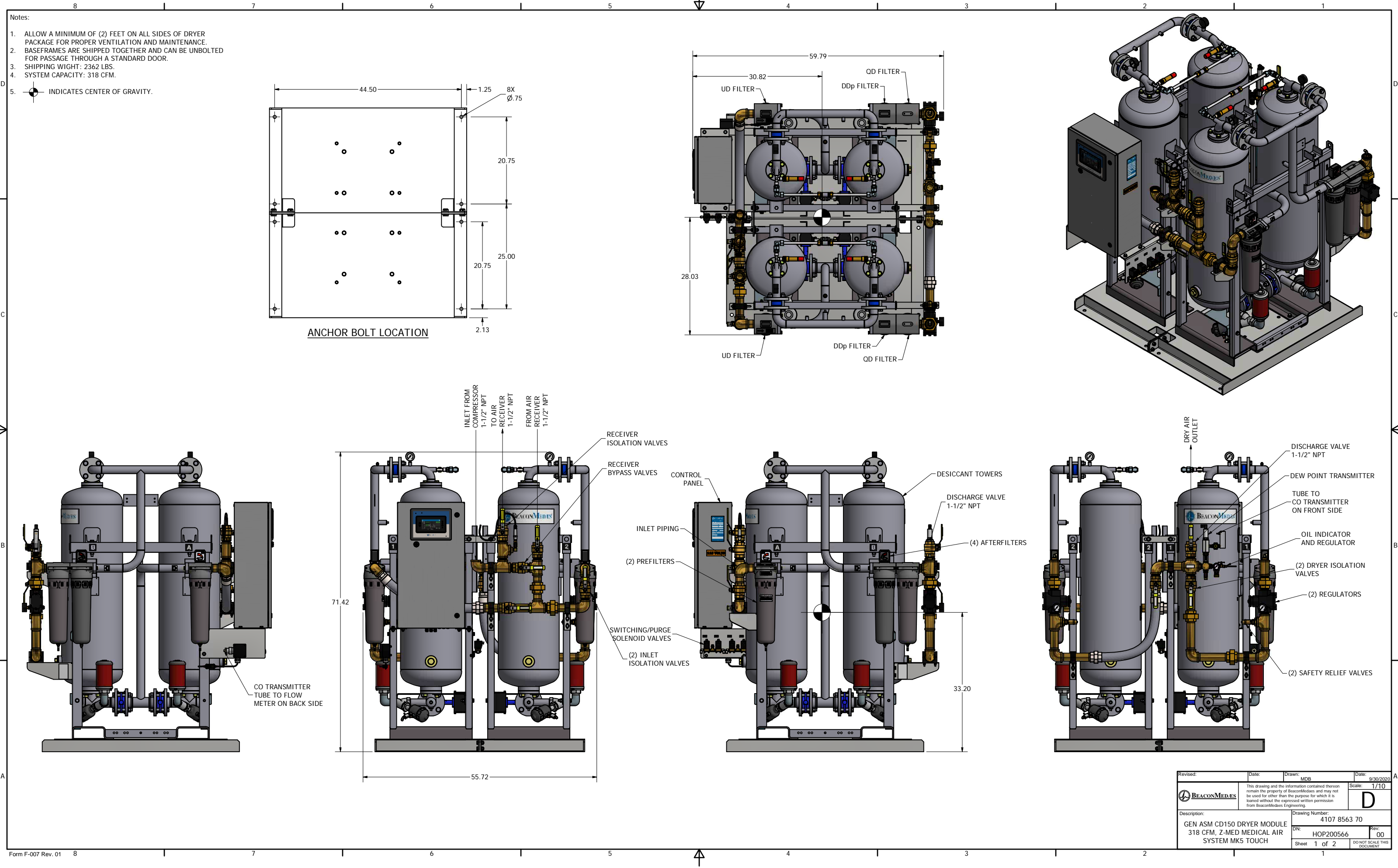


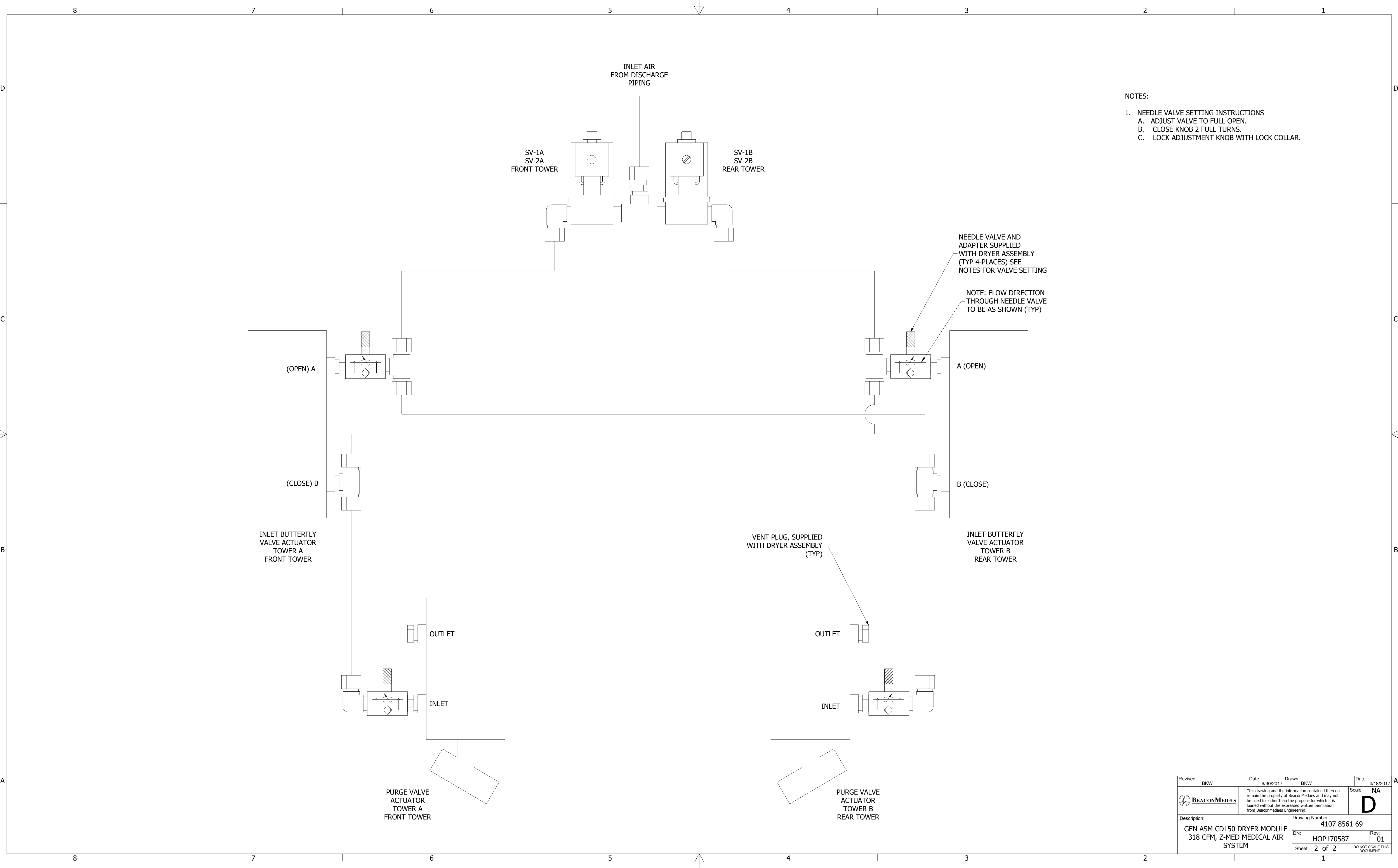
Approx. Mass ± 110 (LBS)		Center of gravity ± 2 (inch)	
Type	Pack	Dim.	Pack
ZT30	2648	W	20.4
ZT37	2758	L	38.7
ZT45	2842	H	28.2

All materials supplied are in compliance with the requirements of the List of Prohibited Substances

Note:
* With full open door

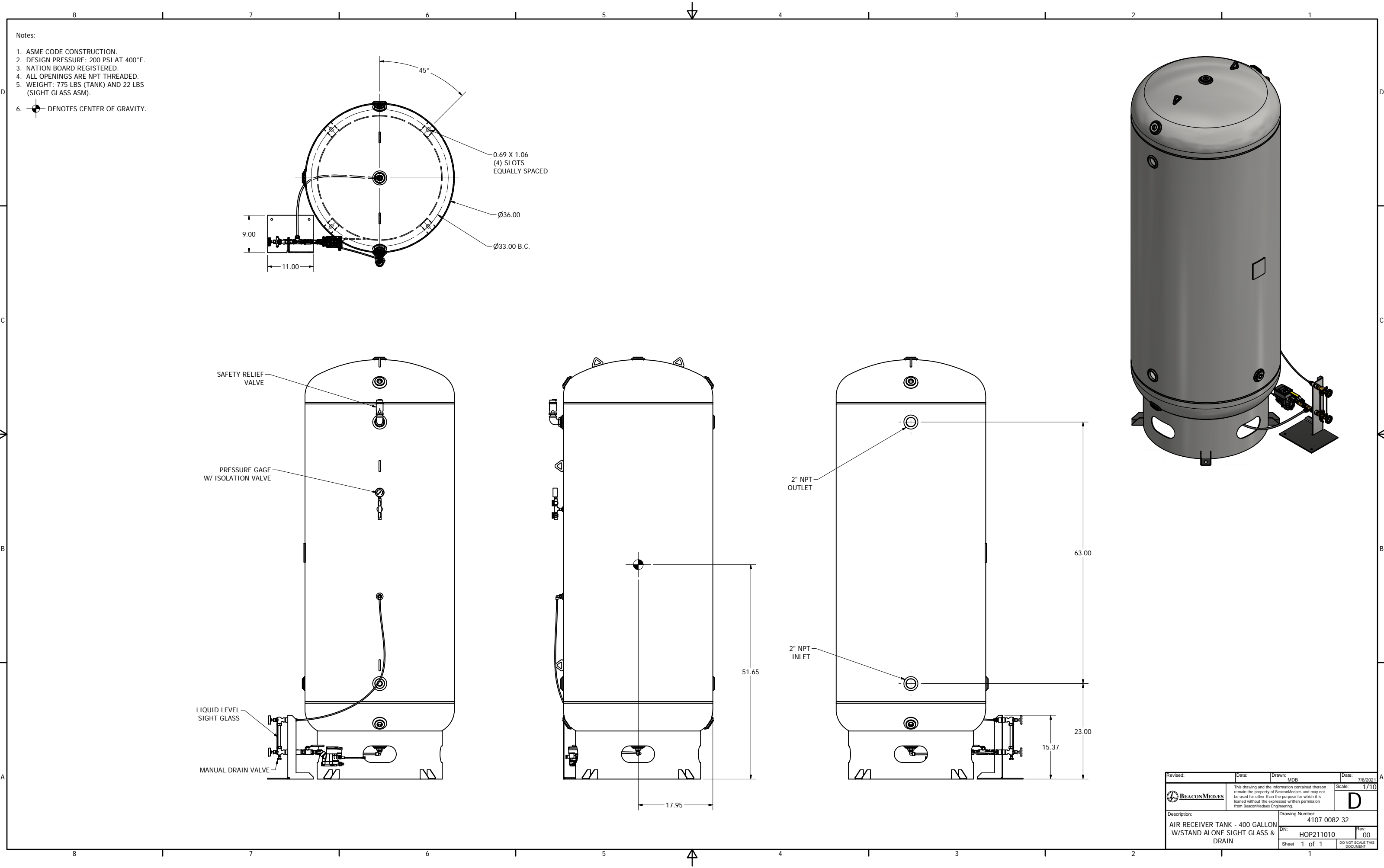
Tolerances, if not indicated, according to:													
ATLAS COPCO STANDARD CLASS													
Name		DIMENS.						ZT30-45 MED		Secrecy Class			
Material		NOT APPLICABLE								1/2E/ 3			
Treatment		Not Applicable								INV			
		Scale 1:10		Family		A		Compare				Drawing owner	
		Drawn by blank		Blank nr.				Replaces				All	
STATUS		Version Dwg 02.13		Blank wt.		0 Kg Hg wt.		338,262 Kg		Designation		Sheet 1 / 1	
Approved		Des checked,		Proc checked,		Approved,		Date 2008-01-09		9820576800			





- NOTES:
- NEEDLE VALVE SETTING INSTRUCTIONS
 - ADJUST VALVE TO FULL OPEN.
 - CLOSE KNOB 2 FULL TURNS.
 - LOCK ADJUSTMENT KNOB WITH LOCK COLLAR.

Revised: BKW	Date: 6/30/2017	Drawn: BKW	Date: 4/18/2017
BEACONMEDAES	This drawing and the information contained therein remain the property of BeaconMedaes and may not be used for other than the purpose for which it is loaned without the expressed written permission from BeaconMedaes Engineering.		Scale: NA
Description: GEN ASM CD150 DRYER MODULE 318 CFM, Z-MED MEDICAL AIR SYSTEM		Drawing Number: 4107 8561 69	
DN: HOP170587		Rev: 01	
Sheet 2 of 2		DO NOT SCALE THIS DOCUMENT	



Revised:	Date:	Drawn: MDB	Date: 7/8/2021
BEACONMEDES	This drawing and the information contained therein remain the property of BeaconMedes and may not be used for other than the purpose for which it is loaned without the expressed written permission from BeaconMedes Engineering.		Scale: 1/10
Description: AIR RECEIVER TANK - 400 GALLON W/STAND ALONE SIGHT GLASS & DRAIN		Drawing Number: 4107 0082 32	Rev: 00
Sheet 1 of 1		DO NOT SCALE THIS DOCUMENT	