

Note X:
 - Dimension drawing standardized
 - Air inlet flange details added
 - Mk-IV Elektronikon changed to Mk5

03	See Note X	2011-05-20	Ingev./Goedg.
Ed	Posi- tion	Gewijzigd van Modified from	Datum Date

Type	Pack
ZR30	2535
ZR37	2646
ZR45	2694

Dim.	Pack
W	20.3
L	38.0
H	23.9

All materials supplied are in compliance with the requirements of the List of Prohibited Substances

9820576900	02.11
Parent 3D model	Ed. - Version 3D

Tolerances, if not indicated, according to:			
ATLAS COPCO STANDARD CLASS			
Name	DIMENS.		ZR30-45 MED
Material	NOT APPLICABLE		1102 K / 3
Treatment	Not Applicable		INV
Scale	1:10	Family	A / Compare
Drawn by	sraman	Blank nr.	Replaces
Version Drwg	03.10	Blank wt.	0 Kg
Des checked.	Prod checked.	Approved.	Date 2008-01-22
STATUS		Designation	
Approved		9820576900	



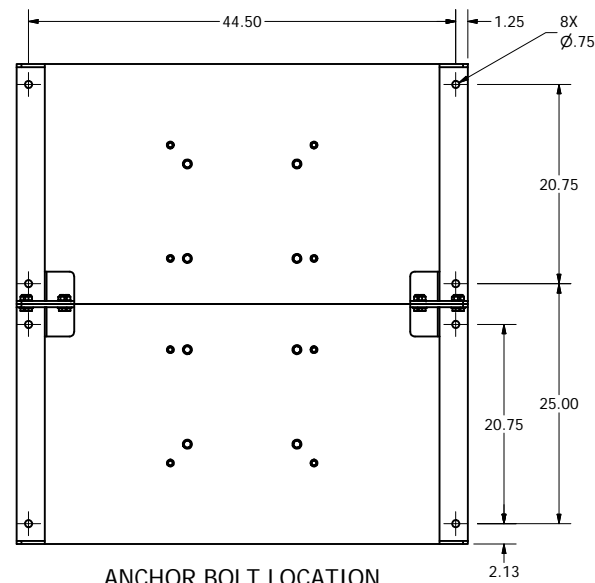
Sheet 1 / 1

9820576900

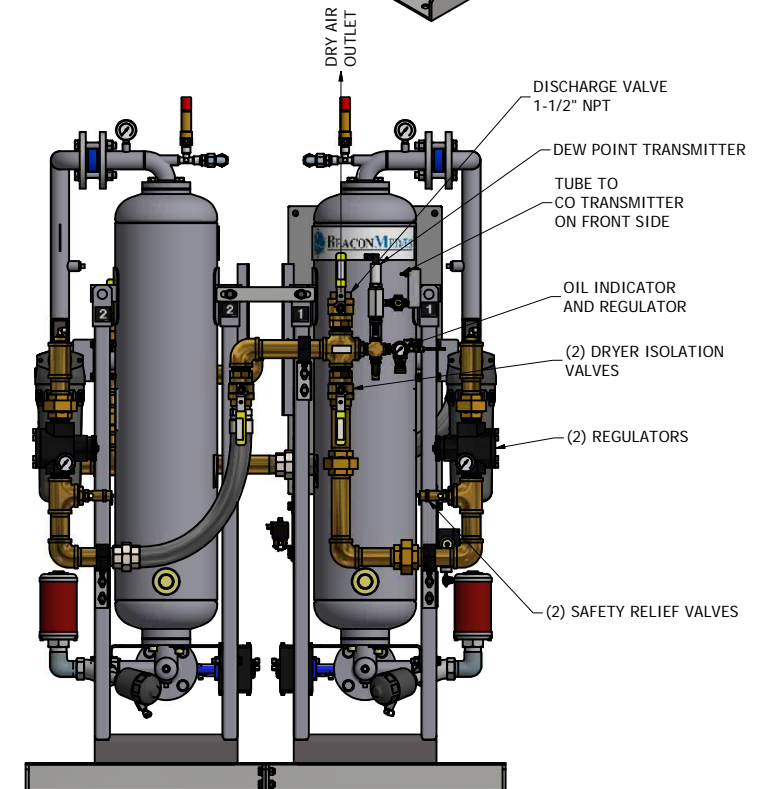
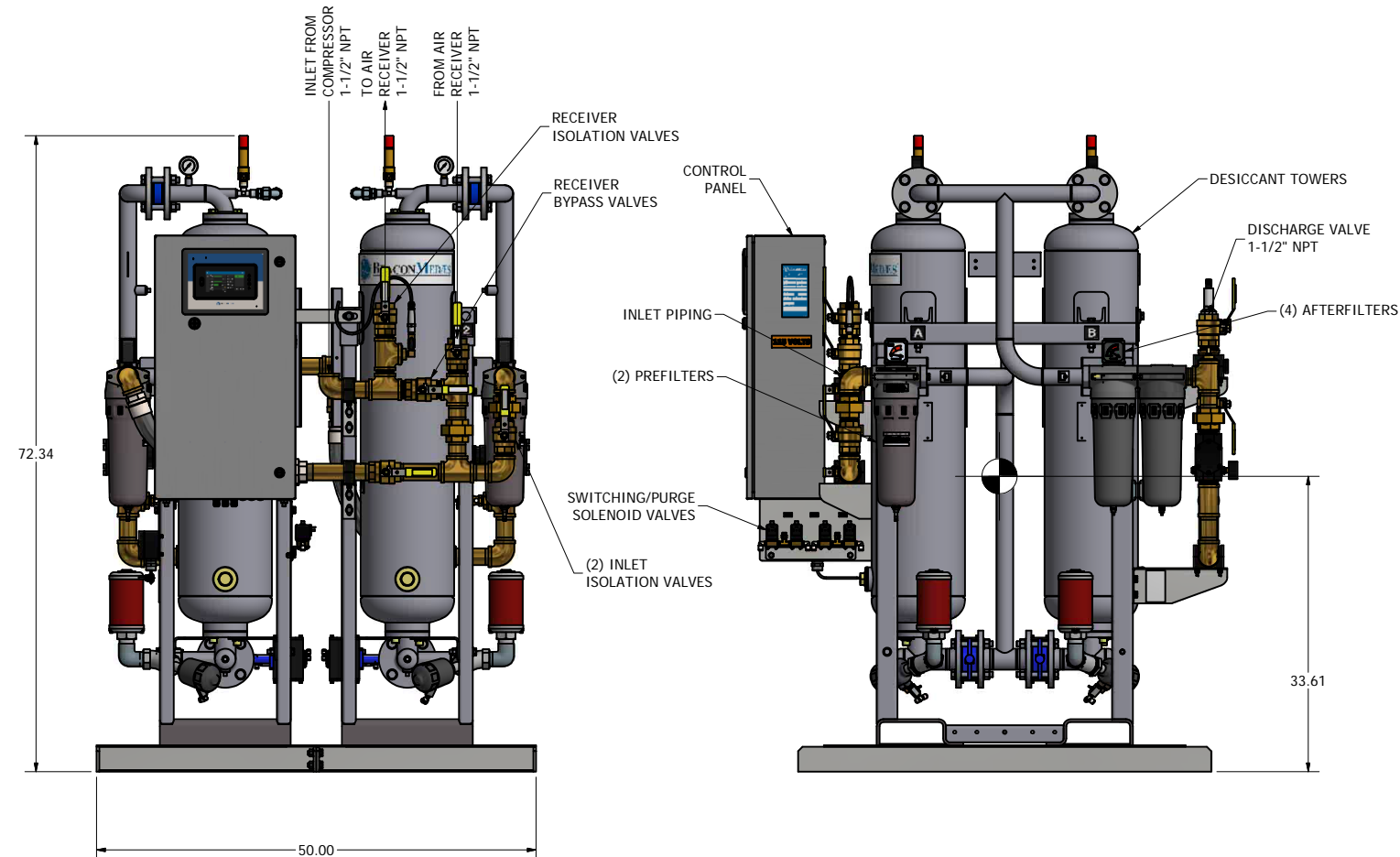
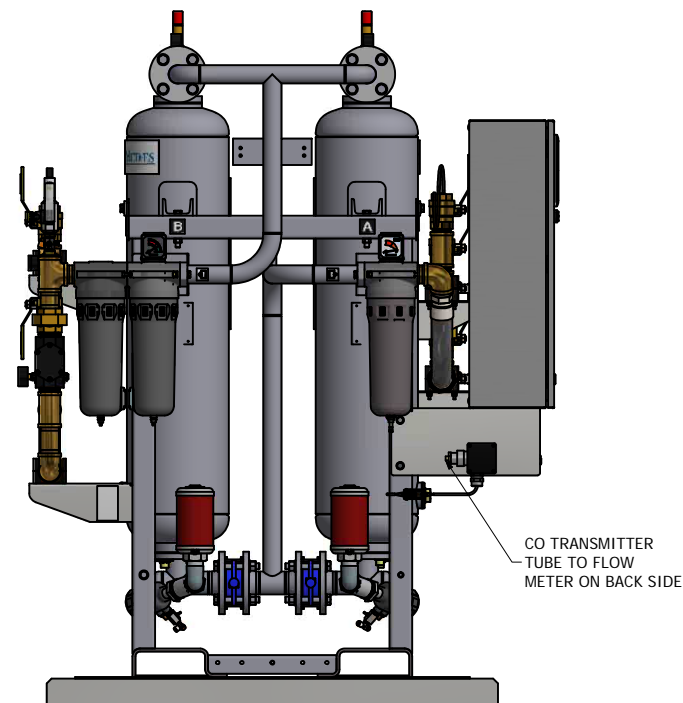
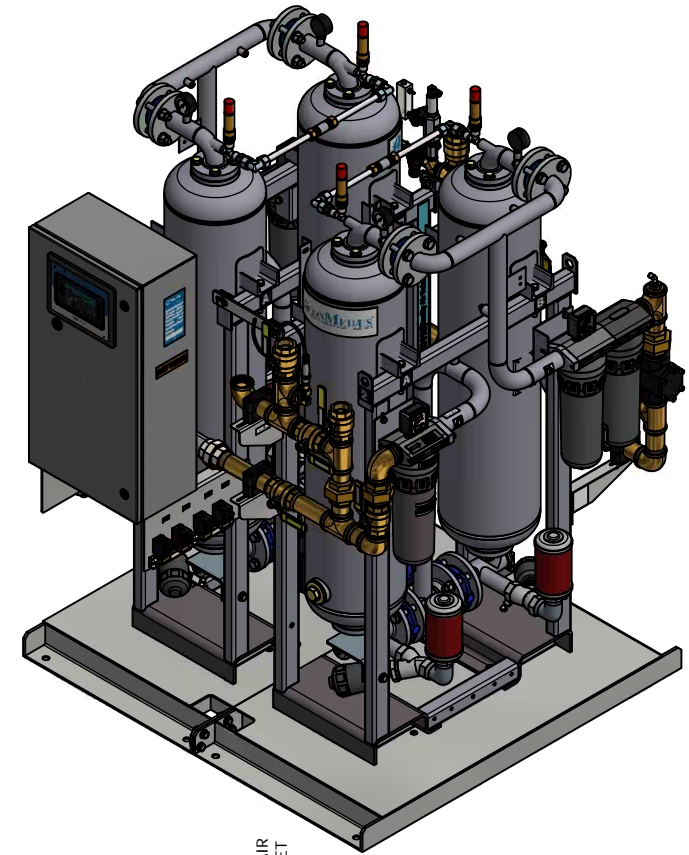
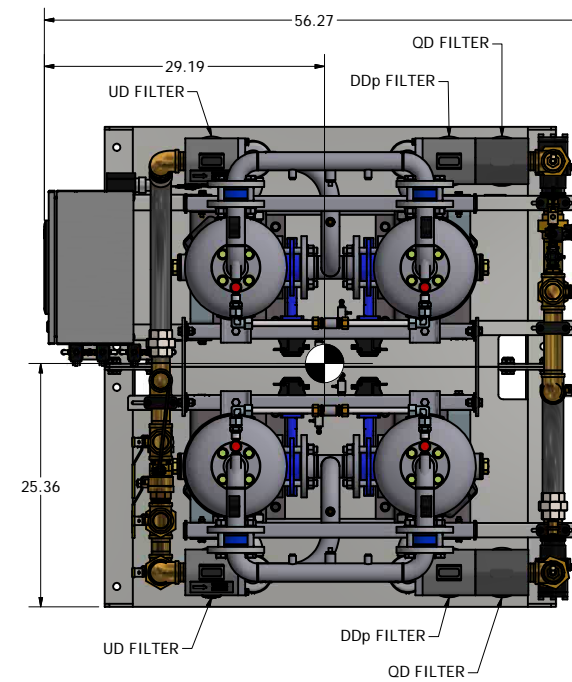
Notes:

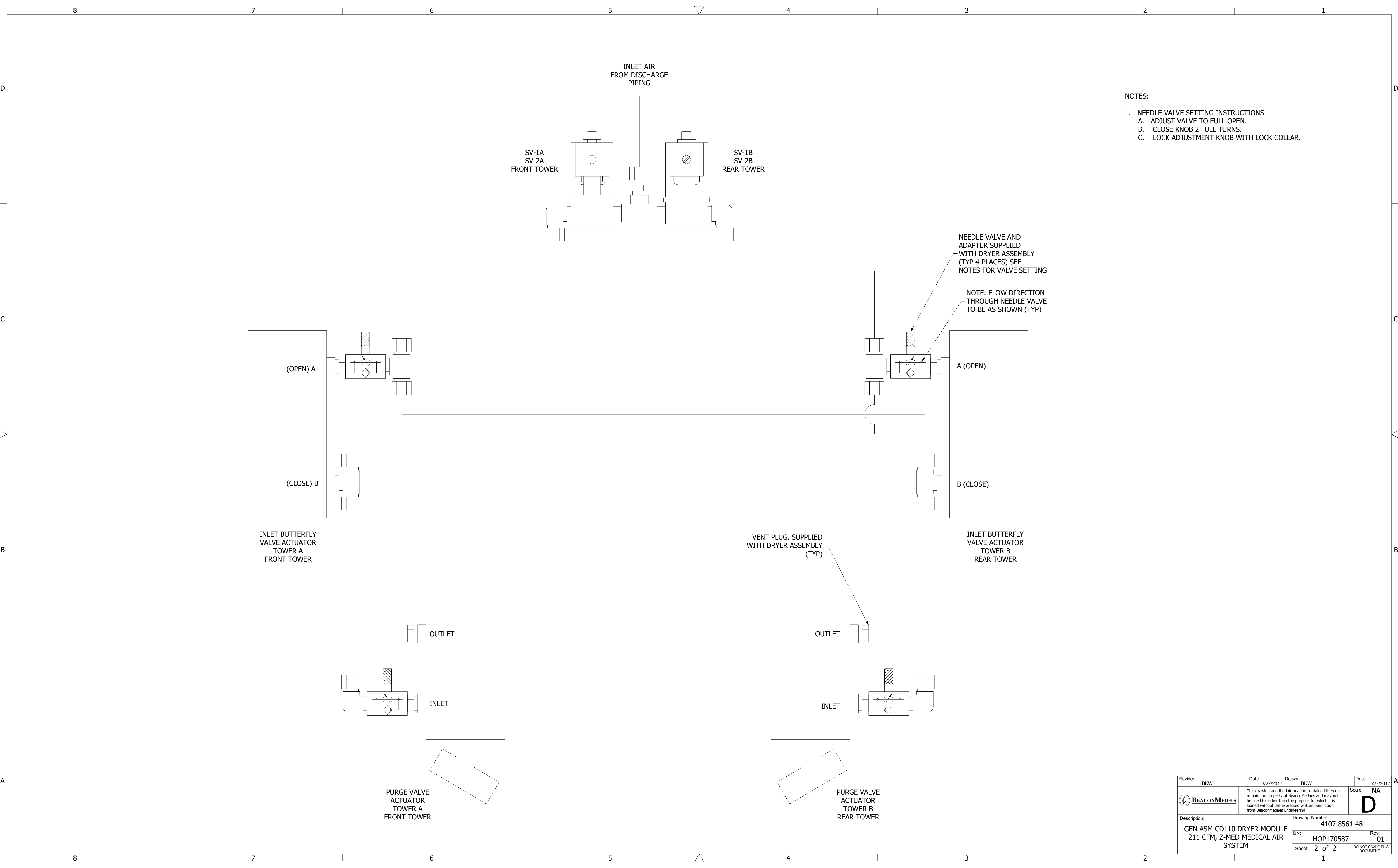
1. ALLOW A MINIMUM OF (2) FEET ON ALL SIDES OF DRYER PACKAGE FOR PROPER VENTILATION AND MAINTENANCE.
2. BASEFRAMES ARE SHIPPED TOGETHER AND CAN BE UNBOLTED FOR PASSAGE THROUGH A STANDARD DOOR.
3. SHIPPING WIGHT: 1798 LBS.
4. SYSTEM CAPACITY: 211 CFM.

5.  INDICATES CENTER OF GRAVITY.



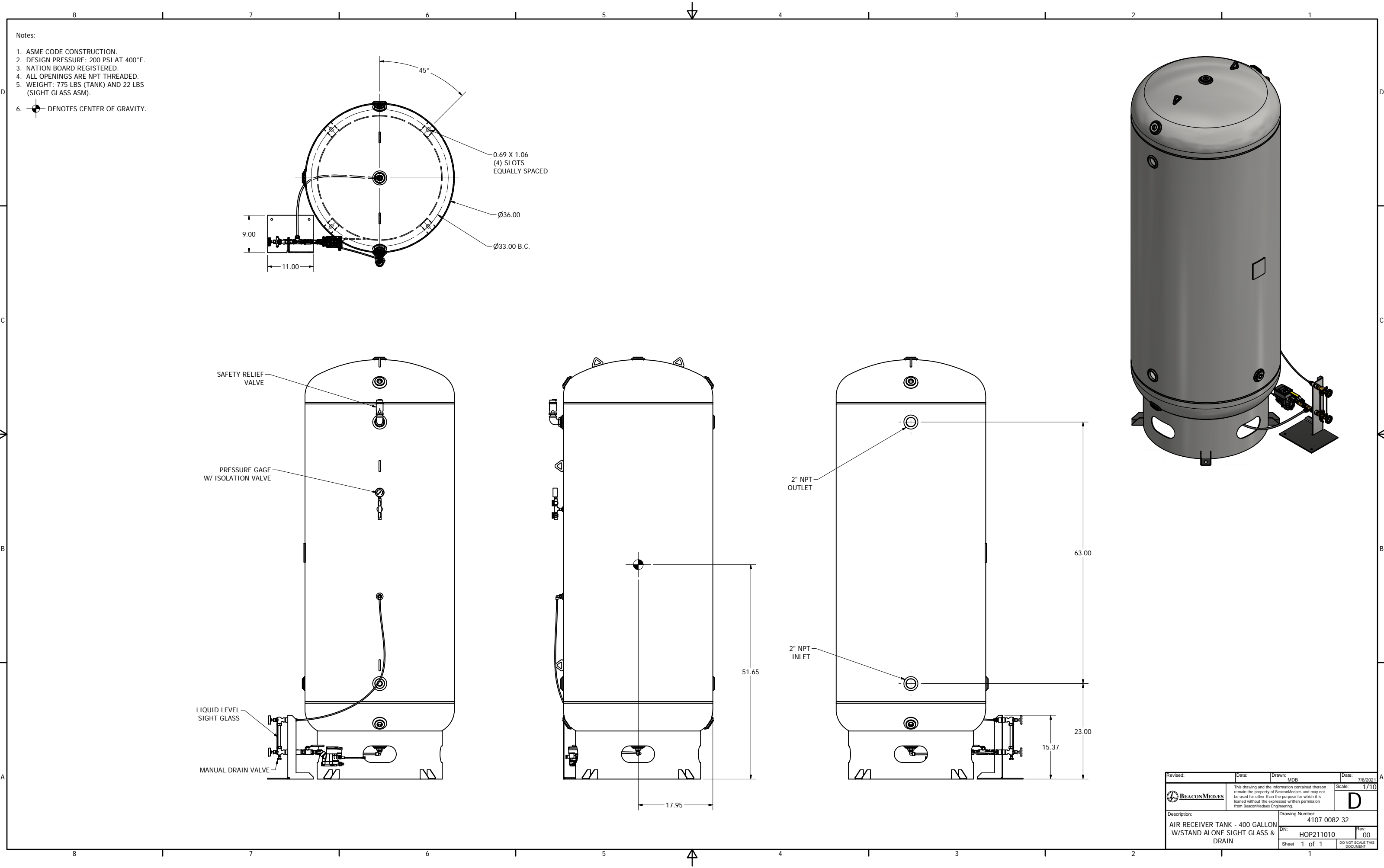
ANCHOR BOLT LOCATION





- NOTES:
- NEEDLE VALVE SETTING INSTRUCTIONS
 - ADJUST VALVE TO FULL OPEN.
 - CLOSE KNOB 2 FULL TURNS.
 - LOCK ADJUSTMENT KNOB WITH LOCK COLLAR.

Revised: BKW	Date: 6/27/2017	Drawn: BKW	Date: 4/7/2017
BEACONMEDAES	This drawing and the information contained therein remain the property of BeaconMedaes and may not be used for other than the purpose for which it is loaned without the expressed written permission from BeaconMedaes Engineering.		Scale: NA
Description: GEN ASM CD110 DRYER MODULE 211 CFM, Z-MED MEDICAL AIR SYSTEM		Drawing Number: 4107 8561 48	
DN: HOP170587		Rev: 01	
Sheet 2 of 2		DO NOT SCALE THIS DOCUMENT	



Revised:	Date:	Drawn: MDB	Date: 7/8/2021
BEACONMEDES	This drawing and the information contained therein remain the property of BeaconMedes and may not be used for other than the purpose for which it is loaned without the expressed written permission from BeaconMedes Engineering.		Scale: 1/10
Description: AIR RECEIVER TANK - 400 GALLON W/STAND ALONE SIGHT GLASS & DRAIN		Drawing Number: 4107 0082 32	Rev: 00
Sheet 1 of 1		DN: HOP211010	DO NOT SCALE THIS DOCUMENT