

Note X:
 - Dimension drawing standardized
 - Air inlet flange details added
 - Mk-IV Elektronikon changed to Mk5

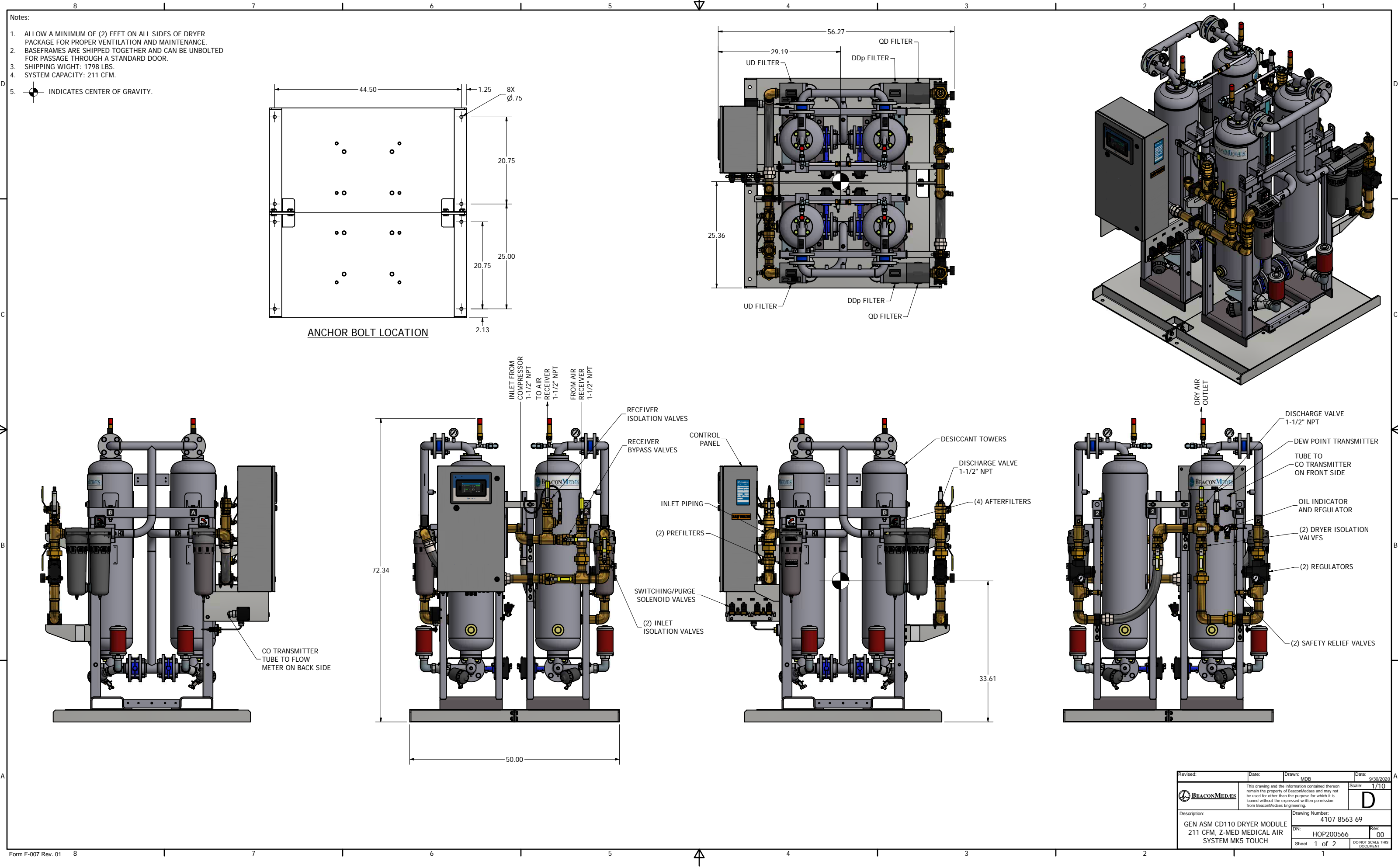
Approx. Mass ±110 (LBS)		Center of gravity ±2 (inch)	
Type	Pack	Dim.	Pack
ZT30	2648	W	20.4
ZT37	2758	L	38.7
ZT45	2842	H	28.2

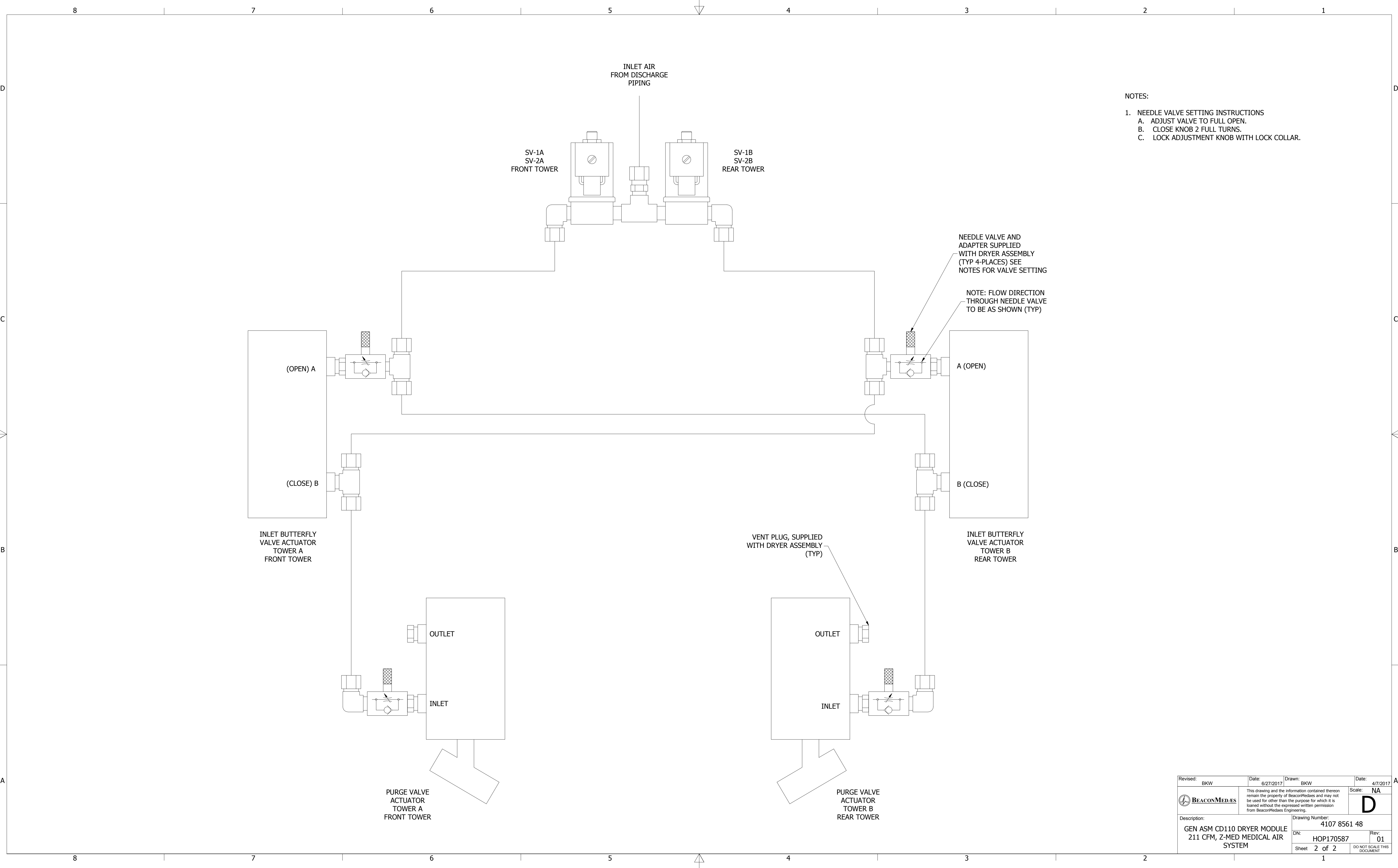
All materials supplied are in compliance with the requirements of the List of Prohibited Substances

Note:
 * With full open door

9820576800
 Parent 3D model

Tolerances, if not indicated, according to:			
ATLAS COPCO STANDARD CLASS			
Name	DIMENS. ZT30-45 MED		
Material	NOT APPLICABLE		
Treatment	Not Applicable		
Scale	1:10	Family	A/Compare
Drawn by	sraman	Blank nr.	Replaces
Version Drwg	02.13	Blank wt.	0 kg
Des checked.	Prod checked.	Approved.	Date 2009.01.09
9820576800			9820576800





- NOTES:
- NEEDLE VALVE SETTING INSTRUCTIONS
 - ADJUST VALVE TO FULL OPEN.
 - CLOSE KNOB 2 FULL TURNS.
 - LOCK ADJUSTMENT KNOB WITH LOCK COLLAR.

Revised: BKW	Date: 6/27/2017	Drawn: BKW	Date: 4/7/2017
	This drawing and the information contained therein remain the property of BeaconMedaes and may not be used for other than the purpose for which it is loaned without the expressed written permission from BeaconMedaes Engineering.		Scale: NA
			D
Description: GEN ASM CD110 DRYER MODULE 211 CFM, Z-MED MEDICAL AIR SYSTEM		Drawing Number: 4107 8561 48	
		DN: HOP170587	Rev: 01
		Sheet 2 of 2	DO NOT SCALE THIS DOCUMENT

