

Note X:

- Dimension drawing standardized
- Air inlet flange details added
- Mk-IV Elektronikon changed to Mk5

Ed	Posi- tion	See Note X	Gewijzigd van Modified from	2011-05-20 Datum Date	Ingev./Goedg. Intr./Appd.
03					

Type	Pack
ZR30	2535
ZR37	2646
ZR45	2694

Dim.	Pack
W	20.3
L	38.0
H	23.9

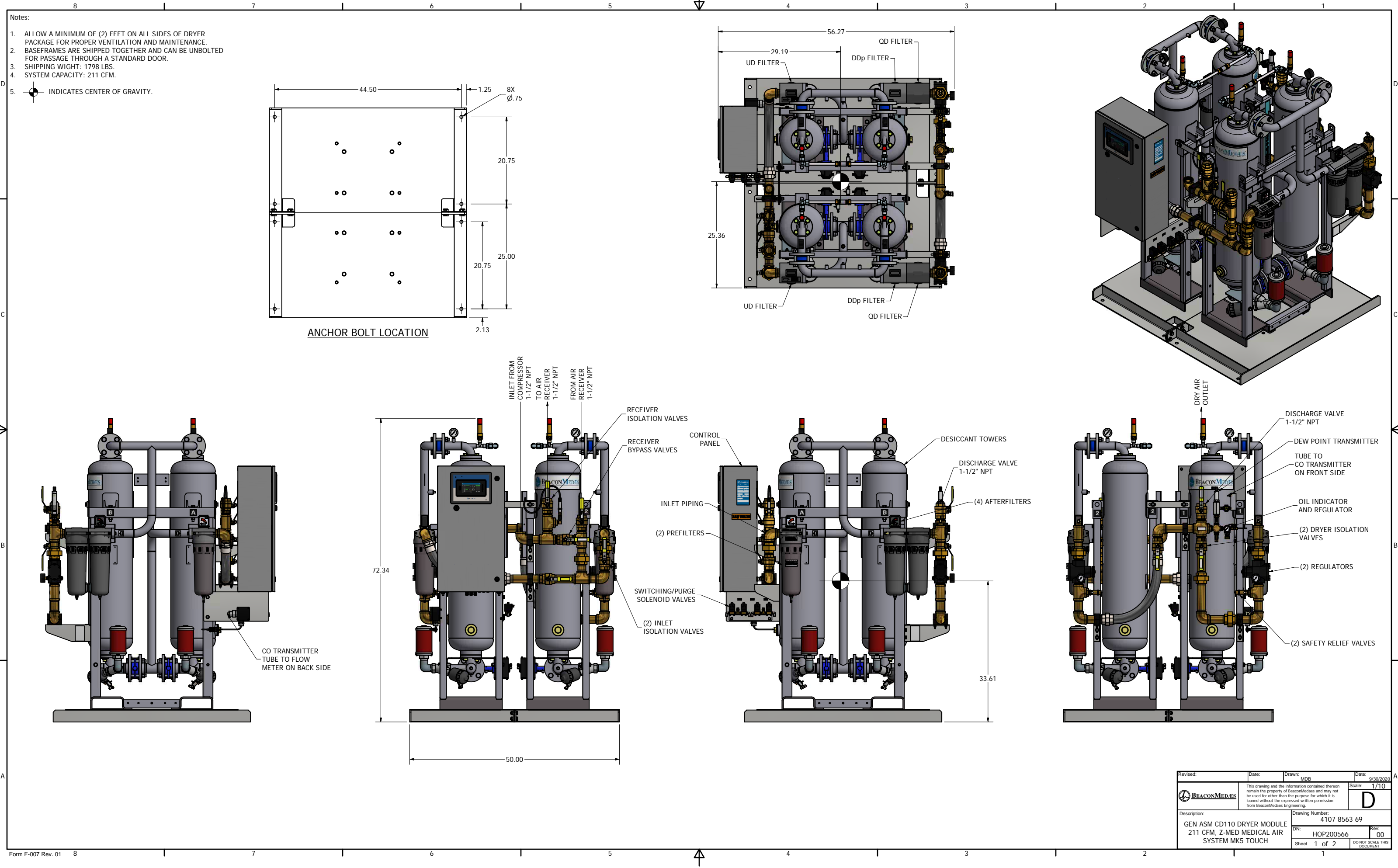
All materials supplied are in compliance with the requirements of the List of Prohibited Substances

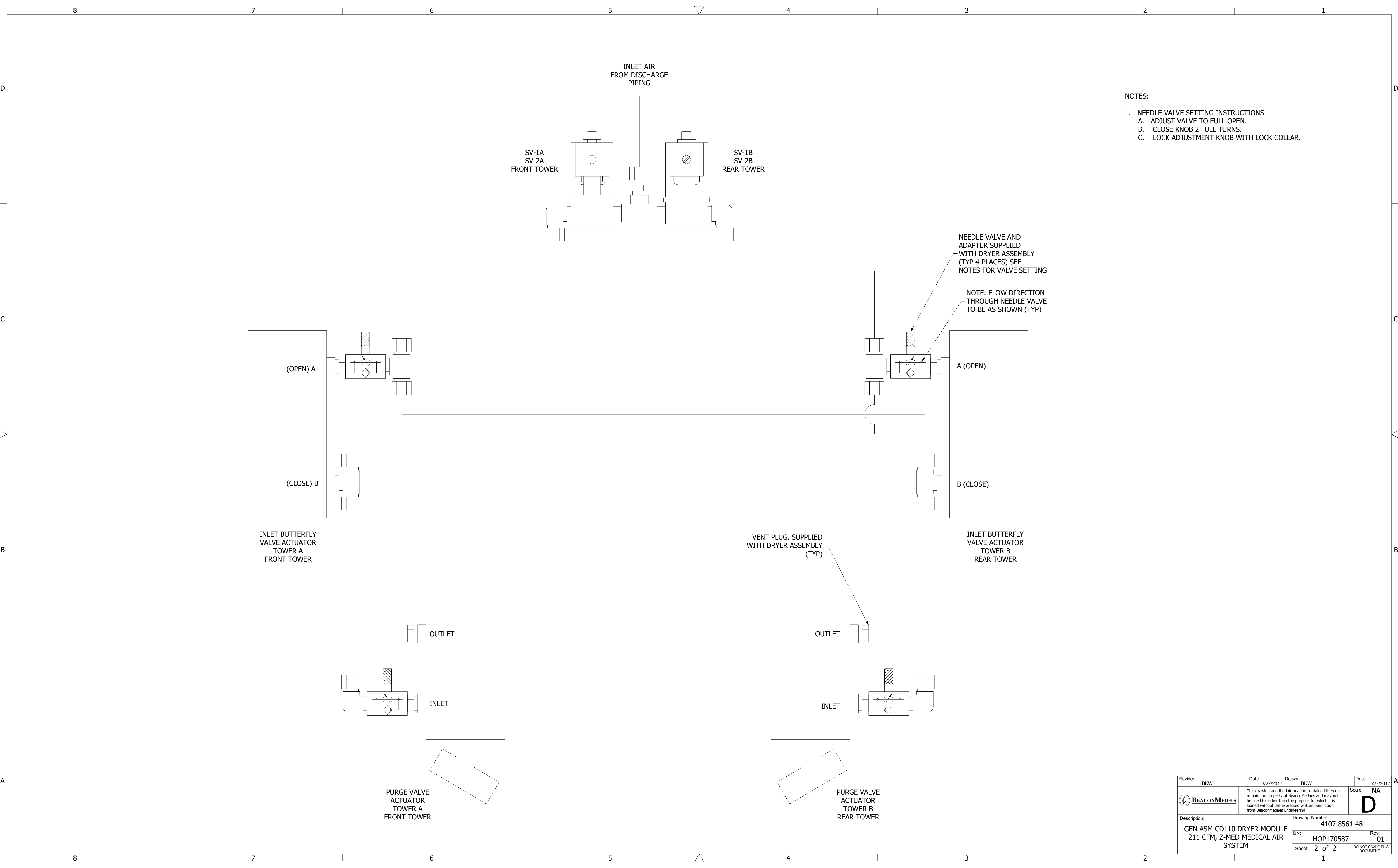
9820576900	02.11
Parent 3D model	Ed. Version 3D

Tolerances, if not indicated, according to:							
Name		DIMENS.		ZR30-45 MED		Secrecy Class	
Material		NOT APPLICABLE				1102 K / 3	
Treatment		Not Applicable				INV	
Scale		1:10		Family		A / Compare	
Drawn by		sraman		Blank nr.		Replaces	
Version Drwg		03.10		Blank wt.		0 Kg Fini wt.	
Des checked.		Prod checked.		Approved.		Date	
						2008-01-22	
STATUS		Approved		Designation		9820576900	
						Sheet 1 / 1	

Note:
* With full open door




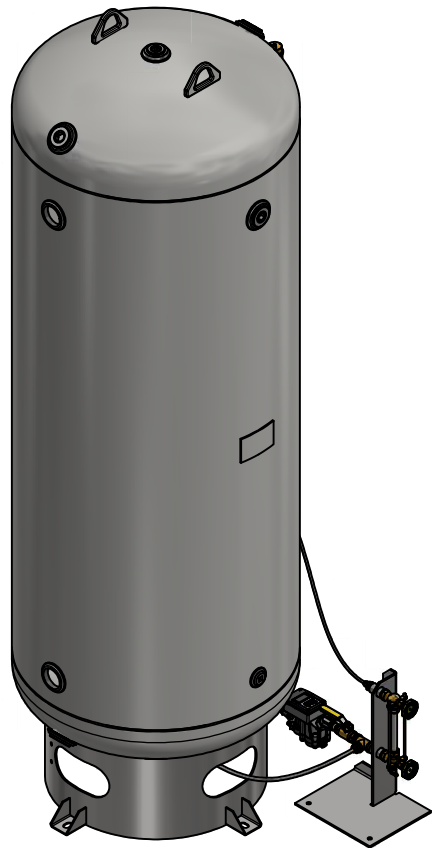
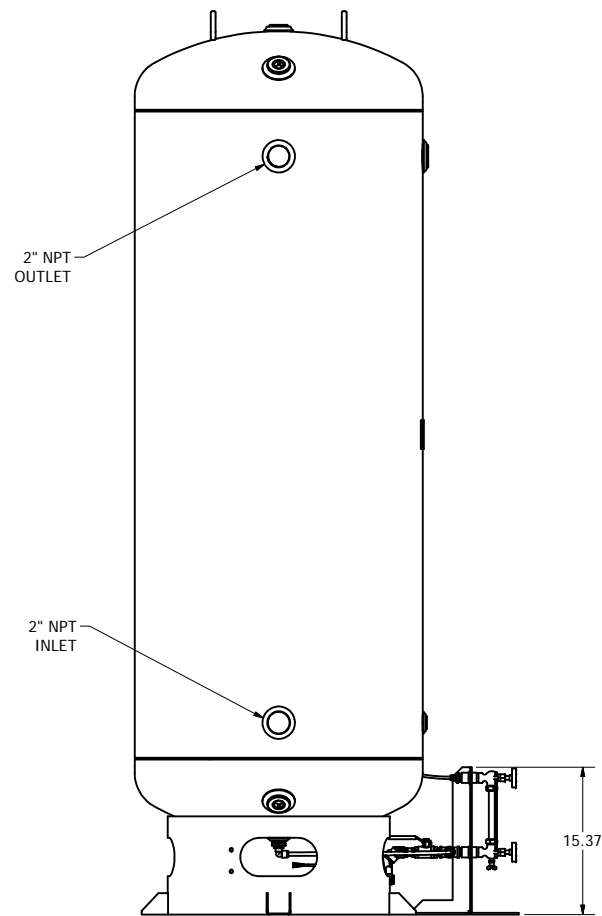
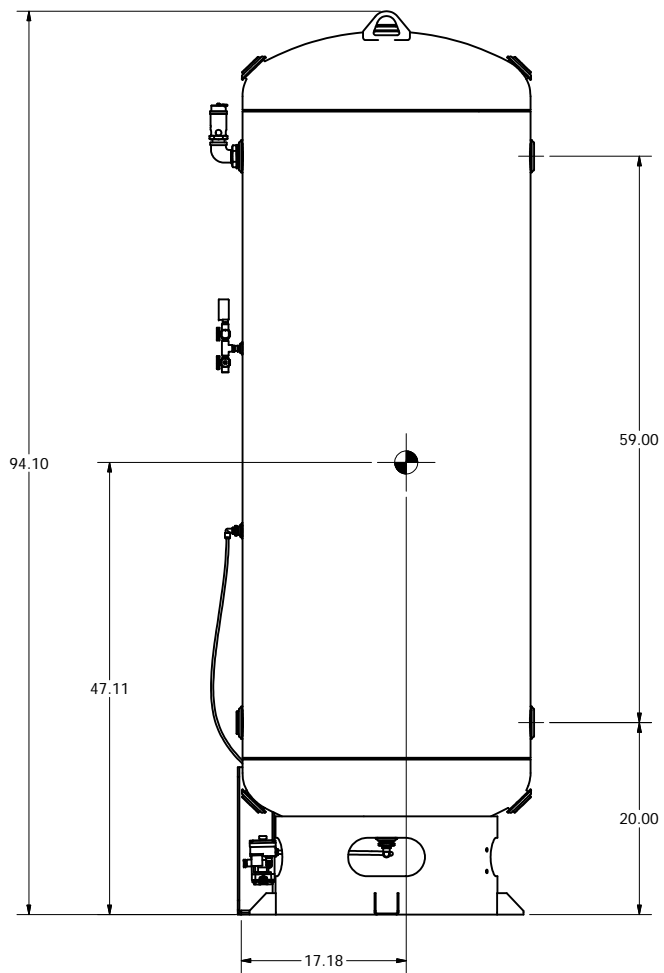
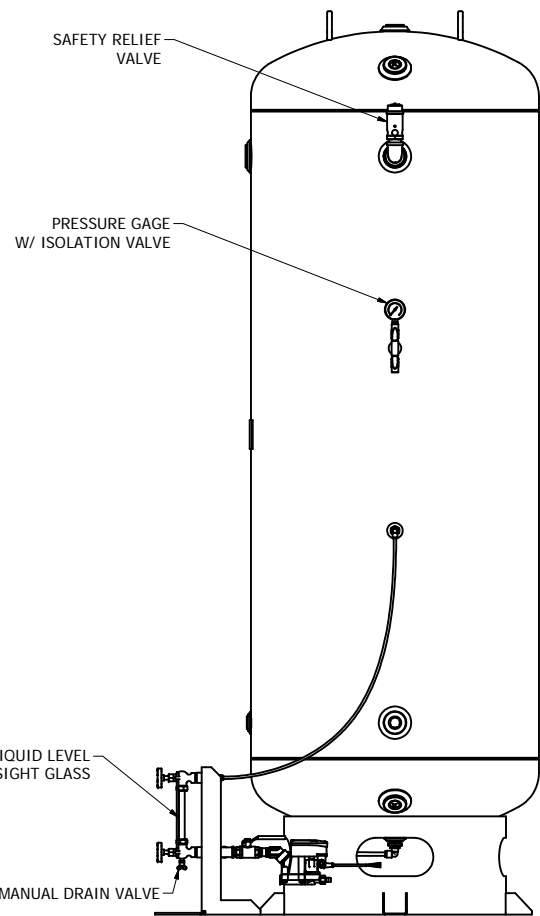
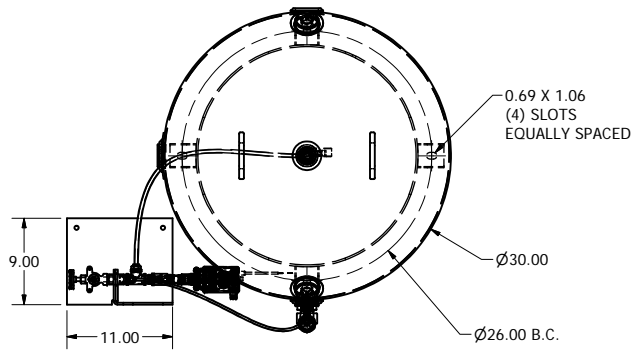





- NOTES:
- NEEDLE VALVE SETTING INSTRUCTIONS
 - ADJUST VALVE TO FULL OPEN.
 - CLOSE KNOB 2 FULL TURNS.
 - LOCK ADJUSTMENT KNOB WITH LOCK COLLAR.

Revised: BKW	Date: 6/27/2017	Drawn: BKW	Date: 4/7/2017
	This drawing and the information contained therein remain the property of BeaconMedaes and may not be used for other than the purpose for which it is loaned without the expressed written permission from BeaconMedaes Engineering.		Scale: NA
			D
Description: GEN ASM CD110 DRYER MODULE 211 CFM, Z-MED MEDICAL AIR SYSTEM		Drawing Number: 4107 8561 48	
DN: HOP170587		Rev: 01	
Sheet 2 of 2		DO NOT SCALE THIS DOCUMENT	

- Notes:
- 1. ASME CODE CONSTRUCTION.
 - 2. DESIGN PRESSURE: 200 PSI AT 400°F.
 - 3. NATION BOARD REGISTERED.
 - 4. ALL OPENINGS ARE NPT THREADED.
 - 5. WEIGHT: 520 LBS (TANK) AND 22 LBS (SIGHT GLASS ASM).
 - 6.  DENOTES CENTER OF GRAVITY.



Revised:	Date:	Drawn: MDB	Date: 7/8/2021
 BEACONMEDES	This drawing and the information contained therein remain the property of BeaconMedes and may not be used for other than the purpose for which it is loaned without the expressed written permission from BeaconMedes Engineering.		Scale: 1/10
Description: AIR RECEIVER TANK - 240 GALLON W/STAND ALONE SIGHT GLASS & DRAIN		Drawing Number: 4107 0082 31	
DN: HOP211010		Rev: 00	DO NOT SCALE THIS DOCUMENT
Sheet 1 of 1		1	