

Note X:
- Dimension drawing standardized
- Air inlet flange details added
- Mk-IV Elektronikon changed to Mk5

Approx. Mass ±110 (LBS)		Center of gravity ±2 (inch)	
Type	Pack	Dim.	Pack
ZT30	2648	W	20.4
ZT37	2758	L	38.7
ZT45	2842	H	28.2

All materials supplied are in compliance with the requirements of the List of Prohibited Substances


Note:
* With full open door

9820576800

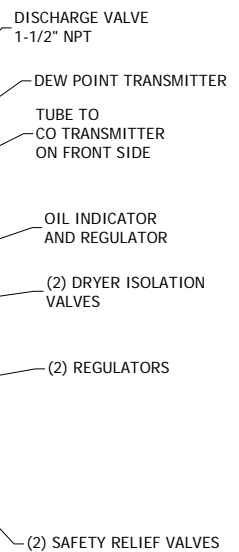
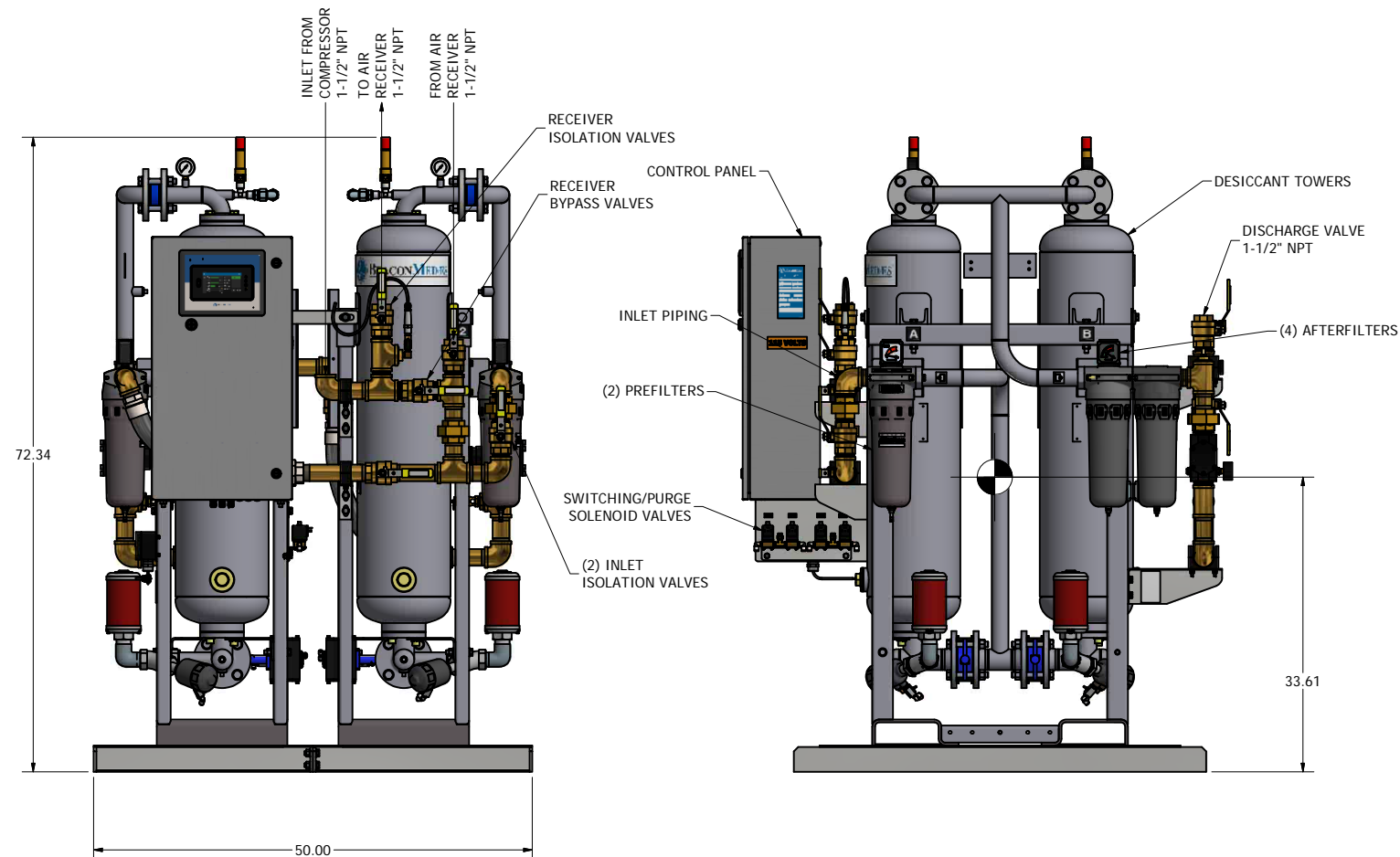
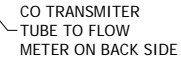
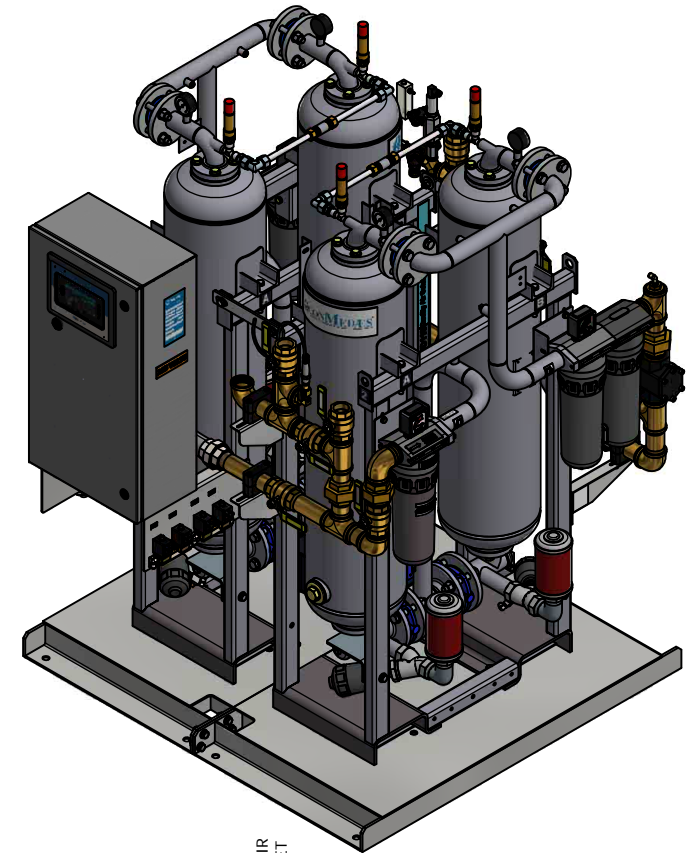
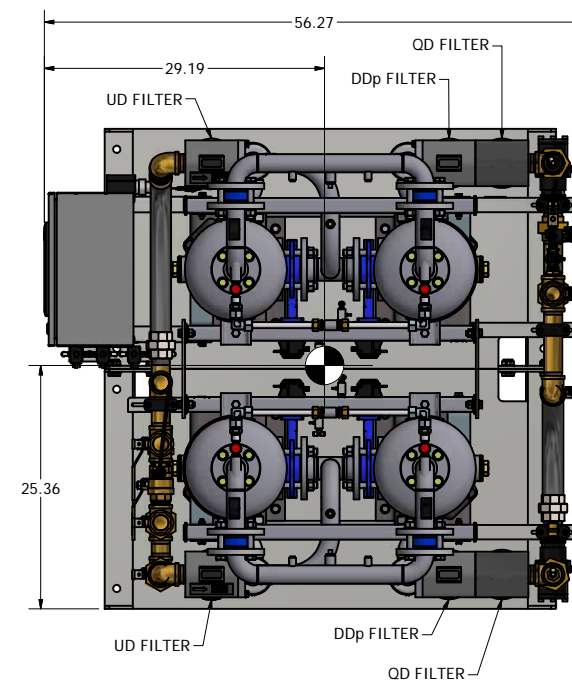
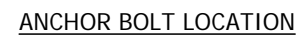
Tolerances, if not indicated, according to:			
ATLAS COPCO STANDARD CLASS			
Name	DIMENS.		ZT30-45 MED
Material	NOT APPLICABLE		112X1 / 3
Treatment	Not Applicable		INV
Scale	1:10	Family	A/Compare
Drawn by	sraman	Blank nr.	Replaces
Version Dwg	02.13	Blank wt.	0 kg
Des checked.	Prod checked.	Approved.	Date 2009.01-09
Approved			9820576800

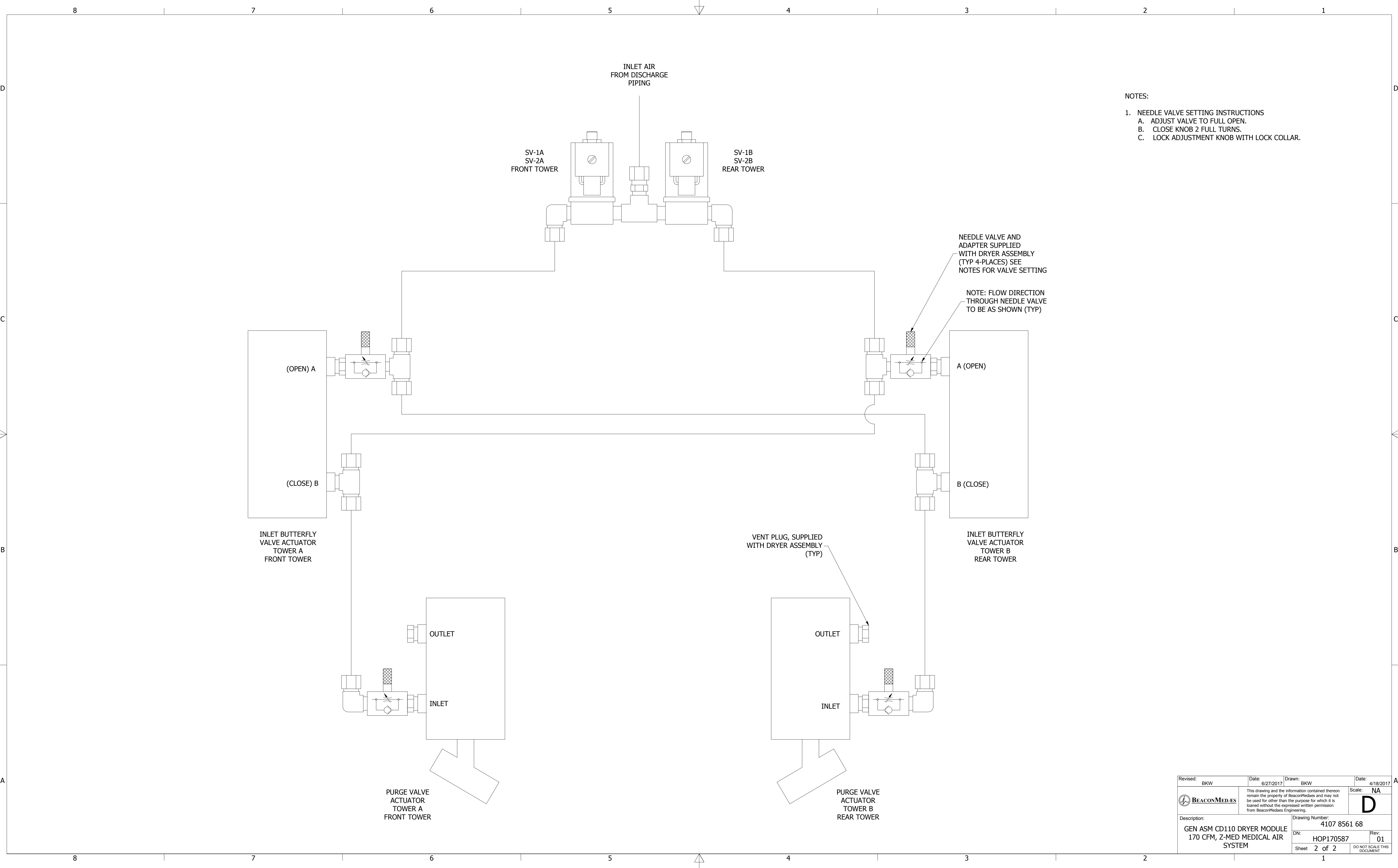


Sheet 1 / 1

5.  INDICATES CENTER OF GRAVITY.

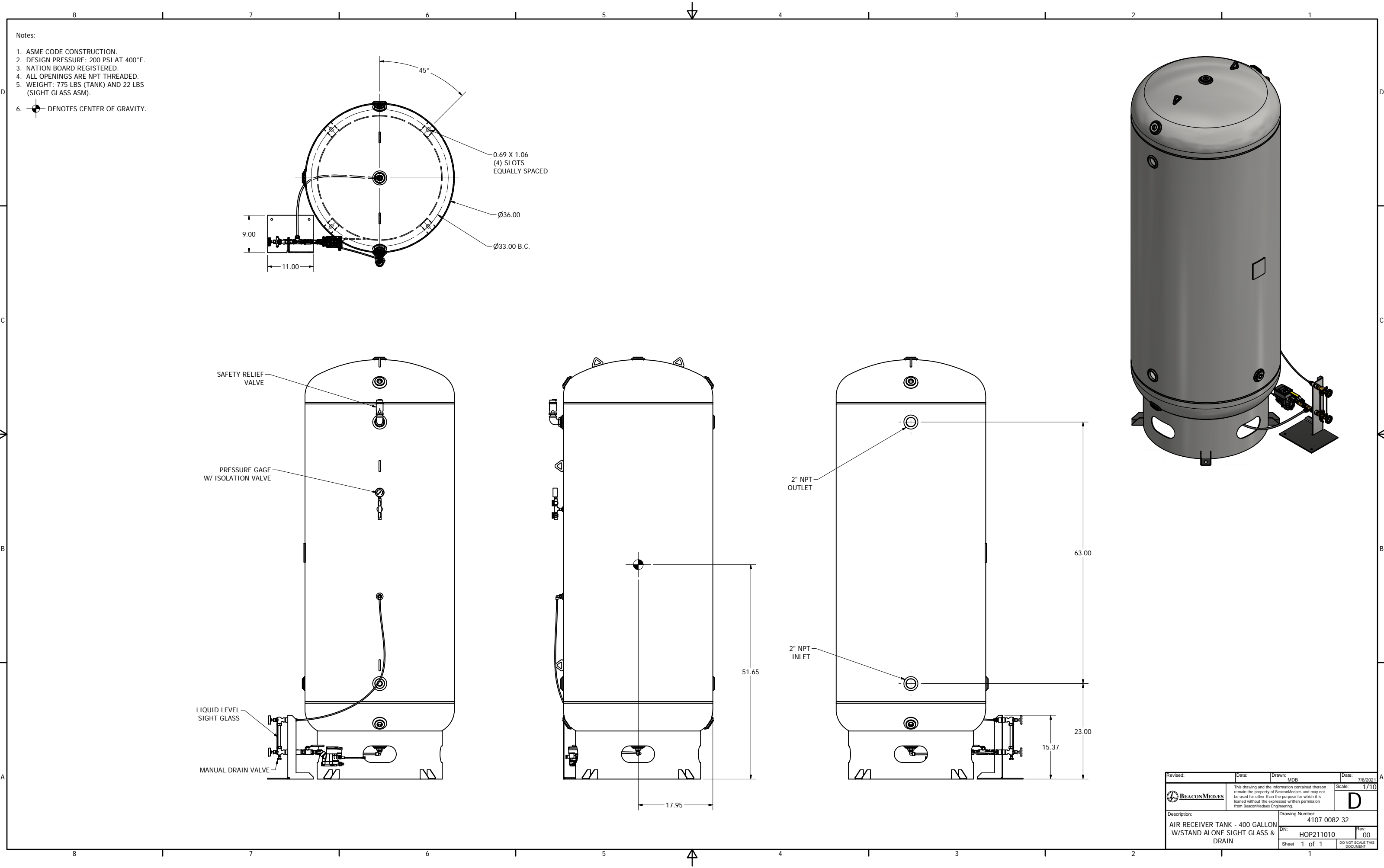
1. ALLOW A MINIMUM OF (2) FEET ON ALL SIDES OF DRYER PACKAGE FOR PROPER VENTILATION AND MAINTENANCE.
2. BASEFRAMES ARE SHIPPED TOGETHER AND CAN BE UNBOLTED FOR PASSAGE THROUGH A STANDARD DOOR.
3. SHIPPING WIGHT: 1798 LBS.
4. SYSTEM CAPACITY: 170 CFM.





- NOTES:
- NEEDLE VALVE SETTING INSTRUCTIONS
 - ADJUST VALVE TO FULL OPEN.
 - CLOSE KNOB 2 FULL TURNS.
 - LOCK ADJUSTMENT KNOB WITH LOCK COLLAR.

Revised: BKW	Date: 6/27/2017	Drawn: BKW	Date: 4/18/2017
	This drawing and the information contained therein remain the property of BeaconMedaes and may not be used for other than the purpose for which it is loaned without the expressed written permission from BeaconMedaes Engineering.		Scale: NA
			D
Description: GEN ASM CD110 DRYER MODULE 170 CFM, Z-MED MEDICAL AIR SYSTEM		Drawing Number: 4107 8561 68	
DN: HOP170587		Rev: 01	
Sheet 2 of 2		DO NOT SCALE THIS DOCUMENT	



Revised:	Date:	Drawn: MDB	Date: 7/8/2021
BEACONMEDES	This drawing and the information contained therein remain the property of BeaconMedes and may not be used for other than the purpose for which it is loaned without the expressed written permission from BeaconMedes Engineering.		Scale: 1/10
Description: AIR RECEIVER TANK - 400 GALLON W/STAND ALONE SIGHT GLASS & DRAIN		Drawing Number: 4107 0082 32	Rev: 00
Sheet 1 of 1		DN: HOP211010	DO NOT SCALE THIS DOCUMENT