

Note X:
 - Dimension drawing standardized
 - Air inlet flange details added
 - Mk-IV Elektronikon changed to Mk5

03	See Note X	2011-05-20	Ingev./Goedg.
Ed	Posi- tion	Datum Date	Intr./Appd.

Type	Pack
ZR30	2535
ZR37	2646
ZR45	2694

Dim.	Pack
W	20.3
L	38.0
H	23.9

All materials supplied are in compliance with the requirements of the List of Prohibited Substances

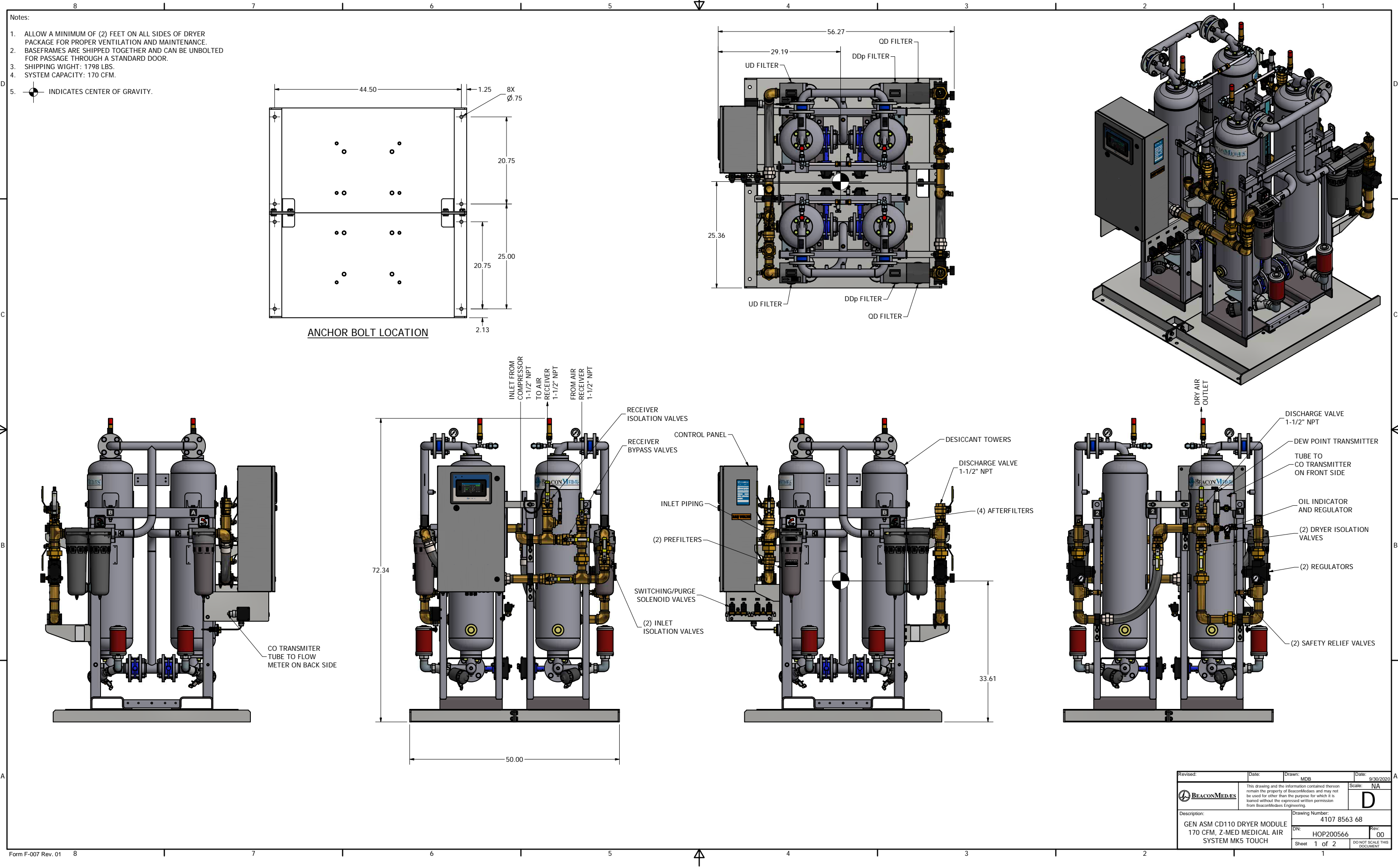
9820576900	02.11
Parent 3D model	Ed. - Version 3D

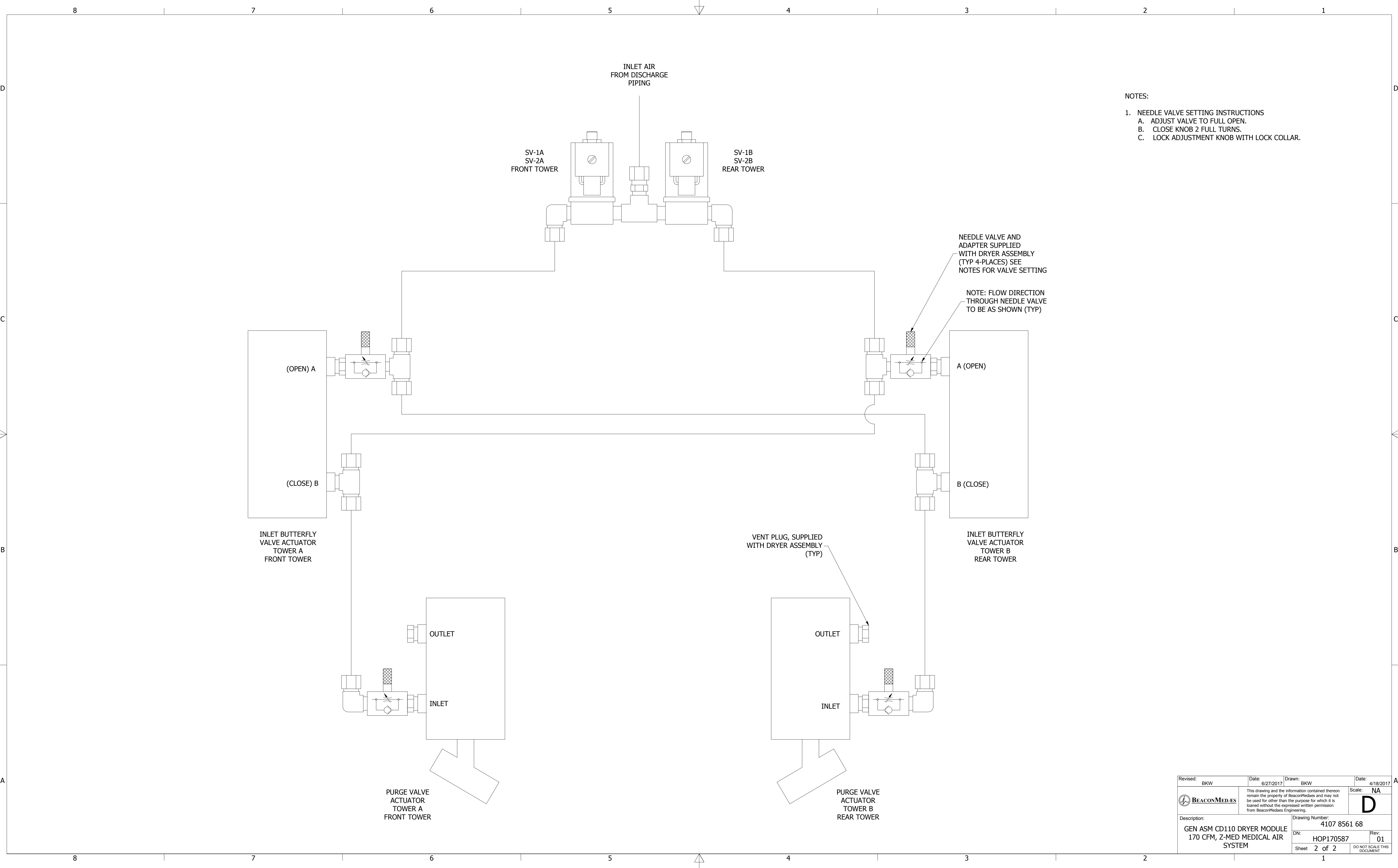
Tolerances, if not indicated, according to:					
ATLAS COPCO STANDARD CLASS					
Name	DIMENS.		ZR30-45 MED		Secrecy Class
Material	NOT APPLICABLE				1102 K / 3
Treatment	Not Applicable				INV
Scale	1:10	Family	A / Compare		Blank nr.
Drawn by	sraman	Blank nr.	Replaces		
Version Drwg	03.10	Blank wt.	0 Kg	Finl wt.	339.256 Kg
Des checked.		Prod checked.		Approved.	Date 2008-01-22
Approved					9820576900



Sheet 1 / 1


9820576900

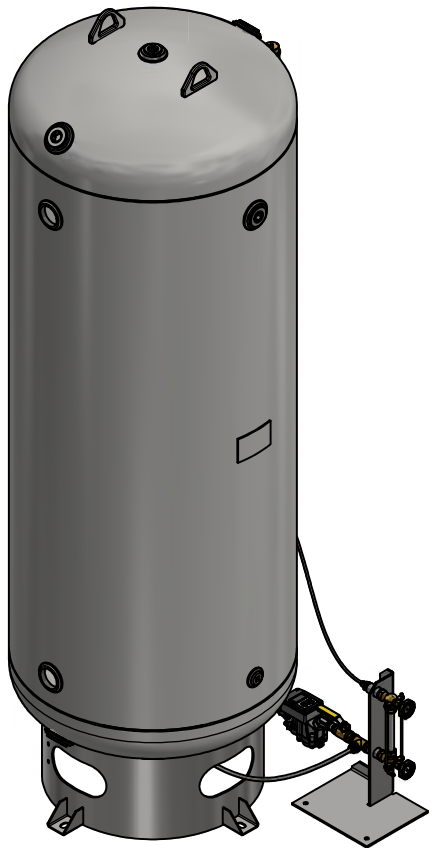
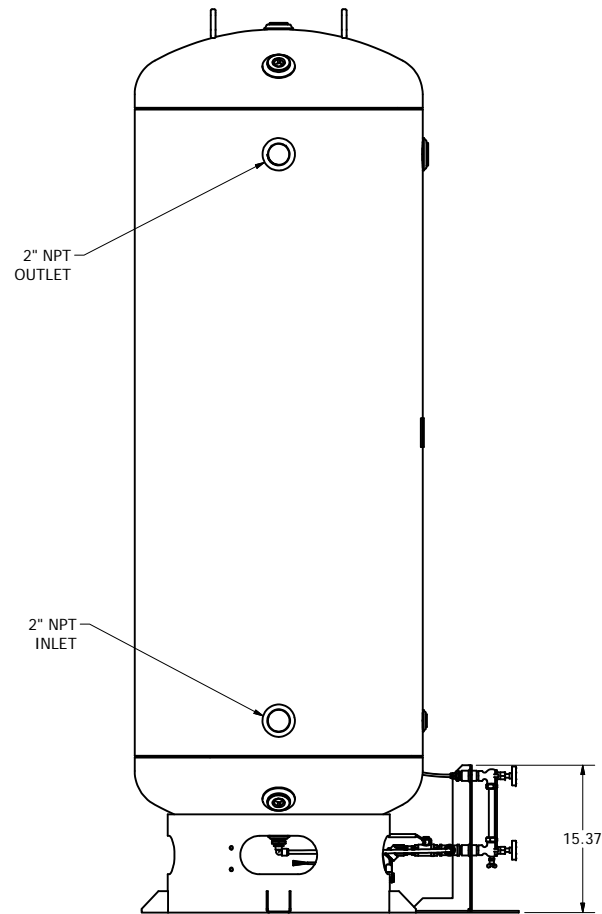
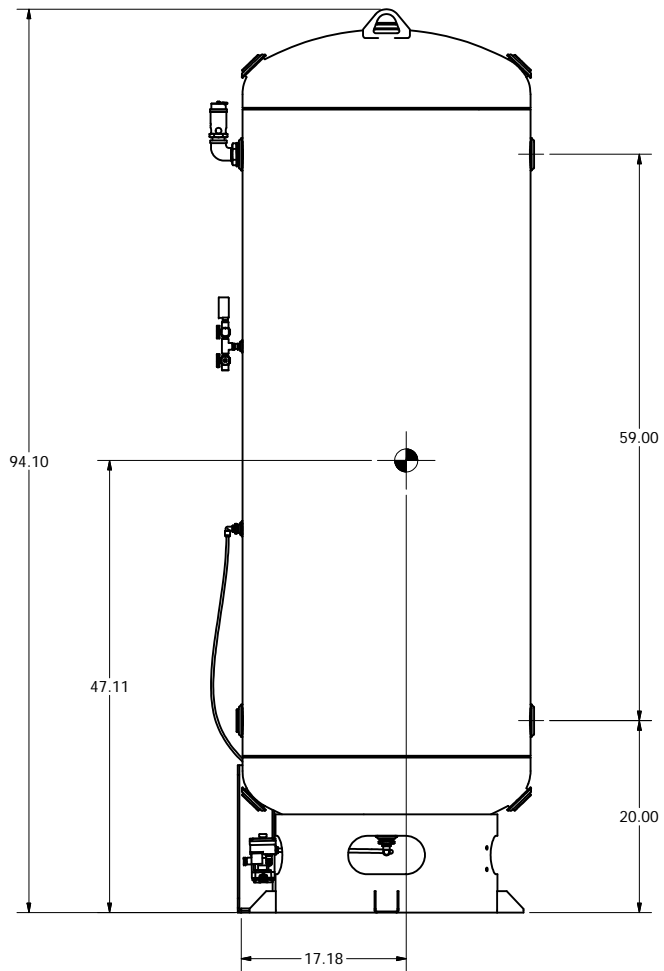
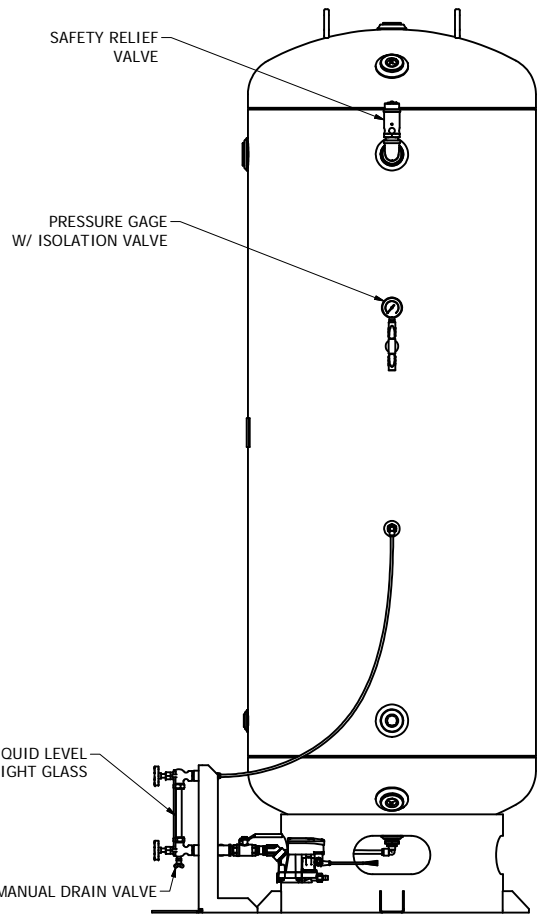
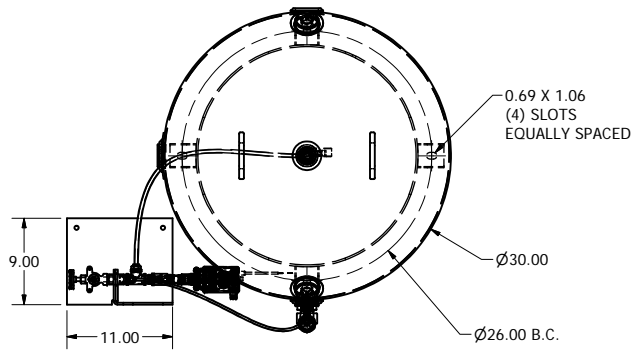





- NOTES:
- NEEDLE VALVE SETTING INSTRUCTIONS
 - ADJUST VALVE TO FULL OPEN.
 - CLOSE KNOB 2 FULL TURNS.
 - LOCK ADJUSTMENT KNOB WITH LOCK COLLAR.

Revised: BKW	Date: 6/27/2017	Drawn: BKW	Date: 4/18/2017
	This drawing and the information contained therein remain the property of BeaconMedaes and may not be used for other than the purpose for which it is loaned without the expressed written permission from BeaconMedaes Engineering.		Scale: NA
			D
Description: GEN ASM CD110 DRYER MODULE 170 CFM, Z-MED MEDICAL AIR SYSTEM		Drawing Number: 4107 8561 68	
DN: HOP170587		Rev: 01	
Sheet 2 of 2		DO NOT SCALE THIS DOCUMENT	

- Notes:
- 1. ASME CODE CONSTRUCTION.
 - 2. DESIGN PRESSURE: 200 PSI AT 400°F.
 - 3. NATION BOARD REGISTERED.
 - 4. ALL OPENINGS ARE NPT THREADED.
 - 5. WEIGHT: 520 LBS (TANK) AND 22 LBS (SIGHT GLASS ASM).
 - 6.  DENOTES CENTER OF GRAVITY.



Revised:	Date:	Drawn: MDB	Date: 7/8/2021
	This drawing and the information contained therein remain the property of BeaconMedes and may not be used for other than the purpose for which it is loaned without the expressed written permission from BeaconMedes Engineering.		Scale: 1/10
Description: AIR RECEIVER TANK - 240 GALLON W/STAND ALONE SIGHT GLASS & DRAIN		Drawing Number: 4107 0082 31	
Sheet 1 of 1		DN: HOP211010	Rev: 00
		DO NOT SCALE THIS DOCUMENT	