

| Approx. mass ±110 (LBS) | | Center of gravity ±2 (inch) | |
|-------------------------|------|-----------------------------|------|
| Type | Pack | W | Pack |
| ZT15 | 2150 | 20.4 | |
| ZT18 | 2194 | 33.0 | |
| ZT22 | 2207 | 25.2 | |

Note X:
 - Dimension drawing standardized
 - Air inlet flange details added
 - Mk-IV Elektronikon changed to Mk5

| Ed | Posi- tion | See Note X | Gevel/ged van Modified from | 2011-05-20 Datum Date | Ingev./Goedg. Intr./Appo. |
|----|---------------|------------|--------------------------------|-----------------------------|------------------------------|
| | | | | | |

Note:
 * With full open door

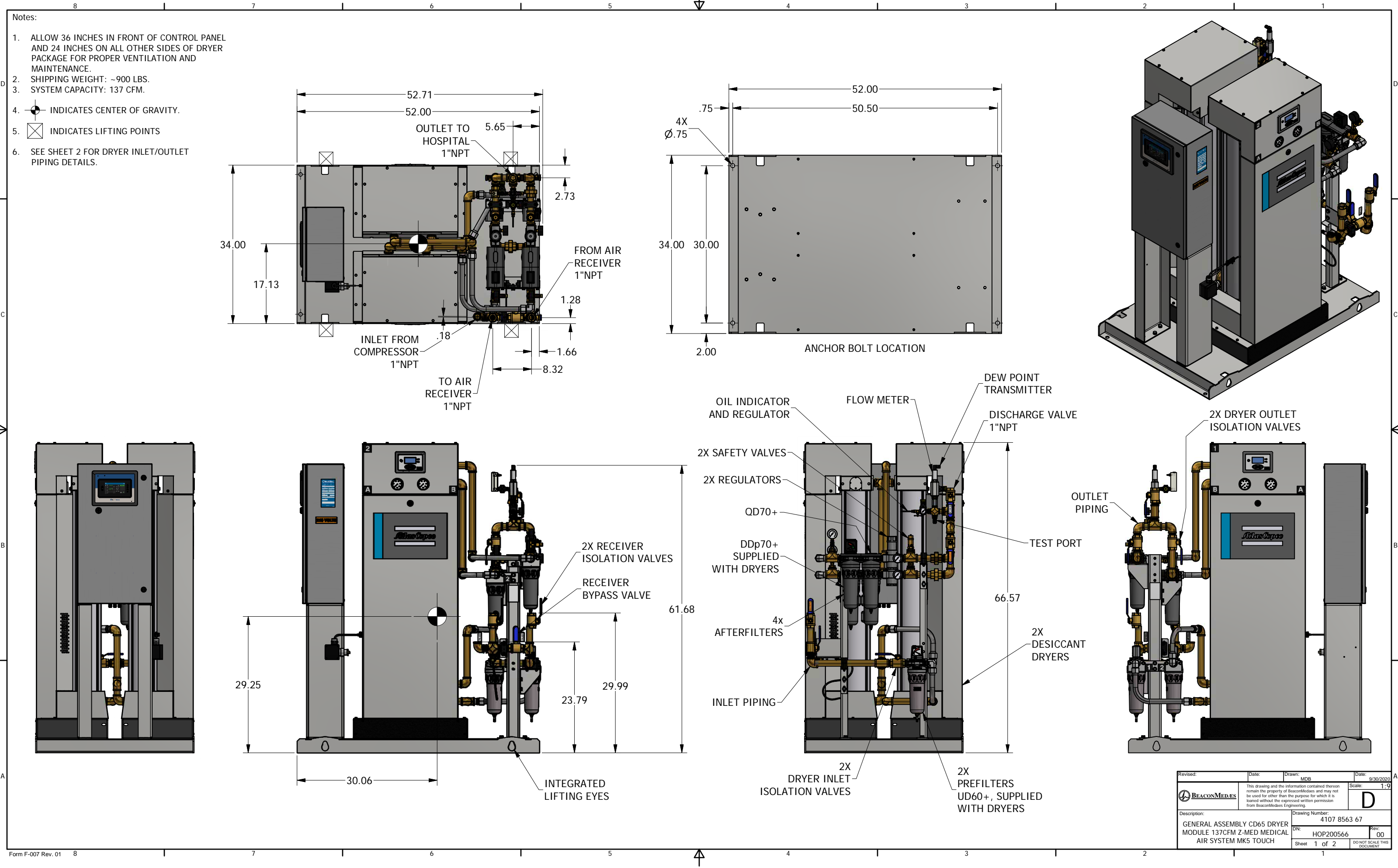
All materials supplied are in compliance with the requirements of the List of Prohibited Substances

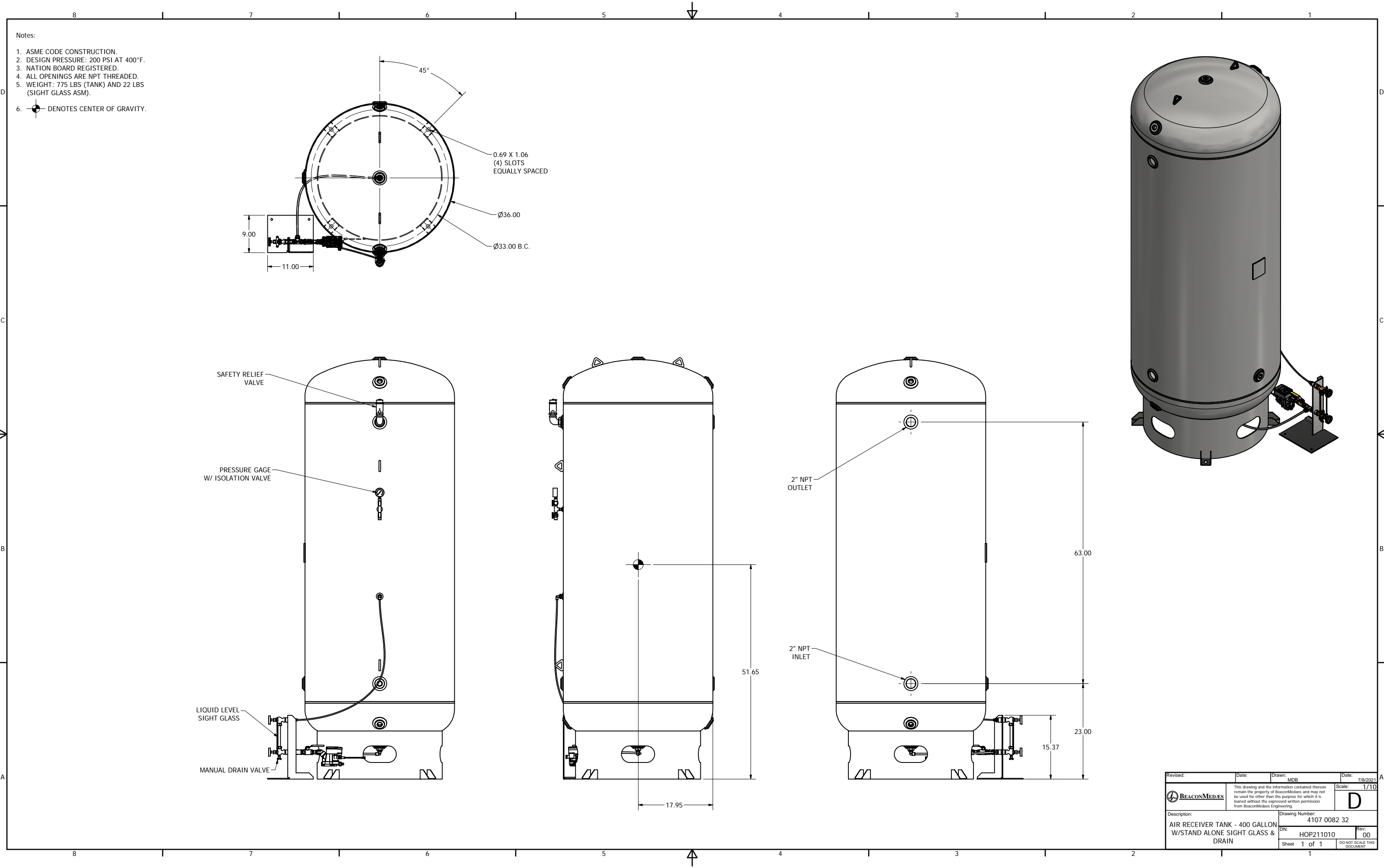
| | |
|-----------------|------------------|
| 9820576700 | 01.12 |
| Parent 3D model | Ed. - Version 3D |

| | | | |
|---|----------------|----------------------------|-----------------|
| Tolerances, if not indicated, according to: | | ATLAS COPCO STANDARD CLASS | |
| Name | DIMENS. | ZT15-22 MED | Secrecy Class |
| Material | NOT APPLICABLE | | 1/12/1/ 3 |
| Treatment | Not Applicable | | INV |
| Scale | 1:10 | Family | A1 Compare |
| Drawn by | araman | Blank nc | Replaces |
| Version Draw | 02.11 | Blank wt. | 0 kg FRI wt. |
| Des checked. | Prod checked. | Approved. | Date 2009-07-07 |
| 9820576700 | | 9820576700 | |



Sheet 1 / 1





| | | | |
|---|--|------------------------------|----------------|
| Revised: | Date: | Drawn: MDB | Date: 7/8/2021 |
| BEACONMEDES | This drawing and the information contained therein remain the property of BeaconMedes and may not be used for other than the purpose for which it is loaned without the expressed written permission from BeaconMedes Engineering. | | Scale: 1/10 |
| Description: AIR RECEIVER TANK - 400 GALLON W/STAND ALONE SIGHT GLASS & DRAIN | | Drawing Number: 4107 0082 32 | Rev: 00 |
| Sheet 1 of 1 | | DO NOT SCALE THIS DOCUMENT | |