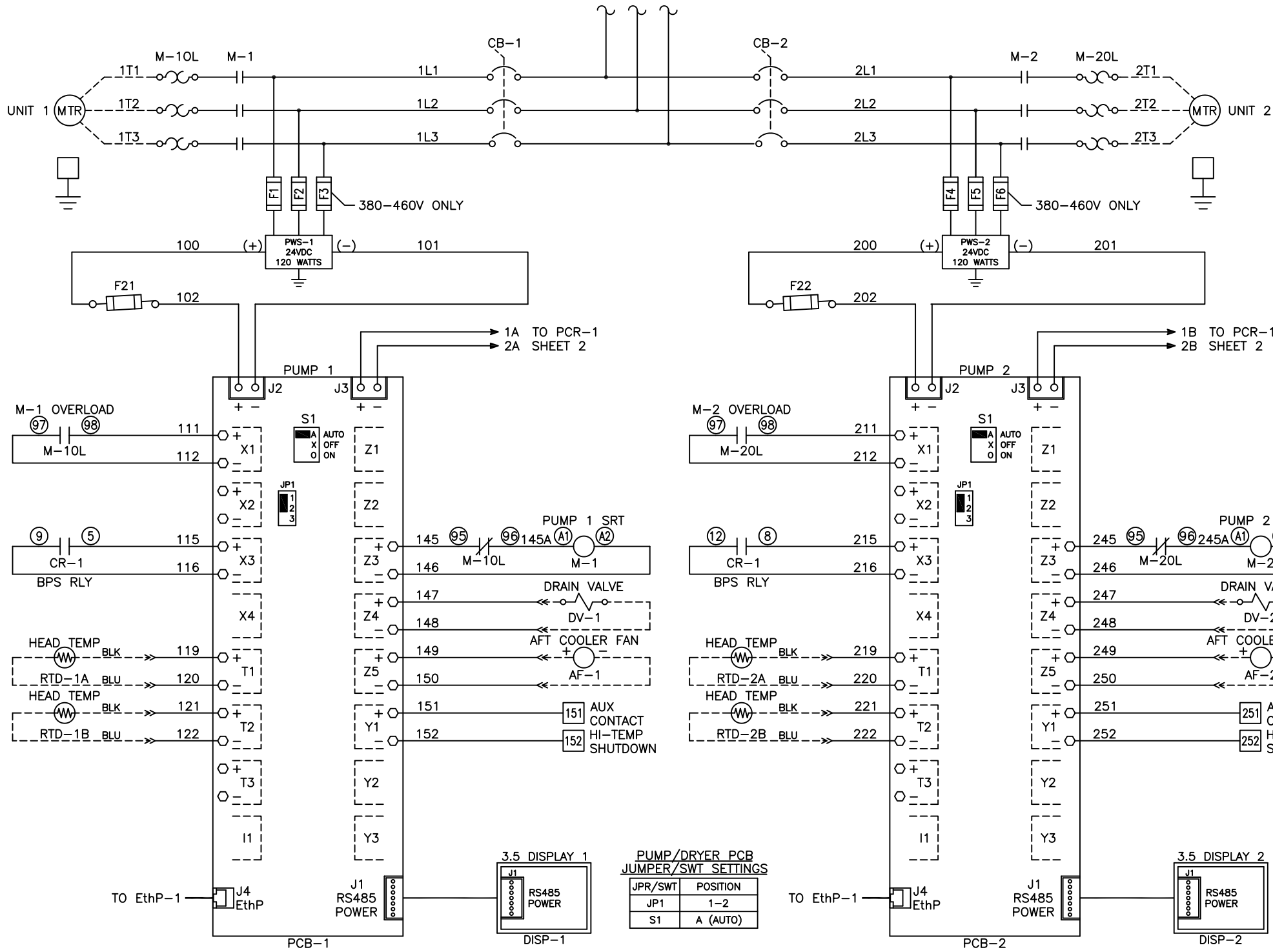
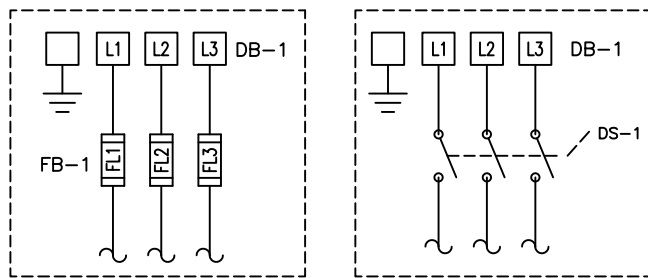


Notes:

1. MAIN DISCONNECT PROVIDED BY OTHERS
2. FIELD WIRING TO BE COPPER RATED FOR 75°C MINIMUM.
3. ----- INDICATES FIELD WIRING OUTSIDE OF BOX.
4. AUXILIARY CONTACTS LIST ON SHEET 2.
5. THE AMPACITY OF CONDUCTORS SUPPLYING THE CONTROL PANEL TO BE ROUNDED UP TO THE NEXT SIZE LARGER STANDARD WIRE GAUGE.
6. MOP VALUES TO BE ROUNDED DOWN TO THE NEAREST STANDARD RATING OF THE OVERCURRENT PROTECTION DEVICE.
7. SHORT CIRCUIT CURRENT RATING (SCCR): 65kA

2.4 & 3.5HP 208-460V
6.4HP 380-460V
SCCR: 65 kA

6.4HP 208-230V
SCCR: 65 kA



MINIMUM CIRCUIT AMPACITY (MCA)

SYSTEM HP	208 V	230 V	460 V	SYSTEM HP	380/400V/50Hz
2.4HP/1.8kW	15.0 AMPS	13.6 AMPS	7.0 AMPS	2.0HP/1.5kW	8.9 AMPS
3.5HP/2.6kW	22.6 AMPS	20.6 AMPS	10.5 AMPS	3.0HP/2.2kW	13.4 AMPS
6.4HP/4.8kW	32.0 AMPS	29.1 AMPS	14.8 AMPS	5.4HP/4.0kW	18.8 AMPS

MAXIMUM OVERCURRENT PROTECTION (MOP)

SYSTEM HP	208 V	230 V	460 V	SYSTEM HP	380/400V/50Hz
2.4HP/1.8kW	34.5 AMPS	31.2 AMPS	15.6 AMPS	2.0HP/1.5kW	19.8 AMPS
3.5HP/2.6kW	54.3 AMPS	49.4 AMPS	24.7 AMPS	3.0HP/2.2kW	31.5 AMPS
6.4HP/4.8kW	78.7 AMPS	71.5 AMPS	35.8 AMPS	5.4HP/4.0kW	45.5 AMPS

DUPLEX SYSTEM FULL LOAD AMPERES

SYSTEM HP	208 V	230 V	460 V	SYSTEM HP	380/400V/50Hz
2.4HP/1.8kW	15.8 AMPS	14.9 AMPS	7.6 AMPS	2.0HP/1.5kW	7.6 AMPS
3.5HP/2.6kW	24.0 AMPS	21.7 AMPS	11.0 AMPS	3.0HP/2.2kW	11.2 AMPS
6.4HP/4.8kW	41.6 AMPS	37.7 AMPS	19.0 AMPS	5.4HP/4.0kW	18.6 AMPS

INDIVIDUAL FULL LOAD AMPERES

SYSTEM HP	208 V	230 V	460 V	SYSTEM HP	380/400V/50Hz
2.4HP/1.8kW	7.2 AMPS	6.8 AMPS	3.4 AMPS	2.0HP/1.5kW	3.3 AMPS
3.5HP/2.6kW	11.3 AMPS	10.2 AMPS	5.1 AMPS	3.0HP/2.2kW	5.1 AMPS
6.4HP/4.8kW	20.1 AMPS	18.2 AMPS	9.1 AMPS	5.4HP/4.0kW	8.8 AMPS

FUSE SELECTION CHART (MAX FUSE SIZES SHOWN)

SYSTEM HP	FUSES	208 V	230 V	380/400 V	460 V
2.4 HP	FL1/FL2/FL3	20 AMPS	20 AMPS	12 AMPS	12 AMPS
3.5 HP		30 AMPS	30 AMPS	15 AMPS	15 AMPS
6.4 HP		---	---	25 AMPS	25 AMPS
ALL	F1/F2/F4/F5	6 AMPS	6 AMPS	6 AMPS	6 AMPS
	F3/F6	---	---	6 AMPS	6 AMPS
	F21/F22	4.0 AMPS	4.0 AMPS	4.0 AMPS	4.0 AMPS
	F31/F32/F33/F34	1.0 AMPS	1.0 AMPS	1.0 AMPS	1.0 AMPS
	F35	0.5 AMPS	0.5 AMPS	0.5 AMPS	0.5 AMPS

FL1/FL2/FL3 ARE LITTELFUSE JTD 600V TYPE
F1-F6 ARE LITTELFUSE KLDL 600V TYPE
F21-F22/F31-F35 ARE LITTELFUSE 2AG 250V TYPE

DEFAULT PUMP PSI SETTINGS

PUMP SEQUENCE	PSI
LEAD CUT-OFF	100
LAG CUT-ON	80

BACKUP PRESSURE SWT SETTINGS

BPS-1 CUT-OFF	PSI
BPS-1 CUT-ON	75

AUTO OPERATION:

DURING NORMAL OPERATION, THE MASTER PCB WILL SIGNAL THE LEAD COMPRESSOR TO START WHEN THE PRESSURE FALLS BELOW SETPOINT FOR THE LEAD PUMP. IF ONE PUMP CAN CARRY THE LOAD, THE PRESSURE WILL RISE TO 100 PSI.

THE MASTER PCB WILL SIGNAL THE PUMP PCB TO TURN OFF THE LEAD COMPRESSOR. WHEN THE SYSTEM PRESSURE DROPS AGAIN BELOW 90 PSI, THE MASTER PCB WILL SEQUENCE THE LEAD ROLE TO THE NEXT COMPRESSOR, AND IT WILL START. IF ANY LEAD COMPRESSOR RUNS FOR MORE THAN 17 MINUTES AND CANNOT REACH 100 PSI, THE MASTER PCB WILL TURN OFF THE COMPRESSOR THAT IS RUNNING AND SEQUENCE TO THE OTHER COMPRESSOR. IF DURING OPERATION THE PRESSURE FALLS BELOW 80 PSI, THE LAG COMPRESSOR WILL START AND A LAG ALARM WILL OCCUR.

PUMP PCB S1 POSITION:

POSITION (A) - AUTO (DEFAULT):
THE PUMP WILL OPERATE NORMALLY AS DESCRIBED ABOVE IN "AUTO OPERATION".
POSITION (X) - OFF:
THE PUMP IS DISABLED FROM RUNNING.
POSITION (O) - MANUAL:
THE PUMP WILL START AND STOP ON THE BACK UP PRESSURE SWITCH (BPS-1).

PCB FAULT:

IF A PUMP PCB ETHERNET FAULT OR A TRANSDUCER FAULT OCCURS, THE PUMP PCB WILL AUTOMATICALLY SWITCH TO MANUAL MODE. COMPRESSORS WILL START WHEN BPS-1 (BACKUP PRESSURE SWITCH) CLOSES AND STOP WHEN IT OPENS. COMPRESSORS WILL NOT SEQUENCE IN THIS CONDITION; AND CAN OPERATE UNTIL THE ETHERNET OR TRANSDUCER FAULT IS REPAIRED.

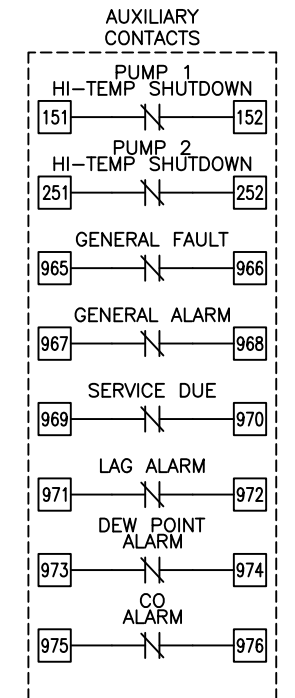
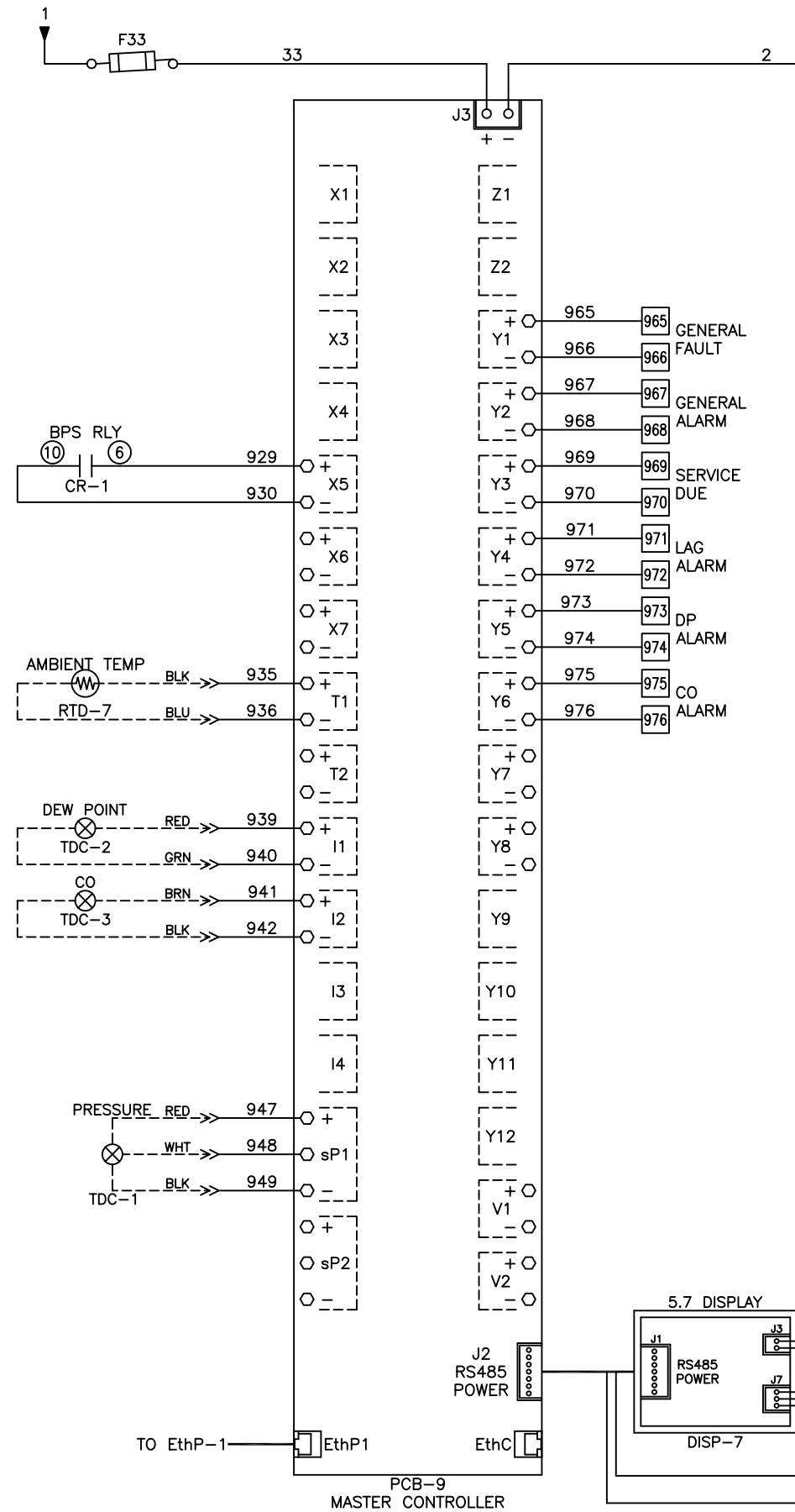
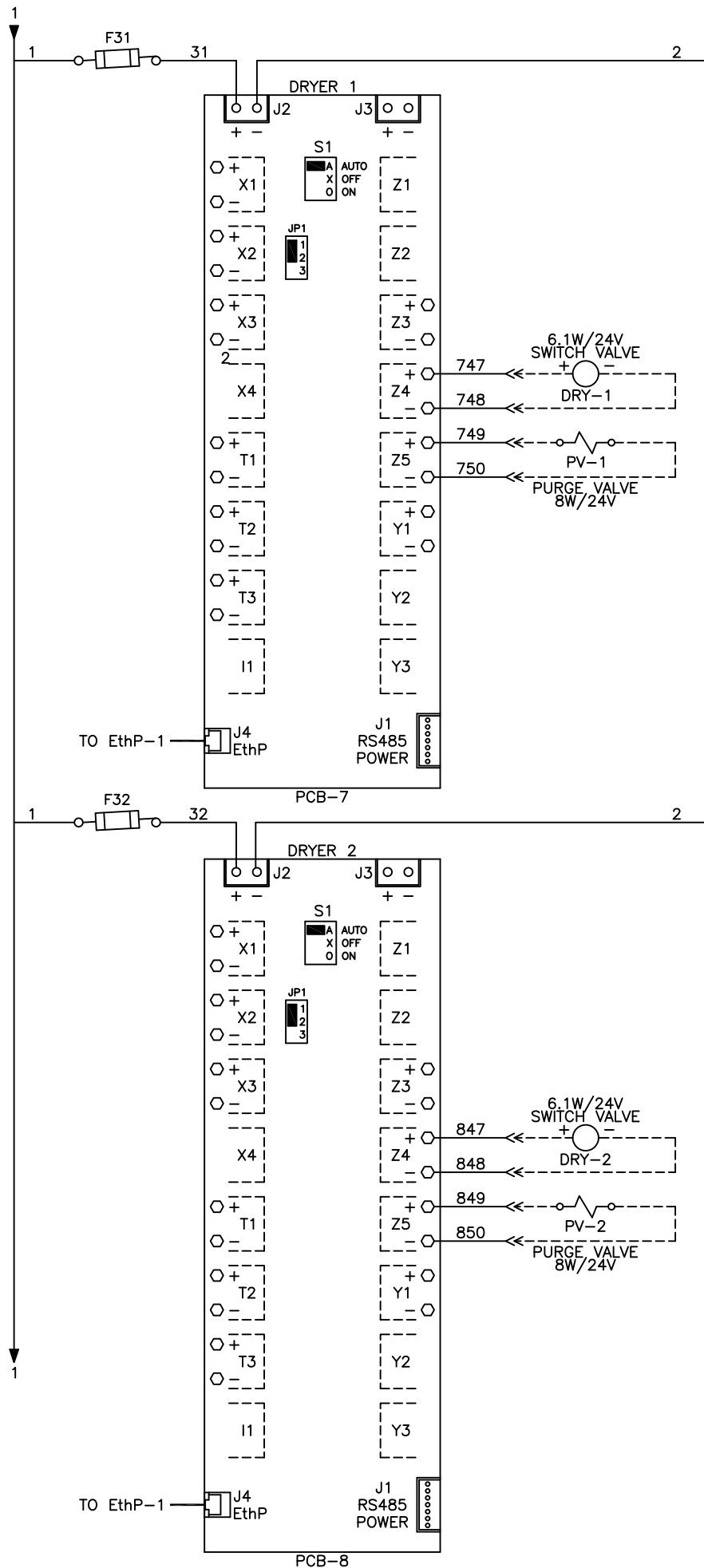
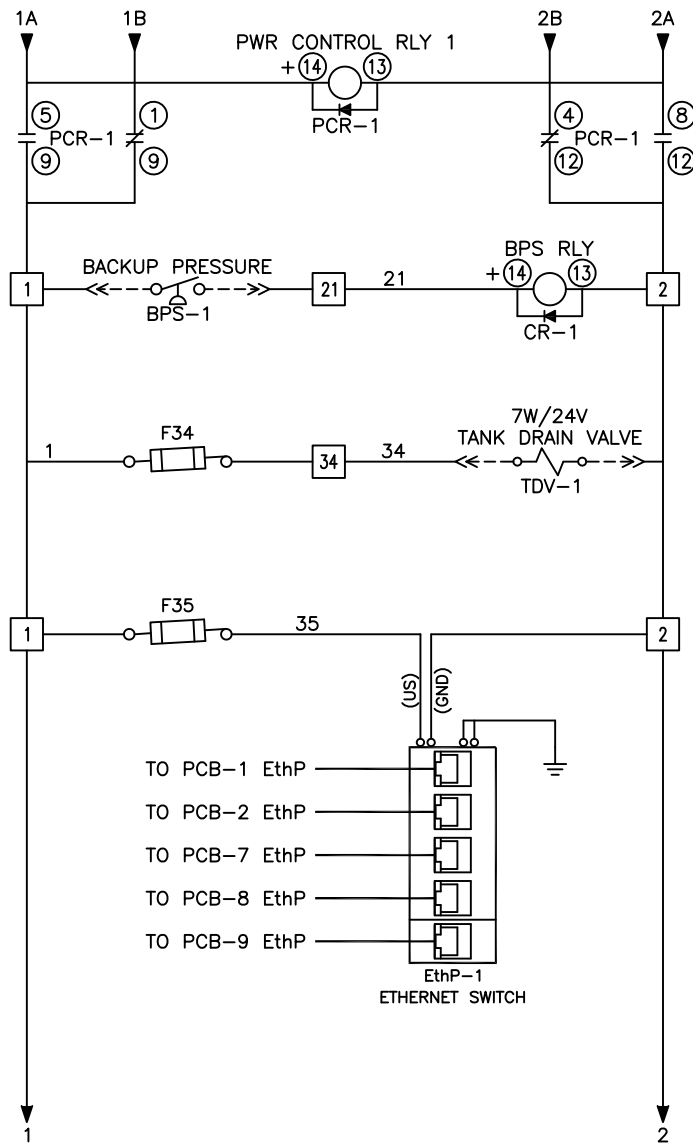
PUMP/DRYER PCB JUMPER/SWT SETTINGS

JPR/SWT	POSITION
JP1	1-2
S1	A (AUTO)

Revised:	Date:	Drawn:	MOB	Date:	01/11/19
		<small>This drawing and the information contained thereon remain the property of BeaconMedex and may not be used for other than the purpose for which it is issued without the expressed written permission from BeaconMedex Engineering.</small>		Scale:	NTS
Description: DWG WIRING CONTROL DX RECIP 2-6.4HP 65KA 208-575/3/50-60		Part Number: 4107 8569 08		Rev:	00
Sheet 1 of 2		DO NOT SCALE THIS DOCUMENT			

Notes:

1. FIELD WIRING TO BE COPPER RATED FOR 75°C MINIMUM.

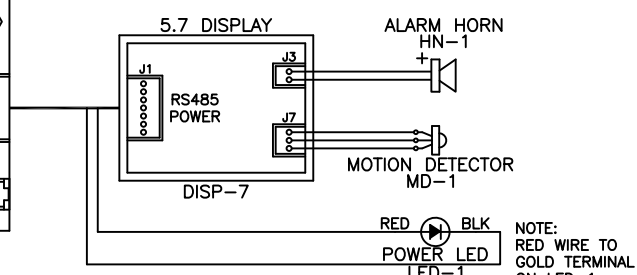


SPARE TERMINALS: x4
 X X X X

NOTE:
 AUXILIARY CONTACTS
 151-152, 251-252, &
 965-976 ARE "CLASS 1
 CONTROL CIRCUITS. USE
 CLASS 1 CONDUCTORS."

AUX CONTACTS ARE RATED
 0.7A_{dc}/0.7A_{rms} @ 24V
 MAX. UNLESS OTHERWISE
 NOTED.

AUX CONTACTS CLOSED
 DURING NORMAL
 OPERATION.



Revised:	Date:	Drawn:	MDB	Date:	01/11/19
<small>This drawing and the information contained thereon remain the property of BeaconMedias and may not be used for other than the purposes for which it is loaned without the expressed written permission from BeaconMedias Engineering.</small>					
Description:		Part Number:			
DWG WIRING CONTROL		4107 8569 08			
DX RECIP 2-6.4HP 65KA		DN:	HOP 180863	Rev:	00
208-575/3/50-60		Sheet 2 of 2		DO NOT SCALE THIS DOCUMENT	