

### Definition of Statements

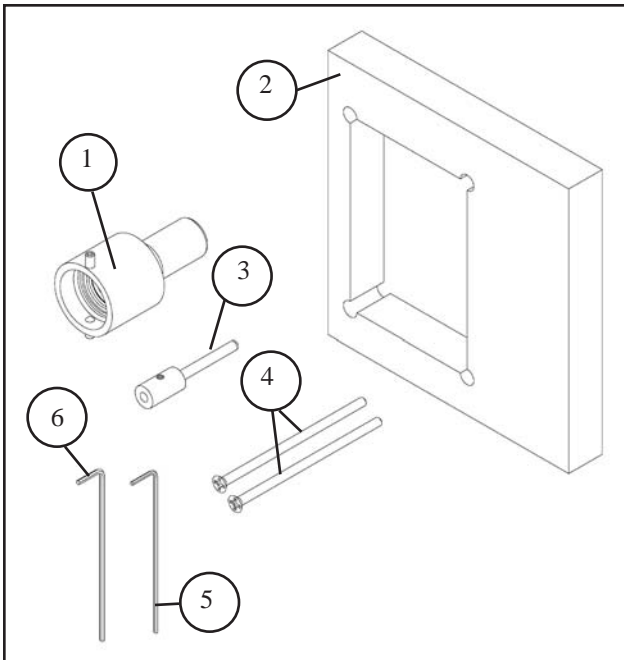
Statements in these instructions preceded by the following words are of special significance.

**! WARNING:** Means there is a possibility of injury or death to yourself or others.

**! CAUTION:** Means there is a possibility of damage to unit or other property.

**NOTE:** Indicates points of particular interest for more efficient and convenient operation.

### Kit Contents



Item	Qty	Description
1	1	Extension adapter with seal and set screws
2	1	5/8" Stand-off (in Kit 231002-00 only)
3	1	Indexing pin extension with set screw
4	2	#6-32 x 3", pan head screw
5	1	.050" hex key wrench
6	1	1/16" hex key wrench

### Required Tools

Tape Measure or Ruler

Philips Type Screw Driver

### Installation

#### Step 1: Initial Preparation

Measure wall depth from outlet rough-in to finished wall surface (Figure 1).



**Figure 1**

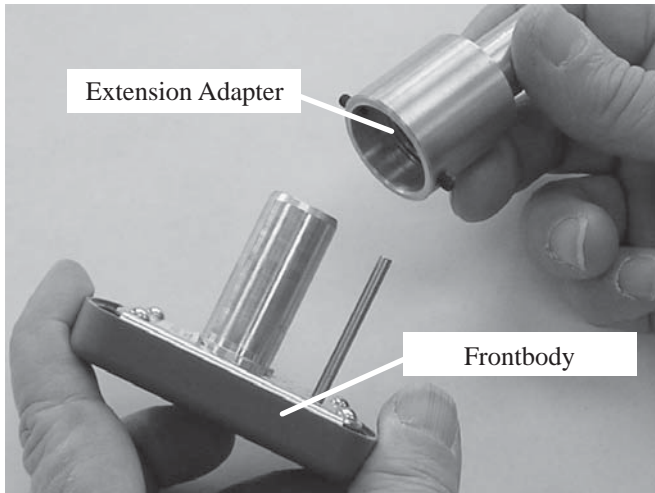
- If wall depth is between 1-1/4" and 1-3/4", 5/8" stand-off will be required for proper installation, so Kit 231002-00 must be ordered.
- If wall depth is between 1-3/4" and 2-1/8", Kit 4107 2121 66 can be ordered, which does not include the 5/8" stand-off.
- Maximum wall depth cannot exceed 2-1/8".

Remove existing #6-32 x 1-7/8" screws from frontbody.

## Installation

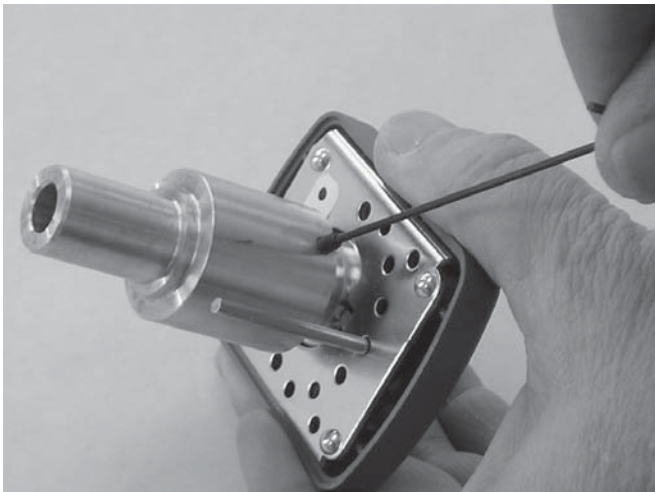
### Step 2: Assemble Extension Adapter to Latch Valve

Remove adapter from poly bag and install onto latch valve (Figure 2).



**Figure 2**

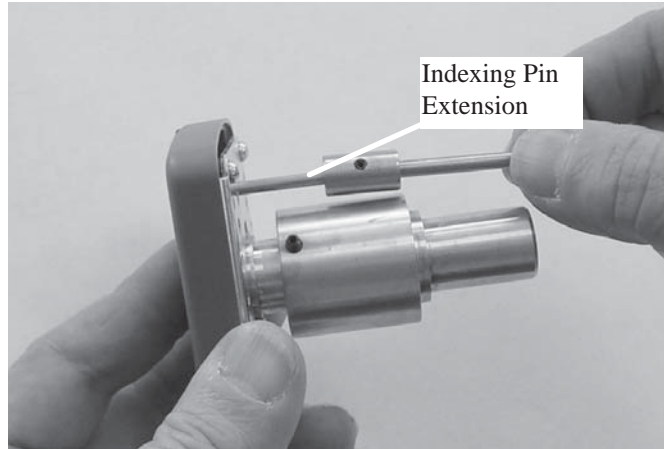
Push extension adapter fully onto latch valve and tighten two set screws with 1/16" hex key wrench (Figure 3).



**Figure 3**

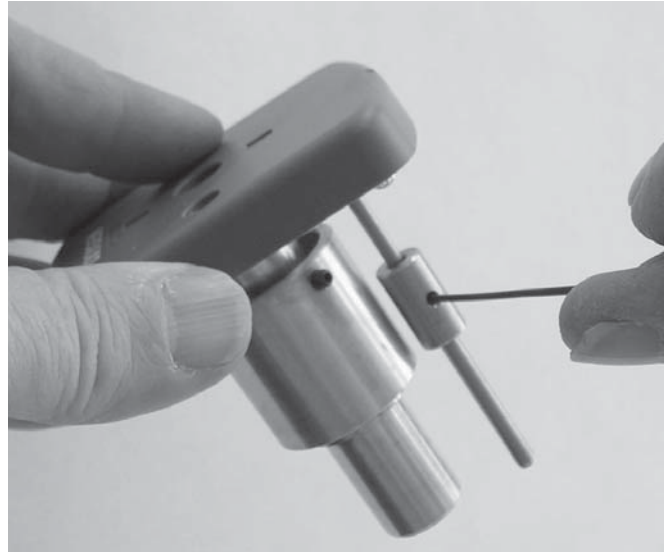
### Step 3: Assemble Indexing Pin Extension to Frontbody

Remove indexing pin extension from poly bag. Slide indexing pin extension pin fully onto front body indexing pin (Figure 4).



**Figure 4**

Securely tighten set screw with .050 hex key wrench (Figure 5).



**Figure 5**

**NOTE:**

Verify indexing pin extension is not protruding more than 1/4" beyond end of extension adapter.

## Installation

### Step 4: Assemble 5/8" Stand-off and Frontbody Trim Plate (Kit 231002-00 only).

Remove 5/8" stand-off from poly bag and assemble to trim plate as shown (Figure 6 & 7).

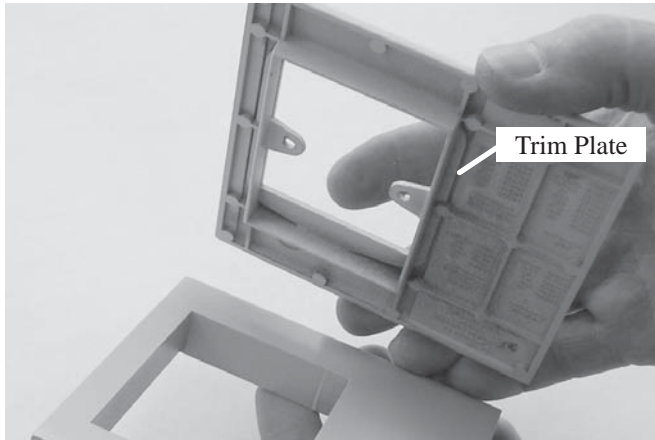


Figure 6



Figure 7

### Step 5:

Hold frontbody and trim as shown (Figure 8). It will be necessary to move frontbody to top of trim plate before lowering valve extension past ears of trim plate.

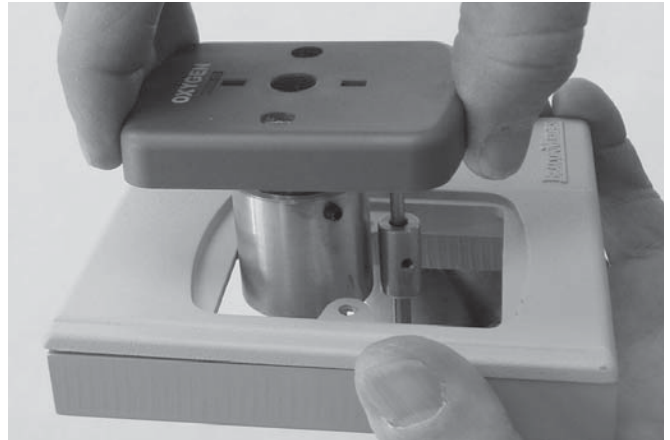


Figure 8

Completed frontbody should appear as shown (Figure 9).



Figure 9

## Installation

### Step 6:

Insert #6-32 x 3" screws from kit through frontbody and trim plate (Figure 10).

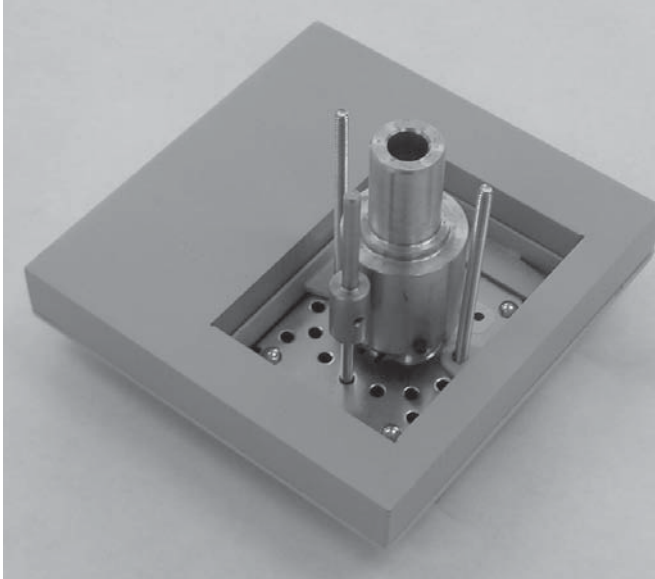


Figure 10

Insert assembly into Rough-In and secure in place by tightening two screws.



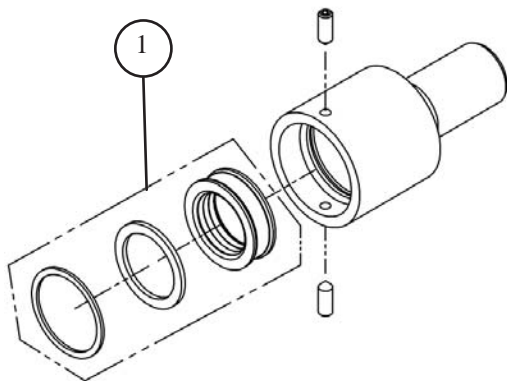
Figure 11 - Installed Assembly

### **!** WARNING:

All systems must be inspected for proper gas service, operation and leakage prior to putting into service. It is the responsibility of installer to verify gas service and proper functioning of medical gas/vacuum assembly.

## Illustrated Parts List

### Extension Valve Adapter Repair Components



Item	Part No.	Description
1	*4107 2012 26	Repair Kit, Rough-in (1 pkg for 10 outlets)

\*Kit includes:

10 each of 4107 6523 22	Retaining Ring
10 each of 4107 6523 16	Washer
10 each of 4107 6523 30	Bushing