

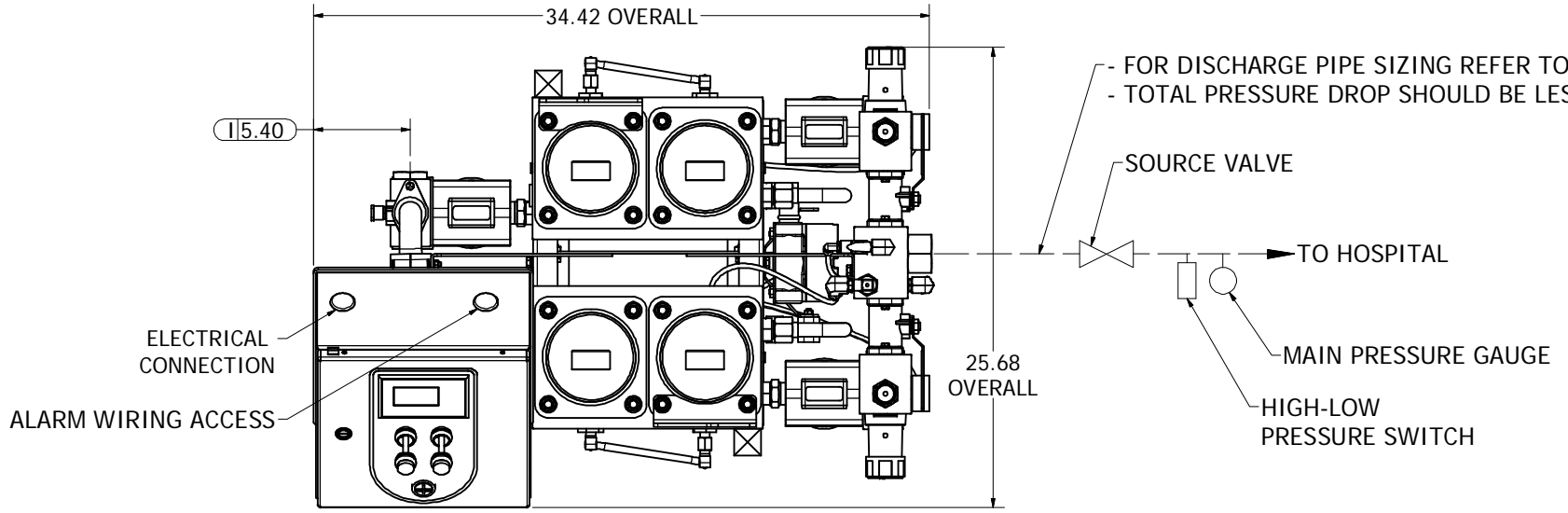
MODEL: LDD105D-DRC WEIGHT: 258 lbs

INLET FLOW: 82 SCFM @75 PSIG
 105 SCFM @100 PSIG
 (INLET FLOW IS NFPA CAPACITY)

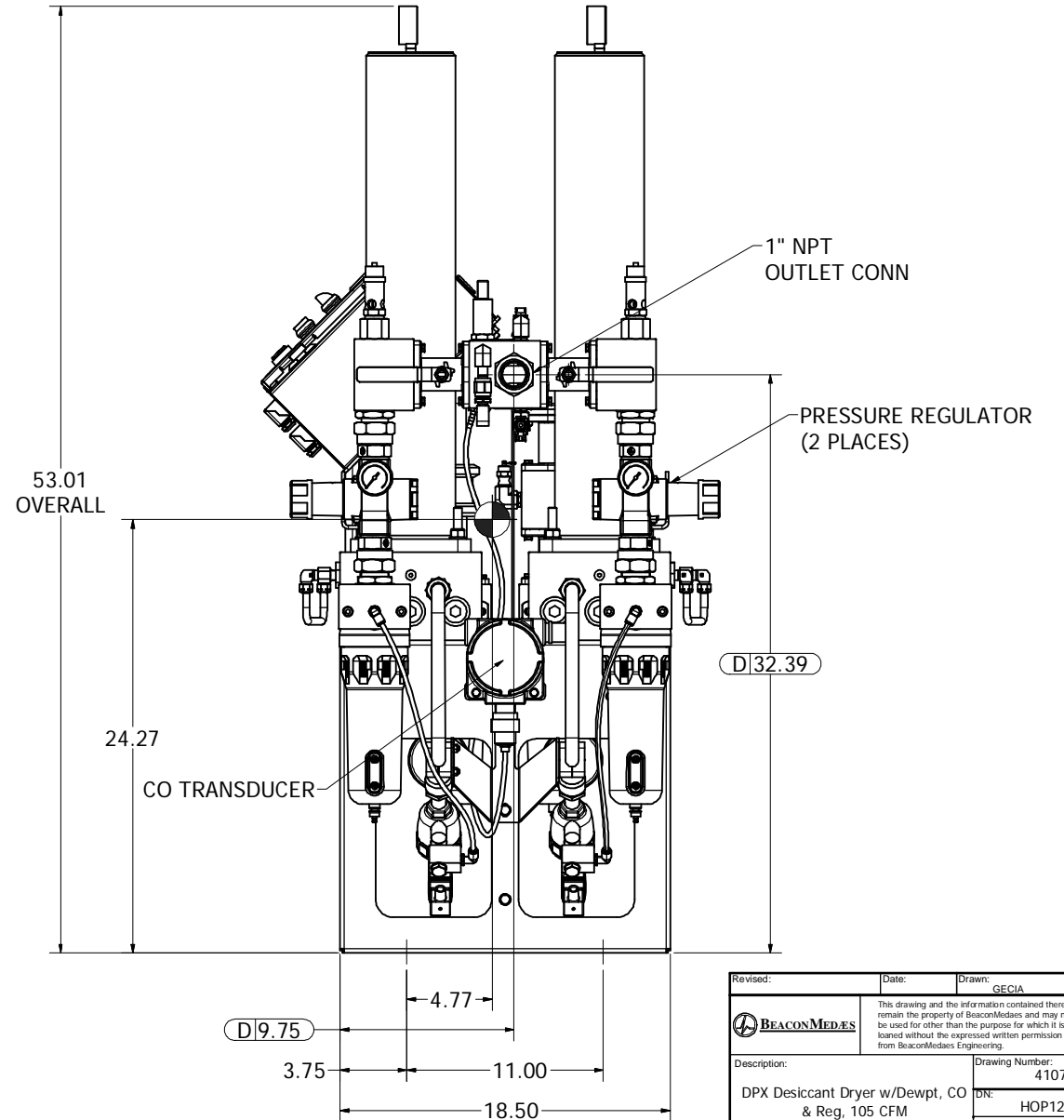
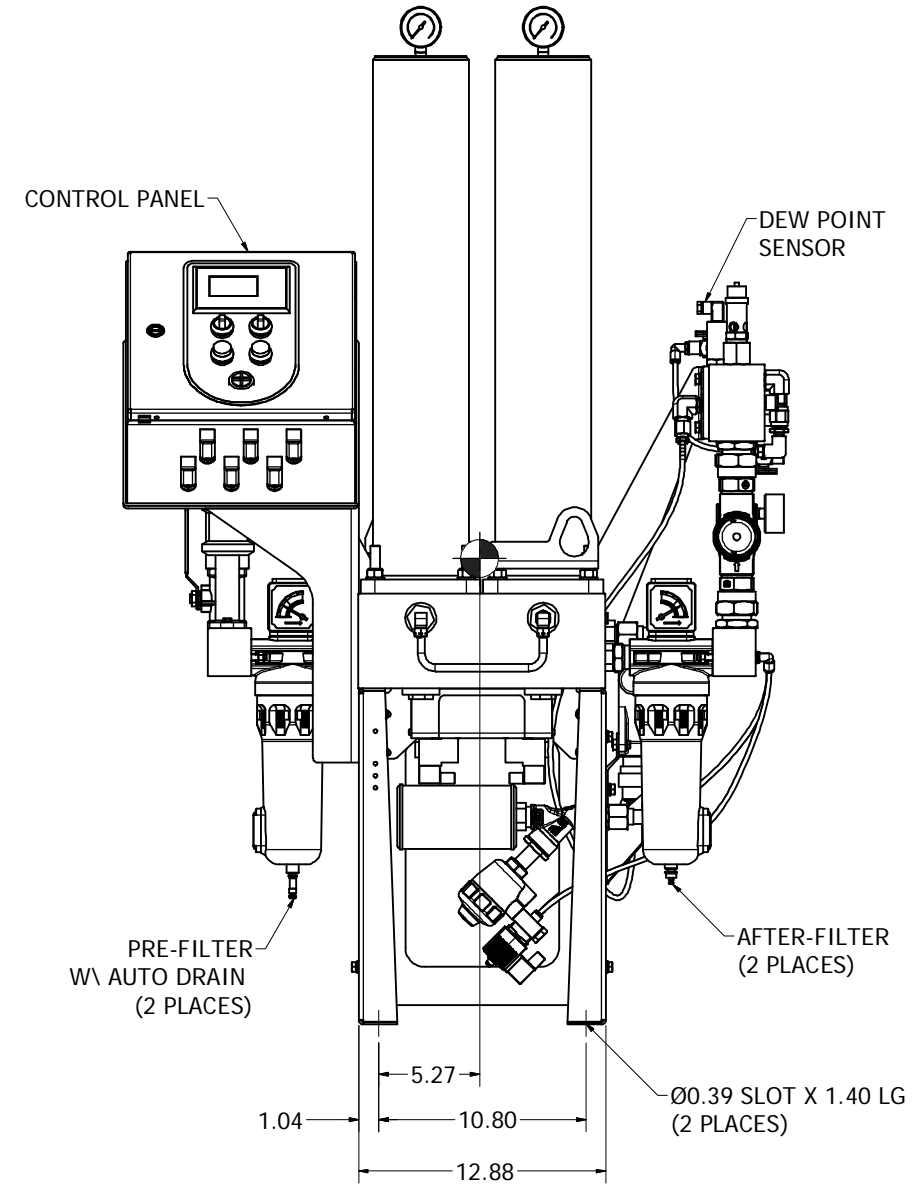
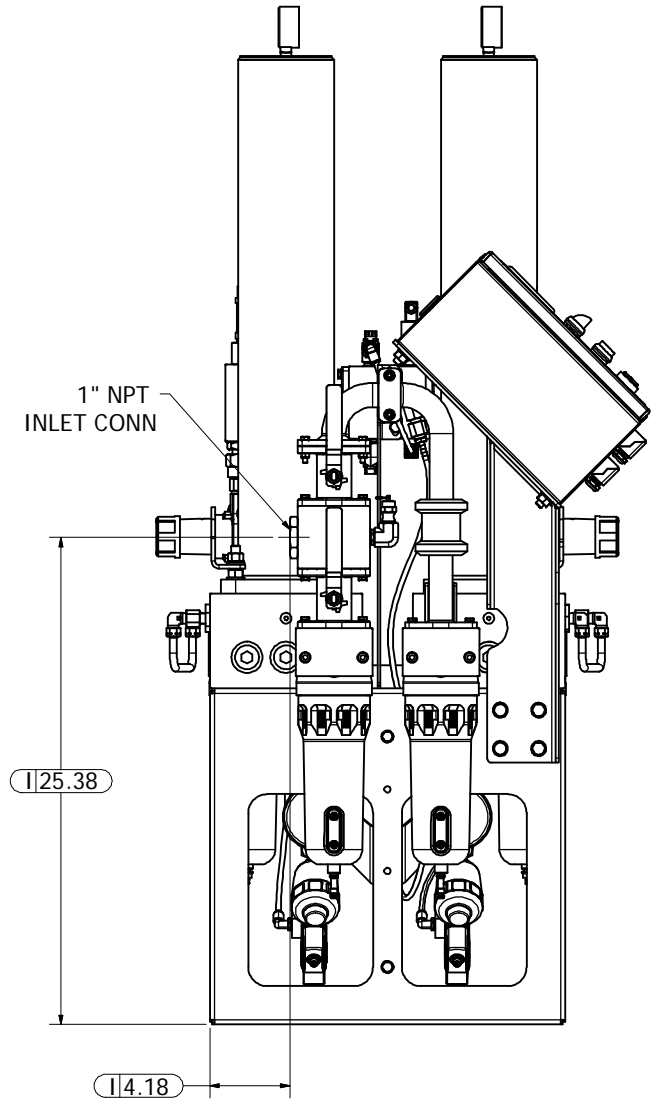
OPERATING CONDITIONS

1. ELECTRICAL: 110VAC/1PH/50-60HZ 1.2A
 230VAC/1PH/50-60HZ 0.6A
2. MINIMUM WORKING PRESSURE: 60 PSIG
3. MAXIMUM WORKING PRESSURE: 135 PSIG
4. MAXIMUM INLET TEMPERATURE: 110° F
5. ☒ INDICATES LIFTING POINTS
6. DRYER TO BE INSTALLED DOWNSTREAM OF RECEIVER
7. NOT RECOMMENDED FOR LIQUID RING APPLICATIONS

| SYSTEM CONNECTIONS | |
|--------------------|--------------------|
| ID | DESCRIPTION |
| I | INLET LOCATION |
| D | DISCHARGE LOCATION |



- FOR DISCHARGE PIPE SIZING REFER TO STANDARD PRESSURE DROP TABLES.
 - TOTAL PRESSURE DROP SHOULD BE LESS THAN 5 PSIG.



| | | | |
|--|-------|--|----------------------------|
| Revised: | Date: | Drawn: GE CIA | Date: 4/18/2013 |
| | | This drawing and the information contained therein remain the property of BeaconMedes and may not be used for other than the purpose for which it is loaned without the expressed written permission from BeaconMedes Engineering. | |
| Description: DPX Desiccant Dryer w/Dewpt, CO & Reg, 105 CFM | | Drawing Number: 4107 8540 36 | Scale: 1:6 D |
| Sheet 1 of 1 | | Rev: HOP120899 00 | DO NOT SCALE THIS DOCUMENT |