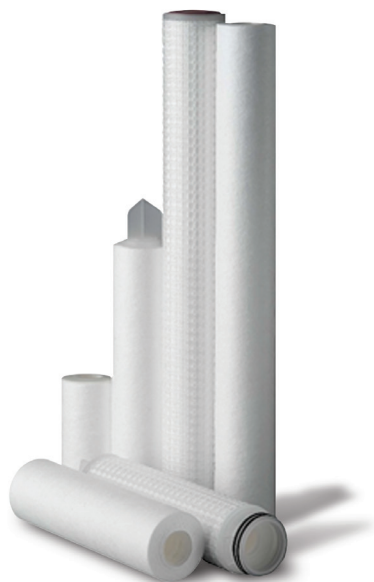




# PBP particle removal melt blown PP filters

Nominal depth filtration of liquids in food, pharmaceutical and industrial applications

PBP filters provide efficient filtration for medium duty and semi-critical applications. It has an extended service life thanks to its outstanding dirt holding capacity. Its filter media consist of thermally bonded fibers layered on a central high strength core with increasing fiber density towards the core. Thus, ensuring effective depth filtration, making it suitable for nearly all operation and service conditions. The bonded fibers assure no migration even under pulse conditions.



### Key features:

- High flow and low pressure drop
- Graded density for high dirt holding capacity
- Wide chemical compatibility
- Thermally bonded matrix minimizes fiber migration

### Applications:

- Filtration of chemicals, paint, resins, ink
- Pre-Filtration of potable, cleaning, process and product water (WFI)
- Reverse Osmosis membrane protection

### Quality first:

- Manufacturing acc. ISO 9001
- Comply with EU Regulation No. 1935/2004
- Materials used meet FDA title 21
- Batch traceability

## Protecting process, products and people

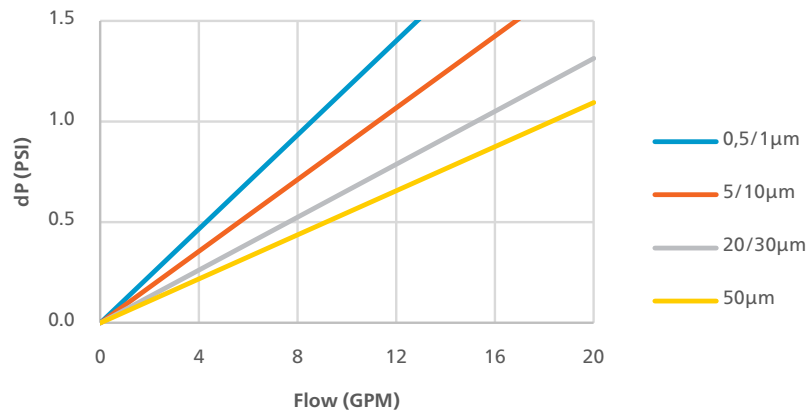
Atlas Copco's process filters optimize your productivity while protecting your process, product and consumers. Our portfolio of cartridges and housings covers all your filtration needs. The products are made from proven, high quality materials from reputable suppliers and manufactured in a controlled environment subjected to strict QA/QC procedures.



## Product specifications

Materials of construction	
Filter media	Polypropylene
Support	Polypropylene
Core/Cage	Polypropylene
End caps	Polypropylene (reinforced)
Dimensions	
Outside diameter	2.52"
Inside diameter	1.10"
Operating conditions	
Max. temperature	176°F
Max. differential pressure forward flow	58 PSI @ 68°F, 35 PSI @ 176°F
Recommended change out differential pressure	36 PSI

### Flow rate



**Note:** 10" cartridge tested with water @ 68°F, 1.005 cP (typical flow rate)

### Product configuration

Series	Rating	Length	End cap	Seal
PBP	0.5 µm	5"	C2 = 2x226 O-ring + 2 tabs/Flat	S = Silicone
	1 µm	9.75"	C3 = 2x222 O-ring/Flat	E = EPDM
	5 µm	10"	C7 = 2x226 O-ring + 2 tabs/Fin	V = Viton
	10 µm	20"	C8 = 2x222 O-ring/Fin	
	20/30/50 µm	30"	C28 = 2x222 O-ring + 3 tabs/Fin	
	75/100 µm	40"	DOE	

**Example:** PBP 100 µm 30" C3 V