



Supply patients of medical gases and protect staff

Zeus SP, East SP and Gem Shield
Medical Gas Terminal Units



Focus on safety

The Zeus and East SP economically designed terminal units are manufactured gas specific to prevent interchangeability between different types of gas services. The medical gas terminal units contain clear gas indexing pins to eliminate the risk of connecting a second fix from one service to the first fix of another service, either during installation or service. BeaconMedaes Zeus and East SP Medical Gas Terminal Units are fully compliant with BS 5682 standards.

An anti-swivel pin is incorporated in the Zeus and East SP socket assembly to prevent rotation of installed equipment. A positive action of the rolling pin latch mechanisms holds the probe securely.

- Clear gas indication
- Pressure and leak tested



Easy installation and maintenance

The Zeus and East SP Medical Gas Terminal Units are attached to the medical gas distribution pipeline system semi permanently via medical gas hose assembly.

Integral check valves allow removal of the housing and socket assemblies for maintenance without closing down the entire pipeline. The 2nd fix can be easily removed using the access holes in the front gas identification ring. This saves the need to strip down fascia panels to gain access, and enables quick and clean maintenance.

The SP range of 2nd fixes are designed to be used together with our conversion kits to upgrade terminal units. The upgrade option allows conversion of aged and outdated terminal units to the latest 2nd fix designs whilst maintaining the original 1st fix and avoiding interruption of gas service associated with full installation of replacements.

The 1st fix and check valve are common to both our Zeus and East SP terminal units. This means you can upgrade from the more economically priced Zeus SP plastic product to the more robust chrome plated metal East SP at a later date.

Design

The Zeus and East SP Medical Gas Terminal Units are enclosed in a white ABS decorative mounting box with an ABS fascia. Both contain a machined brass construction first fix with seal plate, check valve and a brazed copper stub pipe of 12 mm. They are gas and vacuum indexed and contain an anti-swivel pin in a wall-mounted setup.



Zeus SP	East SP
Injection moulded polymer	All metal construction
Plastic body	Black Teflon™ coated metal body
Plastic to metal seal on maintenance check valves	Full metal to metal seal on maintenance check valves
Stainless steel Teflon™ coated rolling pins	Zinc die-cast chrome collar with stainless steel rolling pins
Plastic interlock ring	Copper/zinc finished interlock ring



Maximum versatility



Plaster shield



Different mounting and application options



Bedhead mount installation kit



Flush surround



Conversion terminal units available



Terminal unit probes





Exceptional reliability

The BeaconMedæx Gem Shield Medical Gas Terminal Unit's exceptional reliability is a testament to its unique pedigree. As the next generation of medical gas terminal units - the GEM Shield provides antimicrobial protection for patient safety and improved maintenance. These unique terminal units offer:

- Easy to connect and disconnect gas probes
- Easy to clean flush outer ring with pad printed gas ID
- Exceptional pressure drop performance
- 100% leak testing provides peace of mind
- Low pressure drop performance for high flow supply
- More than 1.5 million terminal units supplied

Protection of staff and patients

The GEM Shield Terminal Units include an antimicrobial additive to assist with infection control. This additive actively reduces the growth of bacteria thus limiting the chance of cross infection. A safety taggant enables the user to verify the unit includes the antimicrobial additive, offering complete peace of mind.

Guaranteed durability and quality

Endurance and Strength Tests		
	Gem Shield	ISO 9170
State Loading	150 N ¹	20 N
Pull Test	1650 N ²	500 N
Cycle Test - Leakage	10,000 without any service	10,000 with service every 1,000
Pressure Drop Test 200l/min at 4 bar	0.164	<0.700

1. Terminal unit did not break. Test was stopped.
2. ISO 9710 requirements

BeaconMedæx Gem Shield ranges are fully compliant with DIN 13260-2 and BS 5682 standards.

In our Medical Gas Terminal Units, we use fire-retardant polypropylene, which is extremely durable and prevents discolourisation. The 10,000 cycle tests ran on our terminal units confirm their exceptional durability.

Attention to detail



Unique and innovative check valve

enables us to provide a 36 month warranty as standard



Easy to clean flush gas identification ring

eliminates the dust trap associated with other designs



Engineered break point

prevents pipework from rupturing during bed jacking



High precision gas indexing

ensures a strong, secure connection every time



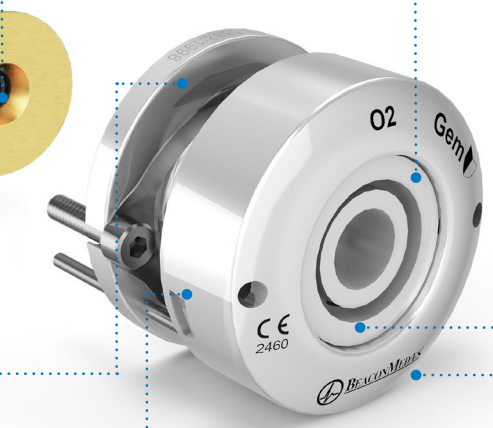
Clever design

provides easy access for improved maintenance

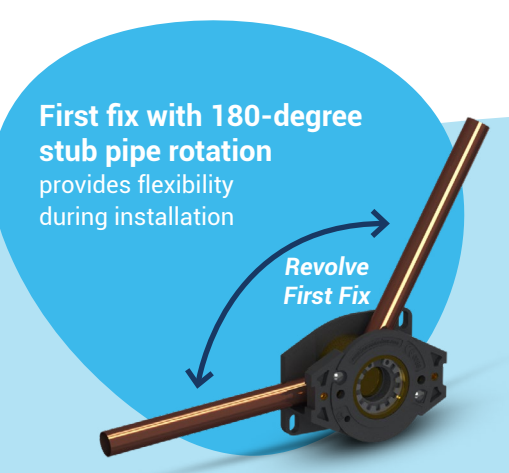


Service hole enables quick and easy maintenance

of the check valve assembly



Gem Shield
Second Fix



First fix with 180-degree stub pipe rotation provides flexibility during installation

Revolve First Fix



Modern look with an enhanced curved appearance

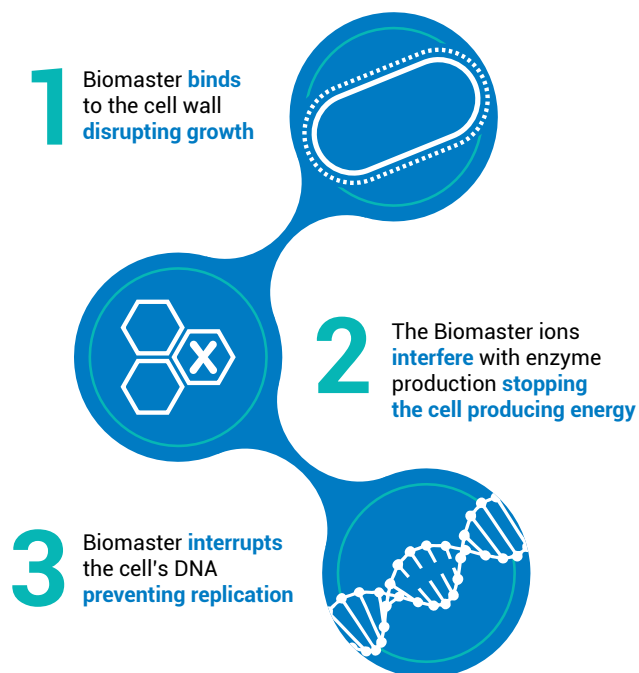


Accessories

- Stainless steel fascia plates for improved aesthetics
- Stainless steel probes for connecting downstream equipment
- A full range of equipment and accessories for connection to patients
- Fascia plates for wall mounted installations with antimicrobial protection
- Jig plates for quick and uniform installation

Multiple mounting options

- Modular/Wall
- Pendant Rear NIST
- Retractable Pendant
- Flexible Pendant



Biomaster antimicrobial additive

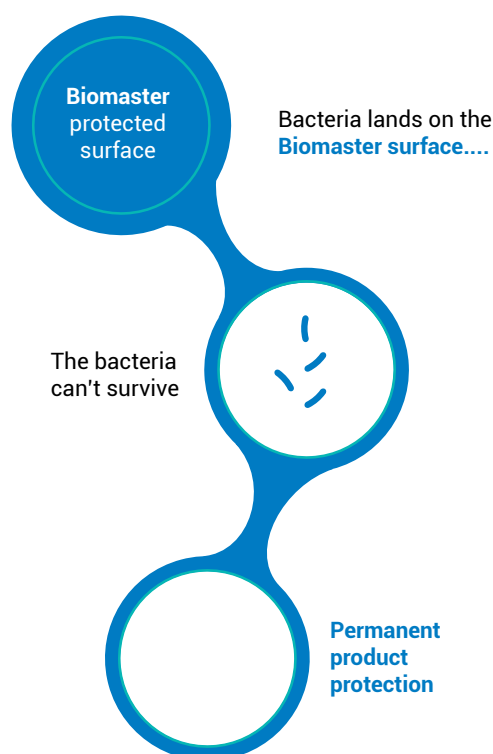
All user accessible parts of the GEM Shield Terminal Units incorporate an antimicrobial additive to minimise cross infection. Independent testing proves a reduction against E. coli and MRSA bacteria. Since the additive is included in the mixture of the plastic, the inherent properties last the lifetime of the product.

Biomaster antimicrobial additives use a silver ion based technology. This prevents the growth of harmful bacteria, lasts the lifetime of the product and is safe and nontoxic.

Verimaster safety taggant

All user accessible parts incorporate a safety taggant, which is mixed together with the antimicrobial additive. This is used to check we have truly added the mixture during manufacturing as part of our quality control procedures.

With the safety taggant check we can verify if it is a genuine BeaconMedæS product or not - for added security measures, and ultimate peace of mind.



Life is in the details.®