

# *Oil-less Rotary Vane Medical Vacuum Systems*



**BEACONMEDÆS®**

## Key Features

### *TotalAlert Embedded Control Panel*

The TotalAlert Embedded (TAE) control panel features an intrinsically safe 24V within the panel. Service personnel are at less risk while performing maintenance tasks within the panel. With the addition of the TAE control boards, there is even less wiring in the control panel.



### *Electrical Connections*

The control panel comes pre-drilled to make the electrical connections safe and quick to access. Connections for main power, alarm contacts, and Ethernet are all easily accessible.



### *Redundancy*

Nothing is more important from your system than non-interrupted vacuum service. We ensure there will not be service interruptions even in extreme circumstances with features such as a backup vacuum switch.



### *Serviceability*

The longevity and performance efficiency of your vacuum system depends on a proper maintenance program. From pumps placement to the maintenance activity section of the controls, serviceability remains a key design element of these vacuum systems.



## Simple to Maintain. No More Leaks or Oil Changes.

LifeLine® oil-less rotary vane pumps are 100% dry. There is absolutely no oil to leak or change. Each pump contains durable, self-lubricating, carbon/graphite vanes. Vane change-out is infrequent and amazingly simple when finally required. In addition, all systems are air cooled. Water is never required for cooling or sealing, further reducing operating costs.



## Quiet, Vibration-Free Operation

With noise levels at or below 79 dB(A) for all duplex models, the oil-less vacuum rotary vane systems are very quiet to operate. Additionally, oil-less rotary vane technology is inherently vibration-free.

## Compact Design

The vertical vacuum offers one of the smallest footprints of any fully NFPA compliant medical vacuum package. With its single point inlet, alarm and electrical connections, the vertical vacuum is convenient and economical to install.

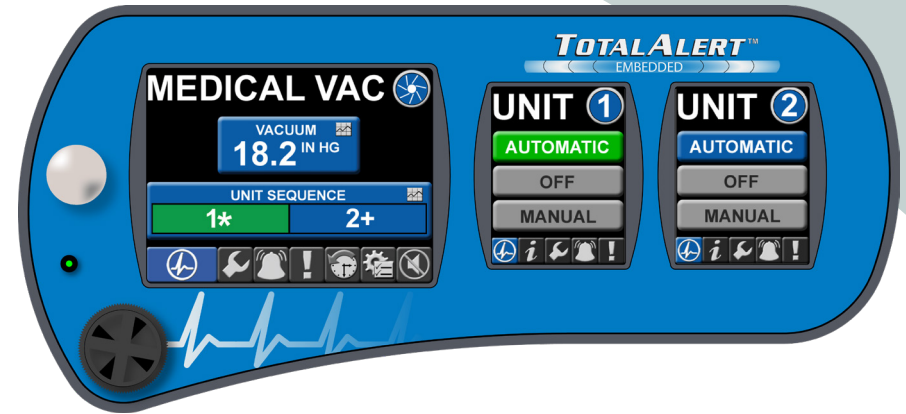
These Lifeline® packages, in vertical micro, mini and tank mount configurations, are designed to fit through a 36" opening without disassembly and require minimal site preparation. The Single Point Connection base mount packages can quickly be disassembled for transport through standard-sized doorways for installation.



## Touchscreen Functionality

The LifeLine® oil-less rotary vane vacuum systems feature high-detail touchscreen controls. All TAE systems incorporate a large “system” screen with additional “unit” screens for each pump/motor combination. Easy-to-read color graphics and icons display the system’s vital information.

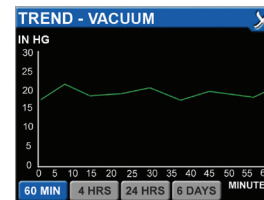
- Motion sensor activates touchscreens, preserving the screen life
- Self-diagnostic alerts to inform you of potential system problems before becoming alarm/shutdown conditions
- Maintenance alerts to keep your vacuum system services on schedule



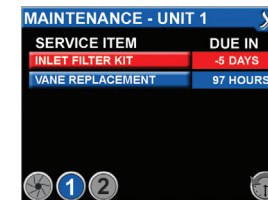
## TotalAlert Embedded

The TotalAlert Embedded (TAE) controls enable you to network your oil-less rotary vane system with your TotalAlert alarm panels through your facility's Ethernet. By simply connecting the control panel to an Ethernet hub, you can monitor the system remotely from any computer on the facility's network. No additional wiring, no additional software - all inclusive out of the gate.

- Text/e-mail alerts and alarms notify the right people immediately
- Ethernet communication compatible with TotalAlert alarm systems
- Download and save event logs for alarm and service history



*Trend screens for historical analysis of problems or potential problems.*



*Service screens with count-down timers and alerts for upcoming maintenance items*

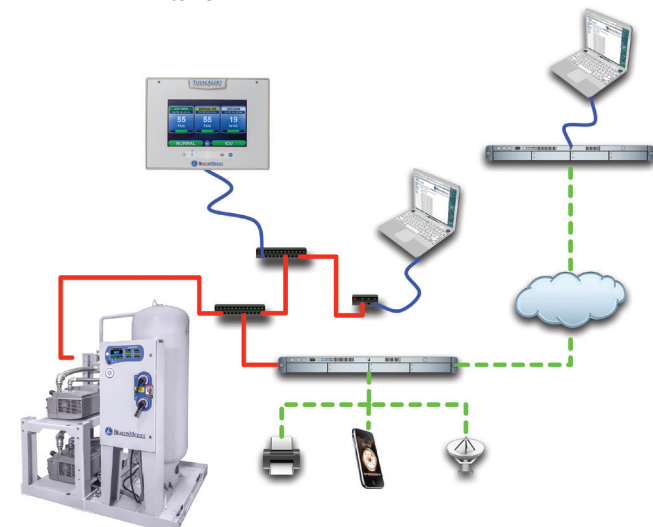


*Separate event logs for alarm and service history*

## TotalAlert Embedded Network

The TotalAlert Embedded (TAE) network puts all of the information from your source equipment and alarms at your fingertips. Each unit comes fully equipped with an embedded web server - all you have to do is plug it into the facility's Ethernet and pull up the unique web address on any web browser on the network.

All devices communicate with each other through the Ethernet. Access the event logs of each device, see the pertinent information and statistics, view trends right from your desktop or any computer in the facility.





# BEACONMEDÆS®

BeaconMedaes • Part of the Atlas Copco Group • 1059 Paragon Way, Rock Hill, SC 29730  
Tel: 888.4MEDGAS (463.3427) • www.beaconmedaes.com • © BeaconMedaes March 2018

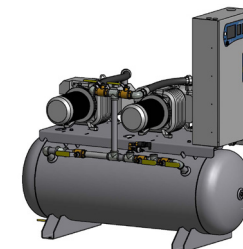
Technical Specifications			
Power		System Capacity <sup>1</sup>	
HP	KW	SCFM @ 19" HG	LPS @ 450 mmHg
Simplex Vertical			
1.5	0.9	5.3	2.5
2	1.5	8	3.8
Duplex Vertical			
1.5	0.9	5.3	2.5
2	1.5	8	3.8
3	2.2	13.5	6.4
5	3.6	20	9.4
Duplex Horizontal Tank Mount			
1.5	0.9	5.3	2.5
2	1.5	8	3.8
3	2.2	13.5	6.4
5	3.6	20	9.4
Duplex Single Point Connection			
7.5	5.6	29	13.7
10	7.5	56	26.4
Triplex Single Point Connection			
7.5	5.6	59	27.8
10	7.5	112	52.8
Quadruplex Single Point Connection			
7.5	5.6	88	41.5
10	7.5	168	79.2

1. All capacities (except Simplex) are shown as NFPA system capacities (reserve vacuum pump on standby). All capacities are measured at 19" Hg.  
2. Normal operating conditions at a maximum ambient of 105° F. Consult factory for higher ambient conditions.

## Multiple configurations

We offer our oil-less rotary vane vacuum systems in various configurations to match your specific space and capacity requirements.

- For applications where space is a factor, select from vertical micro, vertical mini or tank mount configurations
- Single Point Connection base mount systems available in 7.5 HP through 10 HP

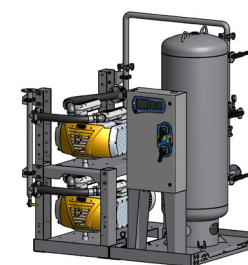


Tank Mount

## System Start Up

Your new oil-less rotary vane vacuum plant includes the official start up by a BeaconMedaes service technician or authorized service provider. With critical functions relying on your medical vacuum system, it's essential to have proper installation and functionality from start up.

- Proper system operation is assured
- Time and money savings if problems occur at start up
- Elimination of potential warranty issues in the future



Single Point Connection

## Preventive Maintenance

The efficient operation and service friendly design of our oil-less rotary vane vacuum plant keeps maintenance interventions to a minimum. Quick service access combined with extended service intervals reduces maintenance downtime and increases vacuum availability.

- Low level of consumable parts
- Direct access to all service points
- Service warning function available via the TotalAlert Embedded controller
- BeaconMedaes Planned Maintenance Program available



Vertical Micro

*Life*  
is in the  
details.®