

Materials of Construction (Wetted)

Ball

Type 316 Stainless Steel

Seats

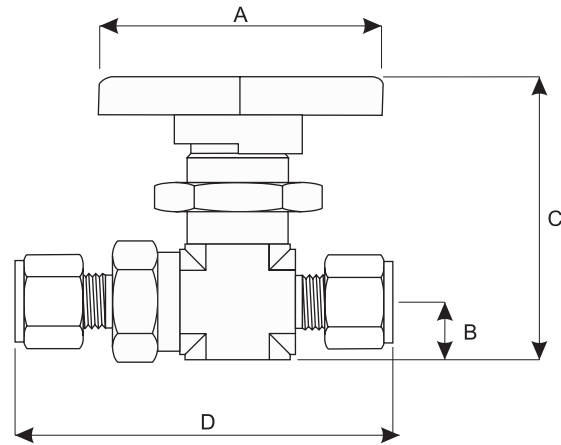
PTFE

Body

Type 316 Stainless Steel or Brass

Stem O-Ring, Connector O-Ring, Back-Up O-Ring



Viton



Dimensions

| Valve Size | A | B | C | D |
|------------------|-----------------|-----------------|-----------------|-----------------|
| 1/4" Compression | 2.12" (53.8 mm) | 0.44" (11.2 mm) | 2.15" (54.6 mm) | 2.77" (70.3 mm) |
| 3/8" Compression | 2.12" (53.8 mm) | 0.44" (11.2 mm) | 2.15" (54.6 mm) | 2.88" (73.1 mm) |
| 1/2" Compression | 3.02" (76.7 mm) | 0.75" (19.1 mm) | 2.96" (75.2 mm) | 3.77" (95.8 mm) |
| 3/4" Compression | 3.02" (76.7 mm) | 0.75" (19.1 mm) | 2.96" (75.2 mm) | 3.77" (95.8 mm) |

Technical Specifications

| End Connections Size | Flow Coefficient | Installation Service Usage | Max. Working Pressure | Leak Rate | Working Temperature Range |
|----------------------|------------------|----------------------------|---|---------------------------|--|
| Inlet/Outlet | Cv | Cleaning |  | Nitrogen Test |  °F |
| 1/4" Compression | 1/4" = 2.40 | 99.999% (5.0) High Purity | 3000 PSIG | Bubble Tight at 1000 PSIG | -40 to 350 °F |
| 3/8" Compression | 3/8" = 6.00 | | | | |
| 1/2" Compression | 1/2" = 12.0 | | | | |
| 3/4" Compression | 3/4" = 12.0 | | | | |

Ordering Information

 HBV3000 - - -

| Gas | Inscribe |
|----------------------------|----------|
| Air - compressed | CGA 346 |
| Argon | CGA 580 |
| Argon mix | CGA 580 |
| Carbon dioxide | CGA 320 |
| Helium | CGA 580 |
| Hydrogen | CGA 350 |
| Argon/methane | CGA 350 |
| Nitrogen | CGA 580 |
| Air - industrial | CGA 590 |
| Nitrous Oxide | CGA 326 |
| Oxygen | CGA 540 |
| Other Gas: Provide CGA no. | |

| Body | Inscribe |
|-----------------|----------|
| Brass | B |
| Stainless Steel | SS |

| End Fittings | Inscribe |
|------------------|----------|
| 1/4" Compression | 4 |
| 3/8" Compression | 6 |
| 1/2" Compression | 8 |
| 3/4" Compression | 12 |