

Liquid Ring “Camel” Medical Vacuum Base Mount Modular System Duplex System (10 - 15 HP)

SPECIFICATION

Vacuum System

The duplex medical vacuum system is fully compliant with the latest edition of NFPA 99. The system consists of two steel framed simplex modules with an oil-free liquid ring vacuum pump coupled to a standard NEMA frame motor and a reservoir tank mounted on each module. A duplex system control panel is mounted on one of the modules. A standalone corrosion resistant receiver sized for appropriate demand is provided for the system. The system is completely tested prior to shipment. The installer, during installation, provides wiring and intake manifold piping between the modules.

Vacuum Pump

The pump is a Nash Vectra GL series oil-free, single-stage, positive displacement, cone-ported and non-pulsating liquid ring type. Materials of construction are all iron with steel shaft, ductile iron lobe, head, rotor and end plate. The shaft seals are standard internal mechanical seals, John Crane type 21.

Vacuum Pump Drive

The pump is direct driven. Torque is transmitted from the motor to the pump through a shaft coupling.

Vacuum Pump Motor

The motor is a continuous duty, NEMA rated, open drip proof, with 1.15 service factor suitable for 208V or 230/460V, 60 hertz, 3 phase electrical service.

The 10 hp motor runs at 1800 RPM.

The 15 hp motor runs at 1200 RPM.

Intake Piping

Each vacuum pump has a factory piped intake with an intake check valve to prevent backflow through off-cycle units, a vacuum relief valve and an isolation valve. The installer, at installation, provides an intake manifold.

Re-circulation and Seal Water

The system includes a dielectric union, anti-siphon valve, strainer, solenoid valve, flow control valve and an orifice union. Under normal operation, the system does not use more than 1 gpm seal water. The system includes a reservoir sufficient for up to 48 hours of operation without a fresh water supply. The reservoir serves as a separator/silencer. The system is self contained and air-cooled.

Vacuum Receiver

The vacuum receiver is corrosion resistant, ASME Code stamped, and rated for a minimum 125 PSIG design pressure. Included but shipped separately are a sight glass with manual drain and a vacuum gauge. All receiver piping and bypass valving are by contractor.

Control System

The duplex control system is NEMA 12 and U.L. labeled. The control system provides circuit breaker disconnects with external operators for each vacuum pump motor, full voltage motor starters with overload protection, 120V control circuit transformer for each motor circuit, visual and audible reserve unit alarm with isolated contacts for remote alarm, hand-off-auto lighted selector switches and runtime hourmeters. A programmable logic controller (PLC) controls the automatic alternation of both vacuum pumps and automatic activation of reserve unit if required. The control system includes a manually adjustable minimum run timer to minimize starts and stops on the system. A vacuum gauge is provided in the control panel.

Accessories (shipped loose)

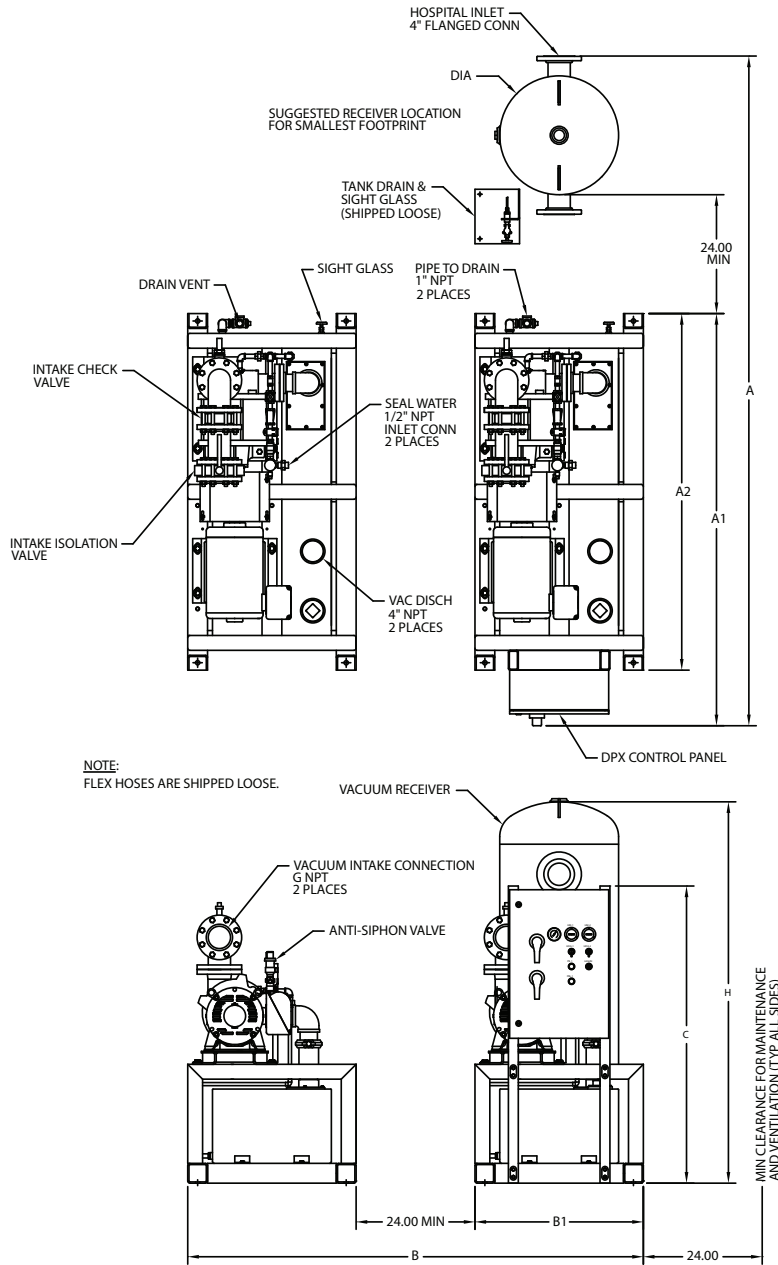
Intake flexible hose	2
Discharge flexible hose	2
Seal water flexible hose	2
Vibration isolator	8

Vacuum System Specifications¹

System Model No.	HP	Capacity ² @19" Hg	Receiver ³ (Gallons)	Noise ⁴ Level	System FLA @ 60 hz			Module Weight (lbs.)	
					208V	230V	460V	Vacuum ⁵	Receiver
LVS-10D-RC120V	10	55 scfm	120*	63	63	55	28	2472	350
LVS-10D-RC220V	10	55 scfm	220	63	63	55	28	2472	565
LVS-15D-RC120V	15	91 scfm	120*	75	100	87	44	3190	350
LVS-15D-RC220V	15	91 scfm	220	75	100	87	44	3190	565

- Notes:**
1. Normal operating condition at a maximum ambient of 105°F. Consult factory for higher ambient conditions.
 2. All capacities are shown as NFPA system capacities (reserve vacuum pump on standby).
 3. * Indicates standard receiver
 4. All noise levels are shown in dB(A) and reflect one vacuum pump in operation.
 5. Total weight for a 10 hp simplex module w/control panel (1348#) and a 10 hp simplex module (1124#).

Standard Configuration



COMPLETE SYSTEM MODEL NUMBER	UNIT (HP)	PUMP MODEL	RECEIVER (GALLONS)	DIMENSIONS (IN)								SQ FEET REQUIRED	
				A*	A1	A2	B*	B1	C	G	H		DIA
LVS-10D-RC120V	10	GL-35	120	136	84	72	92	34	60	3	77	24	61
LVS-10D-RC220V			220	142							85	30	63
LVS-15D-RC120V	15	GL-60	120	136	84	72	92	34	60	4	77	24	61
LVS-15D-RC220V			220	142							85	30	63

15HP/120GAL SHOWN (DIA24-210-SSB)

* SUGGESTED SYSTEM DIMENSIONS