

## Patient Service Console and Security Cover

### SPECIFICATION

#### **Recessed Patient Service Console (PSC)**

**Model Number: PSCx-xxxxxxx**

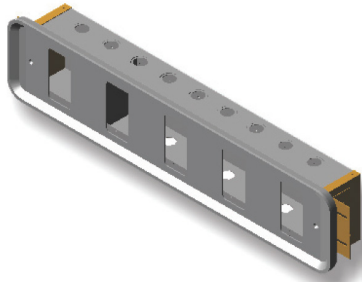
**Configurations: 1-8 Gas Configurations Available**

##### *Recessed Backbox*

- Fabricated 16-gauge satin-coat steel backbox complete with pre-punched top, bottom, and rear 1/2" x 3/4" conduit knockouts, ground screw ports, and barrier mounts spaced 60mm on center.
- Electrical service barriers of 16-gauge steel provided to separate electrical devices of different voltage or supply, and to separate medical gases from electrical compartments.
- Backbox to include adjustable universal side mounting brackets suitable for fastening to steel studs or other surfaces at rough-in.

##### *Finish Fascia*

- 6063-T5 extruded aluminum alloy complete with clear satin anodized finish.
- Finish trim to include matching decorative rounded endplates.



Recessed Patient Service Console (PSC)		
Model Number	Description	Services
PSC1-X	Console with 1 service	Medical Gas Outlets - O - Oxygen - A - Medical Air - V - Medical Vacuum - S - Vacuum Slide
PSC2-XX	Console with 2 services	
PSC3-XXX	Console with 3 services	
PSC4-XXXX	Console with 4 services	
PSC5-XXXXX	Console with 5 services	Electrical Services - E - Electrical
PSC6-XXXXXX	Console with 6 services	
PSC7-XXXXXXX	Console with 7 services	
PSC8-XXXXXXX	Console with 8 services	

*Example: For a console with the following services, Oxygen, Medical Air, Medical Vacuum, Vacuum Slide, and (2) electrical services, the model number would be: PSC6-OAVSEE*

*Example: For a console with the following services, (2) electrical services, Oxygen, and Medical Air, the model number would be: PSC4-EEOA*

#### **Security Door (Anti-Ligature) (SCC)**

Assembly constructed of stainless steel and mounts to the wall with standard screws. The door assembly is manufactured from stainless steel and attached to the frame with a stainless steel hinge.

- Access to the console by opening the stainless steel door by means of a lock and key.
- Perimeter of the frame is shaped to avoid ligature points.
- Cover includes a continuous hinge, no exposed fasteners when closed, and multiple locks for enhanced security and tamper resistance.
- Compact and easy to install, with flexible mounting.



Security Console Cover (SCC)		
Part Number	Model Number	Description
4107302681	SCC-1GAS	Security Cover - 1 Gas/Service
4107302682	SCC-2GAS	Security Cover - 2 Gases/Services
4107302683	SCC-3GAS	Security Cover - 3 Gases/Services
4107302684	SCC-4GAS	Security Cover - 4 Gases/Services
4107302685	SCC-5GAS	Security Cover - 5 Gases/Services
4107302686	SCC-6GAS	Security Cover - 6 Gases/Services
4107302687	SCC-7GAS	Security Cover - 7 Gases/Services
4107302688	SCC-8GAS	Security Cover - 8 Gases/Services

#### **Recessed Patient Service Console with Security Cover**

Recessed Patient Service Console (PSC) with Security Cover (SCC)	
Model Number	Description
SCC-PSC1-X	Console with 1 service, Security Cover
SCC-PSC2-XX	Console with 2 services, Security Cover
SCC-PSC3-XXX	Console with 3 services, Security Cover
SCC-PSC4-XXXX	Console with 4 services, Security Cover
SCC-PSC5-XXXXX	Console with 5 services, Security Cover
SCC-PSC6-XXXXXX	Console with 6 services, Security Cover
SCC-PSC7-XXXXXXX	Console with 7 services, Security Cover
SCC-PSC8-XXXXXXX	Console with 8 services, Security Cover

*Example: For a console with security cover and the following services, Oxygen, Medical Air, Medical Vacuum, Vacuum Slide, and (2) electrical services, the model number would be: SCC-PSC6-OAVSEE*

**Recessed Patient Service Console / Security Cover (optional)**

Patient Service Consoles are manufactured to customer specifications. The drawing indicates the possible locations of services. Select the services desired and fill in the appropriate location, letter in the charts below. Multiple locations for a particular service may be selected.

Number of Consoles \_\_\_\_\_ Number of Services (1-8) \_\_\_\_\_ Model Number \_\_\_\_\_

Project Name \_\_\_\_\_

Approved by \_\_\_\_\_ Date \_\_\_\_\_

**NOTES:** BeaconMedaes requires a signed, approved copy of this specification before fabrication will begin.



PSC1-X or SCC-PSC1-X



PSC2-XX or SCC-PSC2-XX



PSC3-XXX or SCC-PSC3-XXX



PSC4-XXXX or SCC-PSC4-XXXX



PSC5-XXXXX or SCC-PSC5-XXXXX



PSC6-XXXXXX or SCC-PSC6-XXXXXX



PSC7-XXXXXXX or SCC-PSC7-XXXXXXX



PSC8-XXXXXXX or SCC-PSC8-XXXXXXX

Gas Service	Outlet Type				Service Location(s) Indicate location(s) with number	Quantity
	Quick Connect			DISS		
	Geometric Index	Pin Index	Latch Key			
Oxygen (O)						
Nitrous Oxide (X)						
Medical Air (A)						
Vacuum (V)						
WAGD (W)						
Nitrogen (N)	NOT AVAILABLE					
Instrument Air (I)						
Carbon Dioxide (C)						
Vacuum Slide Bracket (S)*						
<b>Electrical Services</b>						
Duplex Power Receptacle 125V, 20 AMP (E) (Circle One Color)				Red		
				Ivory		
				Gray		
Duplex Power Receptacle 125V, 15 AMP (E) (Circle One Color)				Red		
				Ivory		
				Gray		
Future Electrical Provision (E)						
<b>TOTAL SELECTED SERVICES (GAS + ACCESSORY)</b>						

\*Vacuum Slide Bracket mounted on fold-down panel of Security Cover if ordering model with Security Cover.